

## QUICK CARD

### Ethernet Y.1564 Layer 2 Traffic


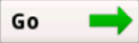
This quick card describes how to set up the **OneAdvisor 800 400G Module** or **OneAdvisor 1000 400G Module** to run an **ITU Y.1564 Layer 2 Traffic Test** for Metro Ethernet service activation.

- OneAdvisor 800 or OneAdvisor 1000 equipped with the following:
  - 400G Transport Module
  - Transport software release V4.0.0 or greater
  - Software option for data rate to be tested:
    - ✓ CA10M1GE test option for 10/100/1000M Copper or 1 Gigabit Optical Ethernet
    - ✓ CA10GELAN test option for 10 Gigabit Ethernet
    - ✓ CA25GE test option for 25 Gigabit Ethernet
    - ✓ CA40GE test option for 40 Gigabit Ethernet
    - ✓ CA50GE test option for 50 Gigabit Ethernet
    - ✓ CA100GE test option for 100 Gigabit Ethernet
    - ✓ CA200GE test option for 200 Gigabit Ethernet
    - ✓ CA400GE test option for 400 Gigabit Ethernet
- Optical Transceiver supporting the Ethernet data rate to be tested (SFP, QSFP, or OSFP)
- Cables to match the optical transceiver and the line under test
- Fiber optic inspection microscope (P5000i or FiberChek Probe)
- Fiber optic cleaning supplies



Figure 1: Equipment Requirements

## LAUNCH TEST

1. Press the Power button to turn on the OneAdvisor.
2. Press the 400G Module icon  at the top of the screen.
3. Using the **Select Test** menu, Quick Launch menu, or Job Manager, launch the Ethernet Layer 2 Traffic test for the desired data rate on the desired port (P1 or P2). For example:
  - Ethernet ▶ 400GigE Optical**
  - ▶ Y.1564 SAMComplete ▶ Layer 2 Traffic**
  - ▶ P2 Terminate.**
4. Tap the  button next to “**Start a New Configuration (reset to defaults)**”

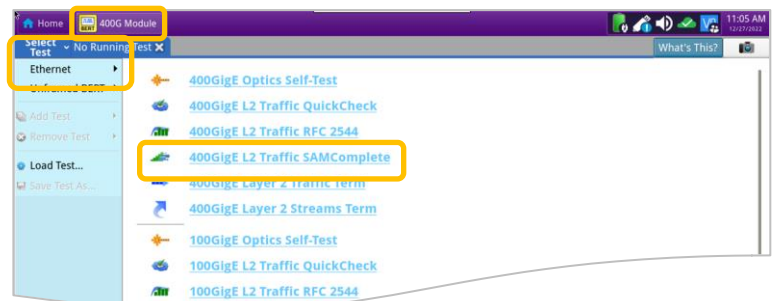


Figure 2: Launch Test

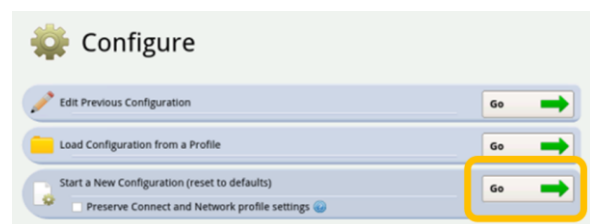


Figure 3: Start a New Configuration

## QUICK CARD

### CONFIGURE TEST

- ▶ The following Information is needed to configure the test:
  - Frame Size
  - VLAN ID, if VLAN tagging is used.
  - Committed Information Rate (CIR)
  - Pass/Fail Threshold for Frame Loss Ratio, Delay, and Delay Variation (Jitter)

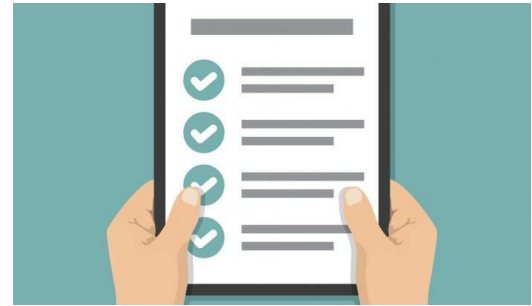



Figure 4: Work Order

1. Tap the  button to display the **Local Network Settings 1** screen.

- ▶ Select the **Frame Size** you wish to generate.

2. Tap  to display the **Local Network Settings 2** screen.

- ▶ If you are testing a VLAN, set **Encapsulation** to **VLAN** and enter the **VLAN ID**.

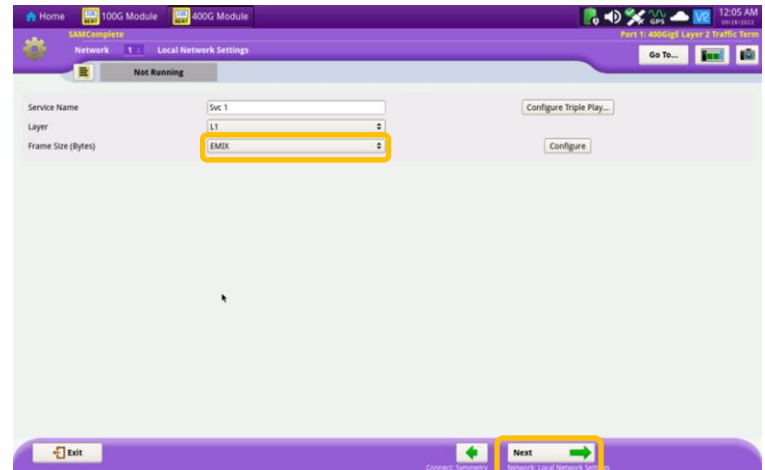


Figure 5: Local Network Settings 1

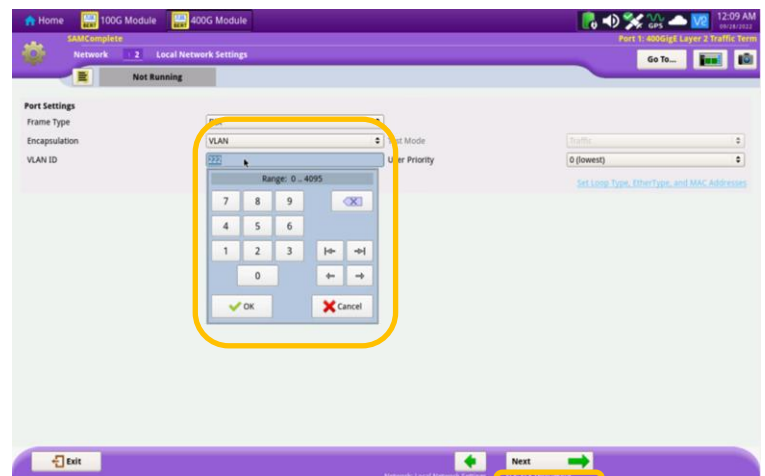



Figure 6: Local Network Settings 2

## QUICK CARD

4. Tap **Next**  to display the **SLA Throughput** screen.

- ▶ Enter the Committed Information Rate (CIR).
- ▶ If you are testing at full line rate or if traffic is not being policed, uncheck the **Policing** checkbox.

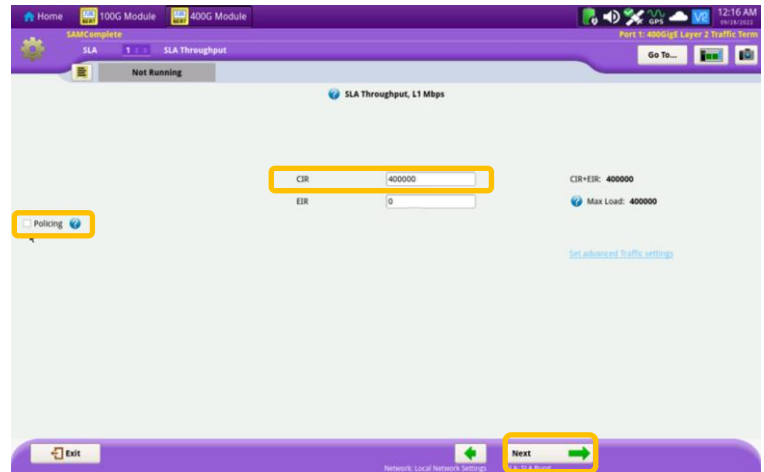



Figure 7: SLA Throughput

5. Tap the **Next**  button twice to display the **SLA Performance** screen.

- ▶ Enter the Frame Loss Ratio, Frame Delay, and Delay Variation pass/fail criteria.

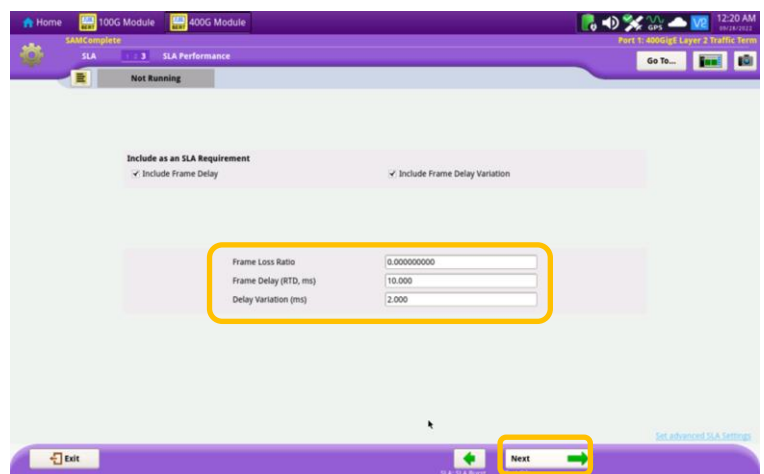



Figure 8: SLA Performance

6. Tap the **Next**  button 5 times to display the **J-QuickCheck** screen.

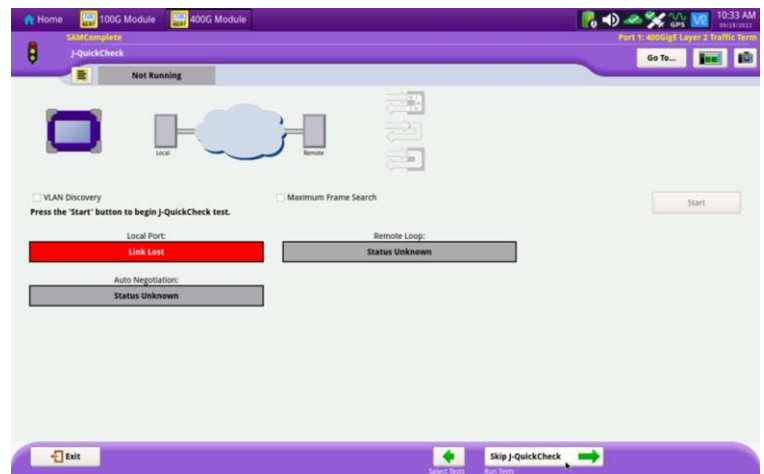


Figure 9: J-QuickCheck

## QUICK CARD

### CONNECT TO LINE UNDER TEST AND LOOP BACK DEVICE

#### ► For Optical Interfaces:

1. Use the VIAVI P5000i or FiberChek Probe microscope to inspect both sides of every connection being used (SFP, attenuators, patch cables, bulkheads)
  - Focus the fiber on the screen.
  - If it appears dirty, clean the fiber end-face and re-inspect.
  - If it appears clean, run the inspection test.
  - If it fails, clean the fiber and re-run inspection test. Repeat until it passes.
2. Insert desired Optical Transceiver into the Port 1 SFP or QSFP slot on the top of the OneAdvisor.
3. If necessary, insert optical attenuators into the SFP/QSFP TX and/or RX ports.
4. Connect the SFP/QSFP to the port under test using a jumper cable compatible with the line under test.

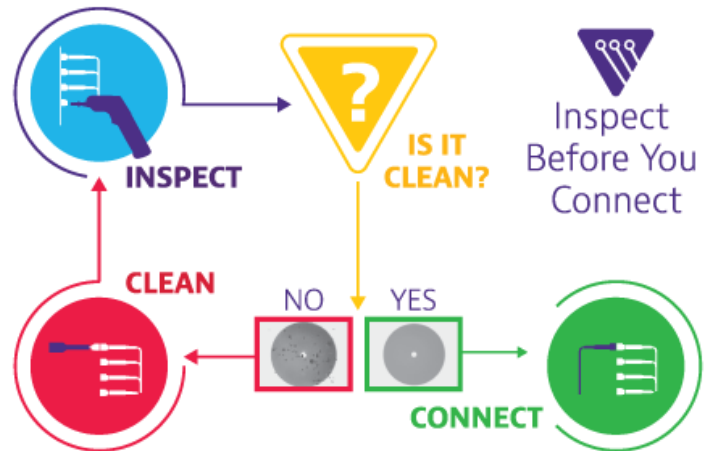


Figure 10: Inspect Before You Connect

#### ► For Copper 10/100/1000BASE-T interfaces:

1. Insert Copper SFP into the Port 1 SFP or slot on the top of the OneAdvisor.
2. Connect the copper SFP to the port under test using CAT 5E or better cable.

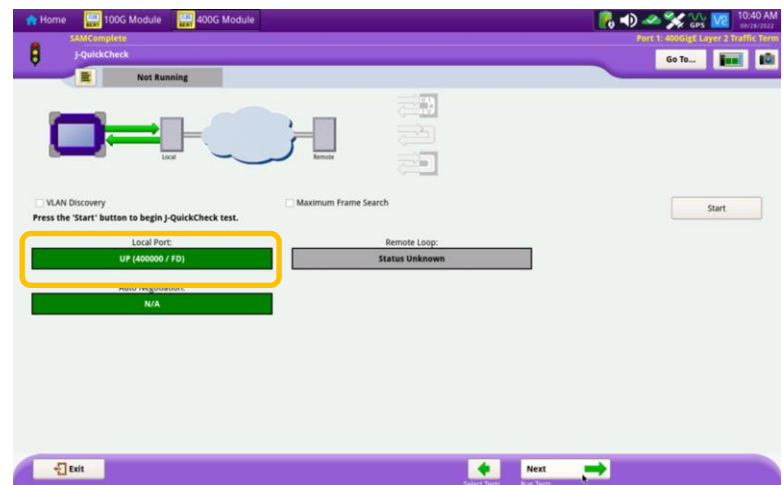


Figure 11: Local Port status

#### ► Verify that **Local Port** status **UP** and Full Duplex (**FD**)

► Tap the button.

► Verify that the **Remote Loop** is recognized.

► Tap the button to display the **Run Y.1564** Tests screen.

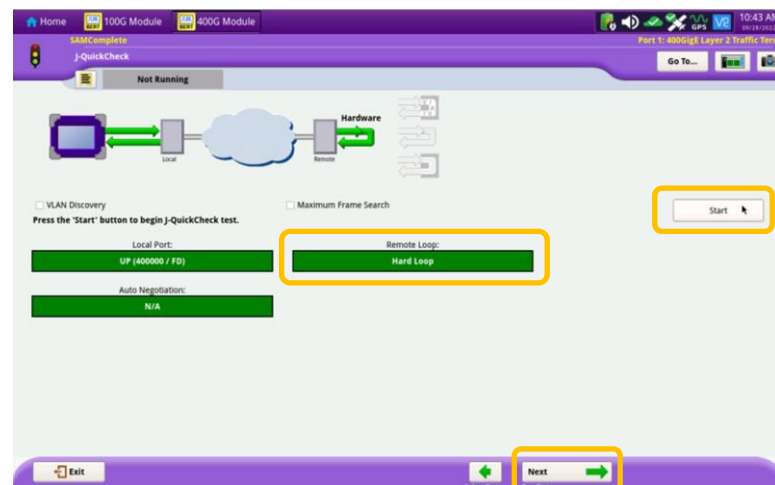



Figure 12: Run J-QuickCheck

## QUICK CARD

### RUN TEST

1. Tap the  button.
2. Wait for the test to complete and verify that all tests pass or complete as indicated by a green or blue checkmark.

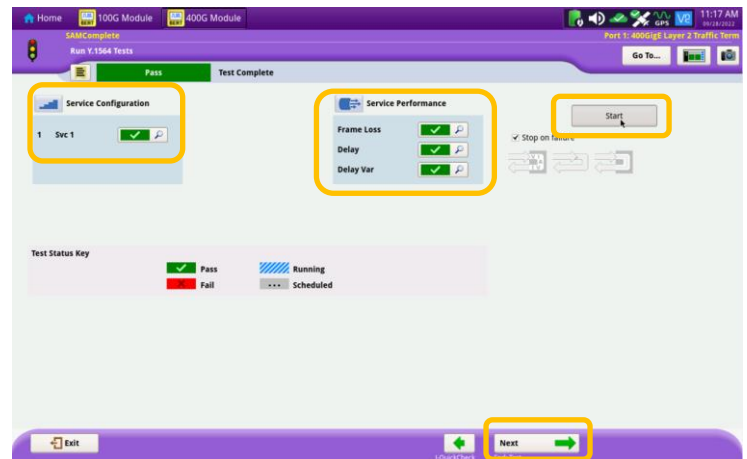



Figure 13: Run Y.1564 Tests

### CREATE REPORT

1. Tap the  button three times to display the **Report** screen.

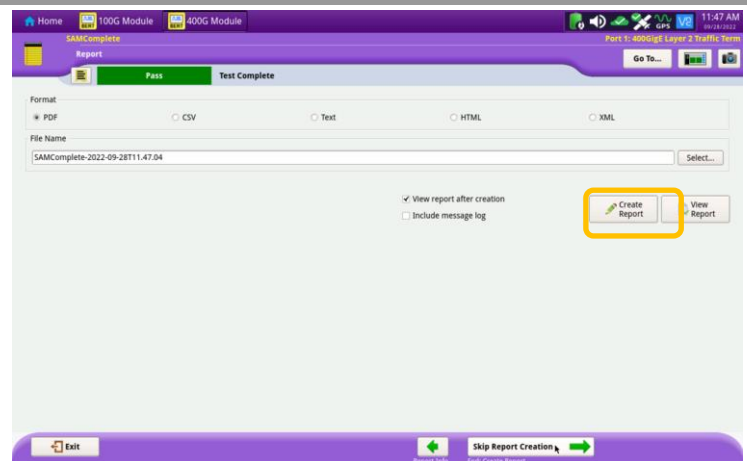



Figure 14: Create Report

2. Tap  .

3. Tap  buttons three times to close the report and exit the Y.1564 test.

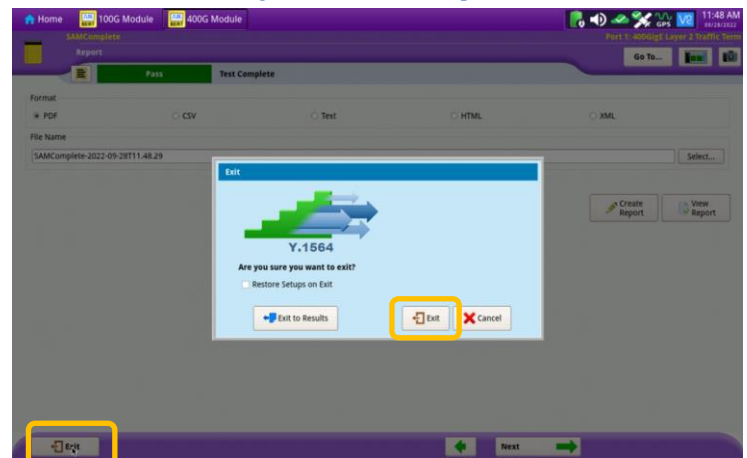


Figure 15: Exit