

J-Reporter

User's Guide

J-Reporter

User's Guide



Network and Service Enablement
One Milestone Center Court
Germantown, Maryland 20876-7100 USA
Toll Free 1-855-ASK-JDSU • Tel +1-301-353-1560 • Fax +1-240-404-1996
www.jdsu.com

Notice

Every effort was made to ensure that the information in this manual was accurate at the time of printing. However, information is subject to change without notice, and JDS Uniphase reserves the right to provide an addendum to this manual with information not available at the time that this manual was created.

Copyright

© Copyright 2014 JDS Uniphase Corporation. All rights reserved. JDSU and the JDSU logo are trademarks of JDS Uniphase Corporation (“JDS Uniphase”). All other trademarks and registered trademarks are the property of their respective owners. No part of this guide may be reproduced or transmitted electronically or otherwise without written permission of the publisher.

Copyright release

Reproduction and distribution of this guide is authorized for Government purposes only.

Trademarks

JDSU, the JDSU logo, J-Reporter, and Certifier40G are trademarks or registered trademarks of JDSU in the United States and/or other countries.

Microsoft, Windows, Windows Mobile and Windows Mobile Device Center are either registered trademarks or trademarks of Microsoft Corporation in the United States and/or other countries.

Specifications, terms, and conditions are subject to change without notice. All trademarks and registered trademarks are the property of their respective companies.

Terms and conditions

Specifications, terms, and conditions are subject to change without notice. The provision of hardware, services, and/or software are subject to JDSU's standard terms and conditions, available at www.jdsu.com/terms.



Contents

About This Guide	v
Purpose and Scope	vi
Assumptions	vi
Related Information	vi
Conventions	vii
Technical Assistance	viii

Chapter 1	Introduction	1
	About J-Reporter	2
	Running the Program	2

Chapter 2	Project Management	3
	Creating a New Project	4
	Opening an Existing Project	5
	Importing the Test Results from a Device	6
	Importing the Test Results from a USB Flash Drive	8
	Exporting the Test Results	9
	Viewing the Device on your Workstation	10

Chapter 3	Data Management	11
	Viewing the Test Results	12
	Viewing the Test Results – Inverting Y Axis	16
	Viewing the Test Results – Linear & Logarithmic	17
	Viewing the Test Results – Markers	18
	Editing Information	19
	Searching for Information	22

Chapter 4	Setting Preferences	23
	Personalizing the Test Results	24
	Choosing the Length Units	25
	Choosing the Report Format	26
	Selecting the Language	27

Chapter 5	Updating Device Software	29
	Updating the Device Software	30

Index		33
--------------	--	-----------



About This Guide

The topics discussed in this section are as follows:

- [“Purpose and Scope” on page vi](#)
- [“Assumptions” on page vi](#)
- [“Related Information” on page vi](#)
- [“Conventions” on page vii](#)
- [“Technical Assistance” on page viii](#)

Purpose and Scope

The purpose of this guide is to help you successfully use the J-Reporter features and capabilities. This guide includes task-based instructions that describe how to install, configure, use, and troubleshoot the J-Reporter. Additionally, this guide provides a complete description of JDSU's warranty, services, and repair information, including terms and conditions of the licensing agreement.

Assumptions

This guide is intended for novice, intermediate, and experienced users who want to use the J-Reporter effectively and efficiently. We are assuming that you have basic computer and mouse/track ball experience and are familiar with basic telecommunication concepts and terminology.

Related Information

Use this guide in conjunction with the following information:

J-Reporter Installation Guide — This guide provides instructions on the system requirements for J-Reporter and how to install the J-Reporter software on your computer.

Conventions

This guide uses typographical and symbols conventions as described in the following tables.

Table 1 Text formatting and other typographical conventions

Item(s)	Example(s)
Buttons, keys, or switches that you press or flip on a physical device.	Press the On button. Press the Enter key. – Flip the Power switch to the on position.
Buttons, links, menus, menu options, tabs, or fields on a PC-based or Web-based user interface that you click, select, or type information into.	Click Start . – Click File > Properties . – Click the Properties tab. – Type the name of the probe in the Probe Name field.
Directory names, file names, and code and output messages that appear in a command line interface or in some graphical user interfaces (GUIs).	<code>\$NANGT_DATA_DIR/results</code> (directory) – <code>test_products/users/defaultUser.xml</code> (file name) – <code>All results okay.</code> (output message)
Text you must type exactly as shown into a command line interface, text file, or a GUI text field.	– Restart the applications on the server using the following command: <code>\$BASEDIR/startup/npiu_init restart</code> Type: <code>a:\set.exe</code> in the dialog box.
References to guides, books, and other publications appear in <i>this typeface</i> .	Refer to <i>Newton's Telecom Dictionary</i> .
Command line option separators.	<code>platform [a b e]</code>
Optional arguments (text variables in code).	<code>login [platform name]</code>
Required arguments (text variables in code).	<code><password></code>

Table 2 Symbol conventions



This symbol represents a general hazard. It may be associated with either a DANGER, WARNING, or CAUTION message. See [Table 3](#) for more information.



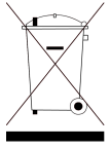
This symbol represents hazardous voltages. It may be associated with either a DANGER, WARNING, or CAUTION message. See [Table 3](#) for more information.



This symbol represents a risk of explosion. It may be associated with either a DANGER, WARNING, or CAUTION message. See [Table 3](#) for more information.



This symbol indicates a note that includes important supplemental information or tips related to the main text.



This symbol, located on the equipment, battery, or the packaging indicates that the equipment or battery must not be disposed of in a land-fill site or as municipal waste, and should be disposed of according to your national regulations.

Table 3 Safety definitions

CAUTION Indicates a situation that, if not avoided, could result in loss of data or a disruption of software operation.

Technical Assistance

Table 4 lists contact information for technical assistance. For the latest TAC information, go to www.jdsu.com or contact your local sales office for assistance. Contact information for regional sales headquarters is listed on the back cover of this manual.

Table 4 Technical assistance centers

Region	Phone Number	
Americas	1-855-ASK-JDSU (option #3) 1 301 353 1560	(1-855-275-5378, option #3) tac@jdsu.com
Europe, Africa, and Mid-East	+49 (0) 7121 86 1345 (JDSU Germany)	hotline.europe@jdsu.com
Asia and the Pacific	+852 2892 0990 (Hong Kong) +86 10 6655 5988 (Beijing-China)	

During off-hours, you can request assistance by doing one of the following: leave a voice mail message at the Technical Assistance number, e-mail the North American Technical Assistance Center, tac@jdsu.com, or submit your question using our online Technical Assistance Request form at www.jdsu.com.

Introduction

This chapter describes the system requirements and how to start J-Reporter. The topics discussed in this chapter are as follows:

- [“About J-Reporter” on page 2](#)
- [“Running the Program” on page 2](#)



Please ensure JDSU J-Reporter has been installed into you workstation before you proceed further. Please refer to Installation Guide for detailed instructions on how to obtain and install J-Reporter.

About J-Reporter

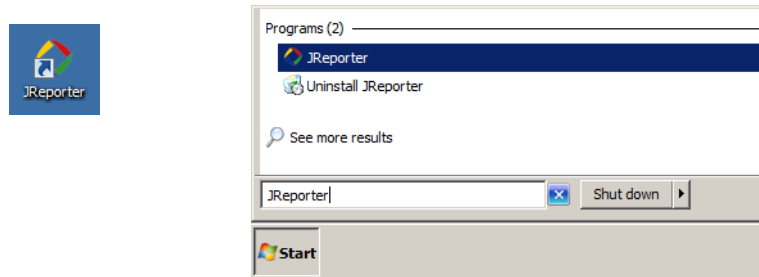
J-Reporter is a software program that works seamlessly with JDSU's Certifier40G. This software has undergone numerous qualitative and functional tests to ensure the latest version meets the latest industrial standards and trend requirements.

This guide contains information about and instructions on how to use the J-Reporter software.

System requirements are listed in the *J-Reporter Installation Guide*.

Running the Program

- 1 Double click on the J-Reporter shortcut icon on your desktop to start the program. You may also click the Windows Start button and enter `JReporter` into the search box.



- 2 The program will start by displaying the version number as shown below.




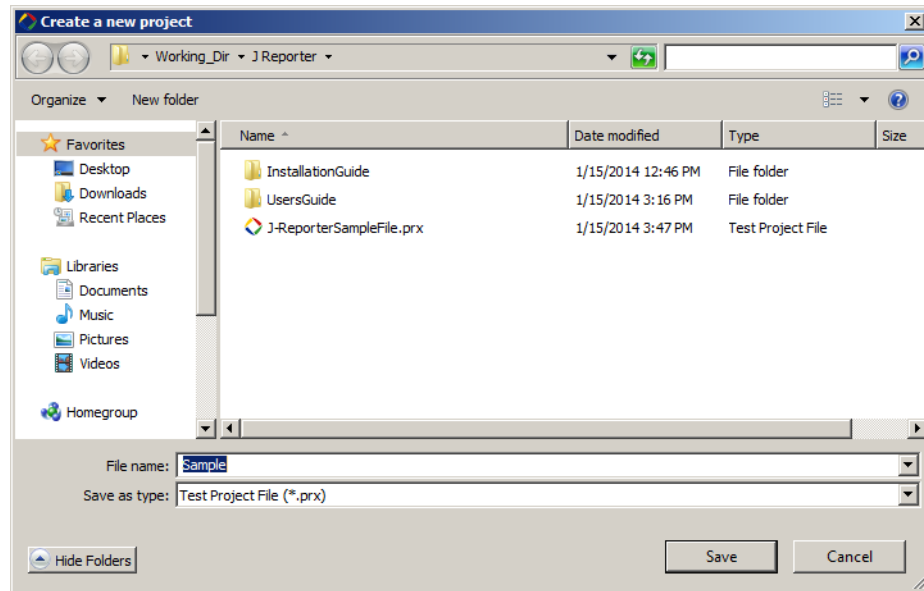
Project Management

This chapter describes how to use the J-Reporter to manage projects and import, export, and view the test results. The topics discussed in this chapter are as follows:

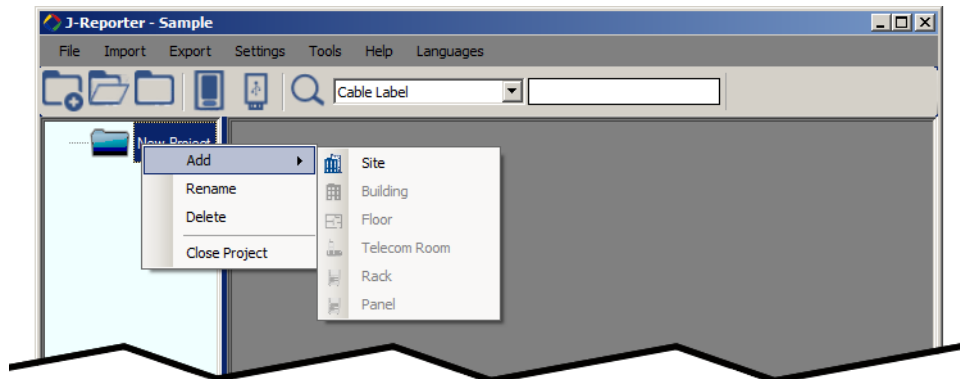
- [“Creating a New Project” on page 4](#)
- [“Opening an Existing Project” on page 5](#)
- [“Importing the Test Results from a Device” on page 6](#)
- [“Importing the Test Results from a USB Flash Drive” on page 8](#)
- [“Exporting the Test Results” on page 9](#)
- [“Viewing the Device on your Workstation” on page 10](#)

Creating a New Project

- 1 By default, a new project will be created when you run the program.
Alternatively, select **File > New Project** or click the  New Project icon.
- 2 You will be prompted to save your file when you create a new project. Choose where the new project file will be saved and click 'Save' to proceed.



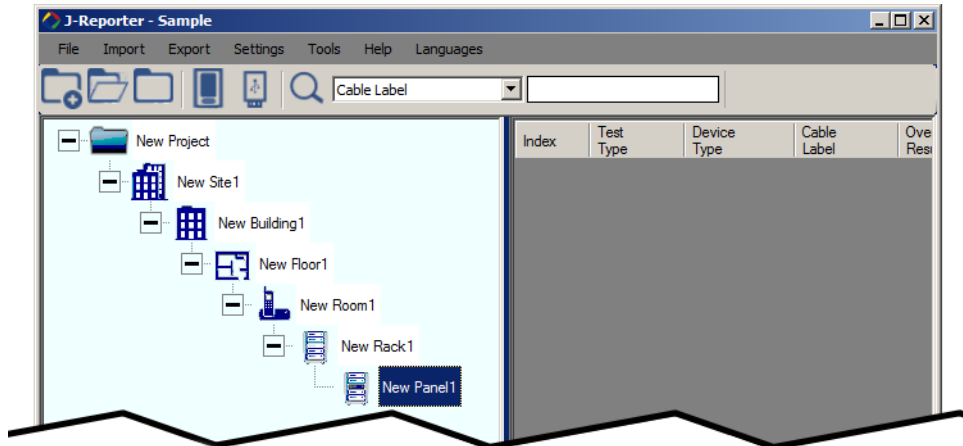
- 3 Right-clicking the icons in the left panel will display the following options:




- > **Add** – Adds a new site to the selected project
- >> **Building** – Adds a new building sub-item to the selected site
- >>> **New Floor** – Adds a new floor sub-item to the selected building
- >>>> **New Room** – Adds a new room sub-item to the selected floor
- >>>>> **New Rack** – Adds a new rack sub-item to the selected room
- >>>>>> **New Panel** – Adds a new panel sub-item to the selected rack

- > **Rename** – Renames the selected item
- > **Delete** – Deletes the selected item
- > **Close Project** – Closes the selected project

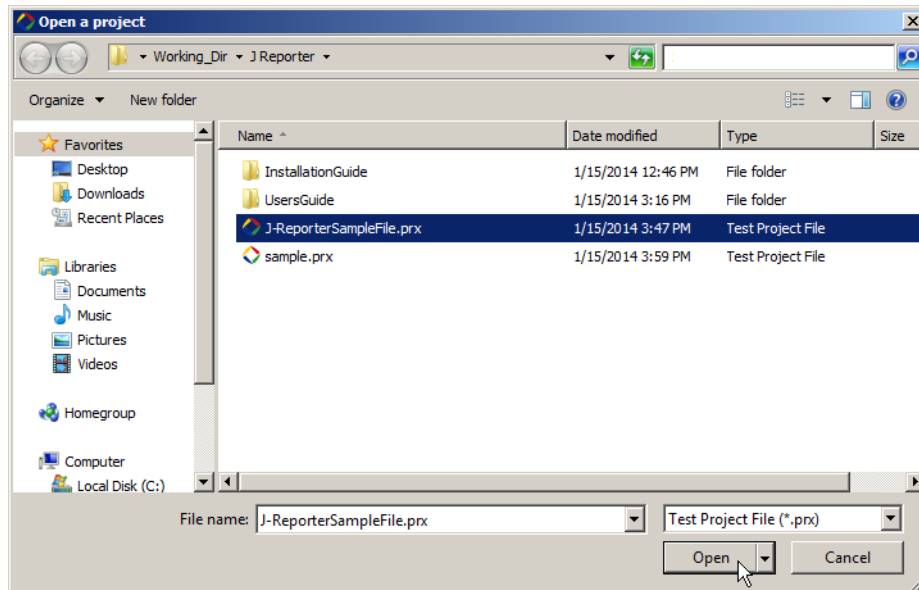
Once the menu hierarchy is selected, the left panel can resemble the following.



Opening an Existing Project

- 1 Select **File > Open** or click the  Open Project icon.

Locate your project (*.prx) file and click 'Open' to proceed.



Importing the Test Results from a Device

- 1 Ensure Certifier40G is connected to your workstation via an USB cable.




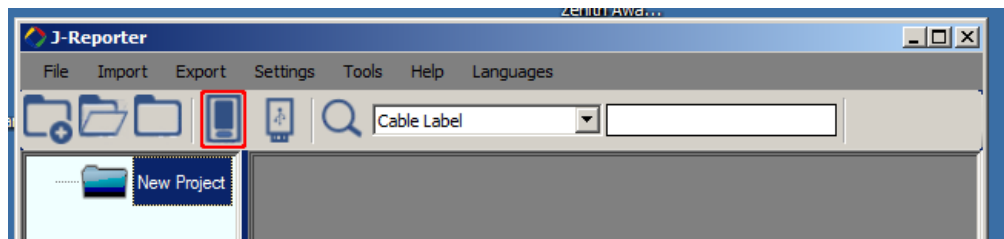
- 2 You may be prompted to install Microsoft Windows Mobile Device Center. Click 'Accept' to install the required drivers.



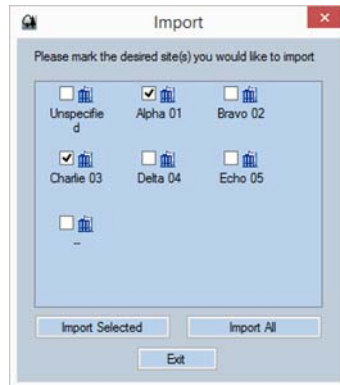
- 3 The Status bar will indicate "Connected" once your workstation is linked to the device.



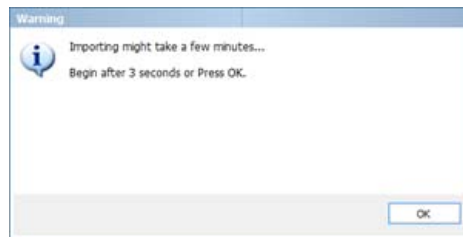
- 4 Select **Import > Device** or click the  'Device' icon as shown below.



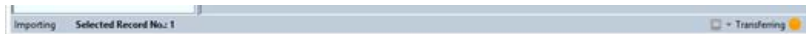
- 5 Select the test results you wish to import and click 'Import Selected' to proceed or you can click 'Import All' to import all test results.




- 6 Please wait while the import process begins or click 'OK' to start it.

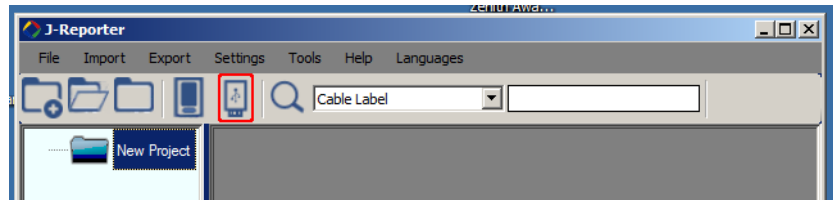


- 7 The Status bar will display the "Transferring" message during the import process.



Importing the Test Results from a USB Flash Drive

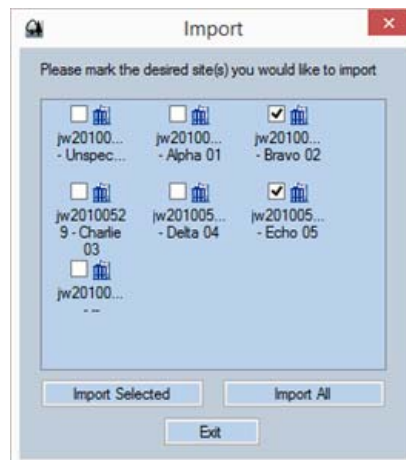
- 1 Select **Import > USB Flash Drive** or click the  'USB Flash Drive' icon as shown below.



- 2 Select the drive you wish to import the test results from. Click 'Import' to proceed.



- 3 Select the test results you wish to import and click 'Import Selected' to proceed or you can click 'Import All' to import all test results.

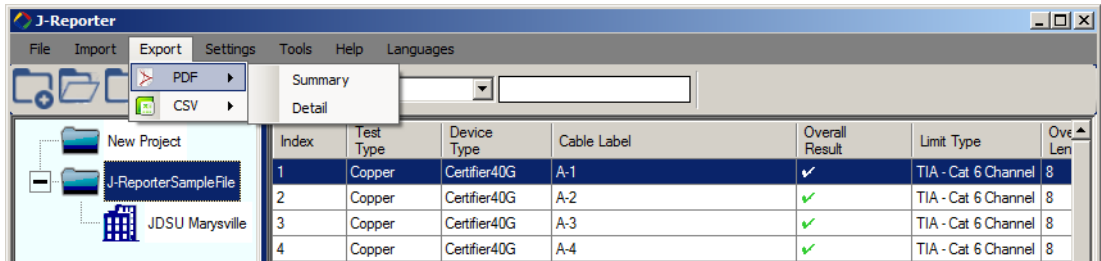


- 4 The Status bar will display the "Transferring" message during the import process.

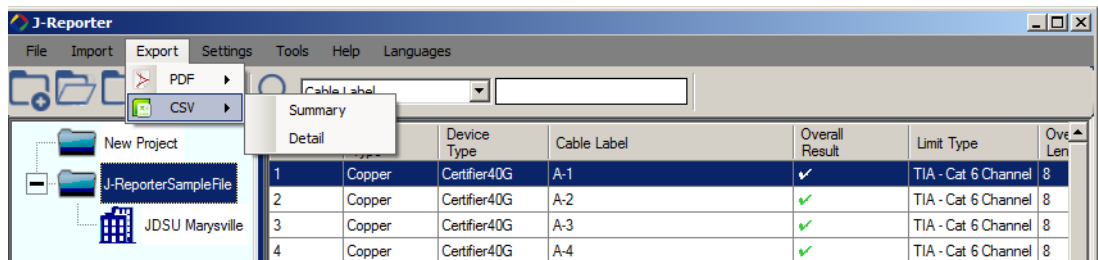


Exporting the Test Results

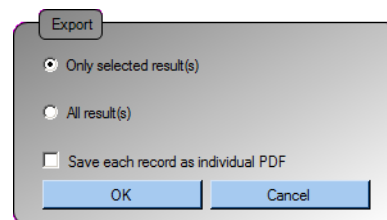
- 1 Export the selected test report based on the file format.
 - Select **Export > PDF** to export the selected test report in PDF format.



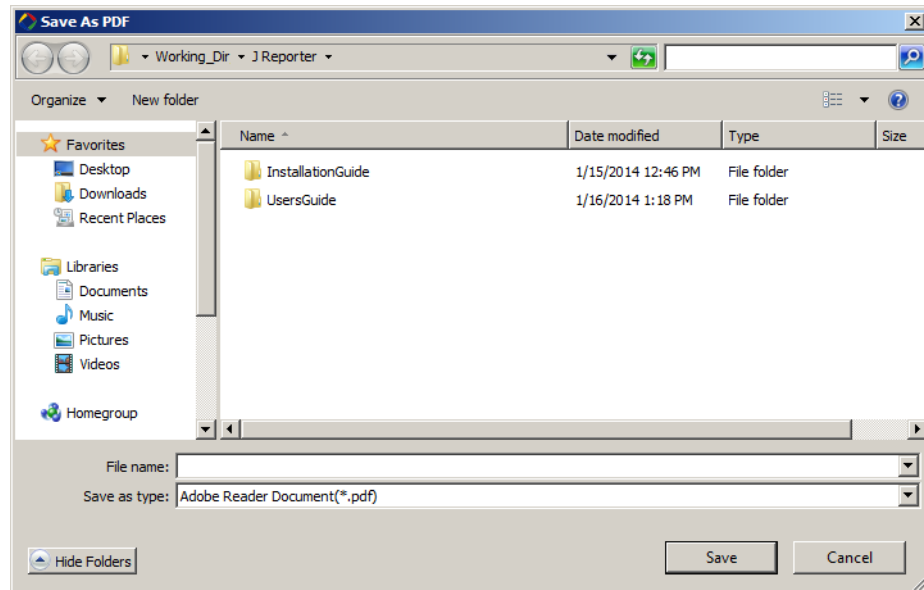
- Select **Export > CSV** to export the selected test report in CSV format.





- 2 You will be given the option to import “Only selected result(s)” or “All result(s)” after selecting either ‘Summary’ or ‘Detailed’ test results. Select the required test report options and click ‘OK’ to proceed.



- 3 You will be prompted to save the exported results after selecting either 'Summary' or 'Detail'. Choose the directory in which to save the results, enter a file name and click 'Save' to proceed.



Viewing the Device on your Workstation

- 1 After Certifier40G is connected to your workstation, click the device icon  next to the  indicator on the status bar as shown below.



- 2 Choose 'Device Information' to view the device's serial number, software version and calibration date.



- 3 Choose 'Remote Display' to access the Local unit remotely via your workstation. Accessing this option will allow advanced functions such as screen capturing (image), action recording (video), screen magnifying (zoom), etc.

Data Management

This chapter describes the functionality of the J-Reporter software. Topics discussed in this chapter are as follows:

- [“Viewing the Test Results” on page 12](#)
 - [“Viewing the Test Results – Inverting Y Axis” on page 16](#)
 - [“Viewing the Test Results – Linear & Logarithmic” on page 17](#)
 - [“Viewing the Test Results – Markers” on page 18](#)
- [“Editing Information” on page 19](#)
- [“Searching for Information” on page 22](#)

Viewing the Test Results

- 1 After importing the test results, summarized data will be displayed.
 - Clicking on the Project name displays all test results.
 - Clicking on the Site name displays only test results saved within the site.

Legend

✓ Pass
 ✓* Marginal Pass
 ✗ Fail
 ✗* Marginal Fail

The screenshot shows the J-Reporter application window. On the left is a project tree with 'New Project' and 'J-ReporterSampleFile' containing 'JDSU Marysville'. The main area displays a table of test results with columns: Index, Test Type, Device Type, Cable Label, Overall Result, Limit Type, Overall Length (m), NEXT Margin (dB), RL Margin (dB), and Time Stamp. Below the table are two summary panels: 'Summary' and 'Overall Result'.

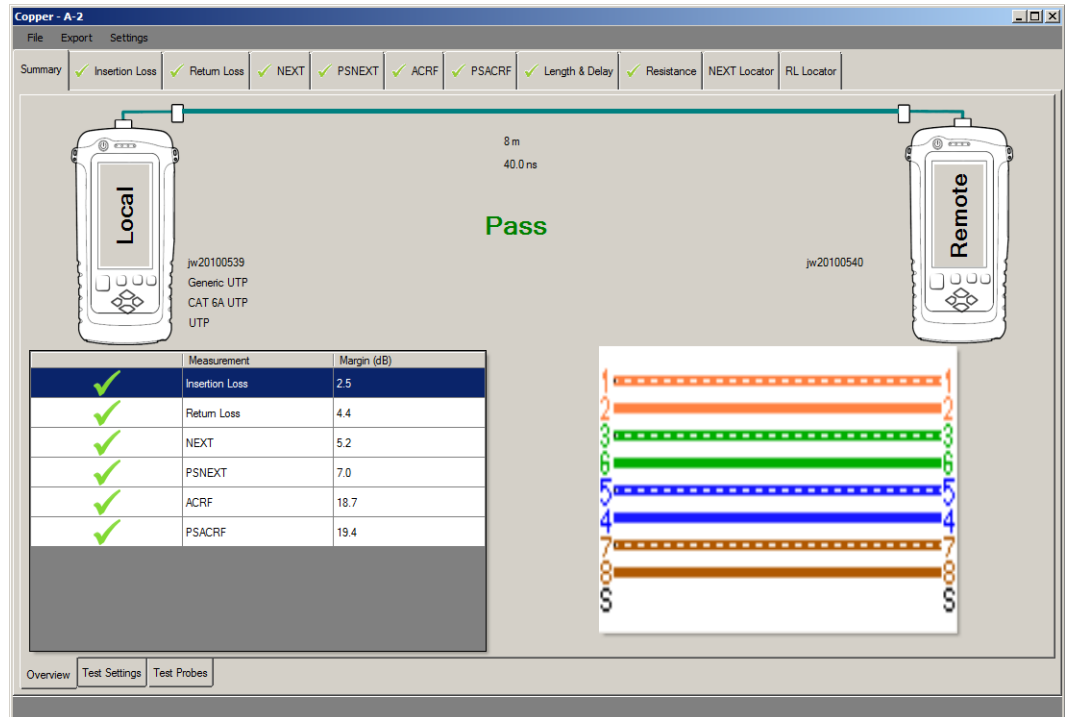
Index	Test Type	Device Type	Cable Label	Overall Result	Limit Type	Overall Length (m)	NEXT Margin (dB)	RL Margin (dB)	Time Stamp
1	Copper	Certifier40G	A-1	✓	TIA - Cat 6 Channel	8	5.1	4.4	12/3/2013 7:44 PM
2	Copper	Certifier40G	A-2	✓	TIA - Cat 6 Channel	8	5.1	4.4	12/3/2013 7:44 PM
3	Copper	Certifier40G	A-3	✓	TIA - Cat 6 Channel	8	5.2	4.3	12/3/2013 7:44 PM
4	Copper	Certifier40G	A-4	✓	TIA - Cat 6 Channel	8	5.2	4.3	12/3/2013 7:46 PM
5	Copper	Certifier40G	A-5	✓	TIA - Cat 6 Channel	8	5.2	4.3	12/3/2013 7:48 PM
6	Copper	Certifier40G	A-6	✓	TIA - Cat 6 Channel	8	5.5	4.3	12/3/2013 7:52 PM
7	Copper	Certifier40G	A-7	✓	TIA - Cat 6 Channel	8	5.6	4.2	12/3/2013 7:55 PM
8	Copper	Certifier40G	A-8	✓	TIA - Cat 6 Channel	8	5.6	4.2	12/3/2013 7:57 PM
9	Copper	Certifier40G	A-9	✓	TIA - Cat 6 Channel	8	5.6	4.2	12/3/2013 7:58 PM
10	Copper	Certifier40G	A-10	✓	TIA - Cat 6 Channel	8	5.5	4.2	12/3/2013 8:03 PM
11	Copper	Certifier40G	A-11	✓	TIA - Cat 6 Channel	8	5.6	4.1	12/3/2013 8:10 PM
12	OTDR	T-BERD 2000	CABLE LAX is t...	✓					7/29/2013 2:47 PM
13	OTDR	T-BERD 4000	Charlene	✓					4/5/2011 9:58 AM
14	OTDR	MTS 2000	edgastespecial	✓					5/10/2012 11:48 ...
15	OTDR	MTS 2000	CABLE_FIBER...	✓					12/10/2013 4:20 ...
16	OTDR	MTS 2000	CABLE_FIBER...	✓					12/10/2013 4:20 ...

Summary	
Local Ser. No.	jw20100539
Remote Ser. No.	jw20100540
Cable Manufacturer	Generic UTP
Cable Name	CAT 6A UTP
Cable Type	UTP
Connector Manufacturer	Shielded Connector
Connector Name	STP Mod Jack 6
Connector Type	Shielded
Limit	TIA - Cat 6 Channel
A-1	

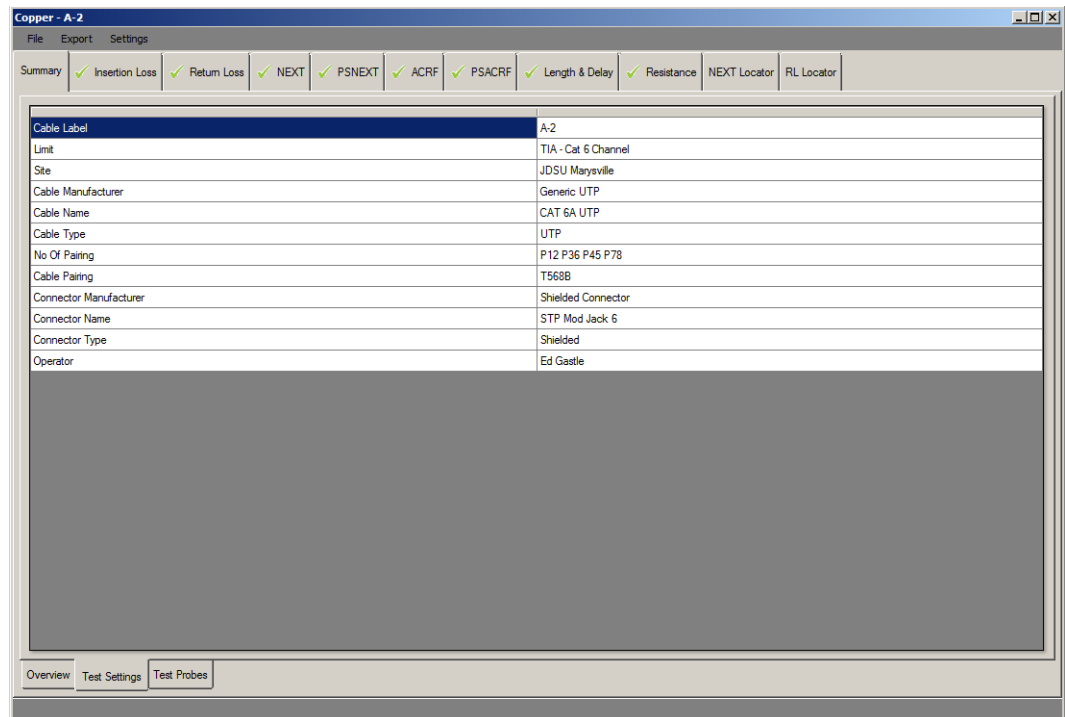
Overall Result	
Measurement	Margin
Length (m)	8
Delay (ns)	40.0
Cable NVP (%)	70
Resistance (Ohms)	2.8
Insertion Loss (dB)	2.5
Return Loss (dB)	4.4
NEXT (dB)	5.1
PSNEXT (dB)	6.9
ACRF (dB)	18.6
PSACRF (dB)	20.6
ACRN (dB)	-
PSACRN (dB)	-

Total Records: 16 Selected Record No: 1

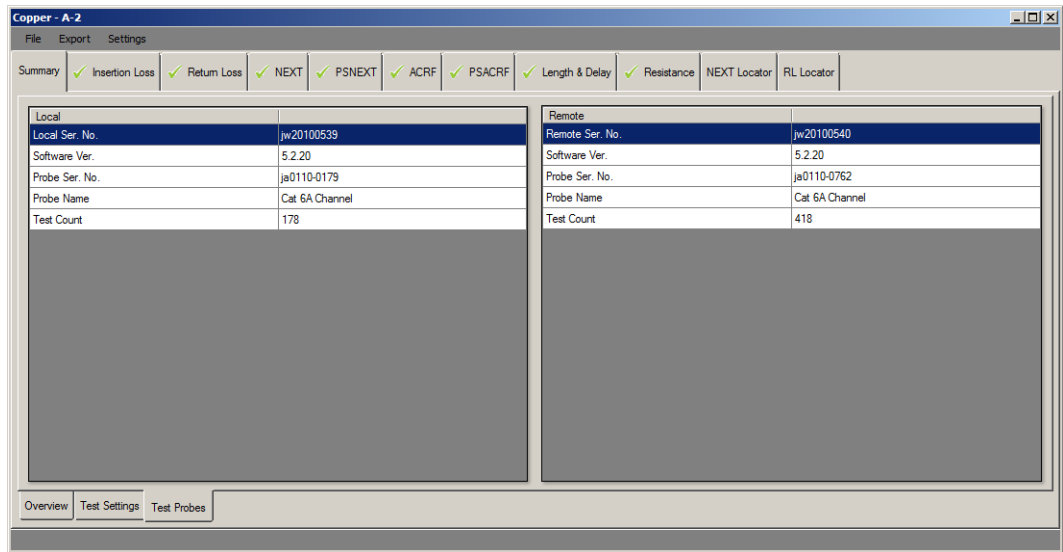
- 2 Double clicking a test result will display more comprehensive results of the test.
 - The 'Overview' tab displays the summary of the selected results.



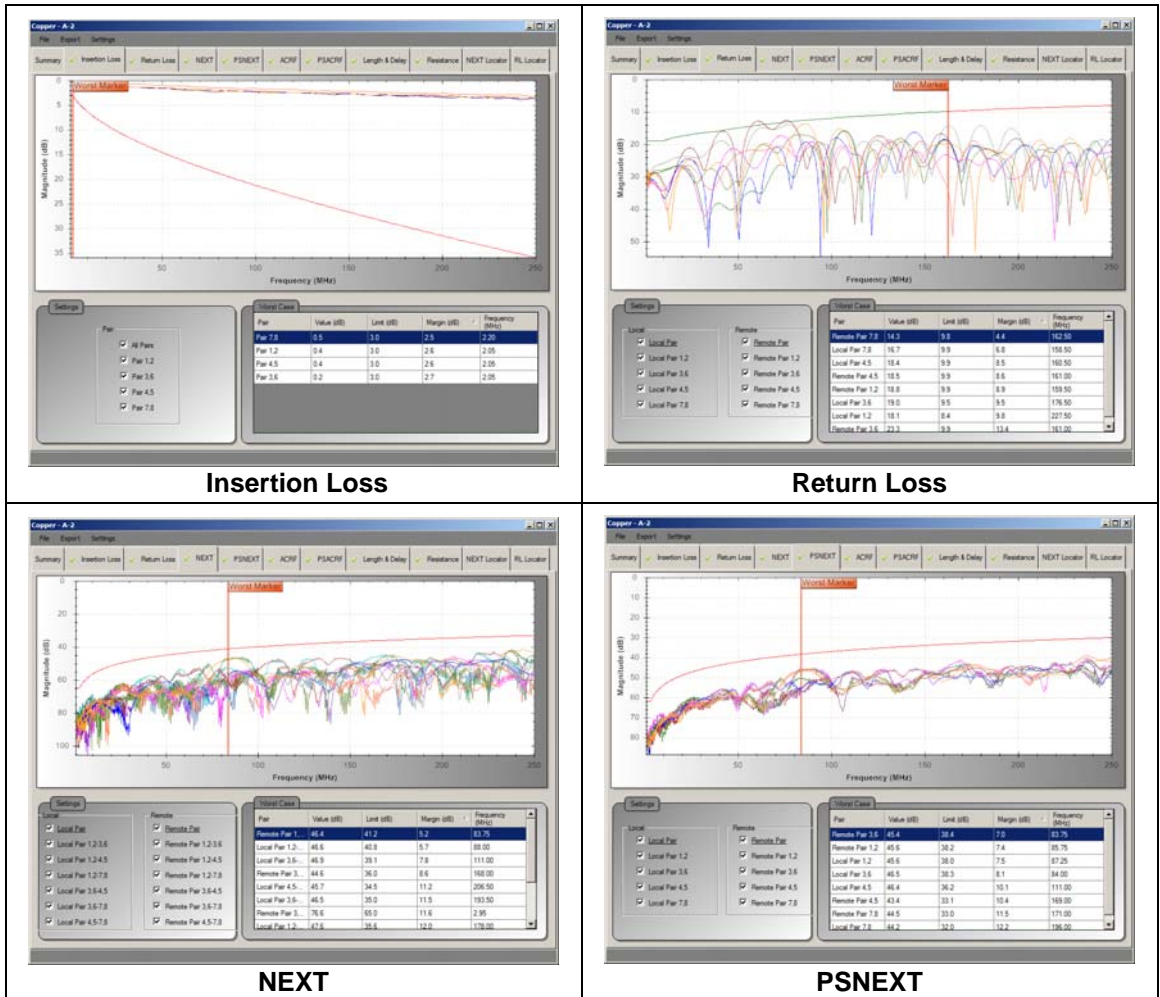
- The 'Test Settings' tab displays the configurations used for the selected results.

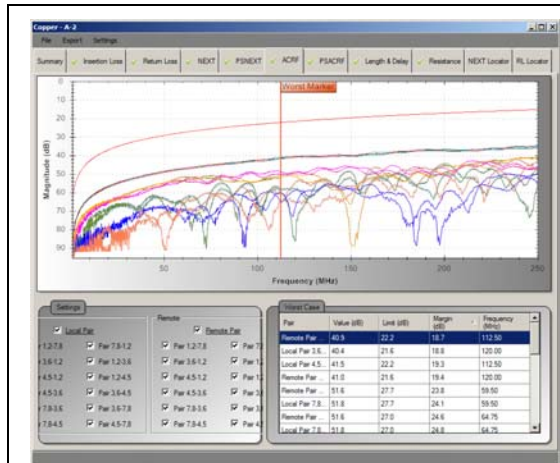


- The 'Test Probes' tab displays information on the hardware used to obtain the results.

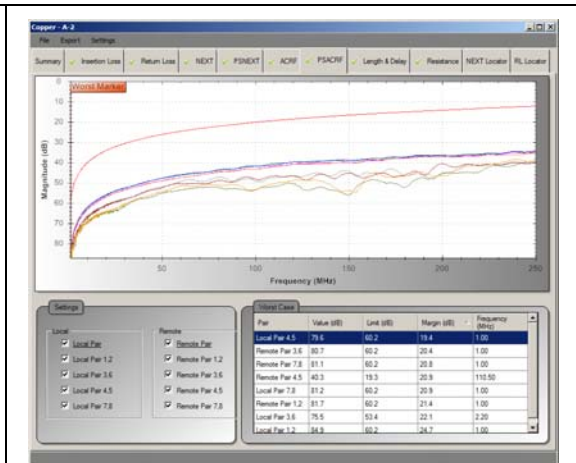


- 3 Click on the individual tab to display chart, worst marker and other detailed information. Examples of each of the ten tabs are displayed in the following table.

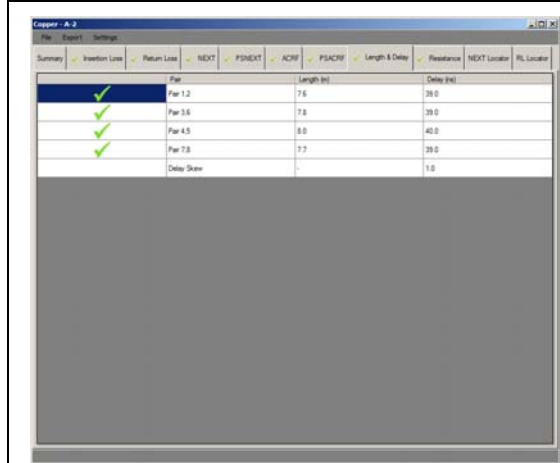




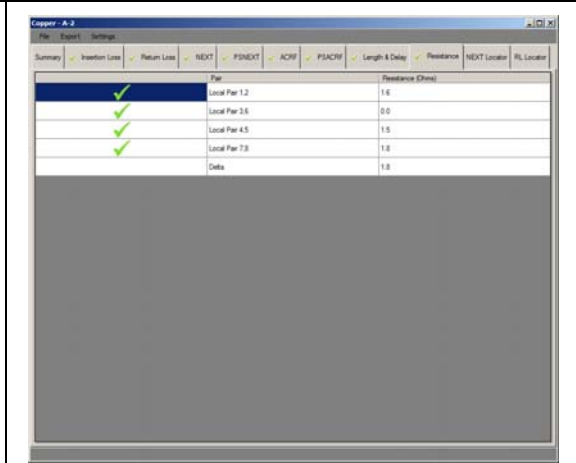
ACRF



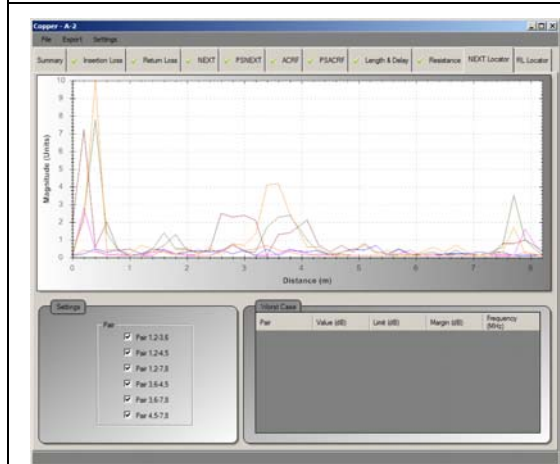
PSACRF



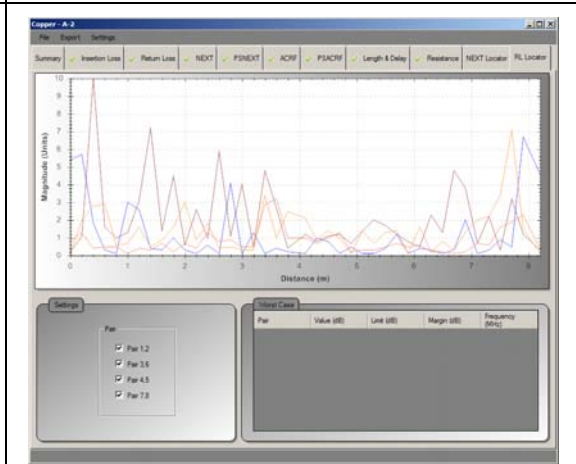
Length & Delay



Resistance



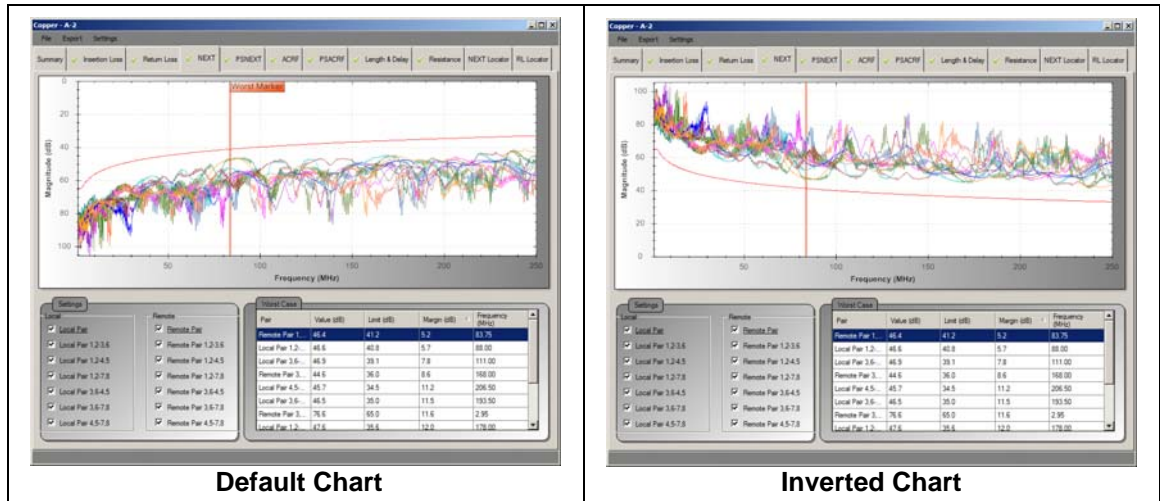
NEXT Locator



RL Locator

Viewing the Test Results - Inverting Y Axis

Select **Settings > Y Axis (Vertical) Orientation > Inverted** to display the test results table inverted along the Y axis



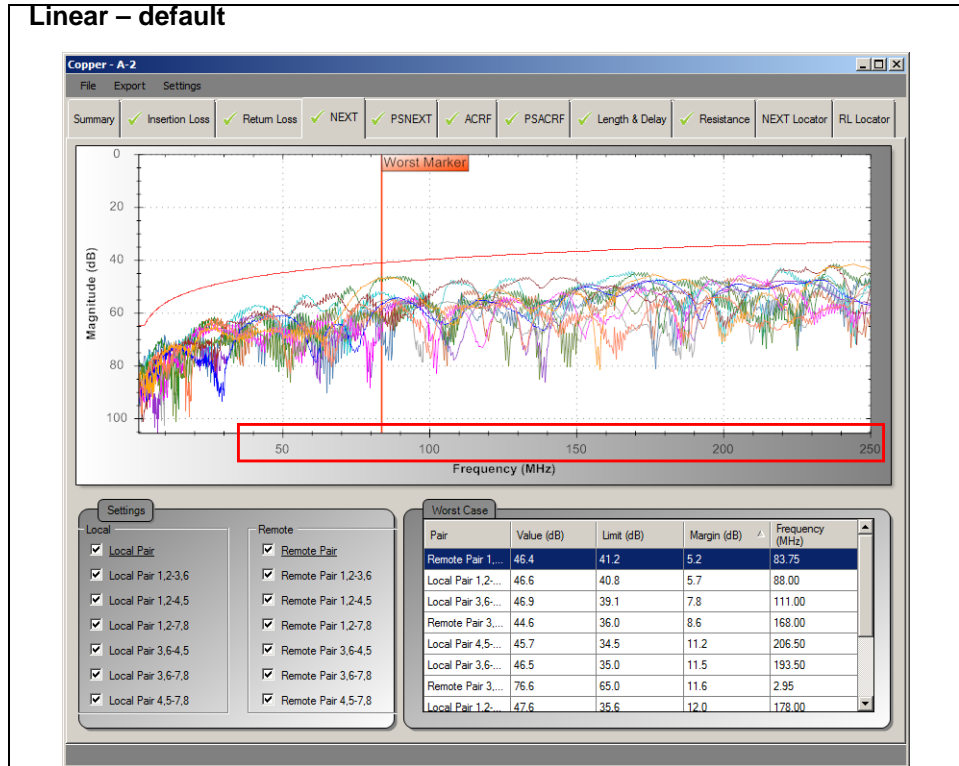
Default Chart

Inverted Chart

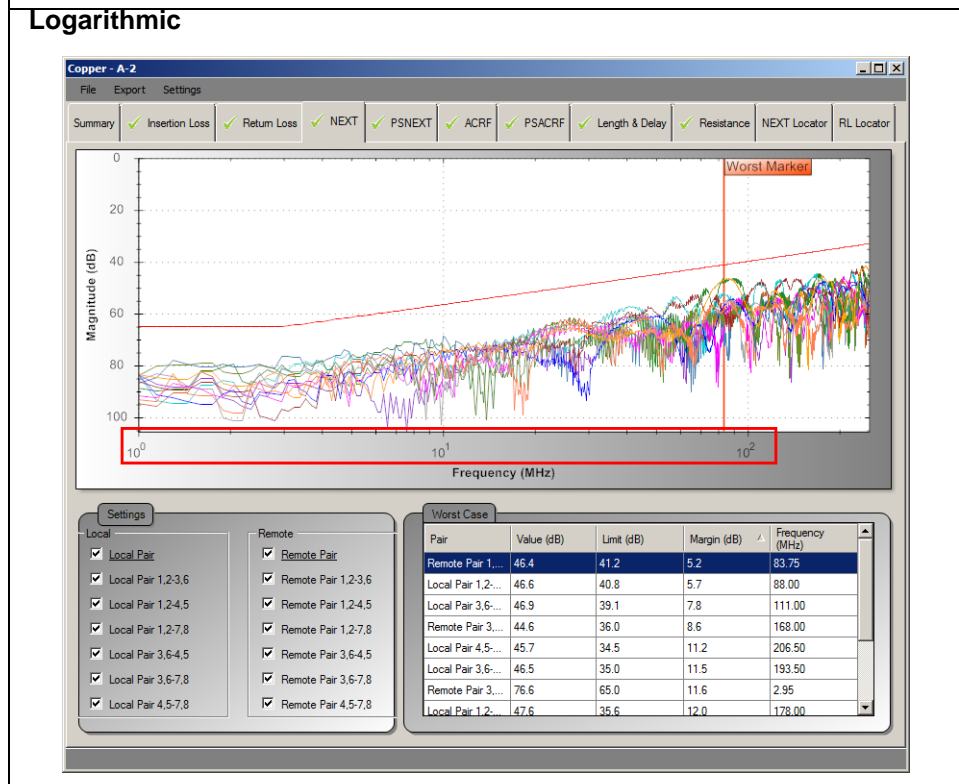
Viewing the Test Results – Linear & Logarithmic

Select **Settings > X Axis (Horizontal) Orientation**

Linear – default



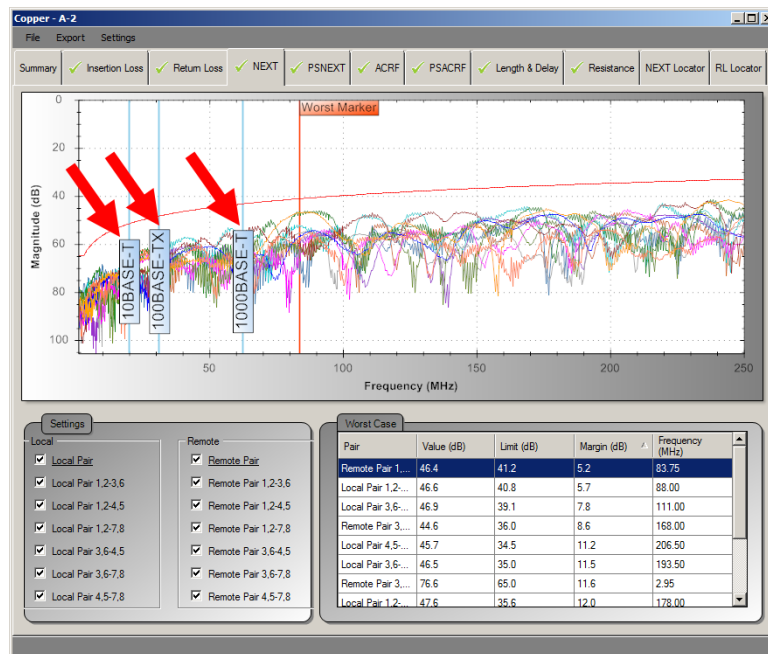
Logarithmic



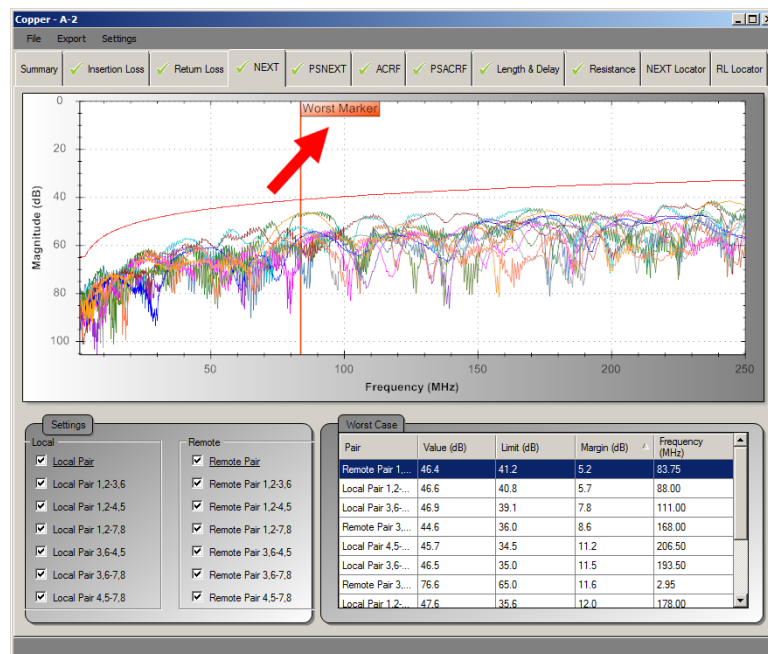
Viewing the Test Results – Markers

Select **Settings > Markers**

Ethernet Standards – Additional markers indicating frequencies of various Ethernet standards will be indicated for reference. E.g, 10BASE-T, 100BASE-T, 10GBASE-T & 40GBASE-T.

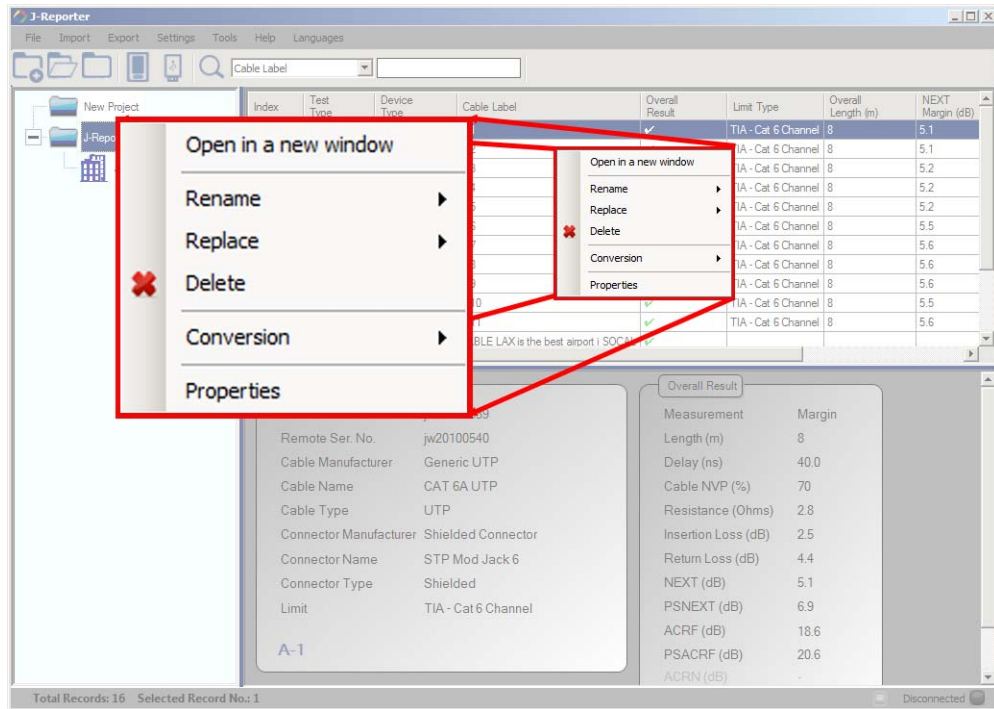


Worst Markers – Default

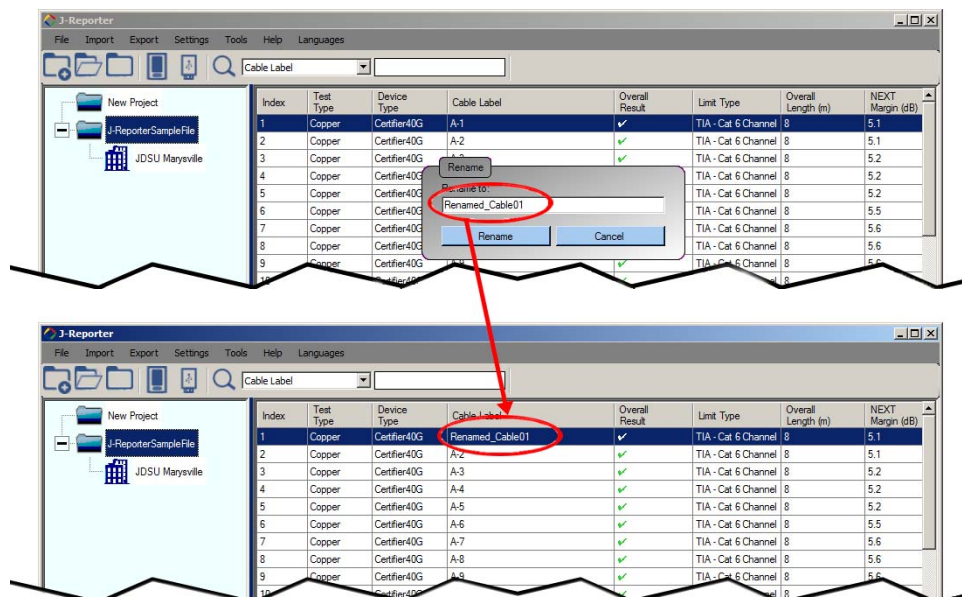


Editing Information

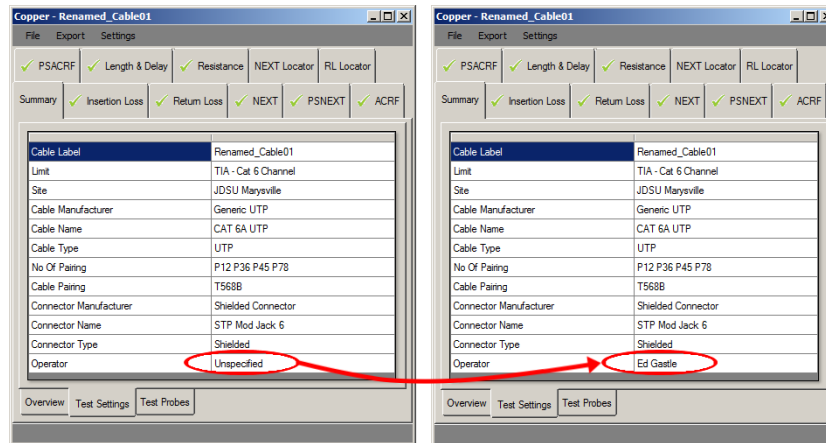
- 1 Right click at the results selection screen (right panel).



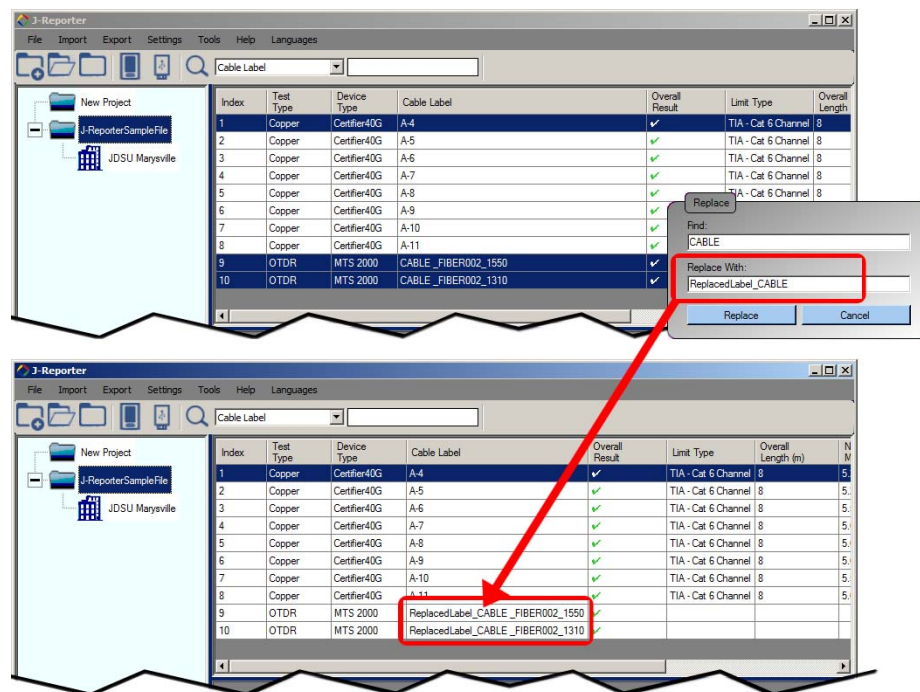
- 2 Select **Rename > Cable Label** to rename the selected result as shown.



- 3 Select **Rename > Operator Name** to rename the selected result.
The renamed Operator Name will be reflected at the 'Test Settings' tab in the detail results.

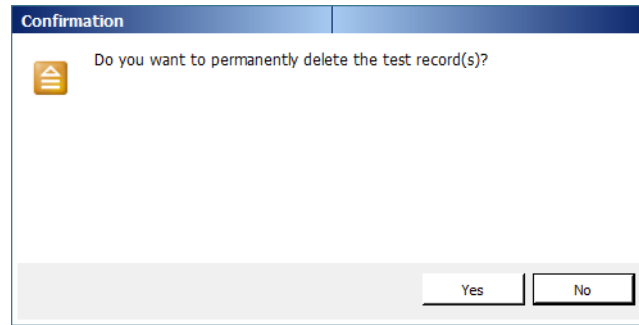


- 4 Select **Replace > Cable Label** to find words you wished to replace on the selected result(s).

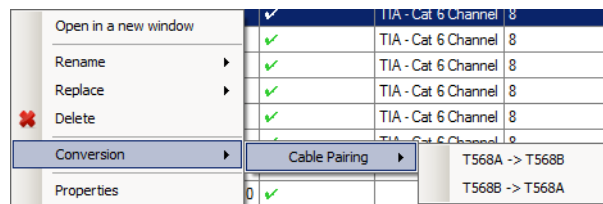


- 5 Select **Replace > Operator Name** to rename the selected result.
As with the renamed operator described in [step 3](#) above, the replaced Operator Name will be reflected at the 'Test Settings' tab in the detail results.

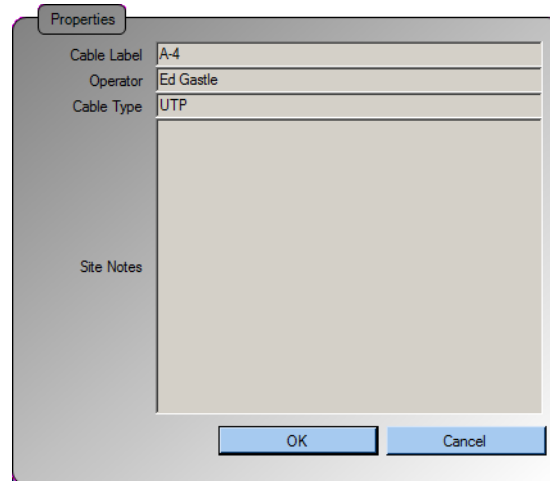
- 6 Select **Delete** to permanently delete a test result. Click 'Yes' to proceed.



- 7 Select **Conversion > Cable Pairing** to change between T568A to T568B cable pairing and T568B to T568A pairing. Default setting uses the T568B cable pairing.

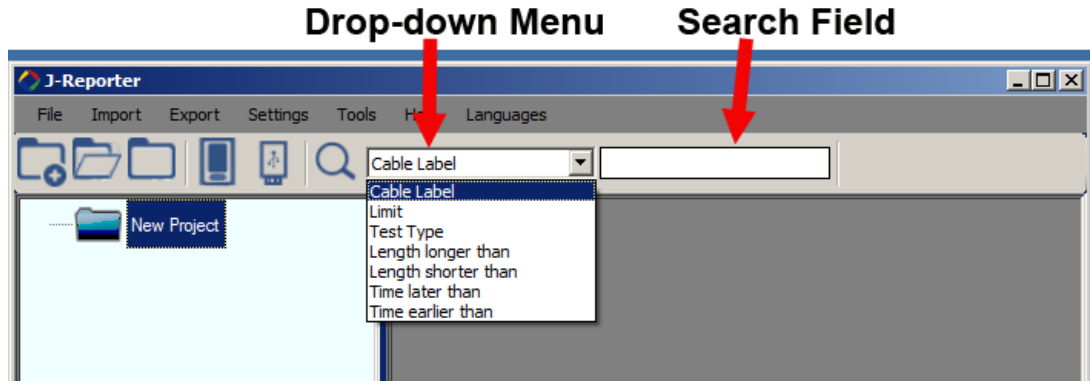



- 8 Select **Properties** to view user editable information on the selected result.



Searching for Information

- 1 Select type of search from the drop-down menu and input search value in the search field or select from the additional search options.



- 2 Press 'Enter' or click the 'Search' icon  on the left to begin search.

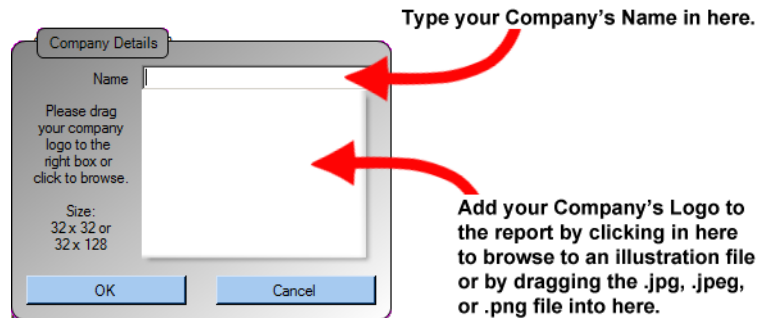
Setting Preferences

This chapter provides instructions for setting your preferences used by J-Reporter. Topics discussed in this chapter are:

- [“Personalizing the Test Results” on page 24](#)
- [“Choosing the Length Units” on page 25](#)
- [“Choosing the Report Format” on page 26](#)
- [“Selecting the Language” on page 27](#)

Personalizing the Test Results

- 1 Select **Settings > Company Details** to personalize test results with your corporate logo and company name.
- 2 Enter your company's name and click on the empty space to browse for image of the logo. Recommended size for logo – 32 x 32px or 32 x 128px. Click 'OK' to save.



- 3 Your company's name and corporate logo will be displayed on the top left hand corner of the next result exported.

JDS Uniphase Corporation

Copper Certification Report

Site :	JDSU Marysville
Operator :	Ed Gastle
Cable Label :	A-4

Limit :	TIA - Cat 6 Channel
Date & Time :	12/3/2013 7:46:07 PM
Cable Name :	CAT 6A UTP
Connector Name :	STP Mod Jack 6
Local :	jw20100539 Cat 6A Channel
Remote :	jw20100540 Cat 6A Channel

Choosing the Length Units

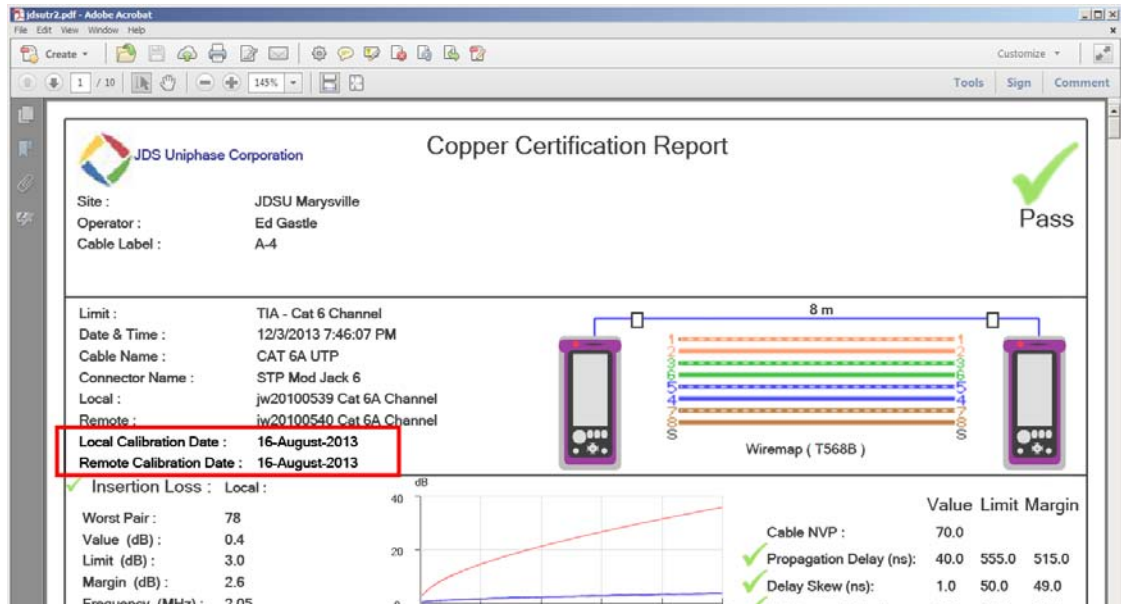
- 1 Select **Settings > Length Unit** to choose the length units to be displayed in either Meters or Feet on the test results.

Overall Result	
Measurement	Margin
Length (ft)	26.2
Delay (ns)	40.0
Cable NVP (%)	70
Resistance (Ohms)	1.5
Insertion Loss (dB)	2.5
Return Loss (dB)	4.3
NEXT (dB)	5.2
PSNEXT (dB)	7.0
ACRF (dB)	18.6
PSACRF (dB)	20.9
ACRN (dB)	-
PSACRN (dB)	-

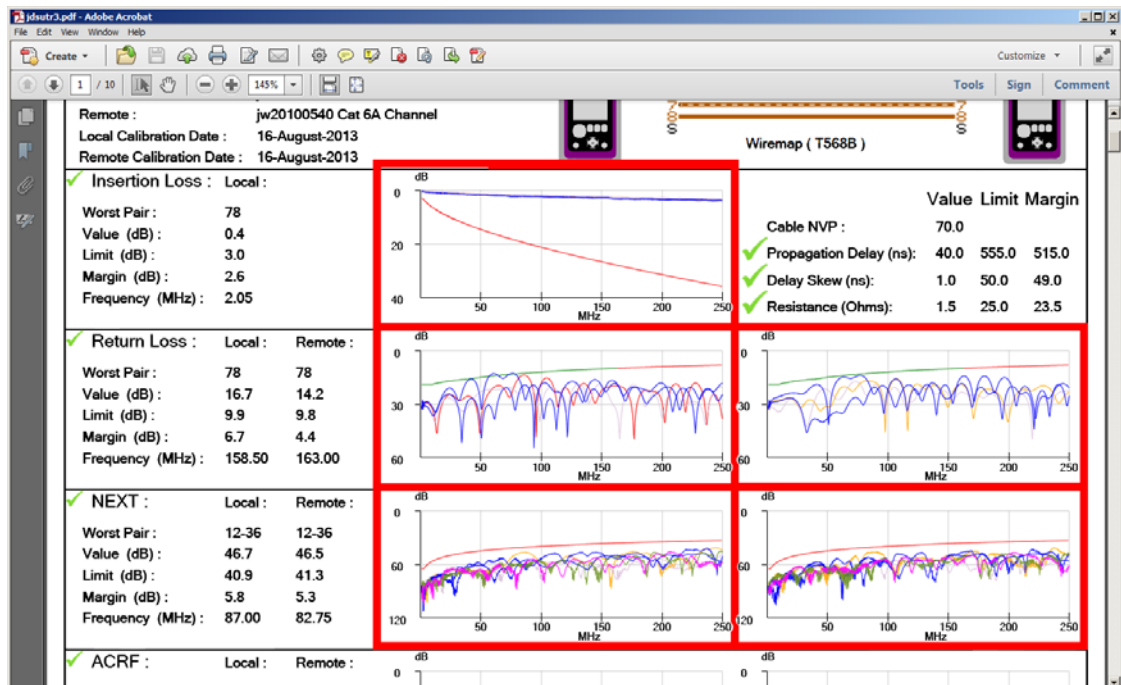
Overall Result	
Measurement	Margin
Length (m)	8
Delay (ns)	40.0
Cable NVP (%)	70
Resistance (Ohms)	1.5
Insertion Loss (dB)	2.5
Return Loss (dB)	4.3
NEXT (dB)	5.2
PSNEXT (dB)	7.0
ACRF (dB)	18.6
PSACRF (dB)	20.9
ACRN (dB)	-
PSACRN (dB)	-

Choosing the Report Format

- 1 Select **Settings > Report Format** to choose the format of the report.
 - **Calibration Date** (default) – last calibration date of the Certifier40G will be indicated on the report



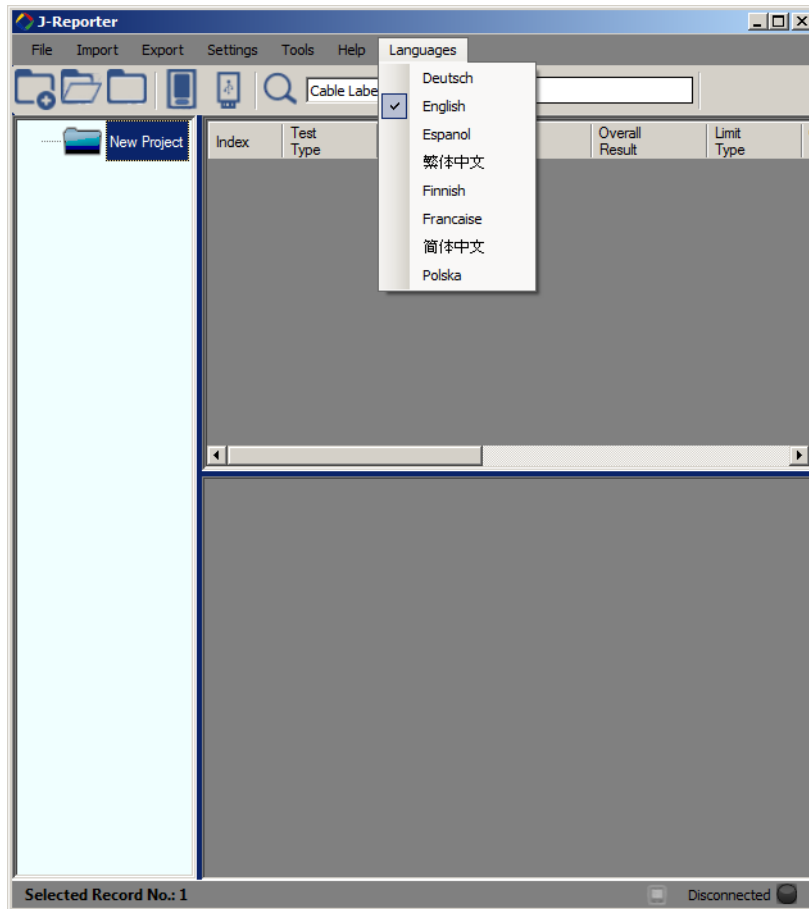
- **Y-axis Inverted** – all test results will generate charts with the Y-axis inverted



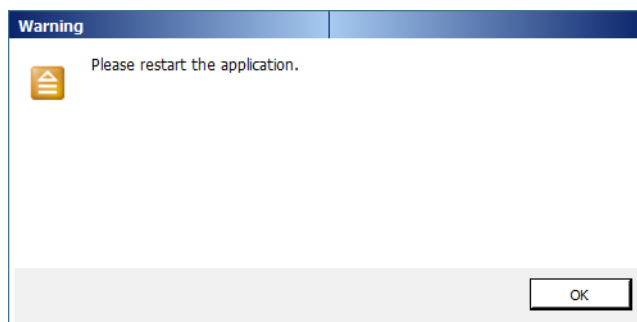
Selecting the Language

In addition to English, the default language, the following languages are available:
Deutsch, Espanol, Simplified & Traditional Chinese, Finnish, Francaise, and Polska

- 1 Select **Languages** and choose your preferred language.



- 2 Once you select a language, you will be prompted to restart J-Reporter. Click 'OK' to restart.



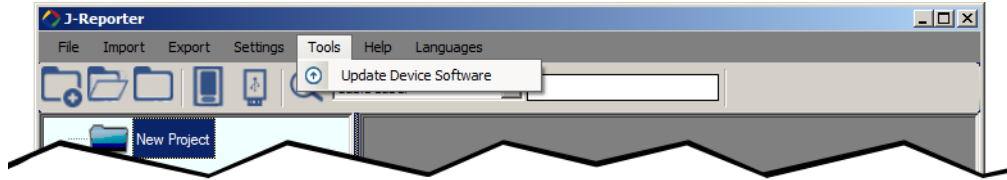
Updating Device Software

This chapter describes how the J-Reporter software can be updated when new versions are available. Topics discussed in this chapter are as follows:

- [“Updating the Device Software” on page 30](#)

Updating the Device Software

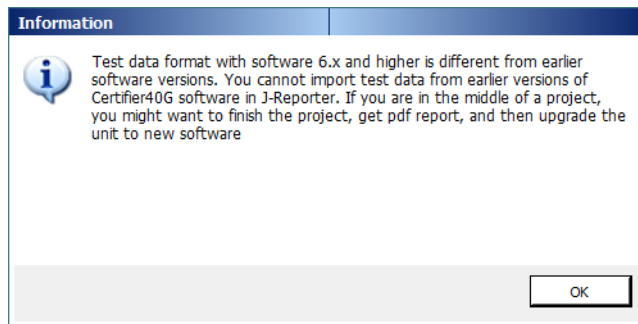
- 1 Select **Tools > Update Device Software**.



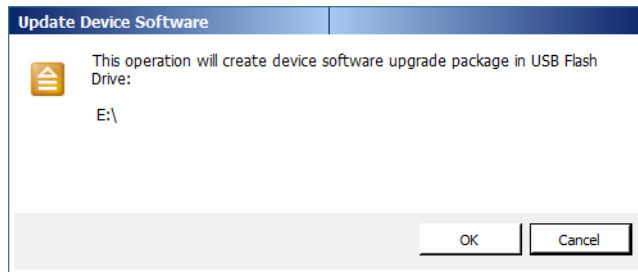
- 2 Ensure a USB flash drive has been connected to your workstation before proceeding with update.

In the event the USB flash disk is not present, you will be reminded to insert one.

- 3 Click 'OK' after reading the information message to proceed.



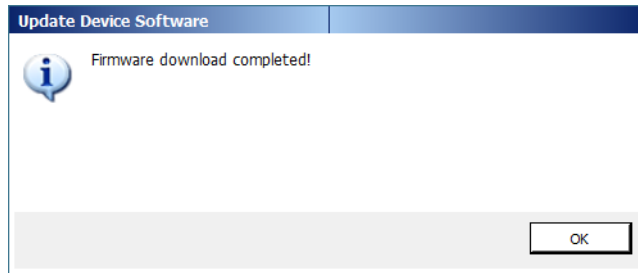
- 4 Click 'OK' to proceed with the update.



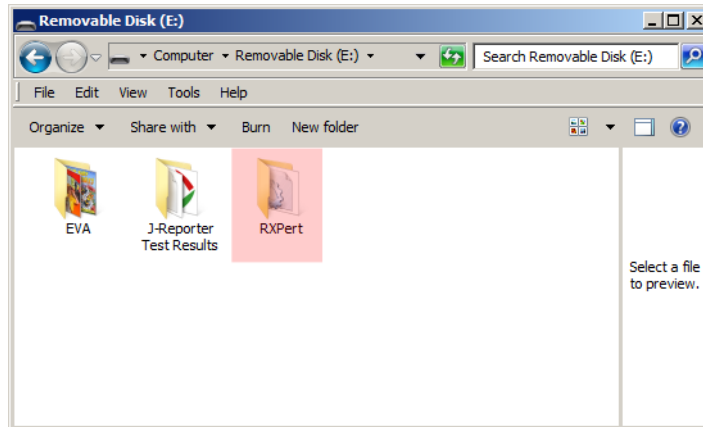
- 5 The Status bar will display the "Processing" status during the upgrade.



- 6 You will be informed when the upgrade is complete. Click 'OK' to proceed.



- 7 The files are now stored in folder "RXPert" folder on the USB flash disk.



Index

A

ACRF [15](#)
assistance, technical [viii](#)

B

building, adding to selected project [4](#)

C

cable label, renaming [19](#)
cable label, replacing [20](#)
cable pairing, converting [21](#)
calibration date on test results report [26](#)
Chinese application language [27](#)
company name and logo [24](#)
conventions, text, typographical, and symbol [vii](#)
convert cable pairing [21](#)

D

delay [15](#)
delete test results [21](#)
Deutsch application language [27](#)
device, viewing on workstation [10](#)

E

editing information [19](#)
Español application language [27](#)
Ethernet standards view [18](#)
existing project [5](#)
exporting test results [9](#)

F

feet [25](#)
Finnish application language [27](#)
flash drive [8](#)
floor, adding to selected project [4](#)
format of test results report [26](#)
Francaise application language [27](#)

I

importing test results [6, 8](#)
insertion loss [14](#)
installation guide [vi](#)
inverted Y axis on test results report [26](#)
inverted Y axis view [16](#)

J

J-Reporter, running [2](#)

L

language, changing the application [27](#)
length [15](#)
length units on test results [25](#)
linear and logarithmic views [17](#)
logo on test results [24](#)

M

meters [25](#)
microsoft [6](#)
mobile device center [6](#)

N

new project [4](#)
 NEXT [14](#)
 NEXT locator [15](#)

O

open project [5](#)
 operator name, renaming [20](#)
 operator name, replacing [20](#)
 Overview tab [13](#)

P

panel, adding to selected project [4](#)
 personalizing test results [24](#)
 Polska application language [27](#)
 project
 existing [5](#)
 new [4](#)
 PSACRF [15](#)
 PSNEXT [14](#)

R

rack, adding to selected project [4](#)
 rename cable label [19](#)
 rename operator name [20](#)
 replace cable label [20](#)
 replace operator name [20](#)
 report format of test results [26](#)
 requirements, system [2](#)
 resistance [15](#)
 return loss [14](#)
 RL locator [15](#)
 room, adding to selected project [4](#)
 running J-Reporter [2](#)

S

safety definitions [viii](#)
 search fields [22](#)
 search for test results [22](#)
 simplified Chinese application language [27](#)
 symbols for hazards [vii](#)
 system requirements [2](#)

T

T568A/T568B [21](#)

Test Probes tab [14](#)

test results
 ACRF [15](#)
 company name and logo [24](#)
 deleting [21](#)
 exporting [9](#)
 importing from device [6](#)
 importing from USB [8](#)
 insertion loss [14](#)
 inverted Y axis view [16](#)
 legend [12](#)
 length and delay [15](#)
 length units [25](#)
 linear and logarithmic views [17](#)
 markers view [18](#)
 NEXT [14](#)
 NEXT locator [15](#)
 Overview tab [13](#)
 personalizing [24](#)
 PSACRF [15](#)
 PSNEXT [14](#)
 report format [26](#)
 resistance [15](#)
 return loss [14](#)
 RL locator [15](#)
 searching [22](#)
 Test Probes tab [14](#)
 Test Settings tab [13](#)
 viewing [12–18](#)

test results report
 calibration date [26](#)
 inverted Y axis [26](#)

Test Settings tab [13](#)

text formatting conventions [vii](#)
 traditional Chinese application language [27](#)

U

USB flash drive [8](#)

V

viewing device [10](#)
 viewing test results [12–18](#)
 viewing test results, inverted Y axis [16](#)
 viewing test results, linear and logarithmic [17](#)
 viewing test results, markers [18](#)

W

windows [6](#)
 worst markers view [18](#)

Y

Y axis inverted on test results report [26](#)



Network and Service Enablement Regional Sales

North America
Toll Free: 1 855 ASK JDSU

Latin America
Tel: +55 11 5503 3800

Asia Pacific
Tel: +852 2892 0990

EMEA
Tel: +49 7121 86 2222

www.jdsu.com

P/N 22057094, Rev. 0
March 2014
English