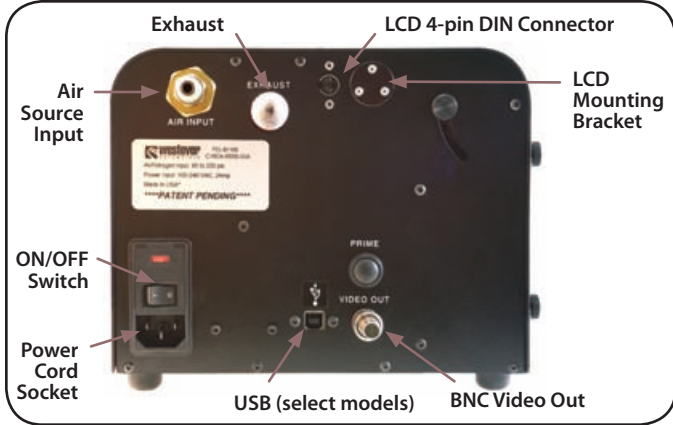


CleanBlast®

Fiber Optic Connector Cleaning System

Bench-top Systems

Quick Start

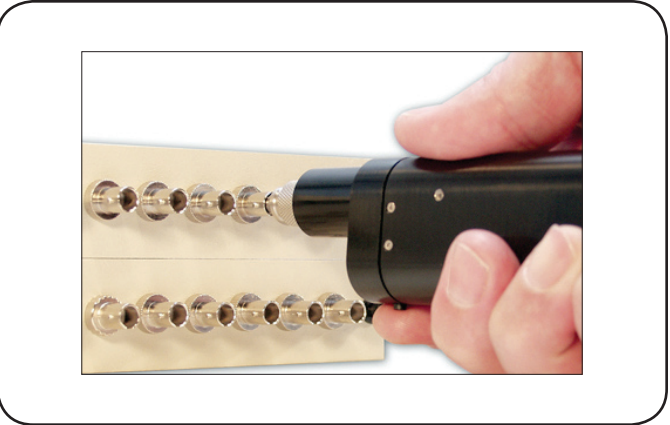


Step 1. Complete all necessary connections:

- A. Install external air source to the Air Input Nozzle**
- 1/4" Industrial male quick-connect fitting needed
 - 60–250psi of clean, dry compressed air or nitrogen
- B. Connect power cord to socket and power source.**

If applicable, connect video source:

- Attach and connect LCD**
- Attach bracket to LCD, and then to mounting flange
 - Connect LCD cable to 4-pin DIN connector
- OR, connect BNC cable to Video Out connector**
OR, connect USB to USB port (digital models only)



Step 5. Insert the tip into a mating adapter

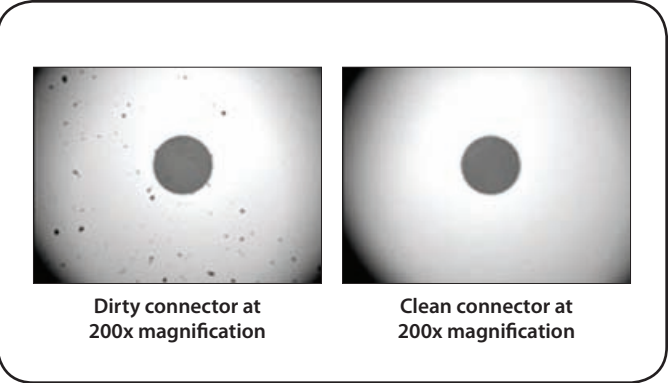
- To initiate the cleaning cycle:**
- Plug the cleaning tip into the bulkhead mating adapter.
 - Apply slight pressure against the mating adapter. Gently slide and hold the handset forward.
- Notice the POWER/READY LED turns green.**
- Press the RUN button on the handset.



If applicable, attach a Westover Scientific Video Inspection Probe.

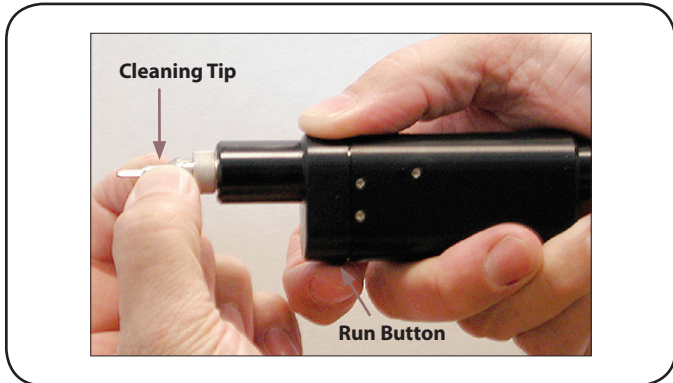
Step 2. Power the system ON

- The Power/Ready LED will be lit RED**
- The Red LED indicates there is AC power connected to the system.
 - The cleaning cycle will not activate when this LED is Red.
 - The safety switch in the handset prevents accidental discharge of the cleaning cycle.



Step 6. Inspect the connector

- Attach a tip to the Inspection Probe, and insert the Probe into the mating adapter.**
- Use the Focus Control to achieve a focused image of the fiber end-face.**
- The image is displayed on the PC monitor, LCD or video monitor.**
- Switch between High and Low Magnification with the Magnification Control (dual-mag probes only).**
- Capture images using the QuickCapture™ Button (select models).**



Step 3. Attach a cleaning tip

Step 4. Prime the system.

If you are using the system for the first time, or if it has not been in use for over 4 hours, you will need to prime the dead zone of the solvent line.

Priming the system may take 2-3 cleaning cycles. Typically, it is only necessary to use one cleaning cycle per connector.

Customer Service

Westover Scientific
 18421 Bothell-Everett Hwy., Suite 110
 Mill Creek, WA 98012
 Phone: (800) 304-3202 or (425) 398-1298
 Fax: (425) 398-0717
 E-mail: info@westoverscientific.com
 Web: www.westoverfiber.com

Technical Information

Cleaning cycles: You should expect the following number of cleaning cycles per FULL solvent reservoir, depending upon the type of cleaning tip used:

2.5mm tip:	9,500 cycles
1.25mm tip:	12,500 cycles
Ribbon fiber:	9,500 cycles

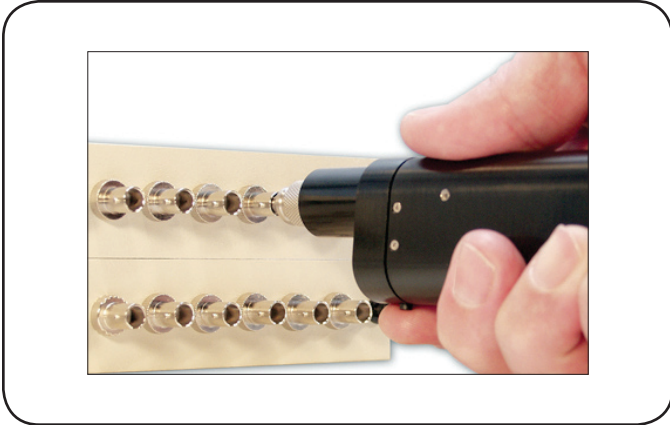
Filter change -You should replace the two fine air filters every 100,000 cycles - "Service LED" will indicate need.

Quick Start



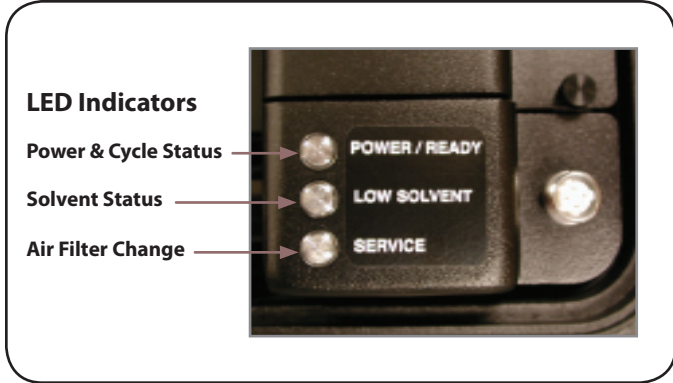
Step 1. Complete all necessary connections:

- A. **Connect power cord to power source.**
 - B. **If applicable, connect video source: Attach and connect the LCD**
 - Attach LCD to the bracket inside the case lid
 - Connect the LCD cable to 4-pin DIN connector
- OR, connect BNC cable to Video Out connector, OR, connect USB cable to USB the port.**
- (Install FiberChek™ software on your PC before connecting the USB cable to the PC.)*
- If applicable, attach a Westover Scientific Inspection Probe.**



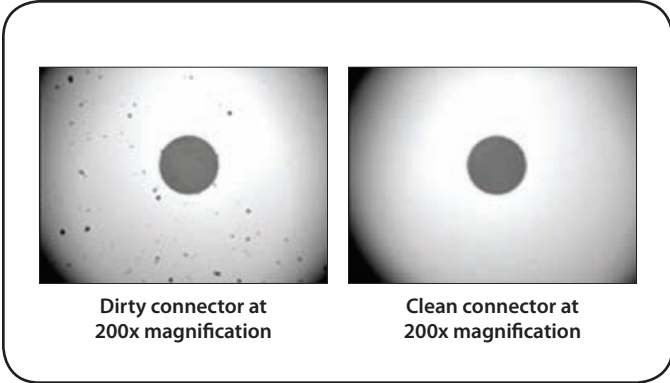
Step 5. Insert the tip into a mating adapter

- To initiate the cleaning cycle:**
- Plug the cleaning tip into the bulkhead mating adapter.
 - Apply slight pressure against the mating adapter. Gently slide and hold the handset forward.
- Notice the POWER/READY LED turns green.**
- Press the RUN button on the handset.



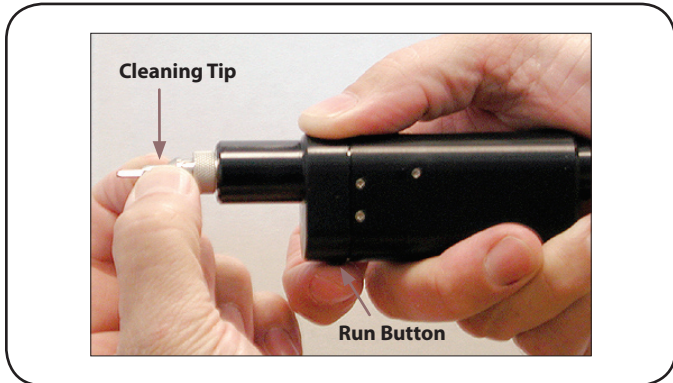
Step 2. Power the system ON

- A. **The Power/Ready LED will be lit RED**
 - The Red LED indicates there is AC power connected to the system.
 - The cleaning cycle will not activate when this LED is Red.
 - The safety switch in the handset prevents accidental discharge of the cleaning cycle.
- B. **The system's compressor will turn on.**
 - You may hear the compressor turn on when the power is switched on, and shut off after about 5 seconds. It will remain off until the cleaning cycle is activated.



Step 6. Inspect the connector

- A. **Attach a tip to the Inspection Probe, and insert the Probe into the mating adapter.**
- B. **Use the Focus Control to achieve a focused image of the fiber end-face.**
- C. **The image is displayed on the PC monitor, LCD or video monitor.**
- D. **Switch between High and Low Magnification with the Magnification Control (dual-mag probes only).**
- E. **Capture images using the QuickCapture™ Button (select models).**



Step 3. Attach a cleaning tip

Step 4. Prime the system.

If you are using the system for the first time, or if it has not been in use for over 4 hours, you will need to prime the dead zone of the solvent line.

Priming the system may take 2-3 cleaning cycles. Typically, it is only necessary to use one cleaning cycle per connector.

Customer Service

Westover Scientific
18421 Bothell-Everett Hwy., Suite 110
Mill Creek, WA 98012

Phone: (800) 304-3202 or (425) 398-1298
Fax: (425) 398-0717
E-mail: info@westoverscientific.com
Web: www.westoverfiber.com

Technical Information

Cleaning cycles: You should expect the following number of cleaning cycles per FULL solvent reservoir, depending upon the type of cleaning tip used:

2.5mm tip:	9,500 cycles
1.25mm tip:	12,500 cycles
Ribbon fiber:	9,500 cycles

Filter change -You should replace the two fine air filters every 100,000 cycles - "Service LED" will indicate need.