

# HST-3000 Job Aid T1 CAS Trunking August 1, 2011



The following procedure outlines how to place and receive calls using CAS Standard E&M signaling on a T1. One HST-3000 handheld services tester is required to complete this test. The HST 3000 must be at firmware revision 7.10.09 or greater and must be equipped with a T1 module and Signaling option.

Menu selections are made from the HST-3000 front panel either by using the keypad to select the option number or by using the arrow keys to scroll to the desired selection and pressing the OK key.

HST-3000 Front Panel:

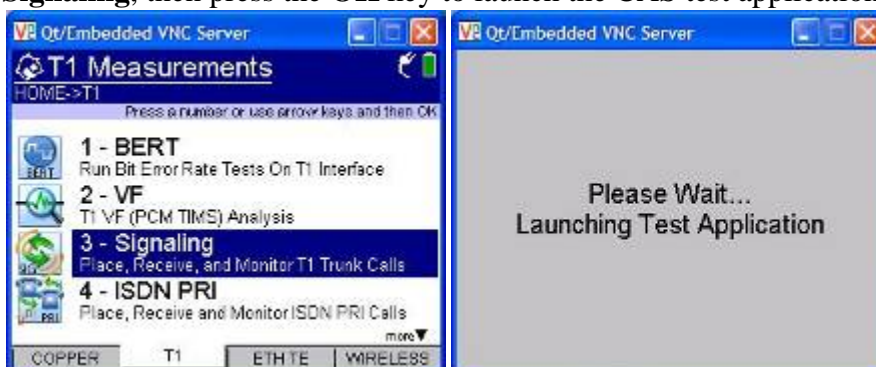


---

**Part 1: Configuring the HST-3000 for T1 CAS**


---

- | Step | Action          | Details  |
|------|-----------------|--|
| 1.   | Install SIM     | Install T1 Module on the HST-3000.   |
| 2.   | Power On        | Press the green Power Key to turn on the HST-3000.   |
| 3.   | Launch Test App | Press the <b>T1</b> Soft key. Press the <b>Up Arrow</b> or <b>Down Arrow</b> key to select <b>Signaling</b> , then press the <b>OK</b> key to launch the CAS test application. |



- |    |                |   |
|----|----------------|---|
| 4. | Configure Test | Press the <b>Configure</b> Navigation key. Configure T1 CAS test setting as follows. Leave all other values at default, unless specified in the Work Order: |
|----|----------------|---|

Menu	Option	Value
DS1	Test Mode	Terminate
	Pri. Input	Terminate
	Sec. Input	Terminate
	Framing	ESF
	Idle Byte	11111111
	Line Coding	B8ZS
	DS0 Channel	1
	LBO Level	0 dB
CALL	Tx Clock	Recovered from Primary
	Trunk Type	Standard E&M
	Address	DTMF
	Respond Mode	Auto
	Call Mode	Originate

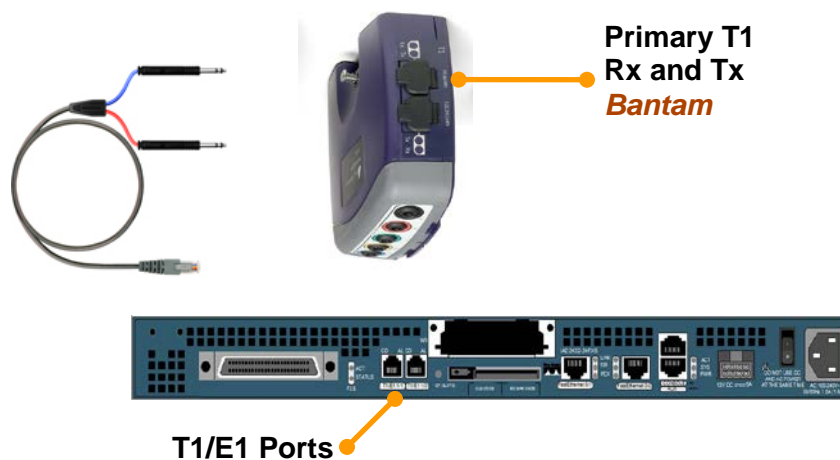
Note: The HST-3000 can accept incoming T1 CAS calls by setting **Call Mode** to "Terminate." However, the correct DS0 Channel for the incoming call must be pre-configured.

---

**Part 2: Connecting to the Circuit**

---

<i>Step</i>	<i>Action</i>	<i>Details</i>
1.	Connect	Connect the HST-3000 to the IAD using the RJ-45 to Dual bantam cable and the primary T1 connectors on the right side of the SIM. Connect the Blue bantam labeled <b>TRANSMIT</b> to the Primary Rx port of the T1 SIM. Connect the Red bantam labeled <b>RECEIVE</b> to the Primary Tx port of the T1 SIM. Connect the RJ-45 cable to the configured T1 port on the IAD.



---

**Part 3: Verifying Connectivity**


---

<i>Step</i>	<i>Action</i>	<i>Details</i>
1.	View Results	Press the <b>Home</b> key to display T1 Signaling Summary Results.
2.	Check LED	A <b>Green</b> Sync LED indicates the HST-3000 has detected the T1 signal.



3.	Restart	Press the <b>Restart</b> soft key to reset counter and alarms. <b>ALL SUMMARY RESULTS OK</b> should be displayed.
----	---------	--



4.	Troubleshoot	<p>If the <b>Sync</b> LED is not green, verify the following:</p> <ul style="list-style-type: none"> <li>• The HST-3000 is configured correctly, as outlined above.</li> <li>• The Port is configured properly and enabled in the IAD.</li> <li>• Cables are good quality and properly connected. (Connect the Blue bantam labeled TRANSMIT to the Primary Rx port of the T1 SIM. Connect the Red bantam labeled RECEIVE to the Primary Tx port of the T1 SIM. Connect the RJ-45 cable to the configured T1 port on the IAD.)</li> </ul>
----	--------------	--

If the Sync LED is still not green, the Local Connectivity test has failed. Contact your Tier II Technical Support.

## Part 4: Performing the Test

- | Step | Action       | Details  |
|------|--------------|--|
| 1.   | Display Call | Press the <b>Right Arrow</b> key or the <b>Display</b> soft key to display Call Results  |
| 2.   | Offhook      | Press the <b>Action</b> soft key and select <b>Send Off Hook</b> . Outbound (UPPER CASE) and inbound (lower case) events are displayed in the <b>Call Results</b> menu. Verify that <b>OFF_HOOK</b> and <b>wink</b> are displayed. |



- |    |           |   |
|----|-----------|---|
| 3. | Dial Call | Using the HST-3000 keypad, dial your Cell Phone number. Answer the incoming call on your Cell Phone. “off_hook” indicates that the call setup was successful. |
|----|-----------|---|



- |    |              |  |
|----|--------------|--|
| 4. | Troubleshoot | <p>If “off_hook” is not displayed, verify the following:</p> <ul style="list-style-type: none"> <li>• The HST-3000 setup is correct, as outlined above.</li> <li>• You have service on your Cell Phone.</li> </ul> <p>Repeat steps 2 and 3. If “off_hook” is still not displayed, the test has failed. Contact your Tier II Technical Support.</p> |
| 5. | Disconnect   | Press the <b>Action</b> soft key and select <b>Send On Hook</b> to disconnect the call.  |