



ONX-CATV Quick Check and Quick Check Expert

Setup and Overview

March 2018

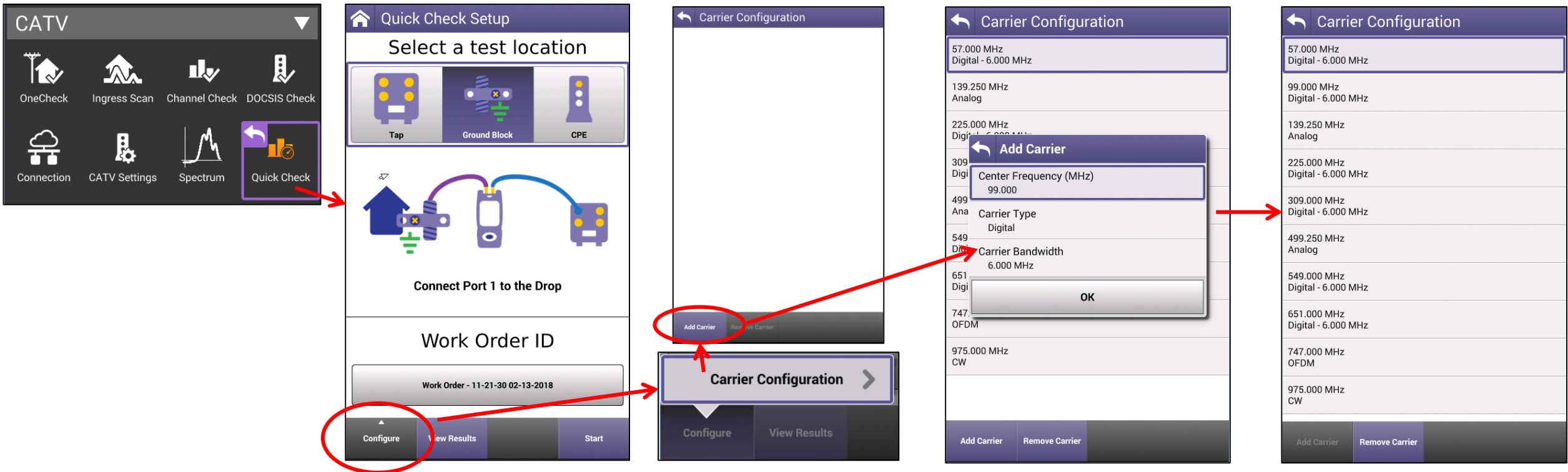


Quick Check Setup

Use **Quick Check** to see up to 10 manually added channels and quickly determine if signal is present

Quick Check updates signal levels quickly so immediate network modifications can be seen

- Initial entry into Quick Check will bring users to the setup screen
- Press the Configure button, then Carrier Configuration to setup individual channels – Up to 10 channels can be added
- After this initial setup is complete Quick Check will save time by going immediately to performing level measurements on the configured channels when entering the mode



- Add/remove frequency and type of carrier

QuickCheck Results

- Press Start, if in the setup screen, to begin taking level measurements on the configured channels
 - Press the back button to go back into the setup screen
- Use the arrow keys to move markers channel to channel to show the measured value
- Tap on the box attached to the top of the marker to change it to a delta marker
 - Delta marker shows the difference in level between two channels (Tilt)

Quick Check Setup

Select a test location

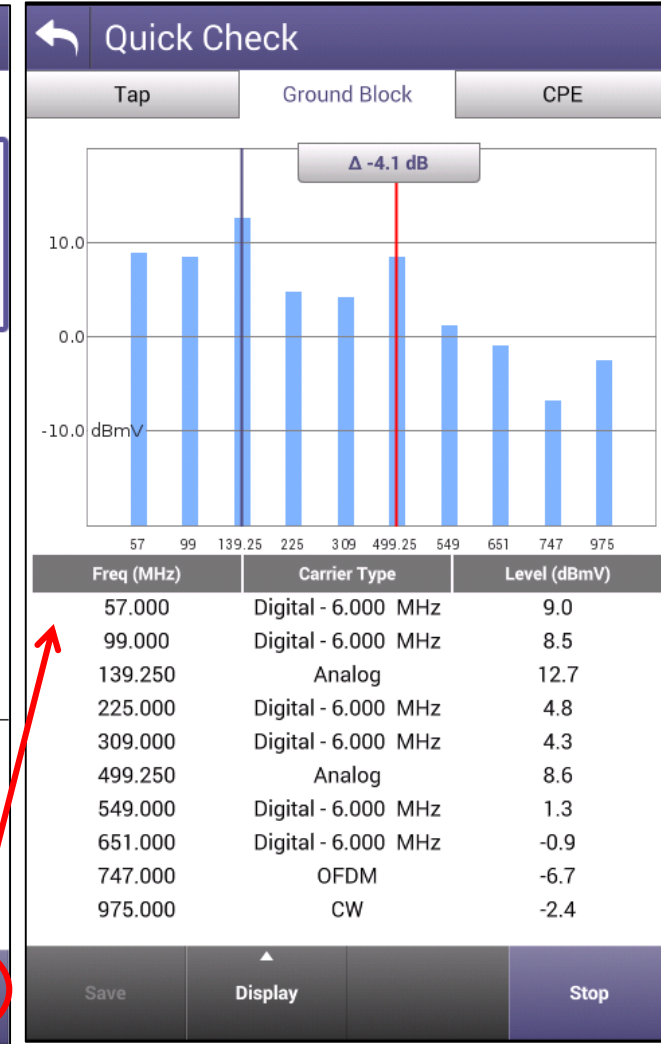
Tap Ground Block CPE

Connect Port 1 to the Drop

Work Order ID

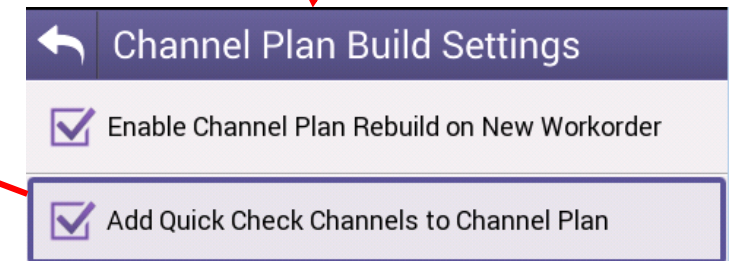
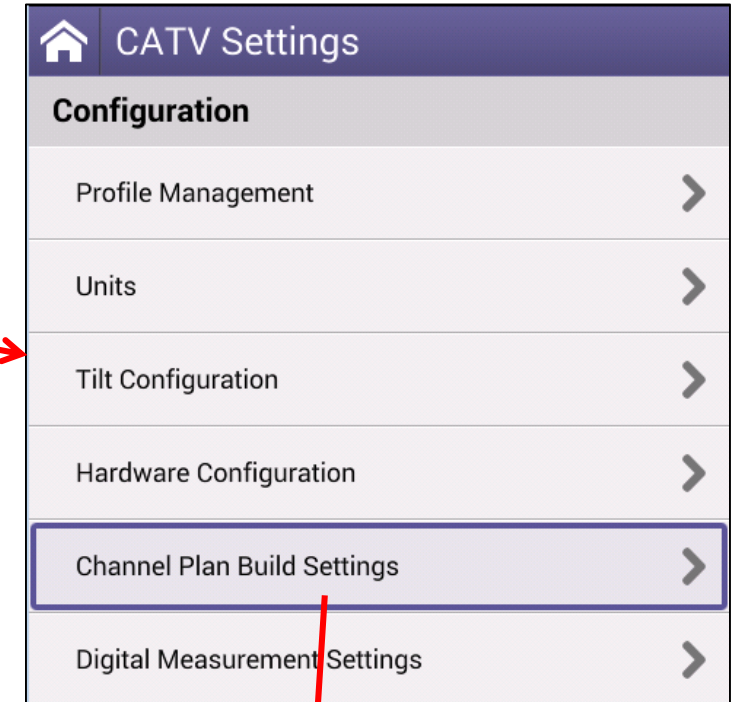
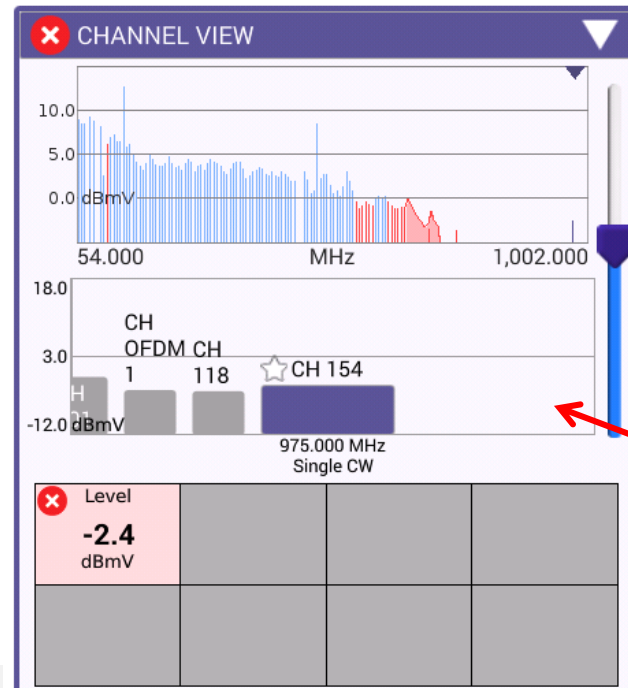
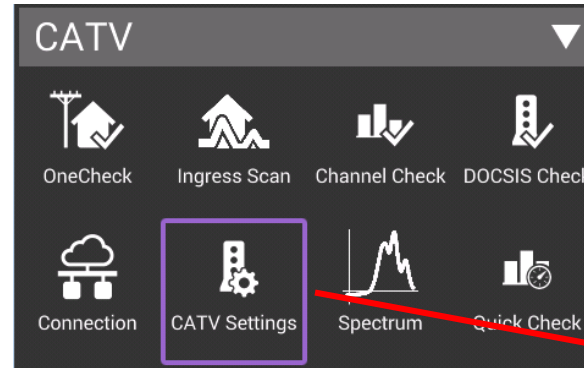
Work Order - 11-21-30 02-13-2018

Configure View Results Start



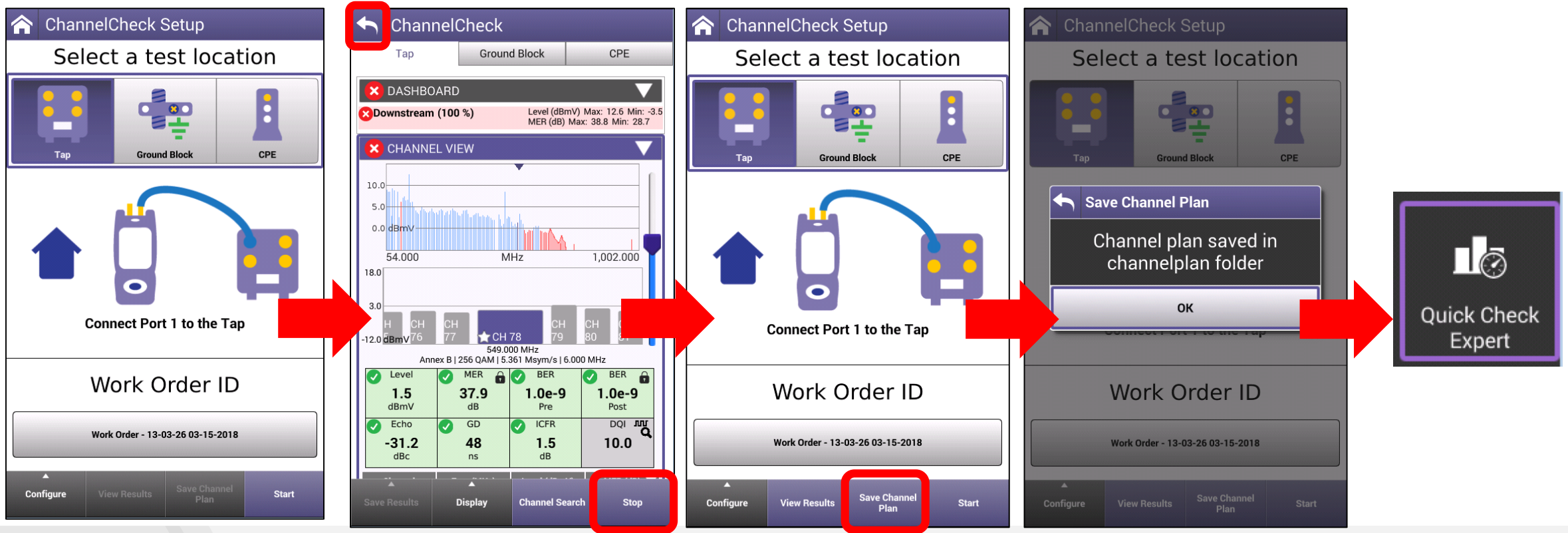
Add CWs to Channel modes

- If a CW is not detected during a ChannelCheck or Channel Expert test, these can be added by configuring the CW in Quick Check first then telling the ONX to use this CW when measuring in the Channel modes
- This setting is in the “CATV Settings” => Channel Plan Build Settings – Check the box to activate this setting
- Now performing Channel mode tests the CW(s) will be added to the channel lineup for testing



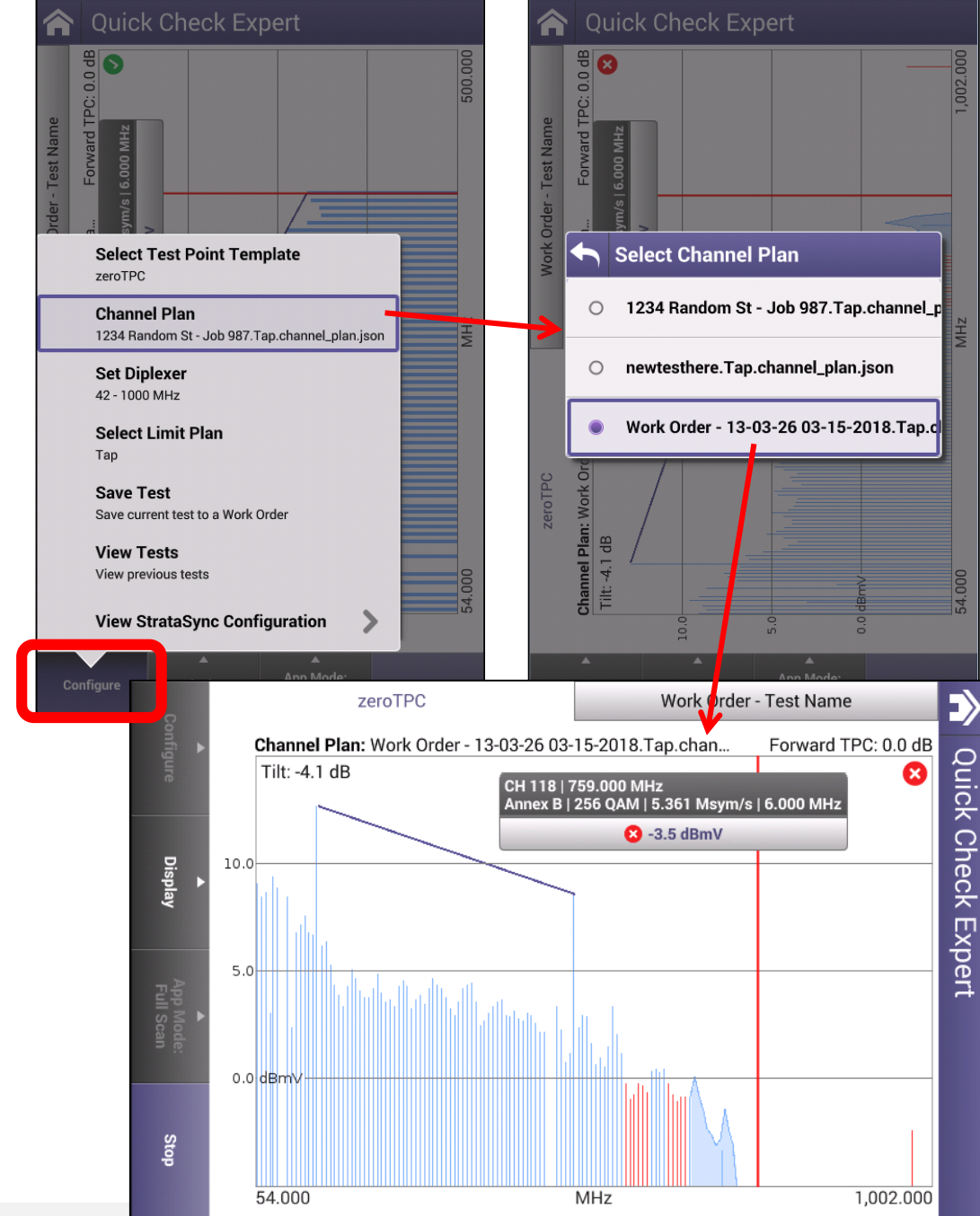
Quick Check Expert Setup

- Channel plans are saved and used from ChannelCheck mode
- Run a ChannelCheck test, when complete stop the test and press the back button
- At ChannelCheck Setup screen press the “Save Channel Plan” button
 - This will automatically name the channel lineup with the Work Order ID
- Enter Quick Check Expert mode to now use this channel lineup



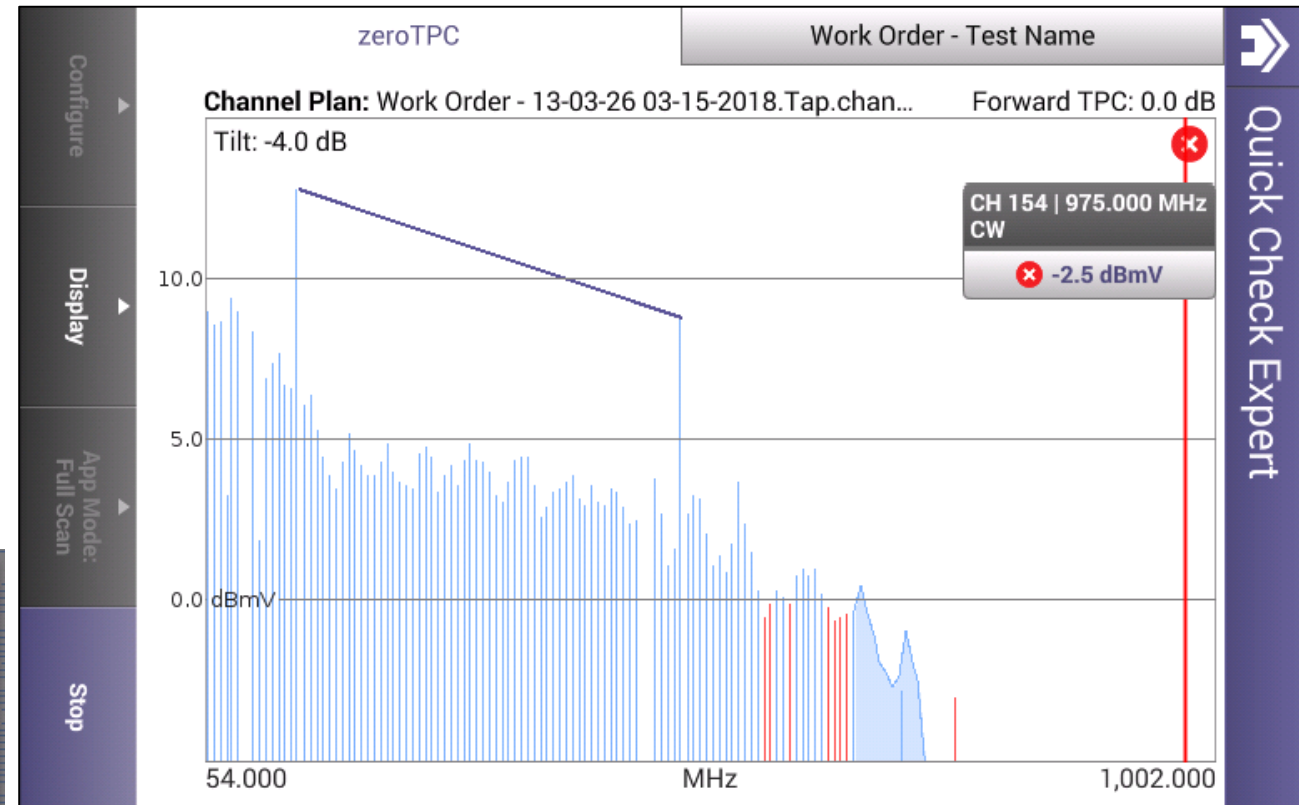
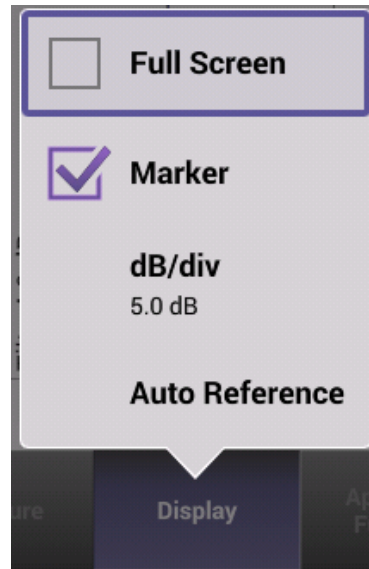
Quick Check Expert Setup Con't

- After the mode has launched, go to Configure (may need to stop the current testing) and enter "Channel Plan"
- Select the channel plan that was just saved as the Work Order ID name
- The test will now be performed using the saved Channel lineup and will be shown in a rotated view to maximize the screen utilization
- Tilt Channels are based on the Tilt Channels set in CATV Settings, but a marker and delta marker can be used to find different channel tilt metrics
- Pass/Fail Level limits are applied

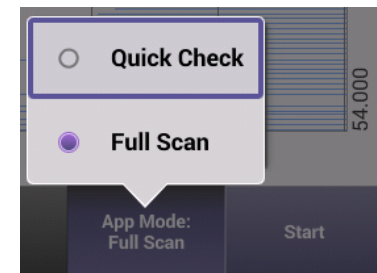


Quick Check Expert

- Shows a Full Scan view of all channel levels and Tilt with movable marker and delta marker
- View can be set for Full Screen (double tap display or select from Display button)
- Adjustable dB/div
 - 1, 2, 5, 10, or 20 dB



Quickly toggle between Quick Check or Full Scan Views





VI.VI