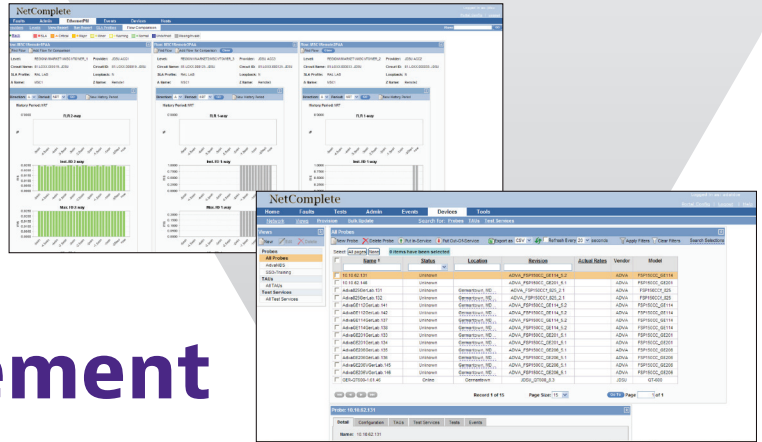




EtherASSURE™ Element Management System (EMS)

For network interface devices including
the JMEP SFProbe®



The EtherASSURE EMS provides highly-scalable capabilities for state-of-the-art PacketPortal® JMEP SFProbes and QT-600 test probes.

EtherASSURE EMS provides the fault, configuration, administration, inventory, performance, and security functions needed to enable a truly effective EMS. Used with the comprehensive suite of EtherASSURE performance monitoring and test and turn-up applications, it enables advanced testing and troubleshooting and provides enhanced monitoring capabilities for service level agreements (SLAs).

The EMS enables remotely configuring, feature licensing, and maintaining QT-600 test probes and JMEP SFProbes. It features a Northbound interface for fault management, and includes circuit import for performance monitoring configuration, enabling easy integration into OSSs to efficiently map into the operator's business practices.

EtherASSURE EMS also provides mediation functions for flexible and scalable deployment models as well as secure communication, synchronization, and PM collection from Viavi Solutions elements.

Key Benefits

- Scalable to control, configure, and manage QT-600 test probes and JMEP SFProbes
- Integrated with the full suite of NetComplete™ performance monitoring (PM) and test and turn-up applications

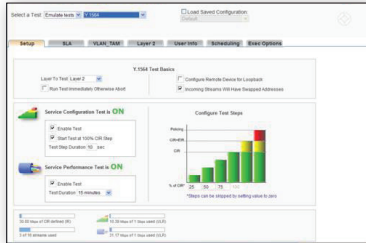
Key Features

- Intuitive web interface lets multiple users remotely access probes
- Client-server architecture manages up to 50,000 elements
- Flexible interfaces for automated device and circuit configuration
- Supports SNMP Northbound interfaces to integrate with other operating support systems (OSS)

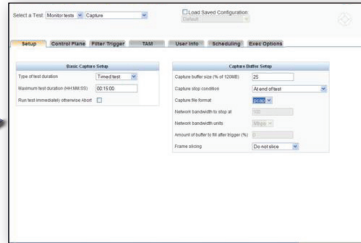
Applications

- Assurance for Ethernet mobile backhaul and business services
- Service activation testing for 3G, 4G, and LTE small cells
- SLA reporting with end-to-end performance monitoring
- Throughput monitoring for network optimization
- Remote test and troubleshooting support

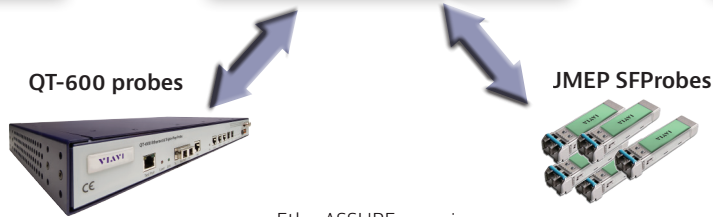
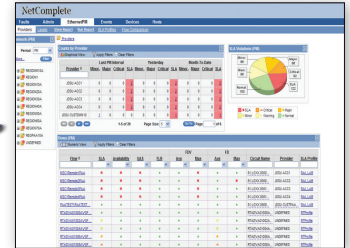
EtherASSURE NetComplete test and turn-up



EtherASSURE EMS



EtherASSURE NetComplete PM



Specifications

Product Supported

JMEEP SFProbes
QT-600-2/10 test probes

General

Intuitive web client
Centralized element
Centralized remote configuration of JMEEP for PM and test parameters
Efficient feature enablement through license management of JMEEP
Circuit import for JMEEP and PM flow configuration
Robust time synchronization support via NTP, 1588v2, PPS
Secure data communication with JMEEP for management and PM collection
Scalable mediation function for efficient deployment
Support geographically diverse deployment of mediation functions for network deployment efficiency

Functionality

Discovery of Viavi network elements
Performance data retrieval
Event and alarm collection and aggregation
Inventory reports
Storage of equipment configuration in a database
Centralized software upgrades
Client-Server architecture
A single EtherASSURE EMS instance can manage different devices in different networks
Supports multiple-user operation using a single server

Security

Customizable user groups with role-to-action mapping
Robust security authentication and authorization
Password security and password change enforcement
Secure communication with the OSS

Protocols

SNMPv2 for integration with third-party OSS
Viavi SOCP for communicating with JMEEP SFProbes

Operating Systems

RedHat® Linux/x86
Solaris 10

Ordering Information

Description	Part Number
EtherASSURE PM OSS 3rd-party endpoint RTU software	NTC-ETH-PM-ENDPOINT
EtherASSURE test OSS application: large license with database software	NTC-ETH-TEST-APP-DB-LG
EtherASSURE performance monitoring application: large RTU with database software	NTC-ETH-PM-APP-DB-LG



Contact Us **+1 844 GO VIAVI**
(+1 844 468 4284)

To reach the Viavi office nearest you,
visit viavisolutions.com/contacts.

© 2015 Viavi Solutions, Inc.
Product specifications and descriptions in this document are subject to change without notice.
ems-ds-sas-nse-ae
30175963 902 0615