

The logo for VIAMI, consisting of the letters 'VIAMI' in a bold, purple, sans-serif font. The background of the slide features a large, abstract graphic of overlapping triangles in shades of blue and purple, with a light grey triangle at the top right.

**VIAMI**

# **Observer Matrix Network Monitoring Switch**

Maximize your monitoring machines



The Observer® Matrix™ network monitoring switch is the perfect device to enhance the power of your monitoring appliances. Designed from the ground-up, Matrix uses a modern HTML5 GUI and the best underlying hardware technology for optimal ease-of-use and performance. Stop compromising simple configurability or giving up on powerful switch features and functionality. With Matrix, quickly leverage all your legacy monitoring tools and get the right data to the right tool in a timely manner.

## Benefits

- The industry's first rule-based interface makes packet manipulation and filtering a breeze
- Drag-and-drop GUI network-tool port connectivity provides the ultimate in flexible traffic flow configuration, visualization, and management
- Cost-effective design means you pay for only those monitoring resources you need while making 24-port expansion simple
- Traffic pre-processing can extend the life of legacy monitoring equipment and dramatically increase tool efficiency
- Transition to 10 G more easily by selectively directing and passing only the most critical traffic

# Extreme Performance. Incredible Usability.

**Smart**  
 Filtering, de-duplication, and packet trimming execute quickly fast. Traffic pre-processing can extend the life of legacy monitoring equipment and increase tool efficiency.

**Specialized**  
 Hardware is exclusively designed to keep up at line rates on fully-saturated 10 G links.



**Scalable**  
 Easily configure up to 24 ports and beyond.

**Intuitive**  
 Modify load-balance settings or replicate traffic with two mouse clicks. An intuitive UI and centralized rules let you change traffic patterns in seconds.

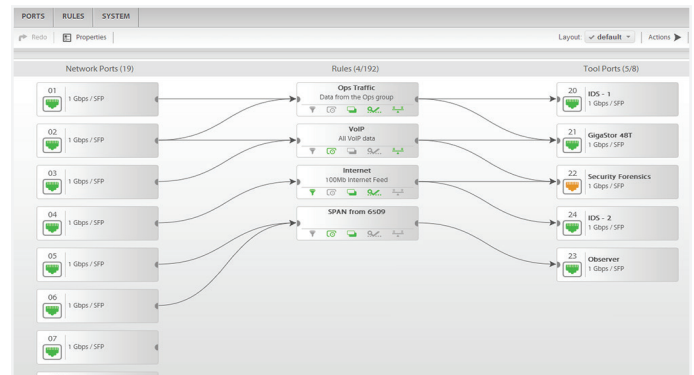
## Key Capabilities

- Flexible port assignments (any port can serve as a network or tool port)
- Perform complex filtering using a GUI and/or BPF language
- Replicate, aggregate, or load balance tool traffic without restriction
- Scale to 24 ports of 1/10 G and beyond
- Choose IEEE-1588 (PTP), GPS, or NTP time stamp options
- RESTful API to monitor and/or manage the Matrix with 3rd-party

## Key Features

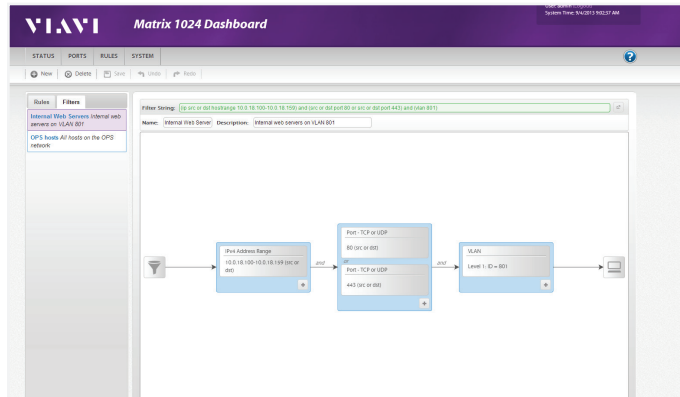
### Ease of Use

Matrix has been designed from the ground up with an entirely new HTML5 interface that makes configuration, programming, and management incredibly easy. Plug-and-play simplicity translates into a total typical setup time of ten minutes. This is all done through a new "rules" based paradigm that integrates traffic flow configuration and management into a single, centralized approach rather than scattered across ingress and egress ports.



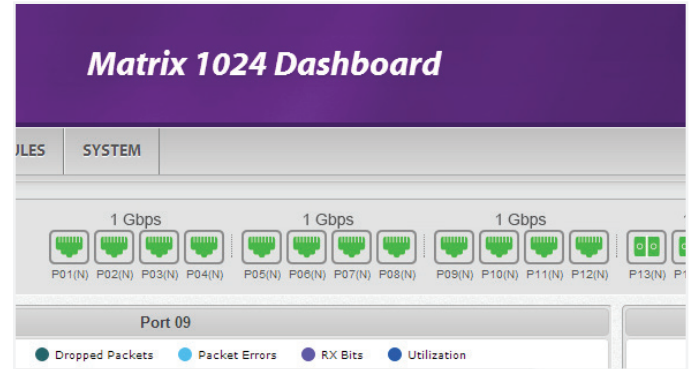
## Comprehensive Functionality

All good network monitoring switches include capabilities like aggregation, load balancing, speed conversion, and traffic replication. Matrix does all this and more. Developed to provide deep packet manipulation, every Matrix includes user configurable de-duplication, packet trimming, multiple time-stamp options, and the most powerful yet simple to use filtering in the market.



## Scalability

Matrix scales to 24 ports per enclosure. What's more, the product fully supports 1/10 G, without restrictions on whether the ports act as network or tool connections. Up to 8 ports can act as tool ports simultaneously.



## Cost Effective

Matrix is completely designed and built by expert Viavi Solutions™ hardware and software development teams. This results in a significant cost advantage compared to competitors. Add-on port license upgrades are also sensibly priced, ensuring your monitoring dollars go further. Pricing is all inclusive.

## 3rd-Party Integration

A RESTful API lets Matrix share information with 3rd-party apps and enables remote management and configuration by higher-level management tools.



Contact Us **+1 844 GO VIAVI**  
(+1 844 468 4284)

To reach the Viavi office nearest you,  
visit [viavisolutions.com/contacts](http://viavisolutions.com/contacts).

© 2015 Viavi Solutions, Inc.  
Product specifications and descriptions in this document are subject to change without notice.  
matrix-br-ec-ae  
30176197 901 0415