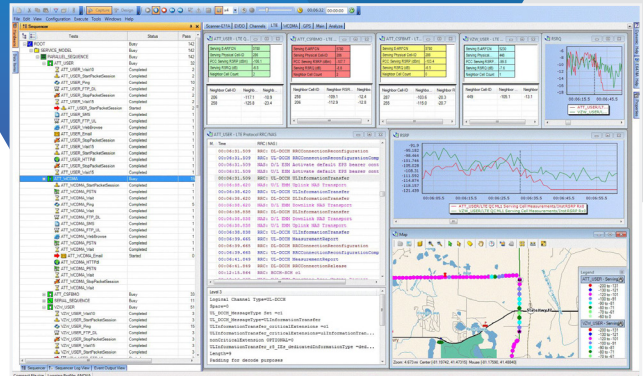


RANAdvisor for Cluster Acceptance Testing



The RANAdvisor network optimization solution makes cell-site-cluster acceptance testing quick and easy with a flexible GUI that helps implement and visualize the most complex data test scenarios. Reliable software, which can cope with six devices and a receiver, minimizes repeat data capture. And, with test coverage for LTE Advanced, VoLTE, and POLQA, RANAdvisor covers all your testing needs in a single, upgradable package.



RANAdvisor E6474A software with W1314 receiver

Benefits

- Drives done right—the first time with a robust and reliable software platform
- Instant feedback on test performance with a visual data test sequencer
- Fast test configurations with auto device detection
- Simplified hardware configurations with on-device VOLTE/POLQA options

Features

- Project templates ensure consistency for data collection across distributed teams
- Covers LTE-A, HSPA, UMTS, GSM, 1xEVDO, CDMA
- Compact file sizes
- On-device POLQA measurements directly on Android UE
- VoLTE measurements on Samsung devices
- Indoor and outdoor measurement capabilities
- Field-rugged receiver with built in GPS
- Visual GUI customizable for users' individual needs
- Simple single project encompasses devices and test sequences
- Supported by all major post-processing platforms

Auto Device Detection — indicates visually that connected devices are detected and ports are configured.

Graphical Test Sequencer — displays current test status and progress throughout the target collection sequence; optimizes test cycles with parallel and serial test sequences.

Device Forcing Functions — locks devices to required frequencies and bands (where supported) to enable control over collected data.

Indoor and Outdoor Navigation — W1314 receivers include a built-in 50-channel GPS for high-accuracy location measurements; indoor waypoint navigation can be used for in-building collections.

Supported on All Major Post-Processing Platforms — log files can be directly imported and processed.

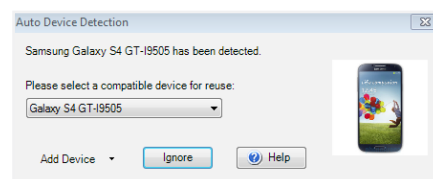
Compact File Size — custom logging profiles enable optimizing collected data for the task in hand.

Portable Backpack Configuration — easy to transport and operate, accommodating up to six phones and a Viavi Solutions® W1314 receiver with full cabling and power options.

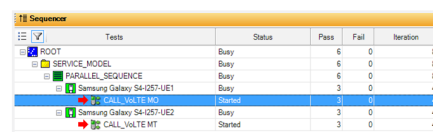
- Supports two batteries with integrated charging harness
- Hot-swap-capable minimizes downtime
- Integral USB hub for cable management
- Long collection time when used with the Viavi W1314 receiver

Typical RANAdvisor Configurations for Cluster Acceptance Testing

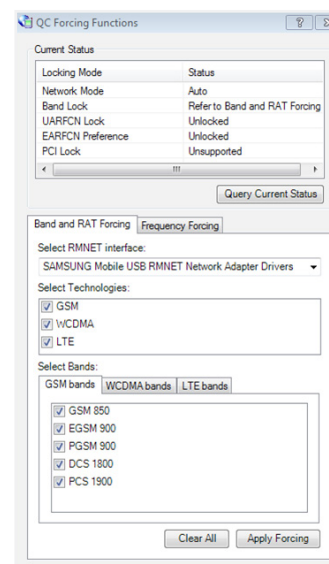
Description	Part Number
W1314B measurement receiver	W1314B-E09
LTE-A Testing — E6474A Network Optimization Software Licenses	
Multiple phone	E6474A-010
MapX mapping	E6474A-040
Receiver measurements	E6474A-050
UMTS UE measurements	E6474A-300
UMTS to HSPA+ upgrade	E6474A-327
LTE UE measurements	E6474A-640
LTE RX measurements	E6474A-645
cdma2000® UE measurements	E6474A-101
cdma2000 1xEV-DO, Rev A upgrade	E6474A-137
1 year drive-test SUS	E6474A-060
VoLTE Upgrades — E6474A Network Optimization Software Licenses	
VoLTE base	E6474A-746
On-device POLQA base	B9990A-210
RANAdvisor Backpack Options	
Backpack with built-in USB hub and charging harness for up to two batteries	E6473B-930
Battery pack containing one battery	E6473B-925



Auto device detection



Graphical test sequencer



Device forcing functions



Please contact your Viavi representative for configuration details or for a product demonstration.



Contact Us **+1 844 GO VIAVI**
(+1 844 468 4284)

To reach the Viavi office nearest you,
visit viavisolutions.com/contacts.

© 2015 Viavi Solutions Inc.
Product specifications and descriptions in this document are subject to change without notice.
ran-cluster-ps-nsd-nse-ae
30176105 900 0615