

# *OFS-355 Download Manager Getting Started*

## Installing and running for Version 2.70 and following

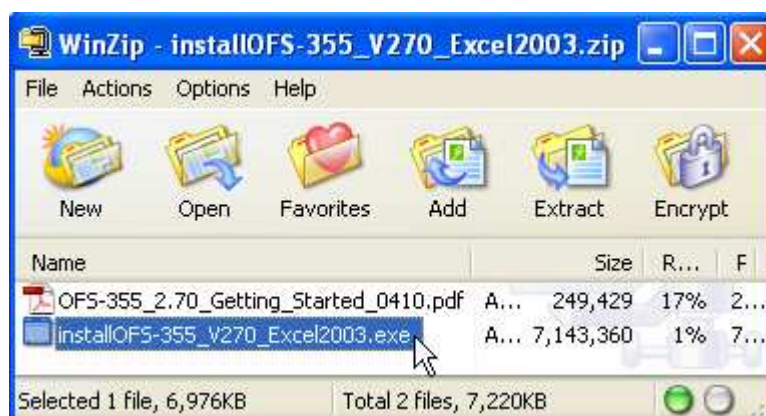
The following procedure outlines how to install and start the OFS-355 Download Manager. Please read the entire procedure **BEFORE** starting.

### 1. System Requirements

- Operating System: Microsoft Windows 7  
Microsoft Windows Vista  
Microsoft Windows XP
- Application: Microsoft Excel 2003 or higher

### 2. Installing the OFS-355Download Manager


- 1 Open the zip file containing the OFS-355 installation software.
- 2 Double click on < installOFS-355\_Vxxx\_Excel200x.exe>. You will be guided through the installation process.




#### Note:

- You need administrator privileges to install the OFS-355 software on your computer.
- The installer will first remove any older version of OFS-355 if you accept when prompt.  
The installation process will then have to be invoked a second time.

### 3. Connecting the instrument

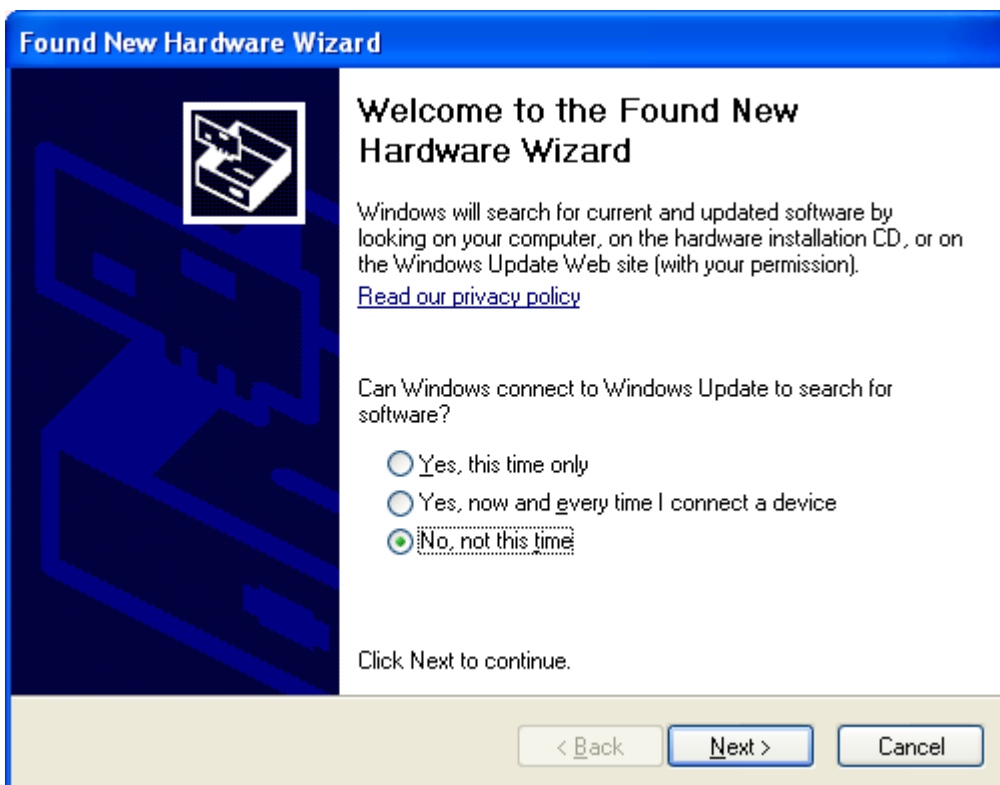
- 1 Use a proper USB cable to connect the JDSU SmartClass, SmartPocket or C-series device to any one of your computer's USB ports.
- 2 Turn your device ON.   
**Note:** The USB connect provides DC power to the device.

 **Do NOT close** the “Found New Hardware” info box provided by MS Windows. Please wait for the “Installation completed” message.

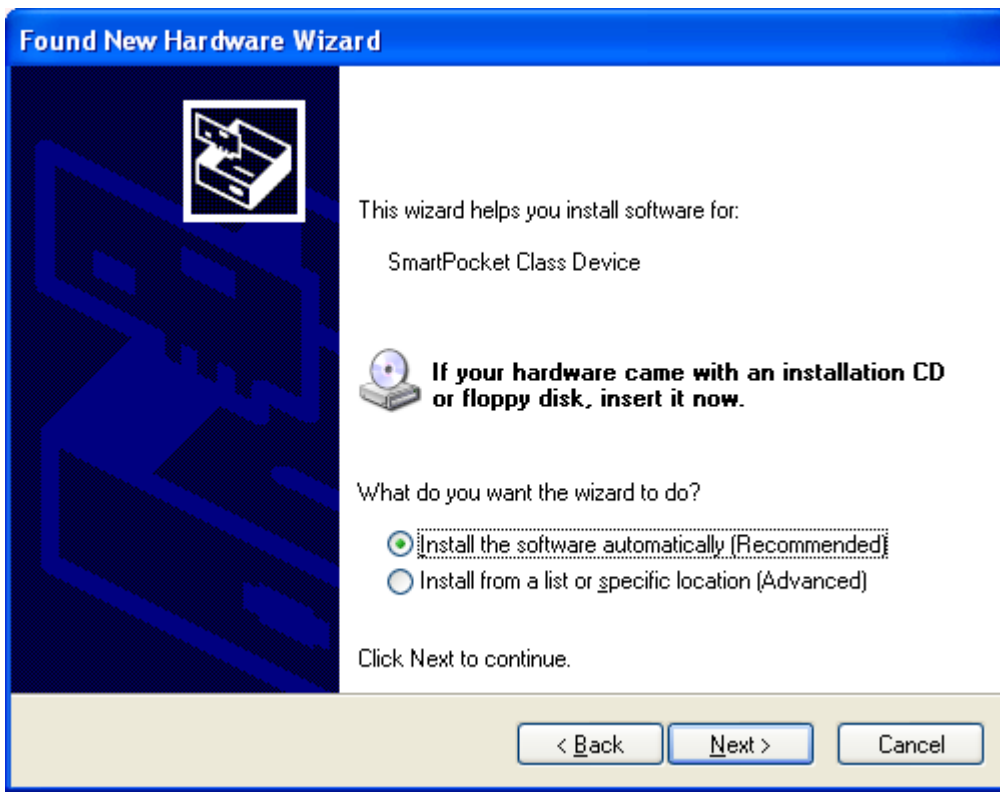
### 4. Installing the USB Serial Ports Driver:

- 1 Depending on your configuration the “Found New Hardware Wizard” might pop up.

Select the option “No, not this time”. Then click “Next”



2. Select the option “Install the software automatically”. Then click “Next”.



3. Wait until the “USB Serial Ports Driver (JDSU)” has been found.

**Note:** JDSU did not book for Microsoft Windows Logo testing for the SmartClass but only for the new SmartPocket, so we recommend overriding the “Hardware Installation” warning. Just press “Continue Anyway”.



## 5. Prepare Excel for “Running OFS-355 Makros”


### Excel 2003:

1. Macros have to be enabled in Microsoft Excel 2003 to actually download any measurement data.  
The macro security level has to be set as explained below.

1. Click **Tools** Menu, then **Macro**, then **Security...**
2. Set the Security Level to **Low** (not recommended) or to **Medium**.
3. Click **OK**.

### Excel 2007:

1. Due to a new Microsoft macro policy in Excel 2007, a few more settings are required prior to the first use of the OFS-355.  
Open Excel 2007 with an empty worksheet and edit the MS Office Trust Center as explained below:


1. Click the **Microsoft Office Button** , and then click **Excel Options**.
2. Click **Trust Center**, click **Trust Center Settings**, and then click **Trusted Locations**.
3. Click **Add new location**.
4. In the **Path** box, click **Browse** to locate the OFS-355 installation folder (Default: C:\Programfiles\JDSU\OFS-355).
5. Click **OK**.

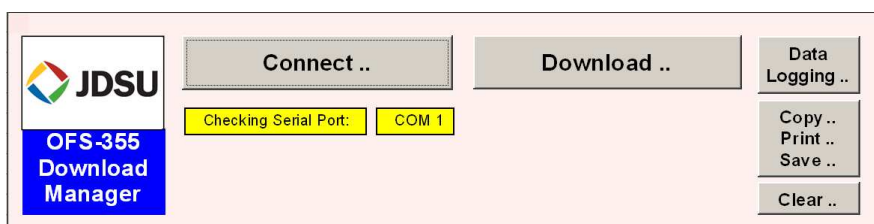
## 6. Running the OFS-355 Download Manager

1. To start the software:
- Use the “OFS-355” icon on your desktop or in the start menu.
- or
- Browse “Start → Programs → JDSU → SmartPocketClass OFS-355 → SmartPocketClass OFS-355 Version 2.70”.

2. On the software, Click on the  button to establish and verify the USB connection.

3. Select the device type (SmartClass/SmartPocket/C-Series) you want to connect.

4. Click on the  button to start downloading the measurement data from your JDSU device to the PC.



For further information see the “OFS-355 Manual”  
(Download any new version of OFS-355 software for free on [www.JDSU.com](http://www.JDSU.com))