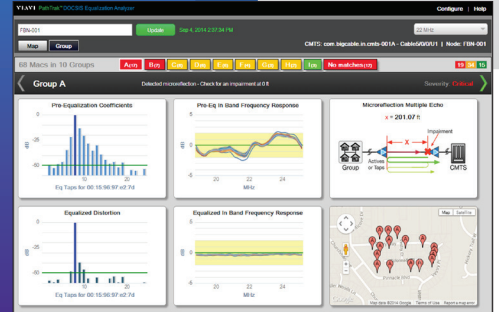




PathTrak™ PNM

Solve your toughest upstream problems in minutes instead of hours—right from your desk!



With PathTrak, you see all impairment types with the industry's most comprehensive coverage. PathTrak lets you:

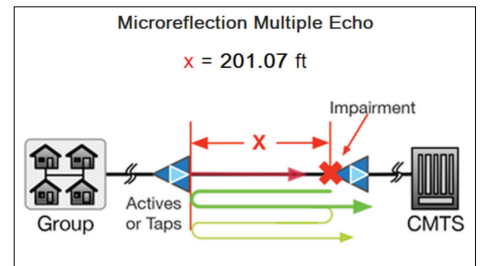
- Pinpoint impairments within a few feet
- Improve first-time fix rates
- Retain customers with proactive maintenance practices
- Leverage proven CableLabs™ PNM technology integrated with industry-leading PathTrak
- Harden your plant for DOCSIS 3.1 rollouts

Leveraging pre-equalization (pre-eq) data from cable modems spread across your plant, PathTrak detects and localizes plant weaknesses within a few feet—often before a technician even gets into their truck!

While pre-eq routines can compensate for plant weaknesses, they mask impairments until they degrade, reach the digital cliff, and abruptly impact service. Pre-eq analysis lets operators regain full visibility of these plant weaknesses and proactively address the ones that require the greatest compensation before they impact subscribers.

These unique capabilities, along with integrated PNM, are why industry-leading PathTrak is the trusted, go-to tool for all upstream issues.

For more information about PathTrak with PNM and related products, solutions, and options, visit www.viavisolutions.com/hfc or contact your Viavi representative.



Contact Us **+1 844 GO VIAVI**
(+1 844 468 4284)

To reach the Viavi office nearest you, visit viavisolutions.com/contacts.

© 2015 Viavi Solutions Inc.
Product specifications and descriptions in this document are subject to change without notice.
pathtrakpnm-ps-cab-nse-ae
30175972 900 0914