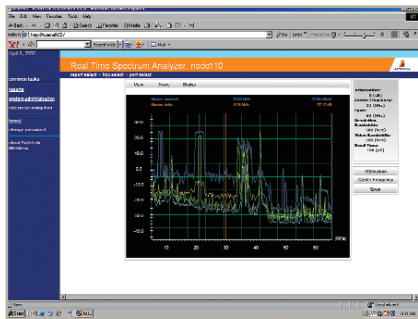


PathTrak™ WebView Software



Key Benefits

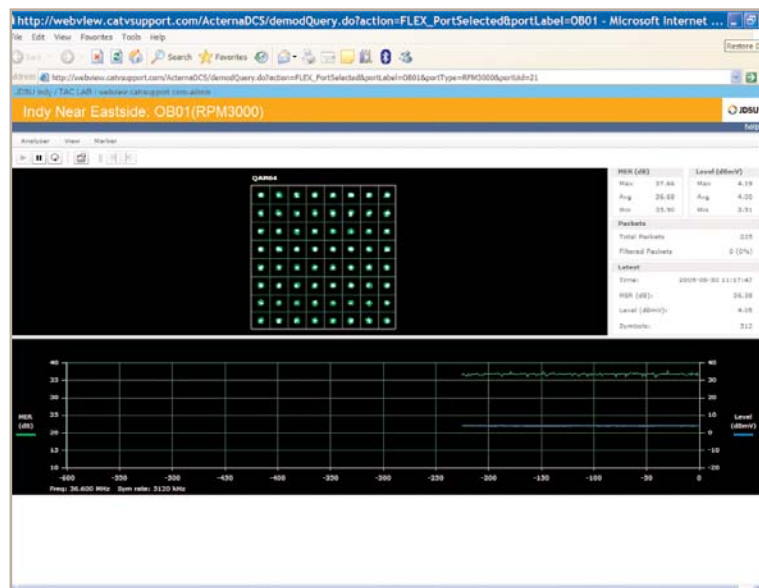
- Automates node certification and node ranking to prioritize field maintenance of “top offenders”
- Facilitates handoff of problems between the plant and the NOC through easier data access
- Stores data in an open format to facilitate custom reports and integration with other systems
- Reduces IT maintenance and deployment by using Internet-based server software
- Provides easy access to the live return spectrum or QAMTrak analyzer from virtually any PC via Internet Explorer to reduce the mean time to understand (MTTU) and mean time to repair (MTTR)

Web-based QAMTrak Analyzer

Key Features

- Provides automated daily reports including node certification reports for prioritization and planning of field maintenance
- Allows unlimited users vs. a maximum of 30 simultaneous PathTrak Clients
- Demodulates live packets in a bursty upstream using QAMTrak™ analyzer via the web without requiring installation of a local PathTrak client
- Provides individual remote spectrum users with full control of measurement parameters and access to Carrier-to-Composite Noise and Zero Span features
- Provides HCU grouping for assigning viewer access privileges; can be segmented on a user-by-user basis
- Offers searches by name for Node (RPM port)
- Manages nodes in broadcast for remote viewing of headend spectrum on DSAM meters with FieldView option

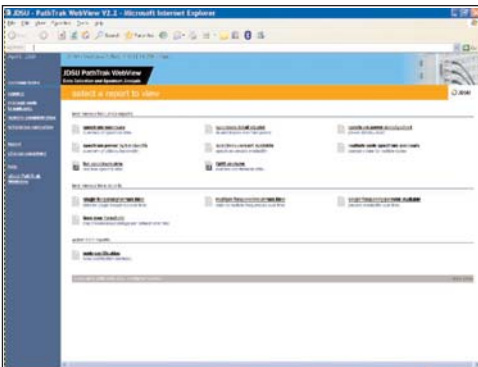
Increase your PathTrak investment value. Provide more personnel with Web-based access to node certification reports, live spectrum, and detailed upstream performance history reports. Increase your triple-play customers' satisfaction and your workforce efficiency by proactively certifying and monitoring return paths.



PathTrak WebView

JDSU understands the challenges associated with increasing work efficiency in order to deploy advanced DOCSIS® 3.0 services faster, while maintaining network security. Our PathTrak WebView software addresses this issue by allowing remote access to the most used troubleshooting tool, the live spectrum analyzer, and to beneficial reports based upon performance history data via the Internet. WebView server software automatically evaluates up to 24 hours of data on all nodes and ranks their performance, letting operators prioritize their work-force more efficiently. PathTrak WebView gives operators the option to allow web-based access to live spectrum and QAMTrak analyzer sessions as well as report generation from outside of the corporate LAN. Other WebView features include:

- Offers password-protected entry from Internet Explorer browser
- Allows customers to choose whether to place the server behind the firewall
- Use WebView software with virtual private network (VPN)
- Open MySQL Database provides remote access to PathTrak Node Certification Reports and Performance History data to share measurement information with reporting and analysis tools
- Interfaces with JDSU NetComplete™ Performance Monitoring and Capacity Management software and third-party operation support system (OSS) software



Provides multiple standard reports for faster troubleshooting and preventative maintenance planning

failed nodes report

Report Start Time 03/18/2008 06:00

Node	HCU	% Time Over Threshold
MS2A	Mayberry 1 (Full)	75.92%
MS2B	Mayberry 1 (Full)	61.99%
SP1A	Springfield 1	27.46%
WS2Z	Woodside 1	25.77%
MT2Z	Michelle	22.99%
G159B	Gotham	22.61%
CE1A	Springfield 2	19.95%
BE1A	Mayberry 2 (H)	18.72%
BT2Z	Michelle	17.31%
H304B	Hilside	12.60%
GV15V2	Greenville	12.33%
SP1B	Jackson	11.33%

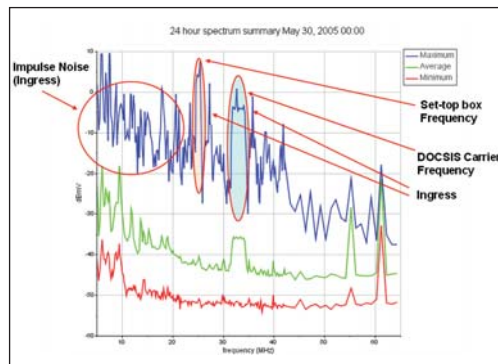
WebView server software automatically ranks node RF upstream performance based on quantitative test data gathered by PathTrak

15 minute time summary

24 Hour Node Cert Time Summary for Node - W47

Time	Pass/Fail (Signal %)
May 01, 00:00	Failed 02.0%
May 01, 00:15	Failed 03.0%
May 01, 00:30	Failed 02.0%
May 01, 00:45	Failed 02.0%
May 01, 01:00	Failed 03.0%
May 01, 01:15	Failed 02.0%
May 01, 01:30	Failed 02.0%
May 01, 01:45	Failed 02.0%
May 01, 02:00	Failed 02.0%
May 01, 02:15	Failed 02.0%
May 01, 02:30	Failed 02.0%
May 01, 02:45	Failed 02.0%
May 01, 03:00	Failed 02.0%
May 01, 03:15	Failed 02.0%
May 01, 03:30	Failed 02.0%
May 01, 03:45	Failed 02.0%
May 01, 04:00	Failed 02.0%

The time-over-threshold report displays the percentage of time a frequency exceeds the selected Threshold T1-4 for a particular time window. It is used to measure carrier performance based on the percentage of time it remains in alarm state.



Easily drills down to summary of peak hold, average, and minimum hold trace in each of the 15-minute increments

Specifications

Reports

Report functionality relies on the PathTrak monitoring plan, which specifies the frequencies used to collect data and the thresholds used to compare data.

Node Certification report

Displays a ranking of the node's RF performance based on PathTrak alarm threshold and performance history data. Node ranking/prioritization is based on a percentage of time over an adjustable PathTrak threshold (RF levels) during multiple 15-minute intervals. Configure reports to automatically calculate and update Pass/Fail results from 1 to 24 hours. Administrator defines the start hour as well as the test duration for certification (i.e., 1, 2, 4, 8, 12, 16, or 24 hours). Includes trend indicators to show whether the node's performance is improving, and provides a summary to help determine overall node health.

Spectrum Summary report

Displays maximum, average, and/or minimum traces of the spectrum analyzer view for the time selected. Most commonly used to monitor averages over a given time period. Compares summaries over time to monitor performance changes.

Spectrum Detail X/Y Plot report

Displays the 15-minute spectrum analyzer traces (maximum, minimum, or average) in the selected time window, showing each 15-minute measurement as a separate colored line on the graph. Most commonly used to search for "outliers," data sets not matching the general pattern.

Spectrum Power Density Chart report

Displays time versus frequency and the power level of each frequency for the selected time window. Unlike the Spectrum Detail X/Y Plot report, the Spectrum Power Density Chart report displays power level information as different sequential colors while displaying time and frequency information. Shows time versus frequency versus level (3-D information) in 2-D format providing a visual picture of performance changes.

Spectrum Power by Bandwidth report

Displays the integrated power of 2 or 4 MHz for each frequency over the entire return spectrum. Useful in measuring the level of power transmitted in each section of the spectrum for carrier placement planning purposes.

Spectrum Percent Available report

Displays the percentage of time that each specified frequency remains within the selected threshold for the selected time window. Useful in measuring carrier performance, as represented by the percentage of time that it is not in an alarm state.

Multiple Node Spectrum Summary report

Displays the Spectrum Summary Report for up to 16 nodes selected by the user simultaneously. Most commonly used to compare the performance of multiple nodes connected to a single CMTS port in order to isolate the node causing the CMTS problem.

Single Frequency versus Time report

Displays the power level of a user-defined frequency for each 15-minute spectrum dataset in the selected time window. Useful in monitoring the performance of a particular frequency, for instance, to locate a carrier over time.

Multiple Frequencies versus Time report

Displays the power level of up to 16 user-defined frequencies for each 15-minute spectrum dataset in the selected time window. Useful in monitoring the performance of a set of particular frequencies, such as noise or carriers over time.

Single Frequency Percent Available report

Displays the percentage of time that a single user-defined frequency remains within the selected threshold for the selected time window. Useful in measuring carrier performance, as represented by the percentage of time that it is not in an alarm state.

Time-Over-Threshold report

Displays the percentage of time a frequency exceeds the selected Threshold T1-4 for a particular time window. Used to measure carrier performance based on the percentage of time it remains in alarm state.

PC Requirements of PathTrak WebView Software

PC not included. The WebView server software can co-exist on the same PC running the PathTrak server software, as long as it meets the minimum PC requirements. WebView server software can also be installed on a separate PC from the PathTrak Server. WebView server software cannot be installed on the same PC as the Test Productivity Pack/FDM server software, but it can co-exist on the same PC running the PathTrak and TPP Client software.

Minimum PC Requirements

- Pentium® 4, 2 GHz CPU with 2 GB RAM
- Dual Processors are recommended for server PCs running both PathTrak server and WebView server software

Pentium® is a registered trademark of Intel Corporation.

Hard Drive Requirements

The amount of data to be collected determines the necessary size for the hard drive. Each RPM card requires approximately 5.6 MB of storage space for each day's collection of 15-minute intervals. Multiplying 5.6 MB by the number of days that the data will be stored (purge interval) gives an approximation of the hard drive size requirement. The default storage options require 174 MB per RPM card.

For example:

- A 31-day purge interval (default setting) with 1 fully loaded HCU1500 (15 cards) requires 2.6 GB of hard drive space:
- 15 cards x 5.6 MB x 31 days = 2,604,000,000 or 2.6 GB.

Operating System Requirements for the Server

Microsoft® Windows® XP SP1 or higher

Microsoft Windows 2003 Server – English language

Microsoft Vista Business Server (32 bit OS)

Microsoft®, Windows®, and Vista® are registered trademarks of Microsoft Corporation.

PathTrak Server Requirements

The PathTrak server must be V2.3 or higher. One PathTrak WebView server is required per PathTrak server. The latest PathTrak service pack software can be found at <http://catvsupport.com>.

Web Client Requirements

The PC from which the PathTrak WebView server is accessed.

Browser Support:

- Microsoft Internet Explorer V6.0 or higher

Graphic Support

For displaying live spectrum:

- Download Adobe® Flash Player at <http://get.adobe.com/flashplayer>

Adobe® is a registered trademark of Adobe Systems Incorporated.

Network Port Requirements

The default communication port between the PathTrak WebView server and the Web Client is port 8080 (Web HTTP port). It is user editable to another port, if needed (e.g., another Web application running on the same PC). Contact JDSU Technical Assistance Center for further information.

Ordering Information

Part Number	Description
1010-00-0914	PathTrak WebView Server Software

JDSU On-site Optimization Service for PathTrak Monitoring Systems

Get the most out of your PathTrak investment – Optimization services are even more critical for node certification reports PathTrak system and threshold must be configured properly in order to generate accurate node certification reports. The JDSU on-site PathTrak Optimization Service allows you to tap into the full potential of your PathTrak reverse path performance monitoring system. Partner with JDSU PathTrak experts to get the most out of your PathTrak investment.

- Refine your PathTrak configuration for optimum performance
- Receive System Administration refresher training
- Receive comprehensive in-depth PathTrak system training
- Leverage the JDSU OEM System/Installation Knowledge
- Benefits from firmware upgrades and engineering change notices
- Receive in-depth Preventative Maintenance, Troubleshooting, and Repair training
- Re-certify your system installation and configuration
- Utilize your customized support agreement

Test & Measurement Regional Sales

NORTH AMERICA TOLL FREE: 1 866 228 3762 FAX: +1 301 353 9216	LATIN AMERICA TEL: +1 954 688 5660 FAX: +1 954 345 4668	ASIA PACIFIC TEL: +852 2892 0990 FAX: +852 2892 0770	EMEA TEL: +49 7121 86 2222 FAX: +49 7121 86 1222	www.jdsu.com/test
---	--	---	---	--