

## Quick Card

# FiberChek Probe Fiber Microscope Syncing to StrataSync™ using FiberChekPRO PC software

This quick card describes how to synchronize the FiberChek Probe Fiber Microscope to the StrataSync cloud-based Asset Management System using VIAVI FiberChekPRO™ software.

### Equipment Requirements:

- FiberChek Probe Fiber Inspection Microscope
- Personal Computer (PC) or Laptop
- FiberChekPRO Software version 2.1 or greater (download at <http://fcpro.updatemyunit.net/>)
- USB to Mini USB cable

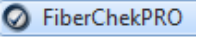


Figure 1: Equipment Requirements

### The following information is required to complete the procedure:

- StrataSync Username
- StrataSync Password

### Firmware Update Instructions:

1. Connect the FiberChek Probe Mini USB Connector to a USB port on your laptop or PC using a USB to Mini USB cable.
2. Click the **FiberChekPRO** icon  in the Windows® Start menu on your PC or laptop to launch FiberChekPRO.
3. The **FiberChekPRO** software will identify the connected FiberChek device. If new firmware is available, a window will be displayed with instructions to perform the update. Press the **OK** button.

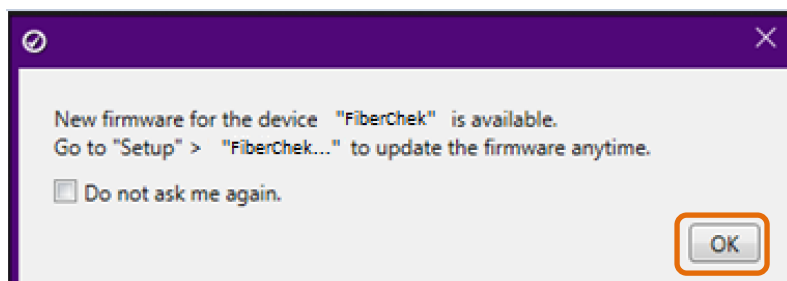


Figure 2: New firmware prompt.

4. Test at least one fiber and save the report to your hard drive.

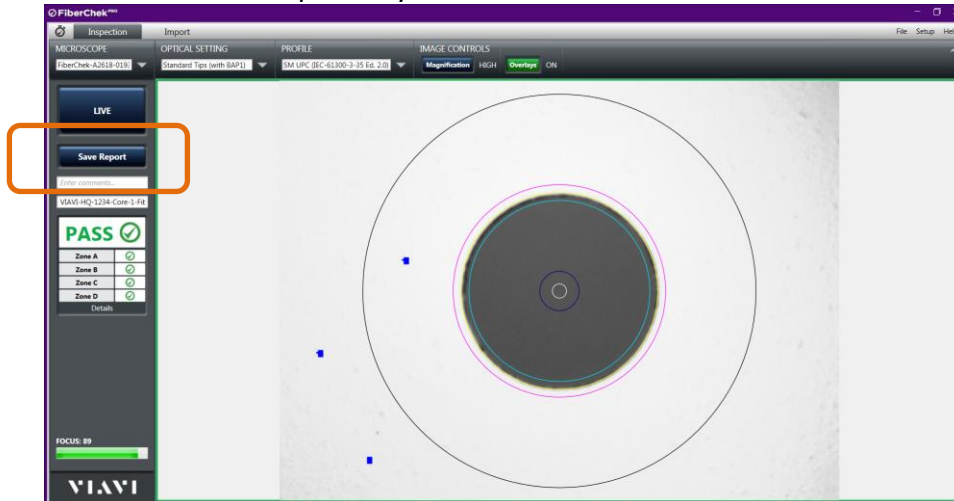


Figure 3: Save Report

5. Click the "Setup" option in the upper right corner of the screen and select the first option, FiberChekPRO Setup...

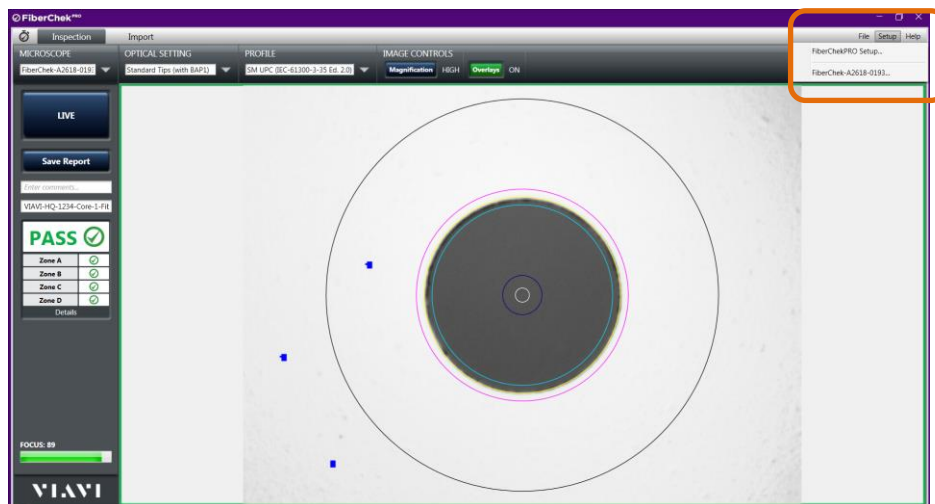


Figure 4: FiberChekPRO Setup menu

6. The **FBP-FiberChek Setup** screen will be displayed. Select the **StrataSync** category from the setup menu and click on the "Log in" button.

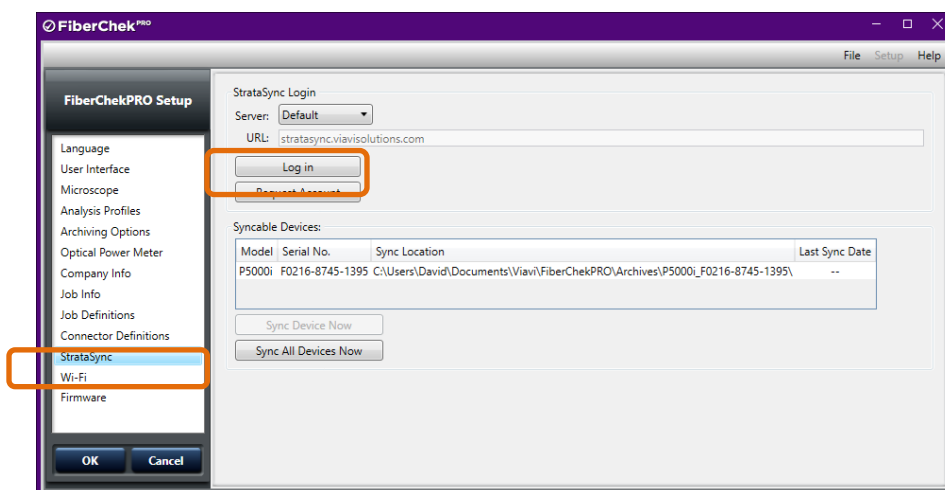


Figure 5: FiberChekPRO Setup

7. Enter your **Username** and **Password** and click on the **“Sign In”** button to Sign In to StrataSync.

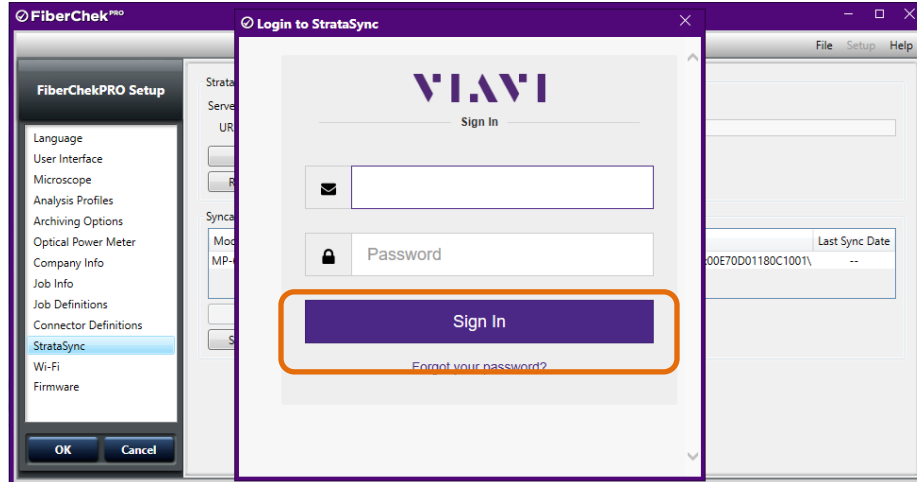


Figure 6: Sign In

8. Click on the **“Sync All Devices Now”** button to upload the test reports to Stratasync.

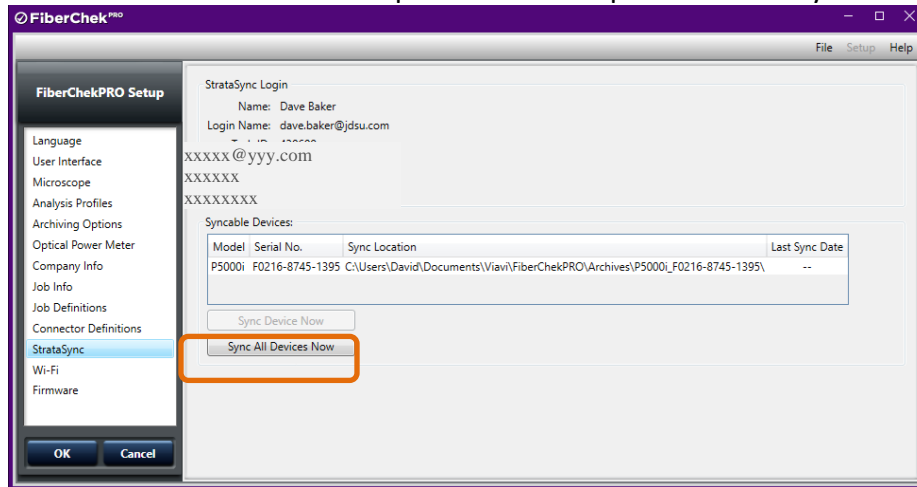


Figure 7: Sync All Devices Now.

9. Click **OK** to acknowledge the Sync.

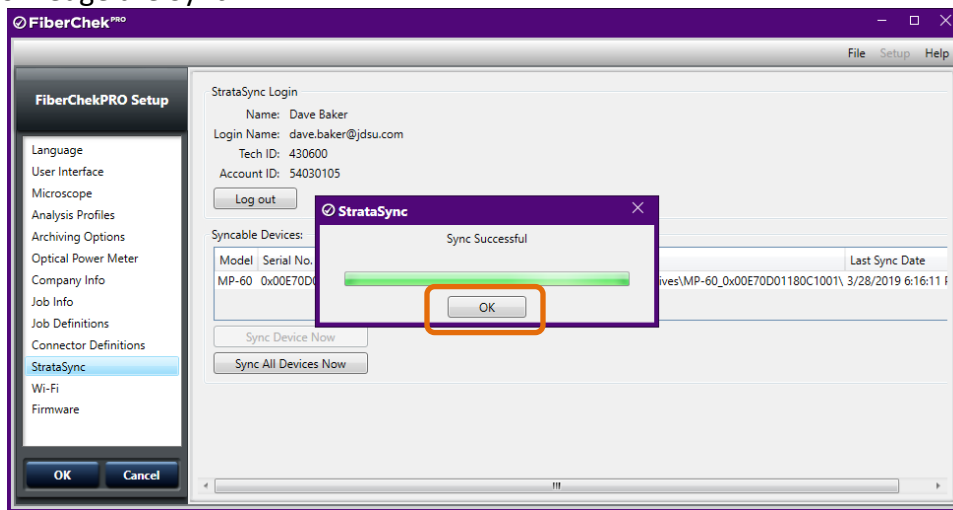


Figure 8: Sync Successful