

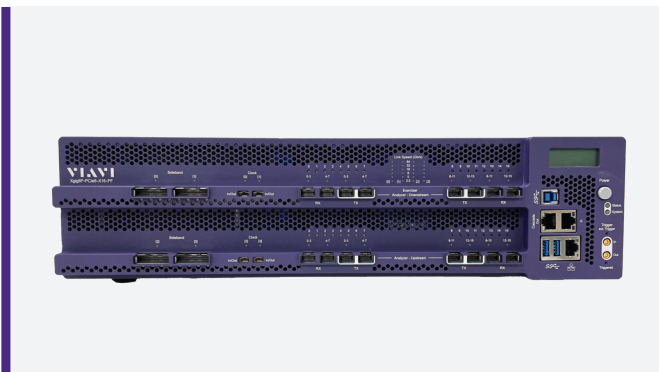
Integrated Protocol Analysis Platforms

Compute, Storage and Transport Line Overview



POWERFUL AND VERSATILE PCI EXPRESS® TESTING SOLUTIONS

With each generation of PCIe, speed and bandwidth have doubled, making the testing process more difficult as data capture, storage and visualization processes grow in complexity. PCIe 6.0 presents increased challenges with PAM-4 signaling, FLIT mode and protocol complications that need to be tested and validated. These challenges are addressed by protocol analyzers and exercisers that go beyond the capabilities of physical layer tools - and work at the link and transport layers of the protocol stack. VIAVI specializes in configuration and protocol testing/analysis and has introduced some of the most advanced and functional platforms in the industry. Our components are backward-compatible, flexible, cost effective, easy to operate, and accelerate set-up time, testing time and promote speed to market.



PCIe®/CXL®/NVMe® Analyzers/Exercisers/Jammers



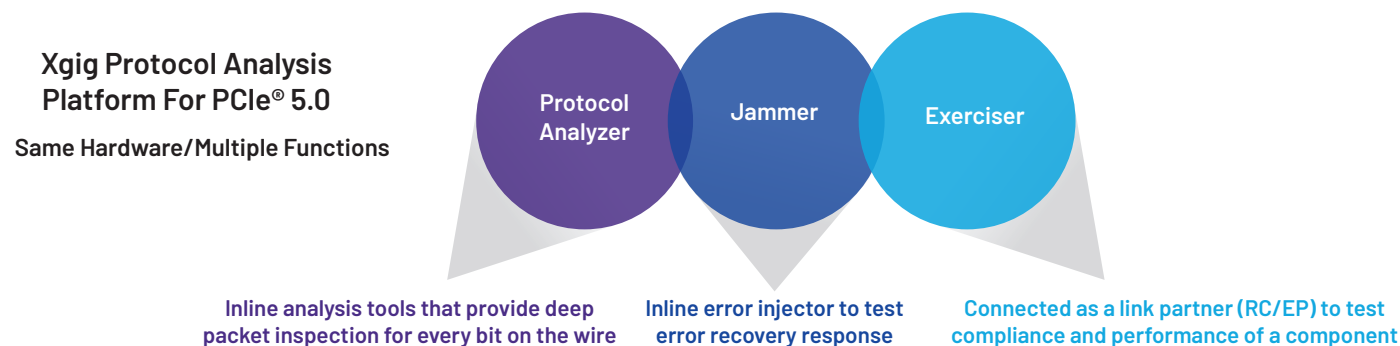
Scan to learn more

Xgig® Product Matrix

Chassis	PCle4	PCle5	PCle6
4K4 Analyzer	•		
4K16 Analyzer/Jammer	•		
5P8/5P16 - Analyzer/Exerciser/Jammer		•	
5P16 Analyzer + PCle6 Interposer			•
6P4-E - Exerciser			•
6P16-AE - Analyzer/Exerciser			•
Interposers	PCle4	PCle5	PCle6
Exerciser Host Test Stand		•	• CEM • EDSFF
Exerciser Endpoint Test Card			• CEM EDSFF Planned
CEM	•	•	• Analyzer Function
CEM U.2	•		
E1 EDSFF	•	•	• Analyzer/Exerciser
E3 EDSFF		•	• Analyzer/Exerciser
U.2	•	•	
U.3	•	•	
M.2	•	•	
Oculink/Slimline	•		
Slimline		•	
SFF-8674	•		
Flying Lead	•	•	
OCP3		•	• Analyzer
CDFP (CoprLink™ - external)		•	
MCIO (CoprLink™ - internal)		•	Planned
UAM (PCle6 trace capture on 5P16)			•

New PCIe 6.0 Analysis Platform

The new VIAVI PCIe 6.0 analysis platform will include Analyzers, Exercisers, and Interposers along with an option that enables 64 GT/s PCIe 6.0 trace capture on existing Xgig PCIe 5.0 equipment to extend equipment investments through the early PCIe 6.0 development phase.



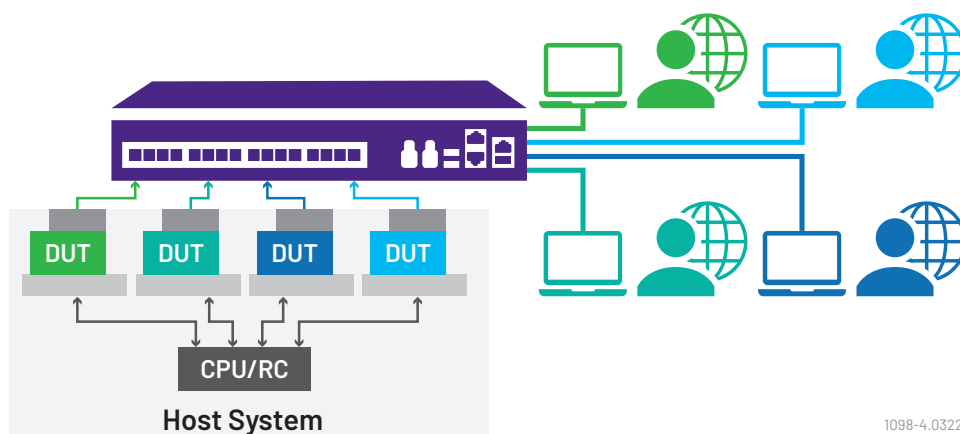
1294.900.1022

Multiple Functions on a Single Platform for Equipment Optimization and Reduced TCO

Our PCI Express® Xgig® PCIe5 platform supports legacy data rates – as well as single or multiple Analyzer, Exerciser and Jammer functions on the same chassis. This approach provides users with the ability to optimize equipment to best meet operational and budgetary requirements.

Port Bifurcation and Simultaneous Multi-User Capability

We have also added Analyzer bifurcation capabilities that enable multiple users and simultaneous tests on same platform for additional operational and cost efficiencies.



1098-4.0322



Troubleshooting Complex LTSSM Transactions

Increased data rates at PCIe 5.0 and PCIe 6.0 present interoperability challenges when bringing up links. Xgig PCIe Analyzer/Exerciser platforms support advanced LTSSM Override capabilities that provide designers with insight and techniques to troubleshoot these complex transactions with repeatability.

Robust Software Tools Suite for all Xgig Platforms

Xgig Expert™

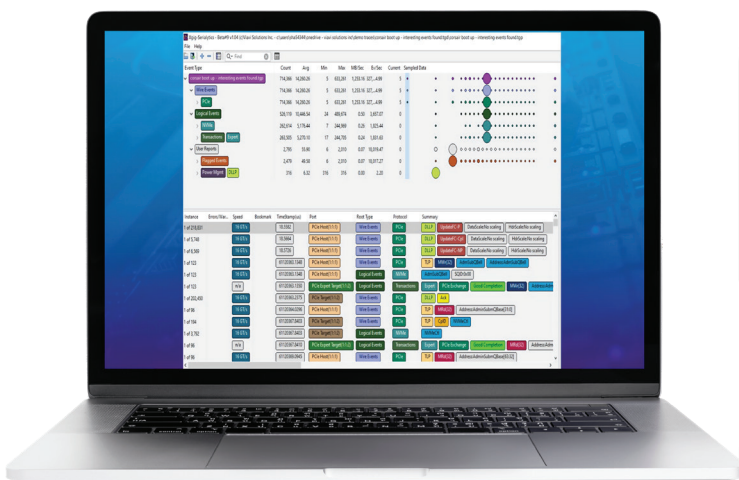
User-friendly interface that aids in rapid data interpretation, performance analysis and troubleshooting.

Xgig Serialytics™

Builds on Xgig Expert to expose hidden behaviors and events in a trace. Enhances contextual debugging and provides smart analytics for serial protocols.

MLTT

Medusa Labs Test Tools suite is an application-based data and signal integrity testing tool enabling developers to identify, locate and resolve errors through stress testing.



Strong support and participation in standards organizations



CXL and NVMe work with PCIe to enhance overall system efficiency.
Xgig tools are accepted for PCI-SIG® and CXL Consortium™ compliance testing.

PCI-SIG, PCIe® and the PCI HOT PLUG® design mark are registered trademarks and/or service marks of PCI-SIG.

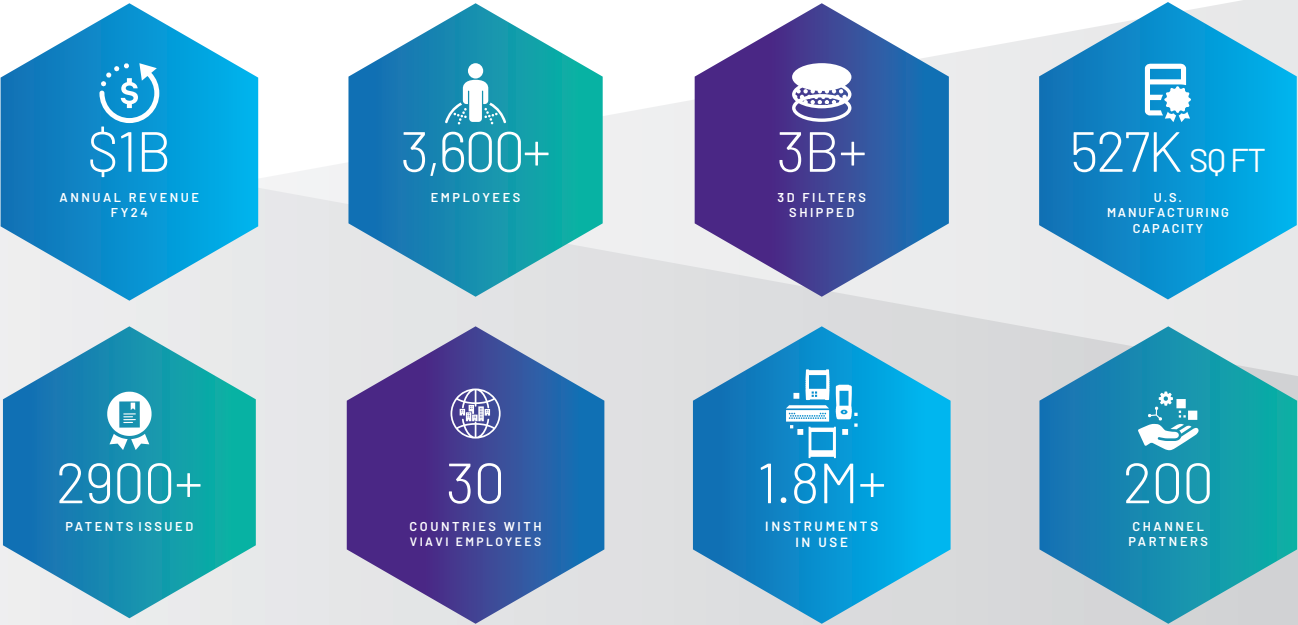
CXL is an exclusively-owned trademark of the CXL Consortium.

NVMe is a registered trademark of NVM Express.

A century of leadership for complex test, measurement and instrumentation solutions

VIAVI is a global provider of network test, monitoring and assurance solutions for communications service providers, enterprises, network equipment manufacturers, government and avionics. With a heritage that dates back a century, we have grown organically and through acquisition to become a highly-resourced company, intensely focused on helping our customers harness the power of instruments, automation, intelligence and virtualization.

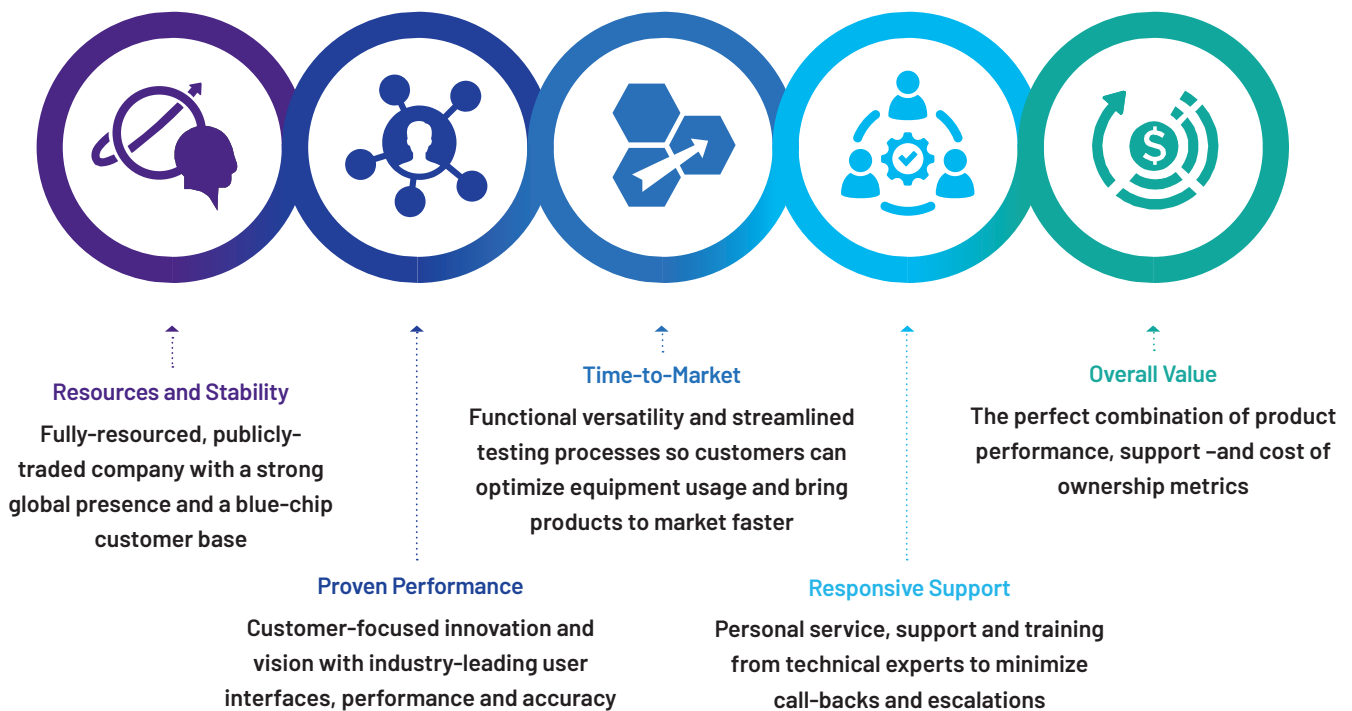
VIAVI Solutions by the Numbers



1215-1.901.0824



WHY VIAVI FOR INTEGRATED PROTOCOL ANALYSIS SOLUTIONS?





viavisolutions.com

Contact Us +1 844 GO VIAVI | (+1 844 468 4284)

To reach the VIAVI office nearest you, visit viavisolutions.com/contact

© 2025 VIAVI Solutions Inc.

Product specifications and descriptions in this document are subject to change without notice.

Patented as described at viavisolutions.com/patents

protocolanalysis-br-snt-nse-ae
30193088 909 0525