

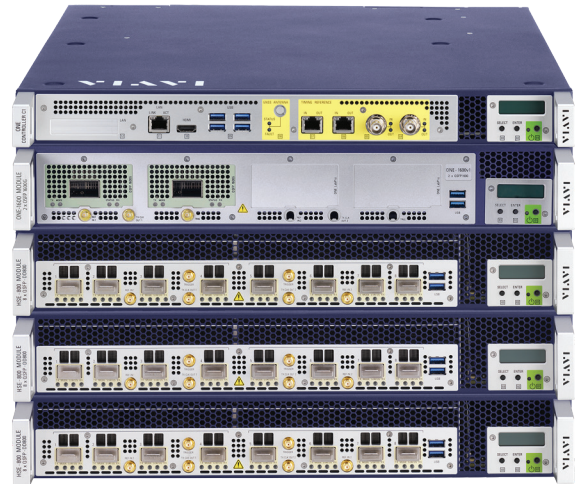
# ONE LabPro

High-Speed Network Test Up to 1.6T for Lab and Live Testing



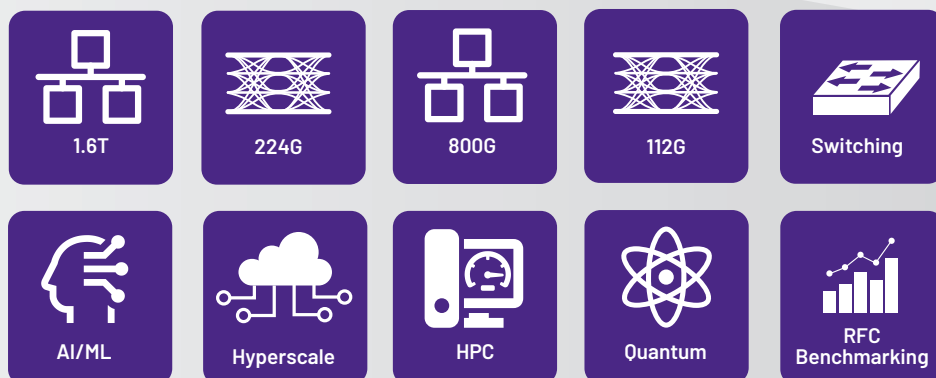
## Multi-Port, Multi Flow

High port count, data and control plane traffic scale to verify Ethernet fabric performance



## Advanced Hardware and Software Testing Solutions for Demanding Network Challenges

Emerging applications like AI, ML, HPC, Virtualization and Quantum Computing – combined with speeds per port up to 1.6T – will create progressively more difficult challenges for manufacturers of chips, pluggables and network equipment. Now, more than ever, engineers rely on the feature-rich functionality and deep insights of VIAVI Lab and Live testing solutions.



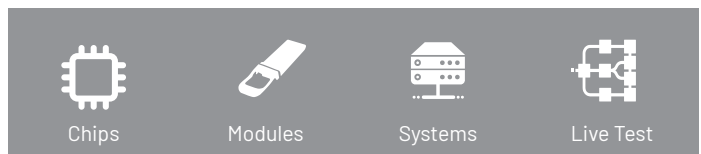
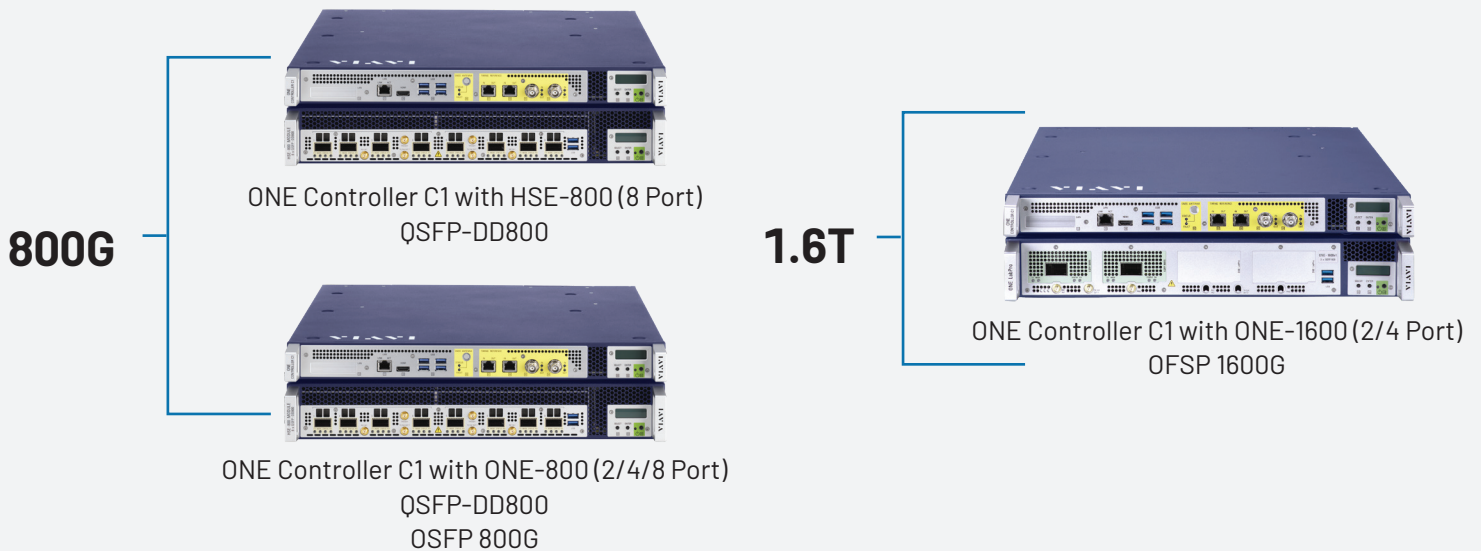
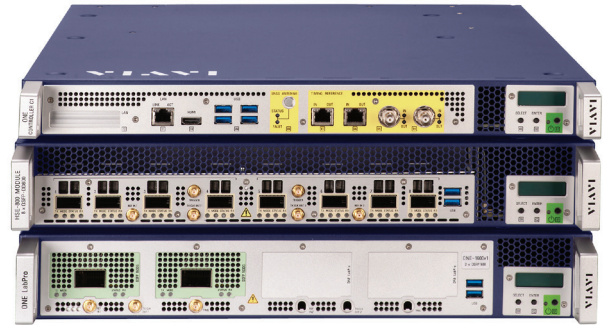
Visit [viavisolutions.com](https://viavisolutions.com)  
or contact your account representative



# Award-winning Platform for Multi-port, Multi-flow High-speed Ethernet Testing

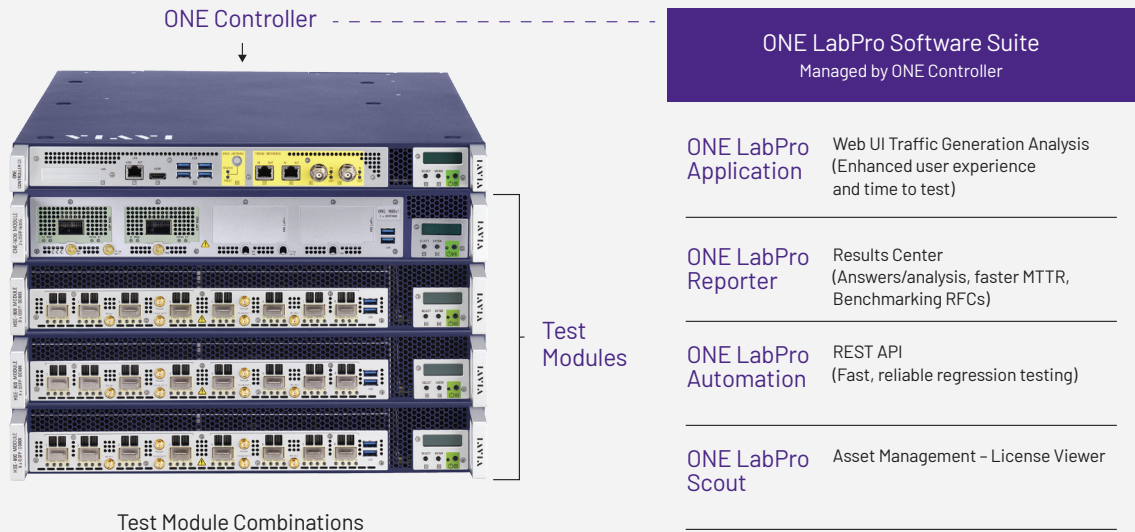
Perfect for IC designers, high-speed module suppliers, ICPs, NEMs and service providers who work on high-speed Ethernet projects, the VIAVI ONE LabPro platform blends insightful physical layer testing capabilities with multi-port, multi-flow Layer 2-3 Ethernet testing. The system facilitates data plane and control plane testing, high-scale traffic generation, and precision delay testing with a Python-based advanced automation framework.

The ONE LabPro platform is configured using an individual controller along with various, independently managed testing modules with individual port capability to 1.6T. Multiple test modules can be stacked or distributed as shown on the following page. Leveraging the ONE LabPro Controller Web UI and Automation, users can add virtual test ports at 10GE, 25GE, 40GE and 100GE.



## Dense and Highly-Scalable Configuration

ONE LabPro features the highest levels of port density and scalability in the market accommodating up to 16 test modules supporting up to 64 x 1600Gb/s test ports, 128 x 800Gb/s test ports, 256 x 400Gb/s test ports or 1,024 x 100Gb/s test ports. The system can synchronize mixed combinations of test modules, centrally managed by the ONE Controller, with versatile and easy-to-use software tools. Star topology connectivity enables accurate latency measurements between any two ports without degradation.

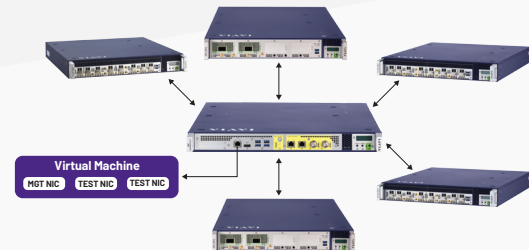


1849.901.0325

## One Controller – Independent Module Management

The ONE Controller connects and independently controls up to 16 modules in a star architecture. The system offers full breakout capabilities with multi-user logical port support and single user per logical port granularity. Virtualization adds cost-efficient support for lower-rate interfaces.

### Star Topology Deployment



1835.900.0325

## VIAVI ONE LabPro Platform Benefits

**Modernized easy-to-use WebUI**  
Enable new engineers to hit the ground running

**Increase Utilization**  
Faster path and less expertise to automate test cases

**Intelligent Results**  
True web-based data-mining and reporting



**Advanced System Architecture**  
Independent controller, flexible connectivity to test modules

**Pay-as-you-grow Licensing**  
VIAVI hosted or private deployment options

**Lower Cost of Ownership**  
Fully inclusive, predictable service offering

1848.900.0824

## ONE LabPro Care – All-inclusive Service Offering

ONE LabPro Care is an all-inclusive, fixed-fee service offering designed to enhance return on investment and eliminate unforeseen expenses.

This easy-to-understand support plan includes everything you would expect including extended warranty, loaner program, software maintenance, an online ONE LabPro Knowledge Base, and the technical support only VIAVI can provide. ONE LabPro Care subscribers also will have access to Customer Success Managers who can help with onboarding, resolution, and escalation if necessary. A variety of Professional Services can be added as an option.



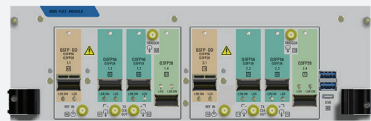
1845-800-0724

## VIAVI ONT-800 Optical Network Testers

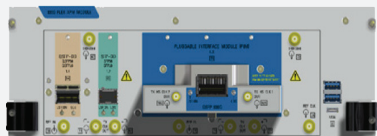
VIAVI ONT-800 is the industry standard for physical layer granularity up to 800G including PHY, PCS, and FEC along with support for Coherent and the latest Ethernet standards.



ONT N-PORT (100G)



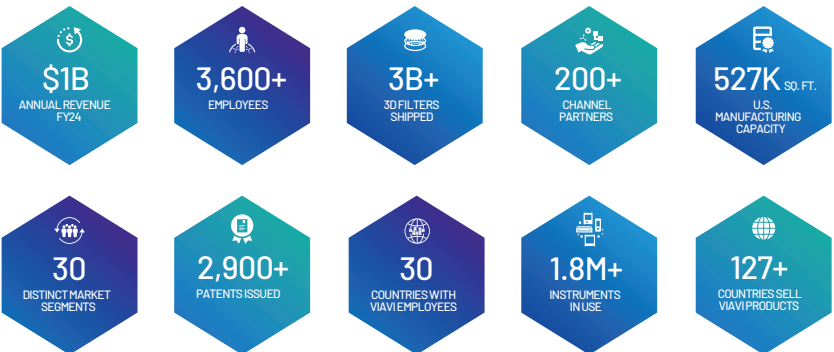
ONT 800G FLEX (400G)



ONT 800G XPM (800G)



## Trusted by Engineers for More Than 100 Years



Personal customer support and deep technical expertise you have come to expect from VIAVI



[viavisolutions.com](https://viavisolutions.com)

Contact Us +1 844 GO VIAVI | (+1 844 468 4284)

To reach the VIAVI office nearest you, visit [viavisolutions.com/contact](https://viavisolutions.com/contact)

© 2025 VIAVI Solutions Inc.

Product specifications and descriptions in this document are subject to change without notice.

Patented as described at [viavisolutions.com/patents](https://viavisolutions.com/patents)

onelabpro-br-snt-nse-ae  
30194086 903 0325