

Quick Card

FiberChek SideWinder Fiber Microscope Adding Optical Settings using FiberChekPRO PC software

This quick card describes how to add optical settings to the FiberChek SideWinder Fiber Microscope using VIAVI FiberChekPRO™ software.

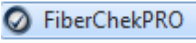
Equipment Requirements:

- FiberChek SideWinder Fiber Inspection Microscope
- Personal Computer (PC) or Laptop
- FiberChekPRO Software version 2.3.3 or greater (download at <http://fcpro.updatemyunit.net/>)
- USB to USB-C cable



Figure 1: Equipment Requirements

Start FiberChekPRO:

1. Connect the FiberChek SideWinder USB-C Connector to a USB port on your laptop or PC using a USB to USB-C cable.
2. Click the **FiberChekPRO** icon  in the Windows® Start menu on your PC or laptop to launch FiberChekPRO.
3. The **FiberChekPRO** software will identify the connected FiberChek device. If new firmware is available, a window will be displayed with instructions to perform the update. Press **Yes** and follow screen prompts to Update Firmware.

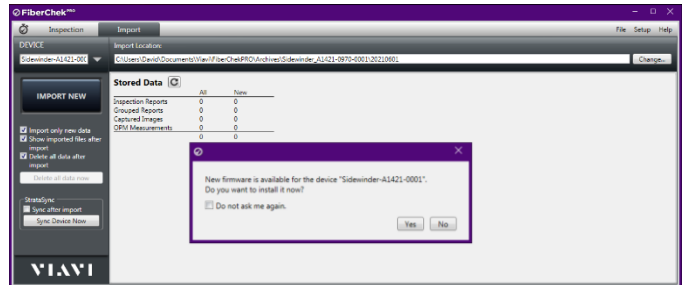

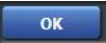


Figure 2: Update Firmware prompt

Setup Sidewinder:

1. Click the **"Setup"** option in the upper right corner of the screen and select the second option, **Sidewinder...**
2. Select **Optical Settings** to display a list of **Available** settings.
3. Select the desired Optical Setting in the **Available** column, and click .
4. Click  to add the new optical setting to Sidewinder.

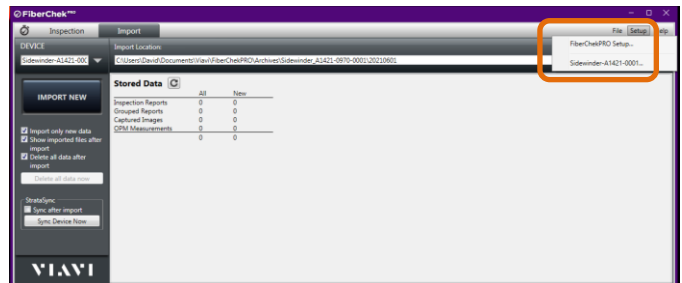


Figure 3: Setup Sidewinder

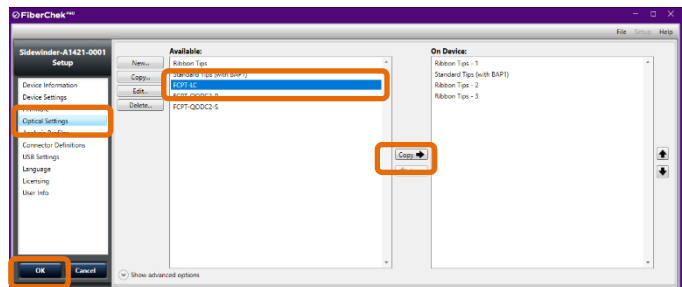


Figure 4: Copy Optical Settings