

Quick Card

T-BERD/MTS-2000, 4000 and SmartOTDR Smart Access Anywhere™

This quick card describes how to use **VIAVI Smart Access Anywhere (SAA)** software to remotely operate the T-BERD/MTS-2000, T-BERD/MTS-4000 and SmartOTDR, and how to transfer configuration files, test reports and other data between the instrument and a Personal Computer (PC).

Equipment Requirements:

- PC running Windows operating system
- T-BERD/MTS-2000, 4000 or Smart OTDR equipped with:
 - Software Release V16.22 or greater
 - Wireless option for Wi-Fi Connectivity
- CAT5E or better cable, for remote operation via the T-BERD/MTS RJ-45 Ethernet Management Port
- Internet connection from the PC and T-BERD/MTS or a direct Ethernet/IP connection between the PC and T-BERD/MTS (via LAN or CAT5e or better direct cable attachment)



Download and Install VIAVI Smart Access Anywhere software:

1. On user PC open an Internet browser and navigate to VIAVI Smart Access Anywhere software portal: <http://smartaccess.updatemyunit.net/>.
2. Click on link under **Download latest update of SmartAccessAnywhere Software for Windows** to download the latest Smart Access Anywhere software release:

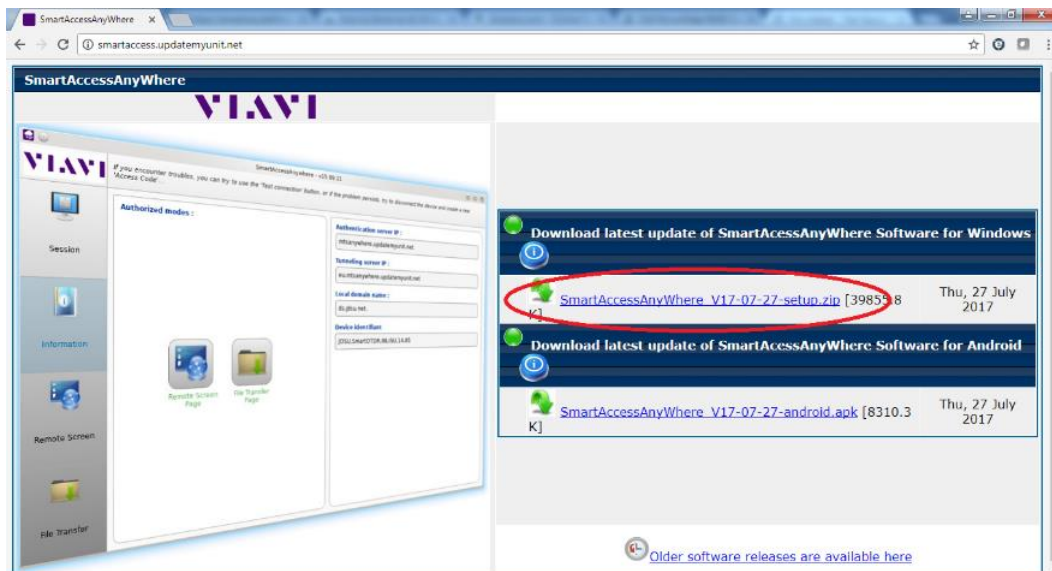




Figure 1: Updatemyunit.net software portal

3. Open the downloaded .ZIP archive and extract the executable Smart Access Anywhere installation image.
4. Double click on the installation image and follow the on-screen instructions to install the Smart Access Anywhere application.

Configure T-BERD/MTS Connectivity Settings:

1.  Press the **ON/OFF** button to turn on the T-BERD/MTS or SmartOTDR.
2.  Press the **HOME** button to display the **Home Screen**.

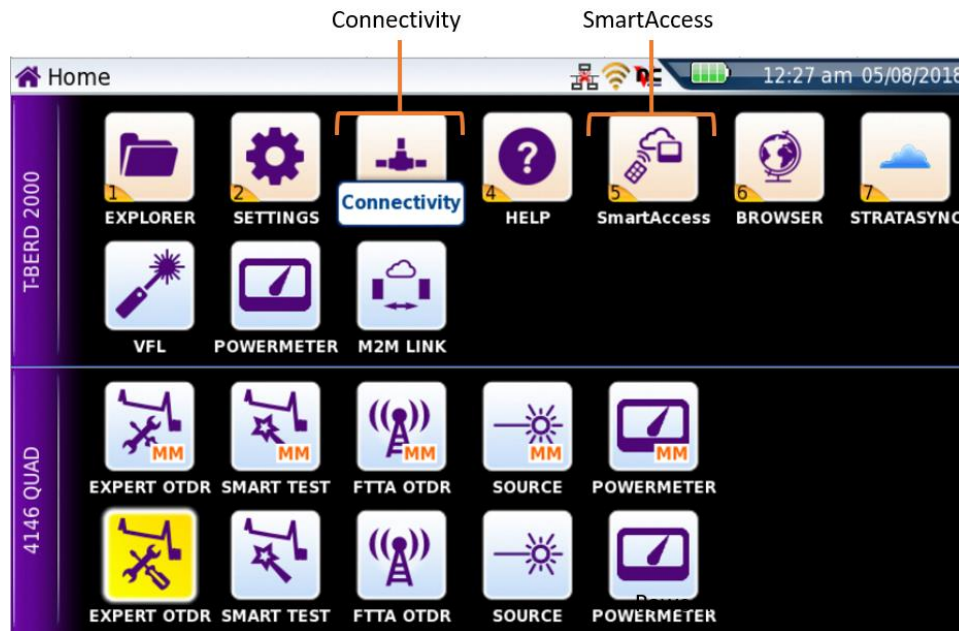





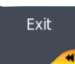



Figure 2: Home Screen

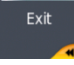
3.  Tap the **Connectivity** icon to view the **Connectivity Screen**.
4.  For remote access using **Wi-Fi**:
 - a.  Tap the **Wireless 802.11** icon to view Wireless Connectivity settings.
 - b.  Tap the **Wireless** softkey to enable wireless configuration.
 - c. **Set Wlan Mode to Wireless Client.**
 - d.  Tap the **Scan SSID** softkey and **Select** the desired Wi-Fi network.
 - e. Provide login credentials to join the network and obtain an IP address.
 - f.  Tap the **Exit** soft key to return to the **Connectivity Screen**. The IP Address will be displayed in the lower half of the screen.

5.  For remote access using the T-BERD/MTS **RJ-45 Ethernet Management Port**, tap the **Ethernet** icon to view Ethernet Connectivity settings.

- a. Open the flap on the top of the test set to access the management ports.
- b. Connect CAT5E or better cable between the T-BERD/MTS RJ45 connector and the router or PC.



Figure 3: T-BERD/MTS 2000, Top view

- c. If using DHCP, set **Mode** to **Dynamic** and wait until unit obtains an IP address.
- d. Otherwise, set **Mode** to **Config 1** and configure a static IP address.
- e.  Tap the **Exit** soft key to return to the **Connectivity Screen**. The IP Address will be displayed in the lower half of the screen.

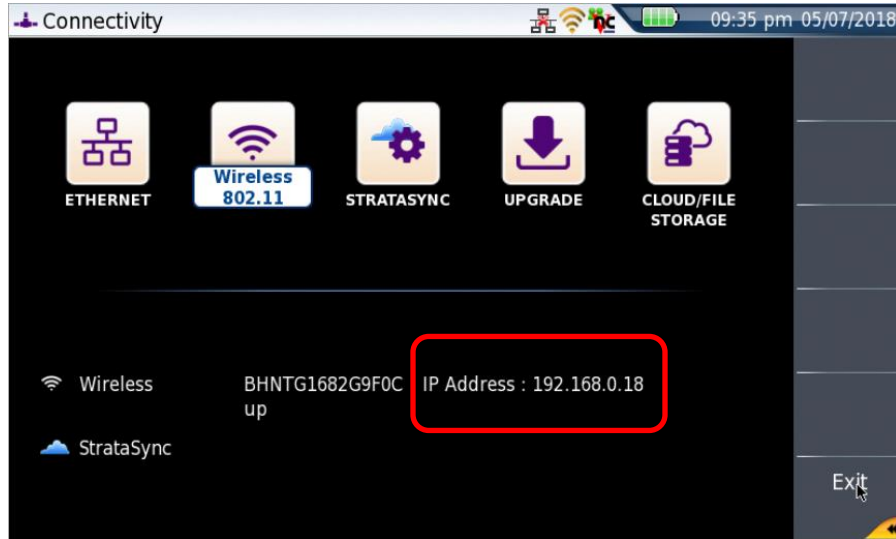
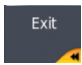

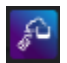


Figure 3: Connectivity Screen

- 6.  Tap the **Exit** soft key to return to the **Home Screen**.
- 7.  If you are establishing the remote connection via the internet, tap the **Smart Access** icon to register with the VIAVI SAA server and obtain the access code. Once the unit is connected, note the **Access code**. The access code must be used if the T-BERD/MTS is on a private network, such as a Wi-Fi Hotspot or Wireless LAN.

Operate the T-BERD/MTS 2000 from your PC with Smart Access Anywhere:

- 1.  Launch the VIAVI SmartAccessAnywhere application and enter the T-BERD/MTS Access Code or IP Address in the text box labeled **Access code or local IP address**.

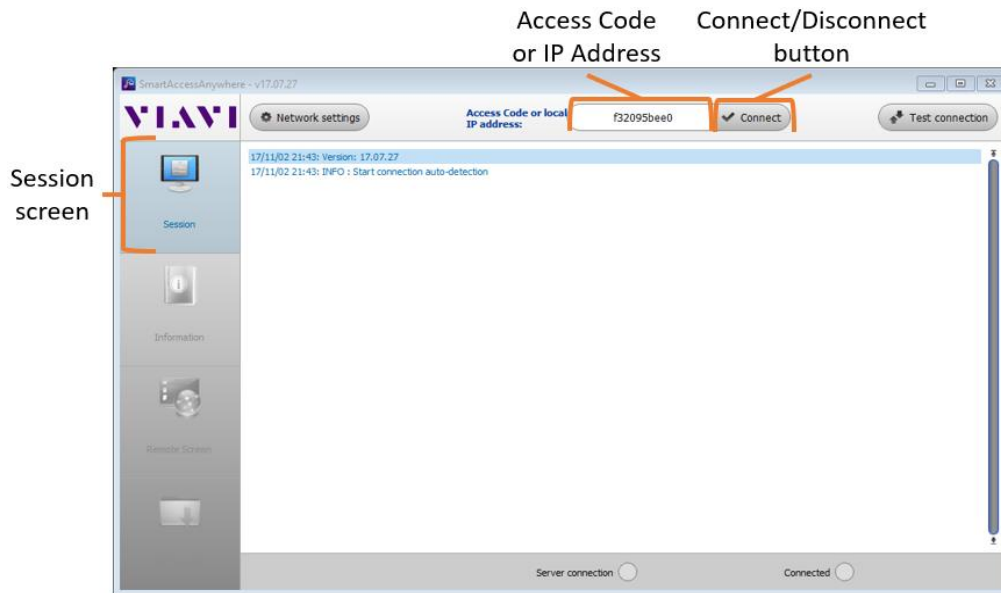


Figure 4: SmartAccessAnywhere Session Screen

- 
 Click the **Connect** button and wait for connection.

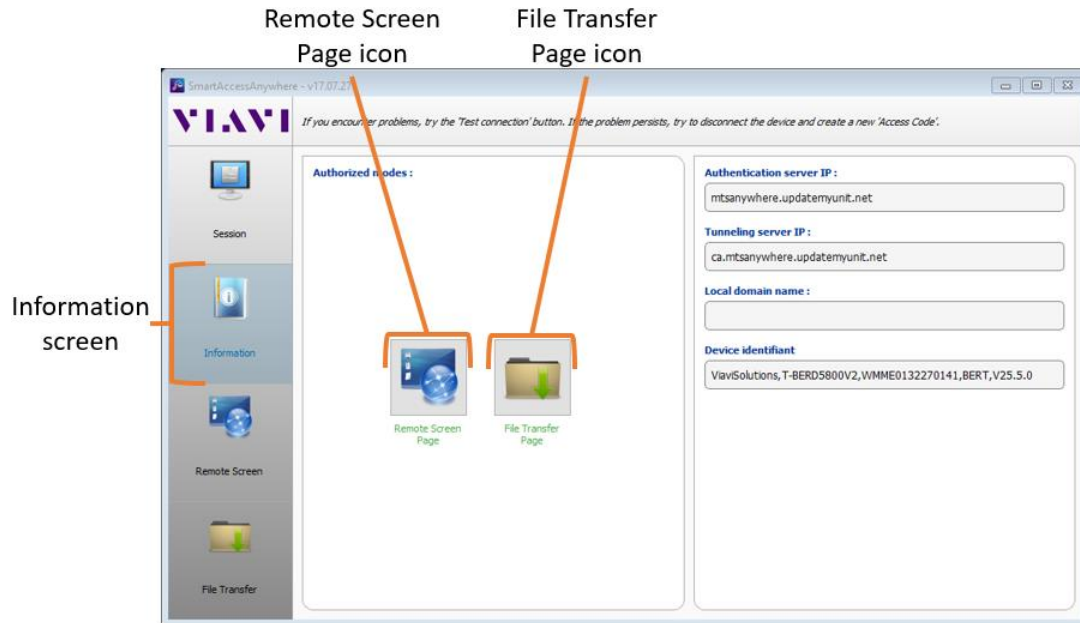




Figure 5: SmartAccessAnywhere Information Screen

- 
 Click the **Remote Screen Page** icon to gain access to the T-BERD/MTS user interface, where you can configure tests, run tests, or perform any other actions using your mouse instead of the touchscreen.
- 
 Click the **File Transfer Page** icon and select any configuration files, reports, or other files and use the **Upload** or **Download** buttons to copy the file(s) to/from the T-BERD/MTS.

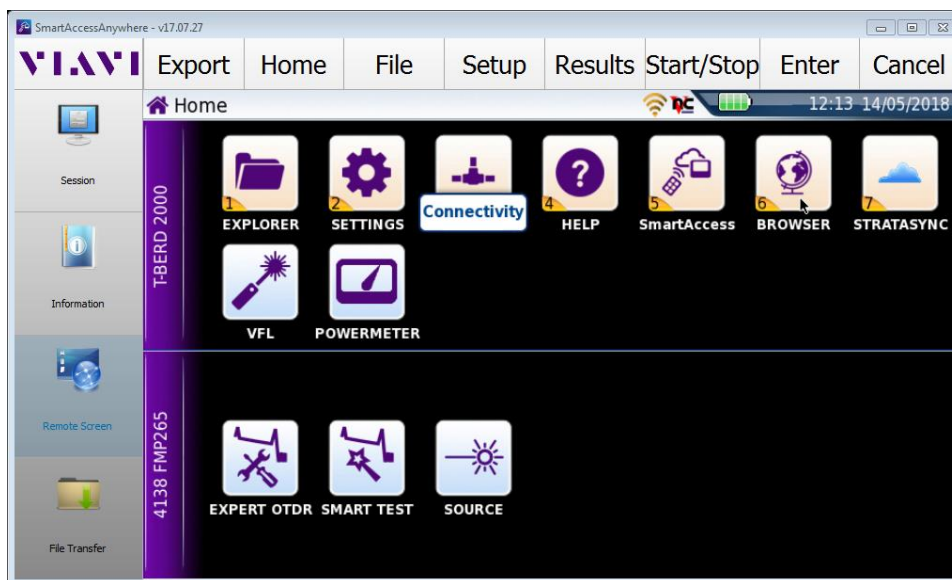


Figure 6: SmartAccessAnywhere Remote Screen Page