

## Broadband Power Meters and Light Sources

	VFL	FI-10 FI-11	FI-60	MP-60A MP-80A	OLP-35v2	OLS-35v2 OLS-36v2	OLP-82 OLP-85	OLS-85
Power Meter		FI-11	•	•	•		•	
Live Fiber Identifier		•	•					
Light Source	•					•		•
Wavelengths	650 nm (visible)	800 to 1700 nm	780 to 1800 nm	800 to 1750 nm	800 to 1800 nm	1310/1550 (SM) 850/1300 (MM)	780 to 1650 nm	1310/1550 (SM) 850/1300 (MM)
Measurement Range/ Output Level (CW)	5 mW 7 miles	-40 dBm	-20 dBm (LFI) -65 to 10 (PM)	-65 to 10 dBm (-60A) -50 to 26 dBm (-80A)	-65 to 10 dBm	Typ. -3 dBm (SM) -20 dBm (MM)	-65 to 10 dBm (-82) -75 to 26 dBm (-85)	Typ. -3 dBm (SM) -20 dBm (MM)
Fiber Identification (270 to 2 kHz tones)		•	•	•	•	•	•	•
Inspection (P5000i)							•	•
Patch Cord Microscope (PCM)							•	
Recommended Packages	FFL-055 FFL-105	2255/90.05, 2255/90.06 (core power)	FI-60	MP-60A, MP-80A (high power)	OLP-35SC OLP-35V2	OLS-35V2 (SM) OLS-36V2 (SM/MM)	2307/03 (OLP-85) FIT-8201P-PRO	2313/01 (SM) 2313/05 (SM/MM)
					OMK-35V2 (OLP-35V2 & OLS-35V2) OMK-36V2 (OLP-35V2 & OLS-36V2)		2128/35 Broadband Kit (OLP-85 & OLP-85)	

## OTDR Modules and Launch Cables

Module	Wavelengths (nm) /Description	Live Fiber Testing	BiDirIL/ ORL	Dynamic Range/Typical Distance		
				1310 nm	1550 nm	1625/1650
FSTOTDR-PRO-I-APC/-PC	1310, 1550			37 dB, 82 km 51 miles	35 dB, 118 km 74 miles	34 dB, 101 km 63 miles
FSTOTDR-PRO-IM-APC/-PC	1310, 1550, Filtered 1650	•				
FSTOTDR-PREMIUM-I-APC	1310, 1550			40 dB, 90 km 56 miles	40 dB, 139 km 86 miles	41 dB, 127 km 79 miles
FSTOTDR-PREMIUM-IM-APC	1310, 1550, Filtered 1650	•				
E4126A-PC, E4126A-APC	1310, 1550					
E4136A-PC, E4126A-APC	1310, 1550			37 dB, 82 km 51 miles	36 dB, 123 km 76 miles	36 dB, 113 km 70 miles
E4146A-PC, E4146A-APC	850, 1300, 1310, 1550					
E4126B-PC, E4126B-APC	1310, 1550					
E4126B-FCOMP-APC/-PC	1310, 1550		•			
E4136B-PC, E4136B-APC	1310, 1550, 1625			42 dB, 96 km 59 miles	40 dB, 139 km 86 miles	40 dB, 124 km 77 miles
E4138FB65-FCOMP-APC	1310, 1550, 1650	•	•			
E4126C-PC, E4126C-APC	1310, 1550					
E4136C-FCOMP-PC/-APC	1310, 1550, 1625		•			
E4138FC65-APC	1310, 1550, Filtered 1650	•		45 dB, 104 km 64 miles	44 dB, 156 km 97 miles	42 dB, 131 km 81 miles
E41DWDMC-PC/-APC	1527.99- 1567.95	•				
E41CWDM10L-PC/-APC	1271 to 1451	•		35 dB, 77 km 48 miles	35 dB, 118 km 74 miles	
E41CWDM10U-PC/-APC	1431 to 1591	•				
E8126D-PC/-APC	1310, 1550			50 dB, 117 km 73 miles	50 dB, 181 km 112 miles	50 dB, 167 km 124 miles
E8136D-PC/-APC	1310, 1550, 1625					
ELC20M-SCA-LC, ELC20M-SCA-SC, ELC20M-SCA-SCA	1310, 1550, 1625, 1650			20 km 12 miles	20 km 12 miles	20 km 12 miles
ELCSM100M-LC-SCA, ELCSM150M-SCA-SC, ELCSM150M-SCA-SCA	1310, 1550, 1625, 1650			100 km 62 miles	100 km 62 miles	100 km 62 miles

Contact Us: +1 844 GO VIAVI | (+1 844 468 4284). To reach the VIAVI office nearest you, visit [viasolutions.com/contact](http://viasolutions.com/contact)



[viasolutions.com](http://viasolutions.com)

© 2025 VIAVI Solutions Inc. Product specifications and descriptions in this document are subject to change without notice. Patented as described at [viasolutions.com/patents](http://viasolutions.com/patents)

electricpowerops-lc-fit-nse-ae  
30194102 901 0825

Line Card



## Fiber Optic, Transport, and Wireless Test Instruments

### Fiber Inspection Microscopes



P5000i USB Fiber Microscope



FiberChek Probe Microscope



INX 660/760 Microscope

### Essential Fiber Instruments



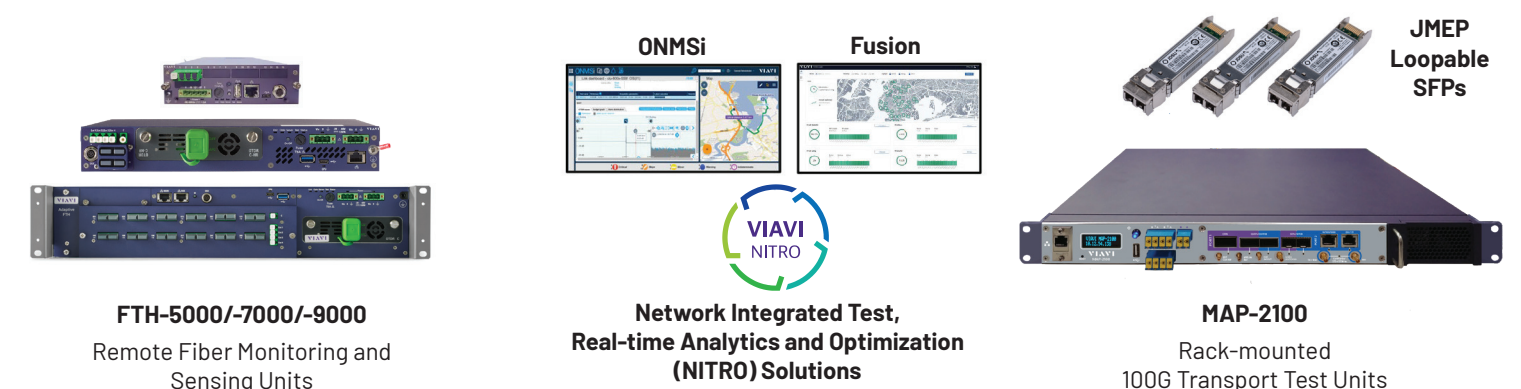
**FI-10/-11/-60 LFI** Live Fiber Identifier  
**FFL-105/-55 VFL** Visual Fault Locator  
**MP-60A/MP-80A** USB Power Meters  
**SmartPocket V2** Broadband Power Meters, Light Sources, and PON Meters  
**SmartClass Fiber Broadband Power Meters, Light Sources, and PON Meters**  
**NSC-200 Network and Service Companion**

### Fiber, Transport, and Wireless Platforms



**Optimizer/SmartOTDR** (Single Mode, PON, Live/Filtered)  
**T-BERD 4000** Fiber Platform  
**T-BERD 5800 100G** Transport and Fiber  
**OneAdvisor 800** Transport, Fiber and Wireless  
**OneAdvisor 1000** Transport and Fiber/DTSS

### Centralized Remote Testing



**FTH-5000/-7000/-9000**  
Remote Fiber Monitoring and Sensing Units

**Network Integrated Test, Real-time Analytics and Optimization (NITRO) Solutions**

**MAP-2100**  
Rack-mounted 100G Transport Test Units



[viasolutions.com](http://viasolutions.com)

© 2025 VIAVI Solutions Inc. Product specifications and descriptions in this document are subject to change without notice. Patented as described at [viasolutions.com/patents](http://viasolutions.com/patents)

electricpowerops-lc-fit-nse-ae  
30194102 901 0825

Modules work with: ● T-BERD 4000 ● T-BERD 5800 100G ● OneAdvisor 800 ● OneAdvisor 1000 ● FTH-5000/-7000/-9000

### T-BERD/OneAdvisor Expansion Modules



#### OTDRs

Single Mode, Multimode, PON, Live/Filtered, CWDM, DWDM



#### FiberComplete PRO™

BiDirectional IL/ORL, OTDR



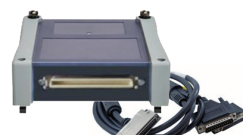
#### OSAs

Optical Spectrum Analyzers



#### Timing

GPS/GNSS, PTP, SYNCE, One-way Delay



#### Serial Datacom

RS232/V.24 BERT



#### Cable and Antenna Analyzer (6 GHz)



#### Fiber Characterization

CD/PMD Optical Dispersion Module and Broadband Source Module



#### DTS

Distributed Temperature Sensing



### OneAdvisor Analysis Modules



#### RF Spectrum Analysis and 100G Transport



#### DTSS Distributed Temperature and Strain Sensing



#### 400G Ethernet/OTN Transport



#### 800G Ethernet/OTN Transport



### Fiber Inspection Microscopes

	P5000i	FiberChek	INX-660	INX-760
Pass/Fail Analysis	●	●	●	●
Integrated Display		●	●	●
Auto-Focus		●	●	●
Auto Tip Identification			●	●
Multi-Fiber Analysis	1 Test = 1 fiber	1 Test = 1 fiber	1 Test = 1 fiber	1 Test = All fibers
Recommended Packages	FBP-SD101-CATV (LC/PC, SC/PC, & SC/APC tips)	FIT-FC-KIT3 (LC/PC, SC/PC, & SC/APC tips)	INX-660-KIT1 (LC/PC, SC/PC tips)	INX-760-KIT2 (LC/PC, LC/APC, SC/PC, SC/APC, MPO/PC & MPO-APC tips)
Options	<a href="#">Fiber Inspection Tips for Handheld Probe Microscopes</a>			

### PON Meters

	OLP-37	OLP-39	OLP-87	OLP-88	Optimeter	NSC-200
GPON Meter	●	●	●	●	●	●
XGSPON Meter	●	●	●	●	●	●
Wavelengths	1490,1577 nm downstream		1490,1550,1577 nm downstream 1270, 1310 nm upstream		1490,1577 nm downstream	1490,1577 nm downstream
TruePON (PON-ID)		●		●		
Fault Finder/OTDR					Filtered 1625 nm	
Ethernet and WiFi Service Test						●
Ethernet Loopback						●
Recommended Packages	OLP-37XV2	OLP-39X-ONT-KIT	FIT-8766P-PRO	FIT-8866-PRO	FIT-8866-PRO FOPT-PRO-M-APC	NSC200-GPON-XGSPON-PRO

### Advanced Fiber and RF Instruments

	SmartOTDR	SmartOTDR T-BERD 4000	T-BERD 5800	OneAdvisor 800	OneAdvisor 1000
Inspection	●	●	●	●	●
VFL	●	●	●	●	●
Broadband Power Meter	MP-60/80A	●	MP-60/80A	●	●
OTDR, PON OTDR	●	●	●	●	●
CWDM and DWDM OTDRs		●	●	DWDM	DWDM
FiberComplete PRO Bidirectional IL/ORL and OTDR)		●		●	●
Optical Spectrum Analysis		●	●	●	●
Optical Dispersion Testing (CD,PMD,AP)				●	
Brillion OTDR, Distributed Temperature and Strain Sensing (DTSS)				DTS	DTSS
Transport (Ethernet, OTN, FiberChannel)			(100G)	(800G)	(400G)
Legacy (T1/PRI, DS3, SONET, C37.94, Serial Datacom)			●		
Wireless, LTE/5G Spectrum Analysis				●	
Cable and Antenna Analysis (CAA)				●	
Recommend Packages	FSTOTDR-PREMIUM-IM-APC	TB4-FCOMP3-B	TB5800-GE-100GE, NSC200-PLATINUM-10G	ONA800A-LR-FC2 (Fiber) ONA800A-SPOB (Wireless) ONA8-1G-10G-100G-400G (Transport)	PACK-DTSS4-ONA