



Xgig Load Tester

How to Set-up a Meshed Bi-Directional Test

Viavi Solutions
1-844-GO-VIAVI
www.viavisolutions.com

© Copyright 2018 Viavi Solutions. All rights reserved. Copyright release: Reproduction and distribution of this guide is authorized for US Government purposes only. All other trademarks and registered trademarks are the property of their respective owners. Specifications, terms, and conditions are subject to change without notice.

To set-up a meshed bi-directional test in Load Tester, the first thing that you will want to open the “Port Selection and Domain Setup” window. Highlight and lock down Ports 1-4 on your Analyzer. Once the ports are highlighted (shown in blue), you would then right-click and select “Use Ports As...” and then “Load Tester FC”.

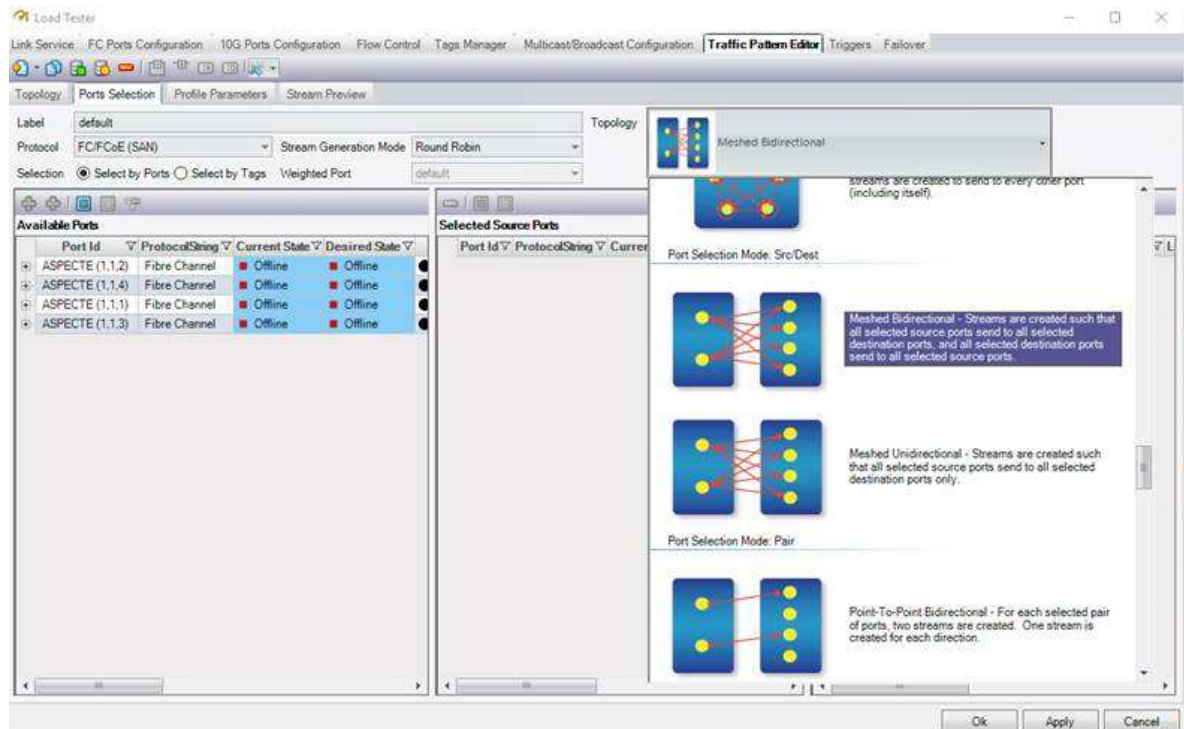


When locked, it will look like this.

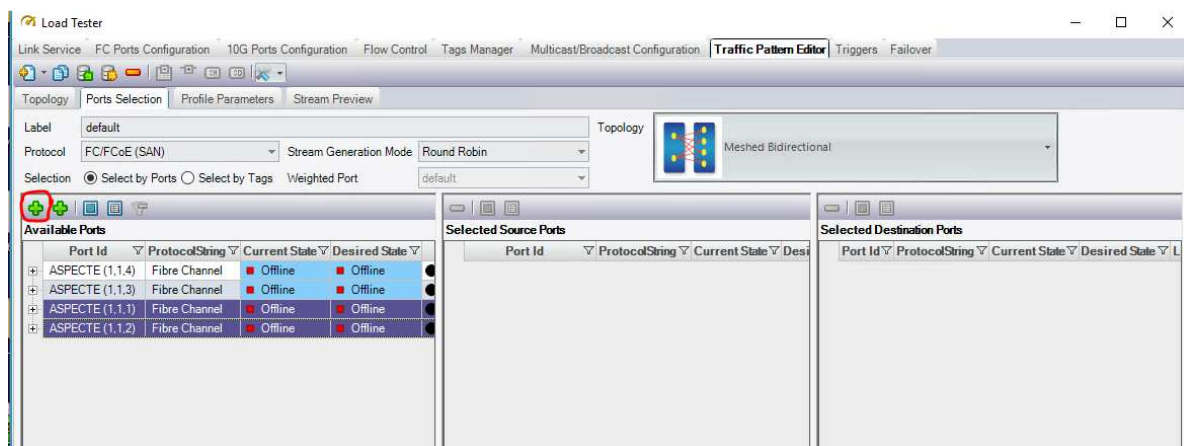


You can then close the “Port Selection and Domain Setup” window.

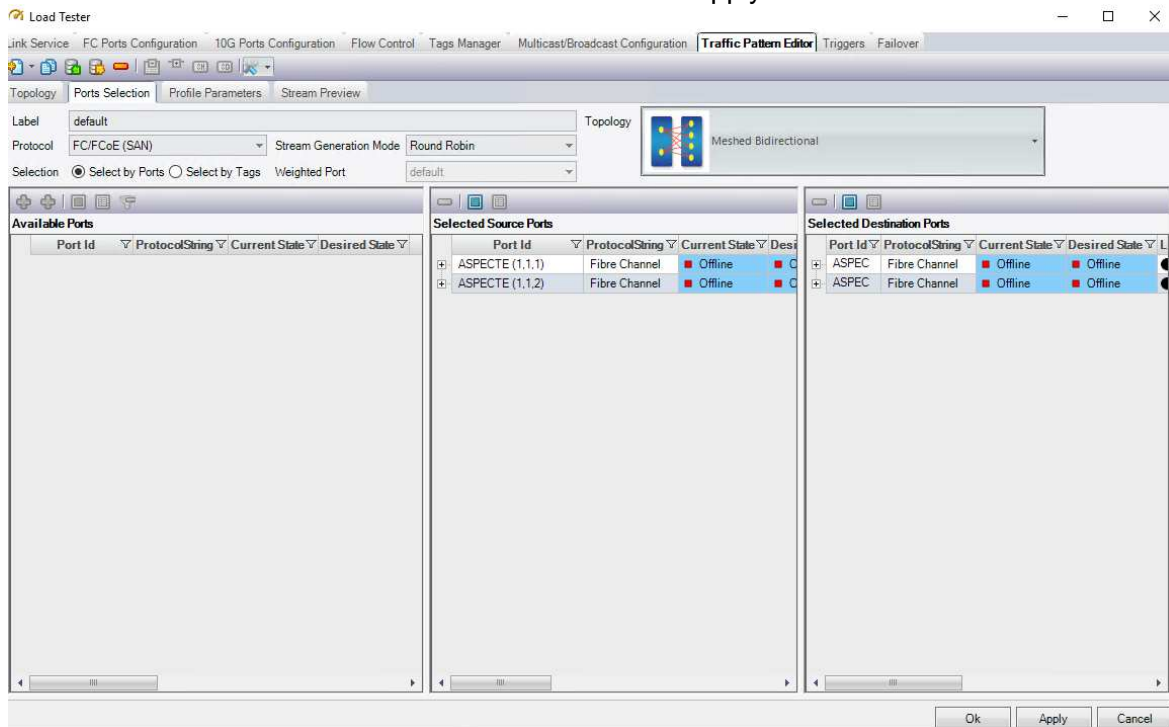
Next, go into the Configuration by clicking “Configuration” and then “Configure FC Ports”. From there, go into the Traffic Pattern Editor, and go to the Port Selection tab. Change the topology to “Meshed Bidirectional”.



Highlight ports (1,1,1) and (1,1,2), and click on the first Green “+” sign. This will move the first two ports to the “Selected Source Ports”.



Do the same for ports (1,1,3) and (1,1,4), but this time, select the second Green “+” sign. This will move them to the Selected Destination Ports. Click Apply and then OK.



From this point forward, your configuration is now set to Meshed Bi-Directional, and you can set up the additional Load Tester parameters.