

CX150 ComLite Communications Service Monitor

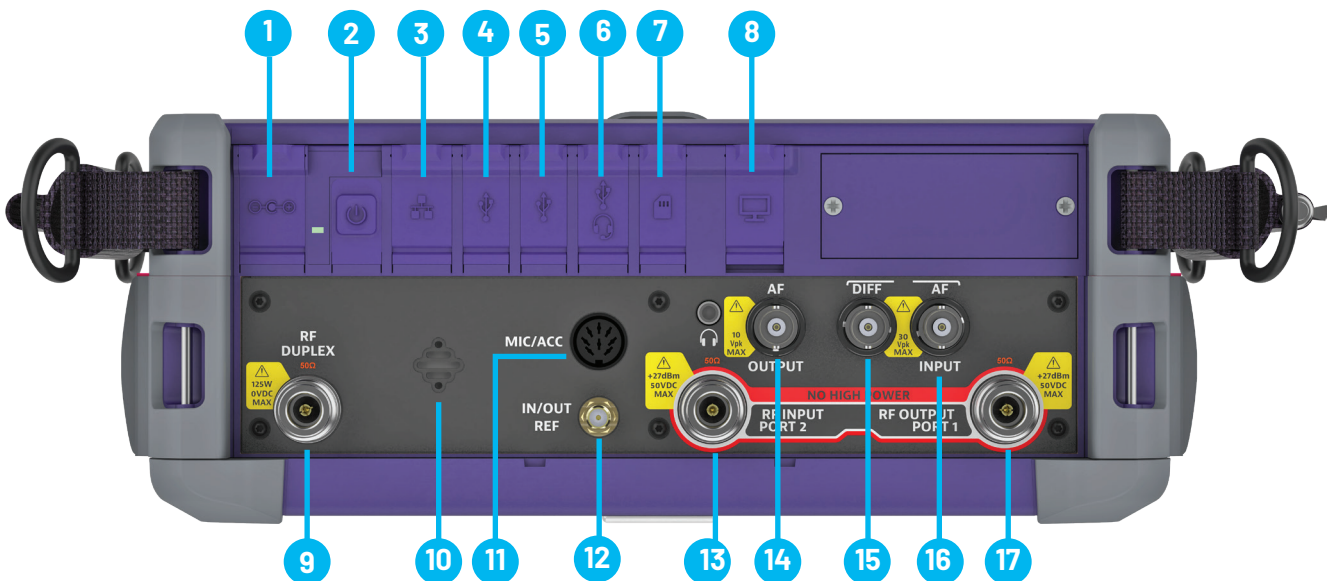


Introducing the ultimate test companion for legacy analog radio systems – a purpose-built solution tailored for the critical needs of analog push-to-talk communications. Whether you're maintaining public safety networks, servicing utilities, or supporting industrial fleets, this rugged and reliable radio test set delivers fast and accurate diagnostics and alignment in the field or the shop. With intuitive operation, essential test features, and a compact design, it brings modern efficiency to the radios that built today's mission-critical communications. Stay compatible. Stay prepared. Stay in control.

At A Glance

- Dimensions: 11.2 in x 6.8 in x 4.2 in
28.4 cm x 17.4 cm x 10.7 cm
- Display Size: 8 inches (23 cm), diagonal
- Weight: 8.6 lbs. (3.9 kg), Base Unit
- Battery: Internal, 3 Hour Operation
- Rugged: 30 G Shock
- Test Range: -135 dBm to +0 dBm
- Frequency Range: 1 MHz to 1 GHz
- Technologies: Analog

- | | | |
|------------------|-----------------------|--|
| 1. Power Jack | 7. SDCard | 13. RF Input Port 2 |
| 2. Power Button | 8. Micro HDMI Out | 14. AF Output |
| 3. Ethernet | 9. RF Duplex | 15. AF Differential Input (High Impedance) |
| 4. USB Port | 10. Microphone | 16. AF Input (Programmable Impedance) |
| 5. USB Port | 11. MIC/ACC | 17. RF Output Port 1 |
| 6. USB/Headphone | 12. 10 Mhz In/Out Ref | |



Standard Features

The list of features below come standard on every CX150.

- 1 GHz frequency range
- Smart Access Anywhere
- Spectrum Analyzer
- StrataSync
- WiFi
- Remote Command Interface
- VNC
- Bluetooth

Optional Features

The below features are options available on the CX150.

- Bird Power Meter
- Cable and Antenna Analyzer (1-Port)
- VIP Tool
- Tracking Generator

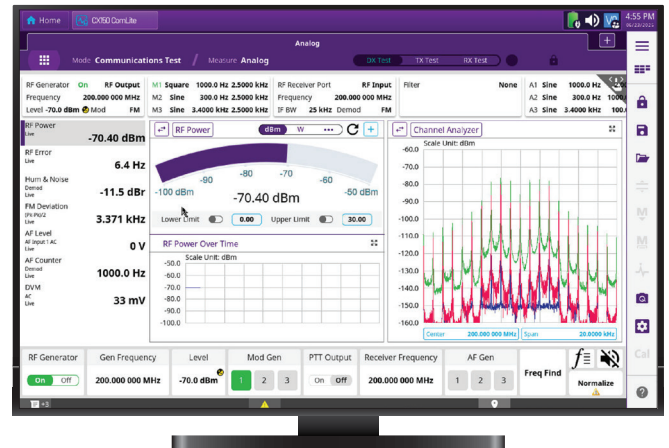
Your Essential Tool for Analog Support

Designed for legacy analog push-to-talk systems, this rugged, purpose-built test set delivers fast, accurate diagnostics and alignment—whether you’re supporting public safety, utilities, or industrial fleets. Compact, reliable, and easy to use, it brings modern efficiency to the radios that still power critical communications. Stay compatible. Stay prepared. Stay in control.



Innovative User Interface

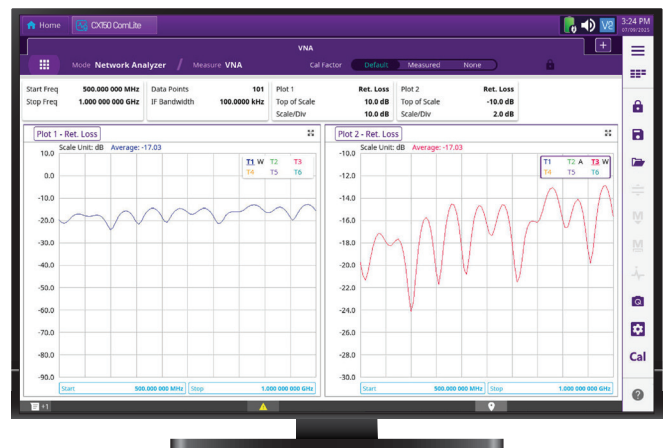
Continuing from the CX300, the revolutionary QuickSwitch™ feature streamlines testing by enabling rapid switching between Duplex, Transmit, and Receiver Tests without disrupting the current measurement setups. QuickSwitch™ also allows switching between analog, Spectrum Analyzer, and Cable and Antenna Analysis Analyzer.



Multi-Tab User Interface with QuickSwitch

Cable and Antenna Analysis (Optional)

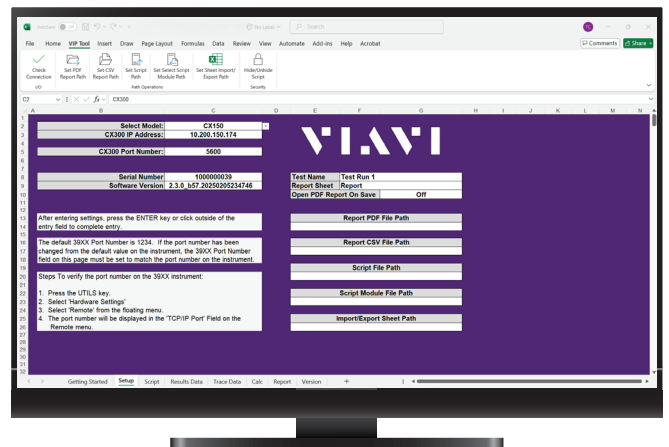
The CX150 Cable and Antenna Analysis feature enables testing of Distance to Fault, VSWR, and Return Loss using its optional 1-port Vector Network Analyzer. For precise, calibrated measurements, this option requires the Short-Open-Load Calibrator.



Cable and Antenna Analysis

VIP Tool (Optional)

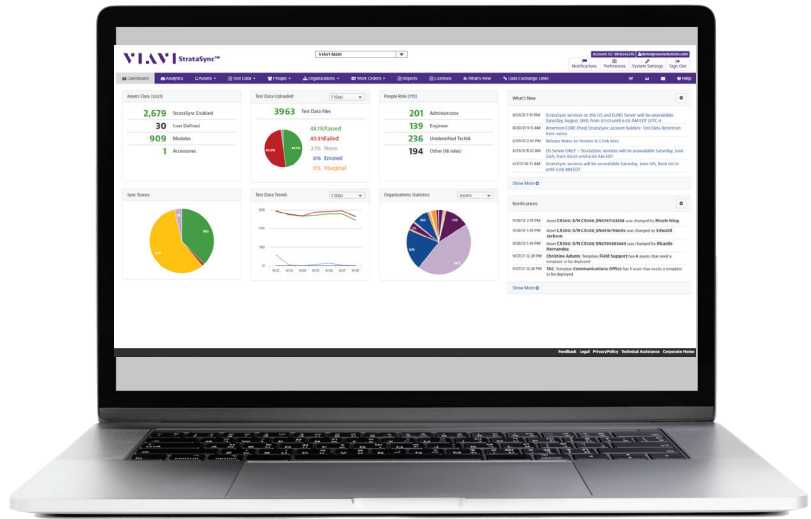
The VIP Tool removes unnecessary complexities with traditional instrument programming by leveraging the power of Microsoft Excel. It is scalable, allowing you to create scripts that are as simple or as intricate as you desire. This tool allows you to easily create and export easy-to-read reports with supporting graphics, like Channel Analyzer and Distribution Plots. Work smarter, not harder with the VIP Tool.



Create Scripts and Reports with the VIP Tool

StrataSync

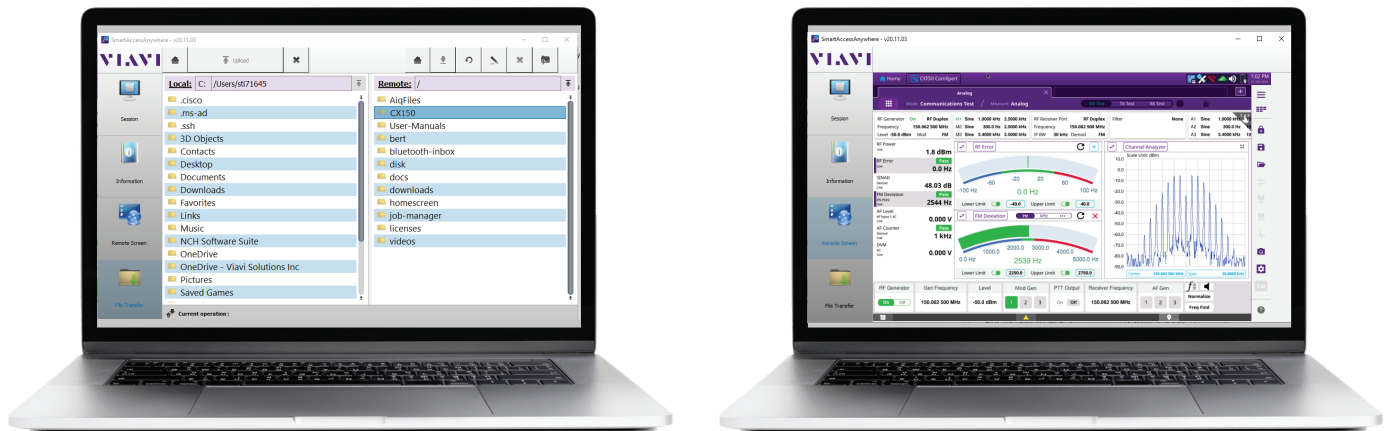
StrataSync is a hosted, cloud-based software application that provides asset configuration and test-data management from anywhere in the world. The wireless technology in the CX150 lightens your workload by synchronizing your test results to the cloud and keeping your test set updated with the latest software. Easily save and access test results for both manual and automated tests.



StrataSync Dashboard

SmartAccess Anywhere

The VIAVI SmartAccess Anywhere application is a handy tool for remotely controlling the CX150. The SAA App enables remote operation from your PC or portable device, which allows your to operate the unit and transfer files from a remote location.



SmartAccess Anywhere

Ordering Information

Versions and Options

Order Number	Description
CX150	CX150 ComLite Communications Service Monitor
	Standard Accessories
	AC / DC Power Adapter
	AC Power Cord - US
	AC Power Cord - China
	AC Power Cord - Europe
	AC Power Cord - UK
	Internal Battery, 98 Watt-Hour, Lithium-Ion (Qty 1)
	Front Cover
	Shoulder Strap
	Side Strap (Qty 2)
	Stylus
	Adapter, N(m) to BNC(f) (Qty 3)
	StrataSync

Options

Recommended Accessories

CX150-SCAA	Cable and Antenna Analysis (1-port Vector Network Analyzer) (Requires CX200-ASOL)
CX150-SPAA	Software Post Analysis Application
CX150-SPSB	External Power Sensor Support, BirdRF 501xD
CX150-SVIP	VIP Tool
CX300-AANT1	Antenna Kit, 1 GHz
CX200-ABAT	Internal Battery, 98 Watt-Hour, Lithium-Ion
CX300-ACBL	RF Cable
CX200-ACH	Hard Transit Carrying Case
CX200-ACS	Soft Carrying Case

Optional Accessories

CX200-ABATC	External Battery Charger
CX200-ACB	Carrying Case, Backpack
CX200-ACS10	10 Amp Current Shunt 0.01 Ohm
CX200-ADC	Power Adapter, Automotive DC/DC (Cigarette Lighter)
CX300-AMIC	Microphone
CX300-ASOL	Calibrator (Short-Open-Load)
20327	Adapter, N(m) to BNC(f) (Qty 3)
82556	Attenuator (6 dB/150 W), 1.5 GHz
92793	Bird 5017D Wideband RF Power Sensor
140227	Attenuator (40 dB/2 W), 18 GHz, Type N
22124982	Side Strap (Qty 2)
22136776	Front Cover
22141588	Shoulder Strap
22152084	Desktop Stand

Calibration Certificates

CX150-C9001	Calibration Certificate with Test Data (ISO 9001)
-------------	---

Ordering Information continued

Care Support Plans

SilverCare (Includes Extended Warranty and Calibration Plan)

CX150-SILVER-3	SilverCare - First 3 Years
CX150-SILVER-5	SilverCare - First 5 Years

MaxCare (Includes Extended Warranty, Calibration Plan, Loaner, and Accessory Replacement)

CX150-MAXCARE-3	MaxCare - First 3 Years
CX150-MAXCARE-5	MaxCare - First 5 Years

Certified Calibration Care Plan Add-ons (Requires corresponding SilverCare/MaxCare Plan)

CERT-CAL-DATA-3	Certified Calibration Data - Pre and Post Cal Data Report for Care Plans - First 3 Years
CERT-CAL-DATA-5	Certified Calibration Data - Pre and Post Cal Data Report for Care Plans - First 5 Years

Training

Contact us for Training and Support Options

VIAVI Care Support Plans

Increase your productivity for up to 5 years with optional VIAVI Care Support Plans:

- Maximize your time with on-demand training, priority technical application support and rapid service.
- Maintain your equipment for peak performance at a low, predictable cost.

Plan availability depends on product and region. Not all plans are available for each product or in every region. To find out which VIAVI Care Support Plan options are available for this product in your region, contact your local representative or visit: viavisolutions.com/viavicareplan

Features

*5-year plans only

Plan	Objective	Technical Assistance	Factory Repair	Priority Service	Self-paced Training	5 Year Battery and Bag Coverage	Factory Calibration	Accessory Coverage	Express Loaner
 BronzeCare	Technician Efficiency	Premium	✓	✓	✓				
 SilverCare	Maintenance & Measurement Accuracy	Premium	✓	✓	✓	✓*	✓		
 MaxCare	High Availability	Premium	✓	✓	✓	✓*	✓	✓	✓



viavisolutions.com

Contact Us +1 800 835 2352

AvComm.Sales@viavisolutions.com

To reach the VIAVI office nearest you, visit viavisolutions.com/contact

© 2025 VIAVI Solutions Inc.

Product specifications and descriptions in this document are subject to change without notice.

Patented as described at viavisolutions.com/patents

cx150-br-avi-nse-ae
30194522 900 0725