

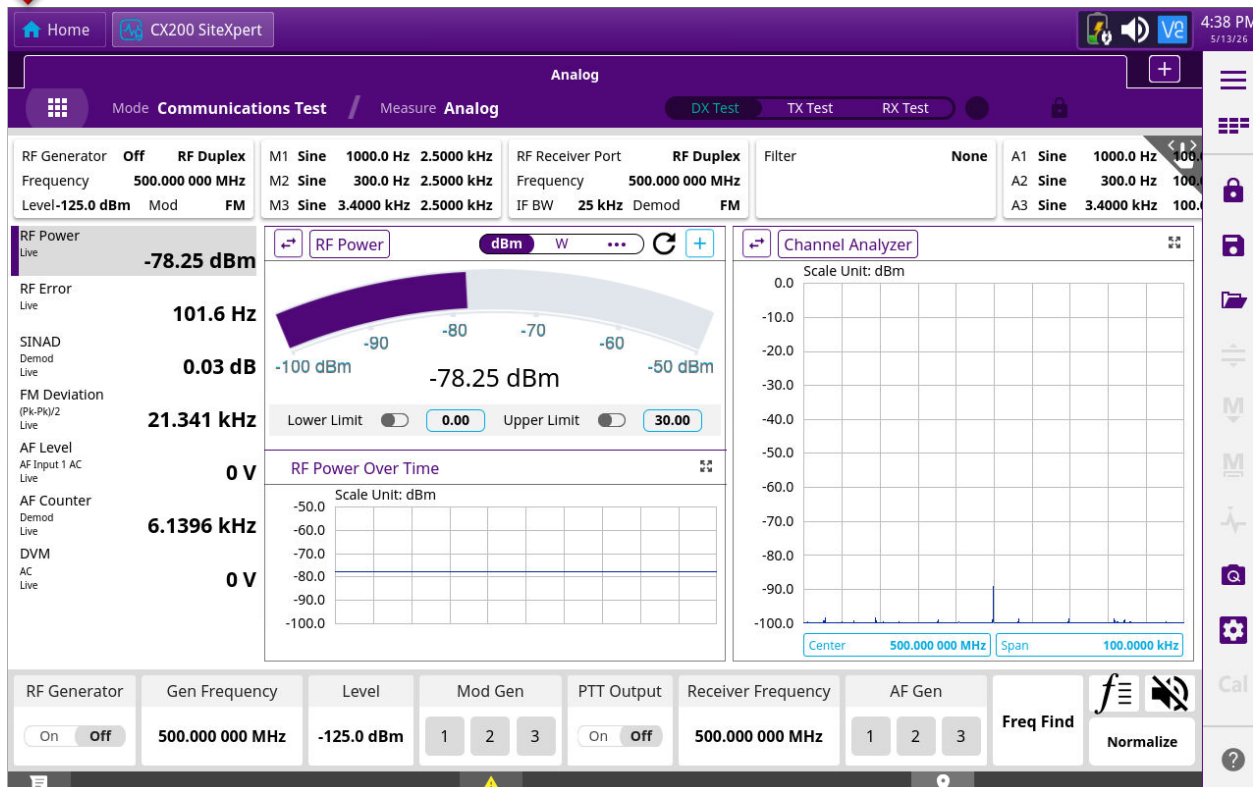
# CX200 System Software and Auto-Test Update Installation



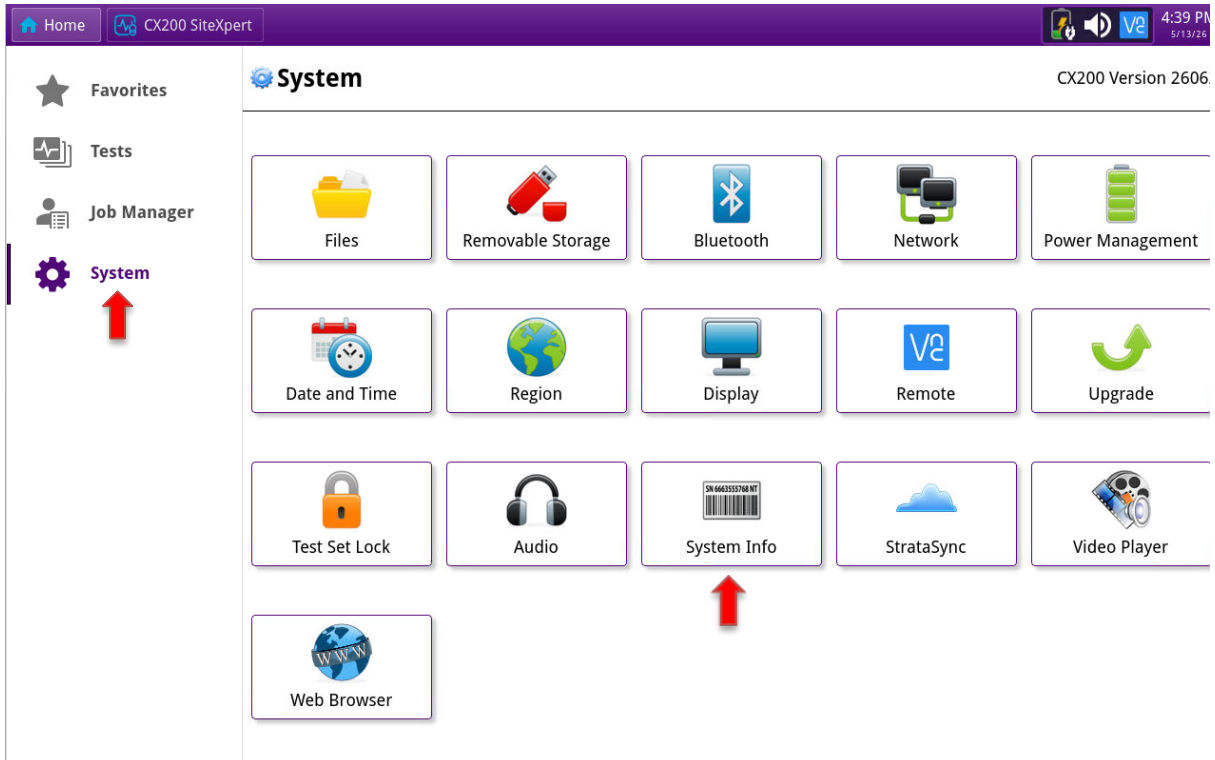
The following procedure explains how to upgrade the System software and the Auto-Test software on the CX200 while connected to the Internet or by USB.

**NOTE: FOLLOW THIS PROCEDURE TO SAVE THE SYSTEM LOG FILE PRIOR TO UPGRADING THE CX300.**

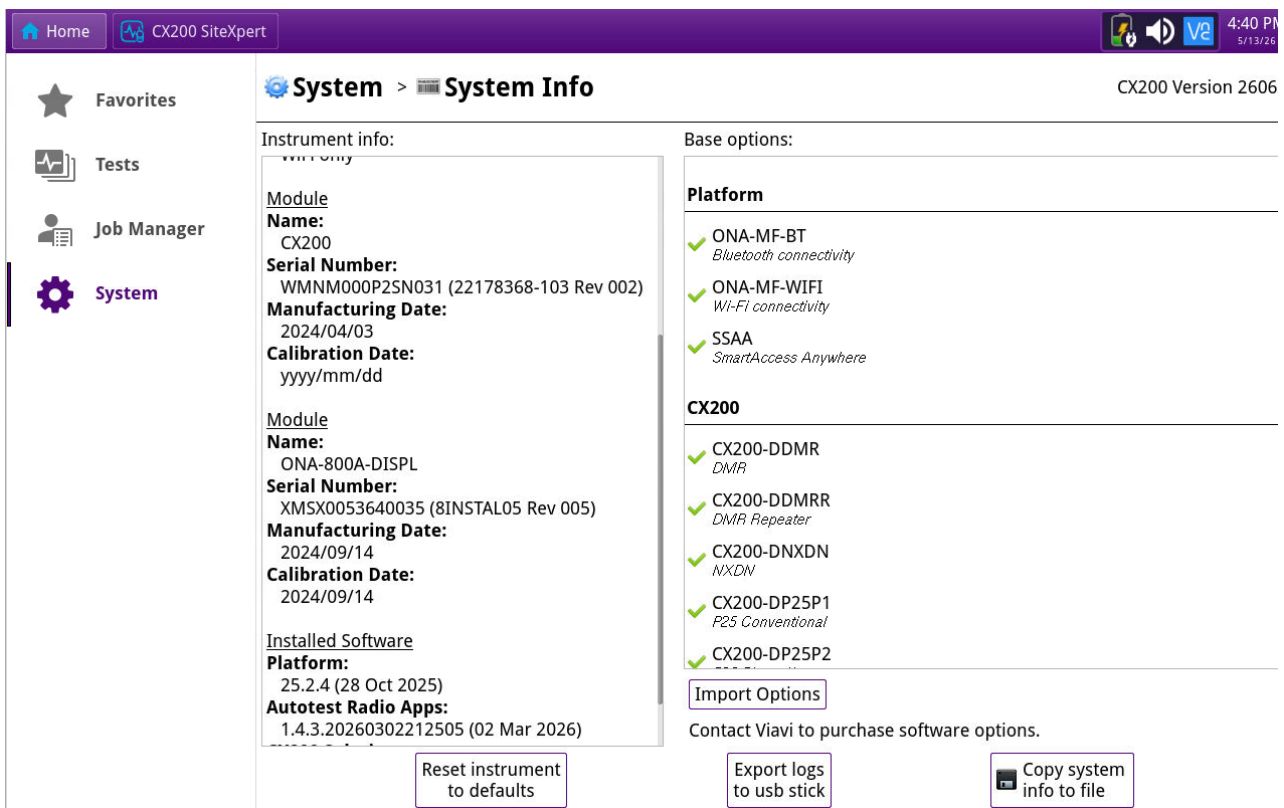
1. On the main screen, SELECT "HOME".



2. Select “SYSTEM” then “SYSTEM INFO”.



3. Insert a USB stick into one of the USB slots. In the “SYSTEM INFO” screen, SELECT “COPY SYSTEM INFO TO FILE”



#### 4. When homepage shows, Select “OK”

The screenshot shows the 'System Info' page in the CX200 interface. A dialog box with a yellow warning icon and the text 'The system information was copied to this file: XHAY0000650008.log' is centered on the screen. A red arrow points from the 'OK' button in the dialog box to the 'Copy system info to file' button at the bottom right of the page. The page content includes:

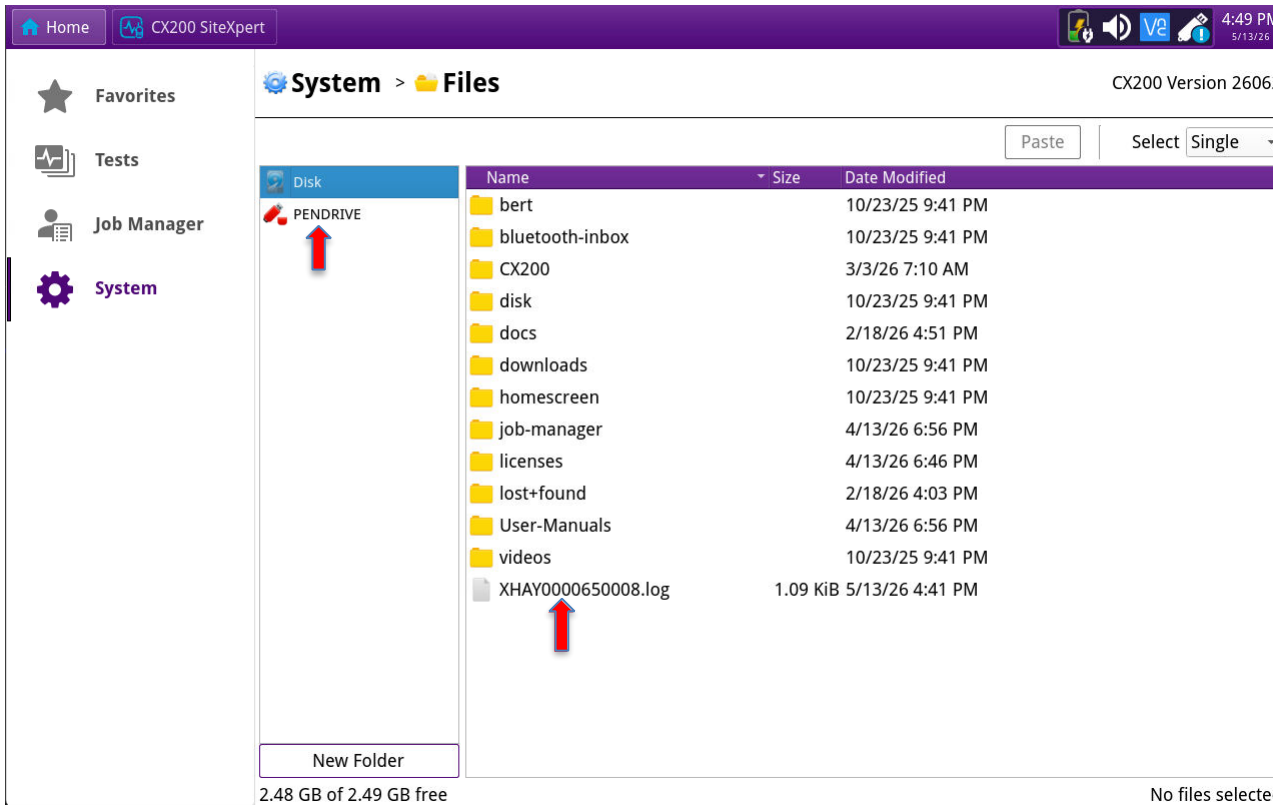
- System > System Info** (CX200 Version 2606)
- Instrument info:**
  - Module Name: CX200
  - Serial Number: WMNM000P2SN031 (22178368-103 Rev 002)
  - Manufacturing Date: 2024/04/03
  - Calibration Date: yyyy/mm/dd
- Base options:**
  - Platform:
    - ✓ ONA-MF-BT (Bluetooth connectivity)
    - ✓ ONA-MF-WIFI (Wi-Fi connectivity)
    - ✓ SSAA (SmartAccess Anywhere)
  - MR
  - ✓ CX200-DMRR (DMR Repeater)
  - ✓ CX200-DNXDN (NXDN)
  - ✓ CX200-DP25P1 (P25 Conventional)
  - ✓ CX200-DP25P2
- Module:**
  - Module Name: ONA-800A-DISPL
  - Serial Number: XMSX0053640035 (8INSTAL05 Rev 005)
  - Manufacturing Date: 2024/09/14
  - Calibration Date: 2024/09/14
- Installed Software:**
  - Platform: 25.2.4 (28 Oct 2025)
  - Autotest Radio Apps: 1.4.3.20260302212505 (02 Mar 2026)
- Buttons:**
  - Reset instrument to defaults
  - Export logs to usb stick
  - Copy system info to file

#### 5. Select “SYSTEM” at top of screen and then select the “FILES” folder.

The screenshot shows the 'System' menu in the CX200 interface. A red arrow points to the 'Files' folder icon, which is the first item in the top row of the menu. The page content includes:

- System** (CX200 Version 2606)
- Files** (indicated by a red arrow)
- Removable Storage**
- Bluetooth**
- Network**
- Power Management**
- Date and Time**
- Region**
- Display**
- Remote**
- Upgrade**
- Test Set Lock**
- Audio**
- System Info**
- StrataSync**
- Video Player**
- Web Browser**

- The LOG file is listed as the serial number.log. With a USB Flash Drive installed, copy this log file to the USB Flash Drive.



- Keep this file available
- System software or Auto-Test application upgrades do not affect calibration or user files, such as screenshots, frequency list, stored setup files.

### Upgrading Software and Auto-Test from the Internet.

- Using an Ethernet cable connected to a network and the internet, connect to the Ethernet port of the CX300.

- On the top toolbar, select "HOME"



- Then "UPGRADE".



- On the upgrade screen, select "NETWORK".

#### Select your upgrade method:

**USB**  
 Upgrade from files stored on a USB flash drive.

**Network**  
 Download upgrade from a web server over the network.

- Type in this Server address: <http://cx200.updatemyunit.net/>

- Select "CONNECT".

Enter the address of the upgrade server: ↓

Server address

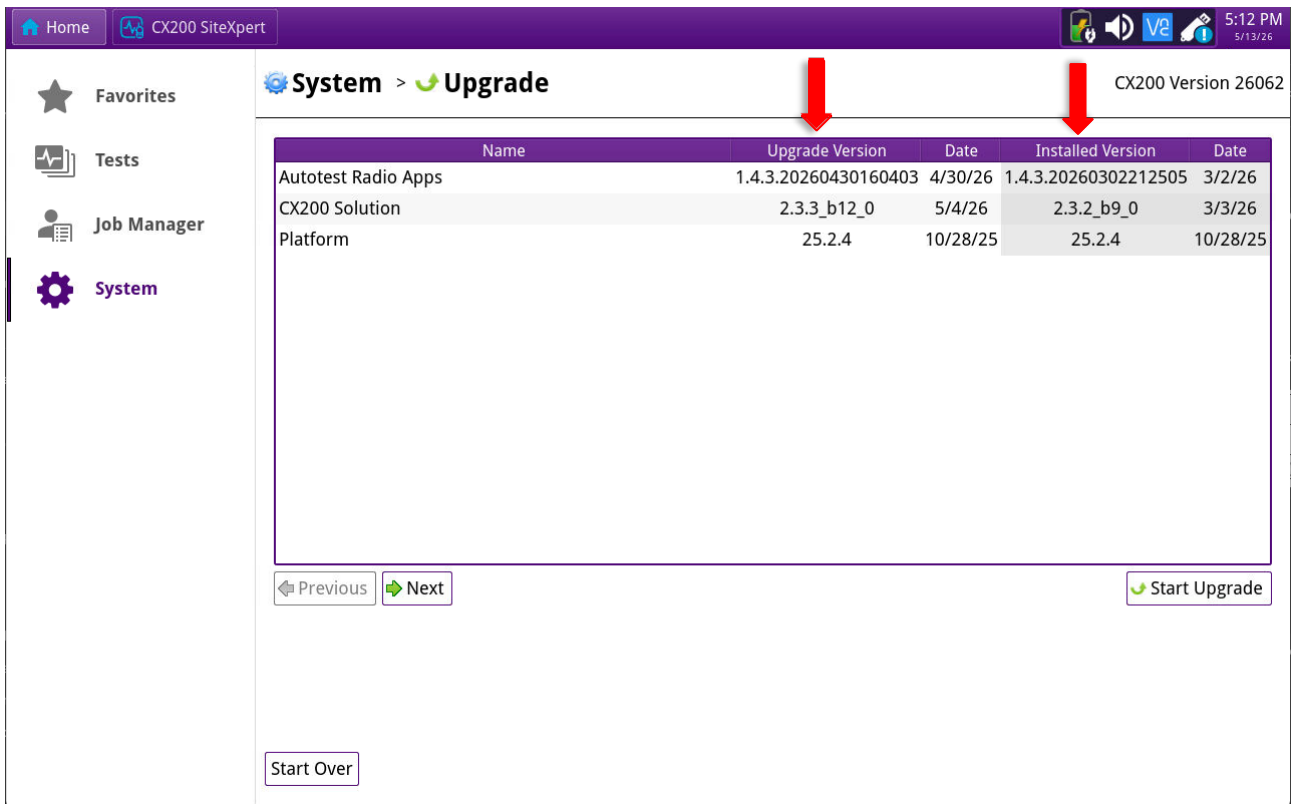
Enter the address of the proxy server, if needed to access upgrade server:

Proxy address  Type

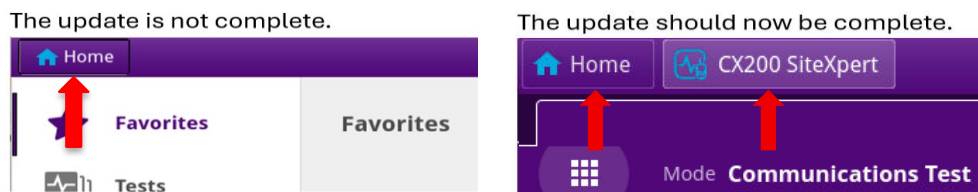
**Connect**  
 Query the server for available upgrades.

↑

- When the version screen comes up, you should see what the upgrade version and the current installed version of software is. If the upgrade version is newer than the installed version, select "START UPGRADE".



- When the "UPGRADE" screen comes up, it will state that the upgrade will close all open applications. When ready to start, click the "OK" button and the upgrade will begin. When complete, the unit will reboot and upgrade is complete.
- If the unit powers up with only the Home tab, the unit is still loading the update. The update is not completed until the CX200 SiteXpert tab appears.



- When unit has rebooted, select "HOME" then "SYSTEM" then "SYSTEM INFO". On the left side at the bottom of the screen is the "Installed Software". Verify it has the updated software version installed.

Installed Software  
**Platform:**  
 25.2.4 (28 Oct 2025)  
**Autotest Radio Apps:**  
 1.4.3.20260430160403 (30 Apr 2026)  
**CX200 Solution:**  
 2.3.3\_b12\_0 (04 May 2026)

- Verify it has the updated software version installed.


## Upgrading Software and Auto-Test by USB

The Software update includes the latest Auto-Test, or the Auto-Test can be updated by itself.

1. Insert a USB Flash Drive (minimum size 4 Gb) that is formatted “FAT32” in one of the USB ports on your computer.
2. Using a computer (recommend using Windows Edge or Google Chrome) connected to the internet, you can go to the website at [CX200 SiteXpert System Software | VIAVI Solutions Inc.](http://CX200 SiteXpert System Software | VIAVI Solutions Inc.) to download the System Software update or on the CX200 Upgrade button, type in this address <http://cx200.updatemyunit.net/> and hit “ENTER”.
3. Go to the “Download Latest FW of CX200”. Click on the flag for the closest regional server you are located in. (Download to a local folder on your computer.)

**\*NOTE:** If the computer protection stops and asks about trusted software, then say “YES” and allow to run.

4. File will start downloading and when complete, run the downloaded file and when asked, select the USB Flash Drive to install the upgrade on. Then click on “OK”.
5. When install is completed, check the flash drive and ensure the upgrade has been installed having the advisor folder on the USB Flash Drive. Remove the USB Flash drive from your computer and insert into one of the USB Ports of the CX200.

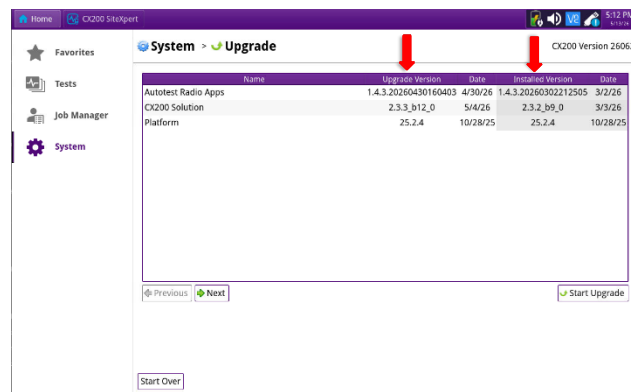
6. On the top toolbar, select “HOME”
7. and then “UPGRADE”. 

### Select your upgrade method:

**USB**  
Upgrade from files stored on a USB flash drive.

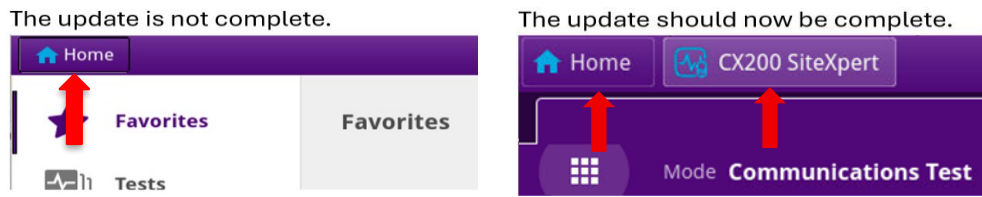
**Network**  
Download upgrade from a web server over the network.

8. On the upgrade screen, select “USB”.
9. When the version screen comes up, you should see what the upgrade version and the current installed version of software is. If the upgrade version is newer than the installed version, select “START UPGRADE”.



10. When the “UPGRADE” screen comes up, it will state that the upgrade will close all open applications. When ready to start, click the “OK” button and the upgrade will begin. When complete the unit will reboot and upgrade is complete.

- If the unit powers up with only the Home tab the unit is still loading the update. The update is not completed until the CX200 ComXpert tab appears.



- When unit has rebooted, Select "HOME" then "SYSTEM" then "SYSTEM INFO". On the left side at the bottom of the screen is the "Installed Software".

- Verify it has the updated software version installed.