

VIAVI

OCETS Calibration

Protect your investment in a VIAVI OCETS by ensuring it is always operating at its best. VIAVI provides multiple OCETS Calibration Service options designed to align with diverse customer needs. In addition to standard Return to Factory calibration, options also exist for VIAVI to go directly onsite to customer locations thereby maximizing the uptime of these valuable assets. Customers can then further select from various Service Levels associated with the reporting detail they require.

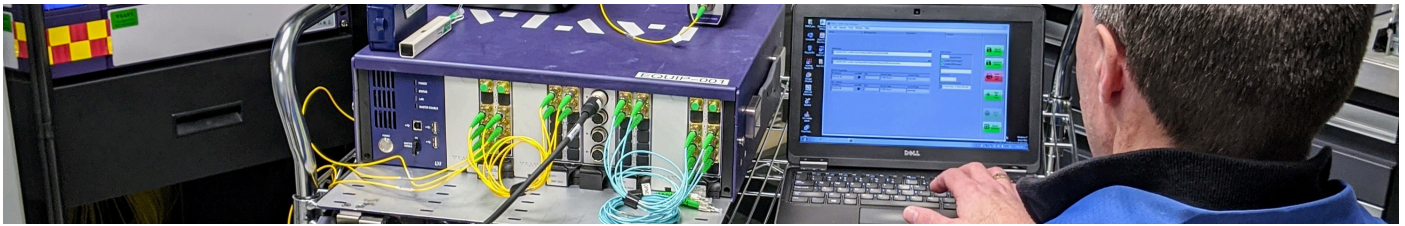
Standards

Instruments are calibrated based on general requirements for the competence of calibration and testing laboratories (ISO/IEC 17025:2005) using applicable VIAVI Solutions procedures, IEC 61280-4-1, IEC 61280-4-2 and IEC 62614 guidance. Results are traceable to French National Standards and NIST which are consistent with the recommendations of the General Conference on Weights and Measures (CGPM), or to standards derived from natural constants, or to standards relying on ratio measurements with self-calibrating technique for their calibration. Calibration procedures are VIAVI Solutions developed to ensure best practices and standards throughout the VIAVI Service Network. Service Reports include document control numbers for processes and procedures.

Overview

OCETS systems are large, heavy and complex pieces of integrated test infrastructure. For this reason, returning systems or portions of systems to the factory for calibration is not always an attractive or even a viable alternative. VIAVI now offers Onsite in addition to Return to Factory options that allow customers to select the offering that works best for their needs.

- Conduct a functional test of the system to verify that vital functions perform as expected
- Inspect and clean the optics and optical connections
- Verify measurement accuracy to traceable standards
- Document findings with a report of observations, measurements and actions
- Update calibration dates and/or provide calibration label noting date of calibration and due date for next calibration (after consultation with customer)
- Perform instrument and module maintenance to extend product lifetime
- Perform software updates



Services

Return to Factory

Return to Factory service is a comprehensive Service option that includes, functional testing, recalibration (if necessary), implementation of necessary engineering changes, software upgrade, calibration sticker/cert and calibration report. This option is available for all currently supported OCETS products, mainframes and modules.

Onsite Verification

For customers that are unable to return their product to VIAVI for service, VIAVI offers an onsite validation service. With this option, a VIAVI technician comes directly to the customer site and will perform functional test and (if necessary) calibration including a cert and calibration sticker.

Onsite Calibration

This offers an upgrade to the level of service received for customers opting for onsite services. With the Onsite Calibration, the customer receives all the same services as the Onsite Verification with the addition of a detailed report that identifies as received/final condition of the product as well as the detailed test results for each product tested.

Onsite Maintenance

In some cases, minor repairs can be done onsite at the customer location during an onsite calibration or verification engagement. This type of repair could include replacement of damaged adapters or ejector handles, and software updates. For cases where products need to be returned to the Factory for repair, VIAVI personnel can help to ensure that returned products have accurate information to ensure efficient processing.

OCETS	Onsite	Factory
Cassette Level		
Laser Source Cassette		
Wavelength Accuracy Verification	●	●
Absolute Power Calibration		●
Absolute Power Verification	●	●
Power Stability Verification		●
OPM Cassette		
Absolute Power Calibration		●
Absolute Power Verification	●	●
Power Linearity Calibration		●
Power Linearity Verification	●	●
Noise Verification		●
System Level		
Power Level at DUT Channel		●
Switch Channel IL Level Verification		●
Switch Channel RL Level Verification		●
IL Linearity Verification	●	●
RL, HiRL Accuracy Verification		●
RL, HiRL Linearity Verification	●	●
HiRL Calibration (for HiRL system only)		●
100h IL Repeatability Verification		●
100h RL Repeatability Verification		●
General		
Provide Calibration Certificate	●	●
Provide Calibration Report	○	●
Apply Calibration Sticker	●	●
Maintenance/Repair		
Inspect Unit for Damage	●	●
Inspect and Clean Connectors	●	●
Confirm Unit Operational	●	●
FW/SW Updates		●
Repair of Non-functional Products		●
Minor Repairs	○	●
Cleaning	○	●

OCETS Service Table

The following products are currently supported. For hardware not on the list contact or to obtain additional information, please contact your local VIAVI Services representative.

Applicable Products
MOCETS-A3055S0-M100-Mxx
MOCETS-A3105S0-M100-Mxx
MOCETS-A3160S0-M100-Mxx
MOCETS-A3210S0-M100-Mxx
MOCETS-A3320S0-M100-Mxx
MOCETS-A3055H0-M100-Mxx
MOCETS-A3105H0-M100-Mxx
MOCETS-A3160H0-M100-Mxx
MOCETS-A3210H0-M100-Mxx
MOCETS-A3320H0-M100-Mxx
MOCETS-A3055S0-M101-Mxx
MOCETS-A3105S0-M101-Mxx
MOCETS-A3160S0-M101-Mxx
MOCETS-A3210S0-M101-Mxx
MOCETS-A3320S0-M101-Mxx



Contact Us **+1 844 GO VIAVI**
(+1 844 468 4284)

To reach the VIAVI office nearest you,
visit [viavisolutions.com/contact](https://www.viavisolutions.com/contact)

© 2020 VIAVI Solutions Inc.
Product specifications and descriptions in this
document are subject to change without notice.
ocetscalibration-ds-ser-nse-ae
30191064 900 0320