

QUICK CARD

Smart Access Anywhere

This Quick Card describes how to use Smart Access Anywhere (SAA) Software for Windows to remotely operate a OneAdvisor 800 and transfer files between the test instrument and PC.

EQUIPMENT REQUIREMENTS

- Personal Computer (PC) running Windows operating system
- OneAdvisor 800 equipped with the following:
 - ✓ Platform software release V4.1.0 or greater
 - ✓ SAA option for Smart Access Anywhere
 - ✓ ONA-MF-WIFI option for remote operation via Wi-Fi
- CAT5e or better cable, for remote operation via the OneAdvisor RJ-45 Ethernet Management Port
- Internet connection from both PC and OneAdvisor or Direct Ethernet/IP connection between PC and OneAdvisor (via LAN or via direct CAT5e cable)

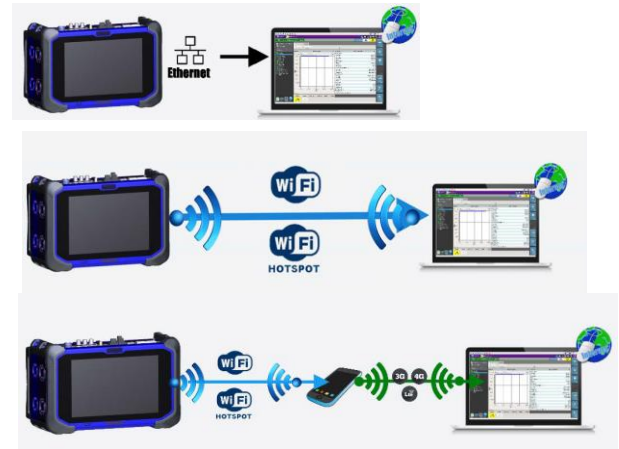


Figure 1: Equipment Requirements

DOWNLOAD AND INSTALL SAA

1. Open an Internet browser on the PC and navigate to the VIAVI Smart Access Anywhere software portal:
<http://smartaccess.updatemyunit.net/>
2. Click on the link under **DOWNLOAD LATEST VERSION FOR WINDOWS** to download the latest Smart Access Anywhere release.
3. Open the downloaded zip file and extract the executable Smart Access Anywhere installation image.
4. Double click on the installation image and follow the on-screen instructions to install the Smart Access Anywhere application.

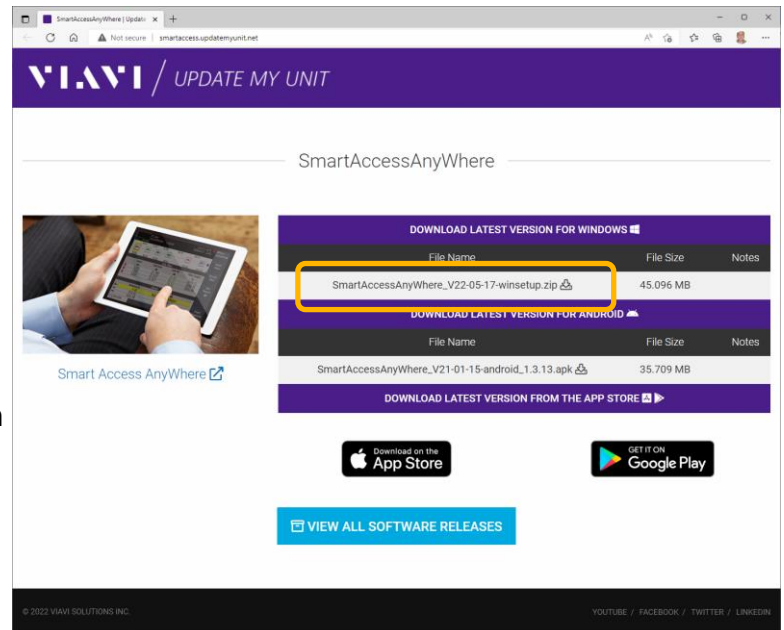










Figure 2: Updatemyunit.net

QUICK CARD

CONFIGURE ONEADVISOR CONNECTIVITY SETTINGS

1. Press the Power button  to turn on the OneAdvisor 800.
2. Tap  to display the Home Screen.
3. Tap the **System** icon  in the Status Bar at the top of the screen to display the **System** menu.
4. Tap on the **Network** icon  to display management network settings.
 - If using the OneAdvisor **Wi-Fi interface** for remote access, tap the **Wi-Fi** icon  on left screen side and tap the **Enable wireless adapter** check box. Select the desired Wi-Fi network from the list and provide login credentials to join the network and obtain an IP address.
 - If using the OneAdvisor **RJ-45 Ethernet Management Port** for remote access, connect CAT5e or better cable between the RJ-45 connector and the router or PC. Tap the **LAN** icon  on left screen side. If using DHCP, set **IP Mode** to **DHCP** and wait until unit obtains an IP address; otherwise set **IP Mode** to **Static** and configure a static IP address.
5. Tap the word **System** in the hyperlink at the top of the screen to return to the **System** menu.
5. Tap the **VNC Remote** icon  to display **Remote** operation settings.
6. Tap on the **Enable VNC access** check box to enable remote access. Optionally tap on the **Require password for VNC access** check box and enter a password in the **Remote access password** text box.
7. To establish a remote connection to the OneAdvisor via the internet, tap on the **Connect** button  under **Smart Access Anywhere** to register with the VIAVI SAA server and obtain the access code. Once the unit is connected, note the **Access code**. The access code must be used when the OneAdvisor is on a private network, such as a Wi-Fi Hotspot or Wireless LAN.

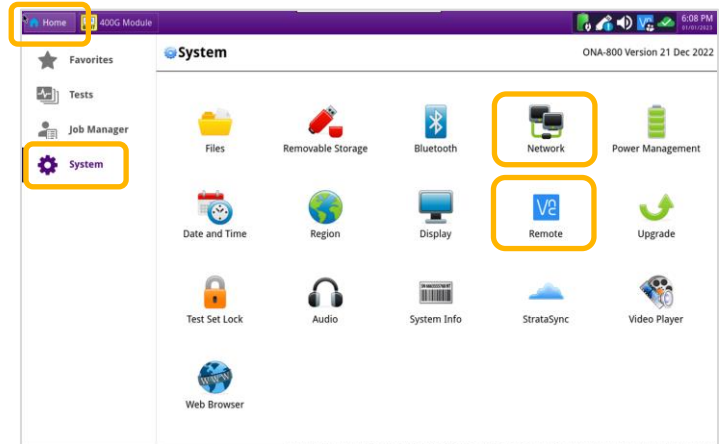


Figure 3: System Menu

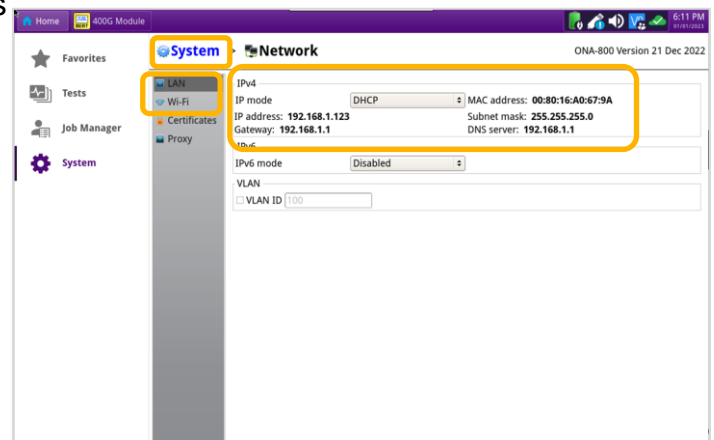


Figure 4: Network Settings

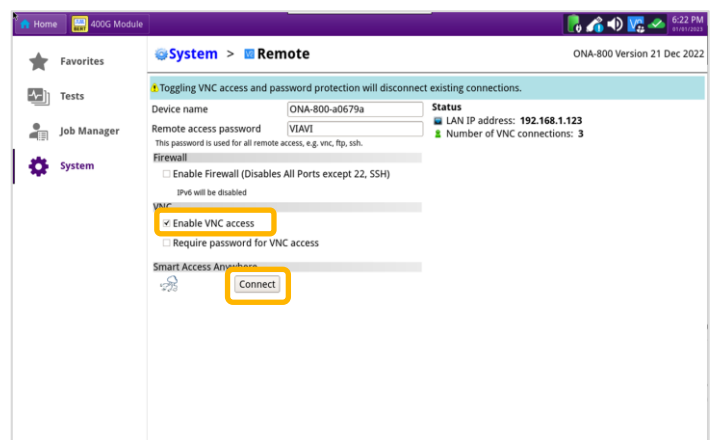
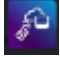
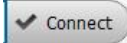







Figure 5: VNC Remote Settings

QUICK CARD

OPERATING THE ONEADVISOR 800 FROM YOUR PC

1. Launch the VIAVI SmartAccessAnywhere application  and enter the OneAdvisor Access Code or IP Address in the text box labeled **“Access code or local IP address”**.
2. Click the Connect button  and wait for connection.
3. Click the **Remote Screen** icon  to gain access to OneAdvisor user interface, where you can configure tests, run tests, or perform any other actions using your mouse and keyboard instead of the touch screen.
4. Click the File Transfer icon. 
5. Navigate to desired folders on the PC and OneAdvisor (/bert/reports for 400G Transport Module reports, /bert/tests for configuration files and profiles, etc.) Note: Use the up arrow  next to the folder name to navigate up a level.
6. Select any configuration files, reports, or other files and use the Upload  or  buttons at the top of the screen to copy the file(s) to/from the OneAdvisor.

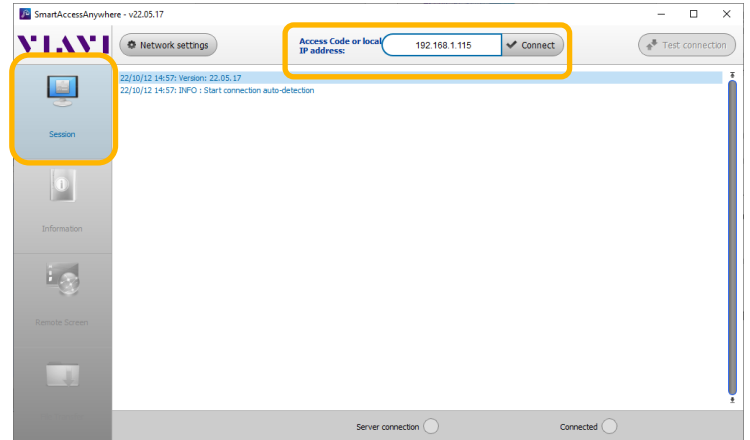


Figure 6: SmartAccessAnywhere Session Screen

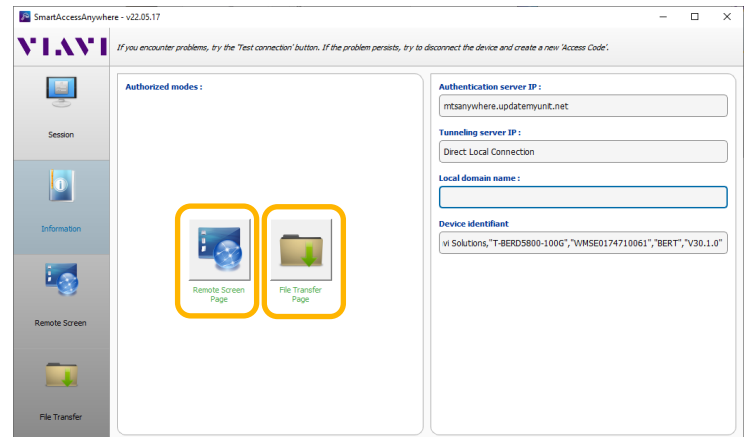


Figure 7: SmartAccessAnywhere Information Screen

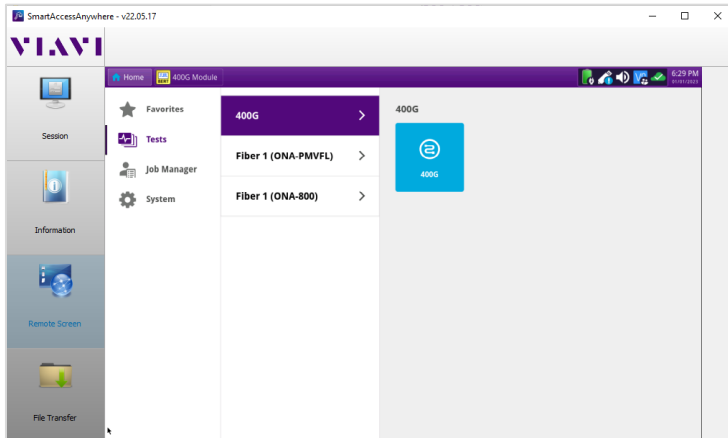


Figure 8: SmartAccessAnywhere Remote Screen Page

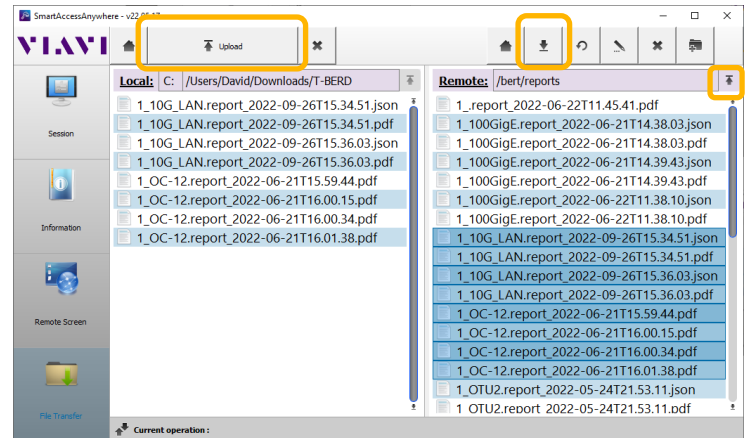


Figure 9: SmartAccessAnywhere File Transfer Page