

# Viavi OneAdvisor ONA-800 Software Update Instructions



May 1, 2020

## Table of Contents

Scope.....	2
1. Network Upgrade .....	2
2. USB Upgrade.....	8
3. Stratasync Upgrade.....	13

## Scope


The ONA-800 platform base software includes software for the ONA-800 base and all supported modules.

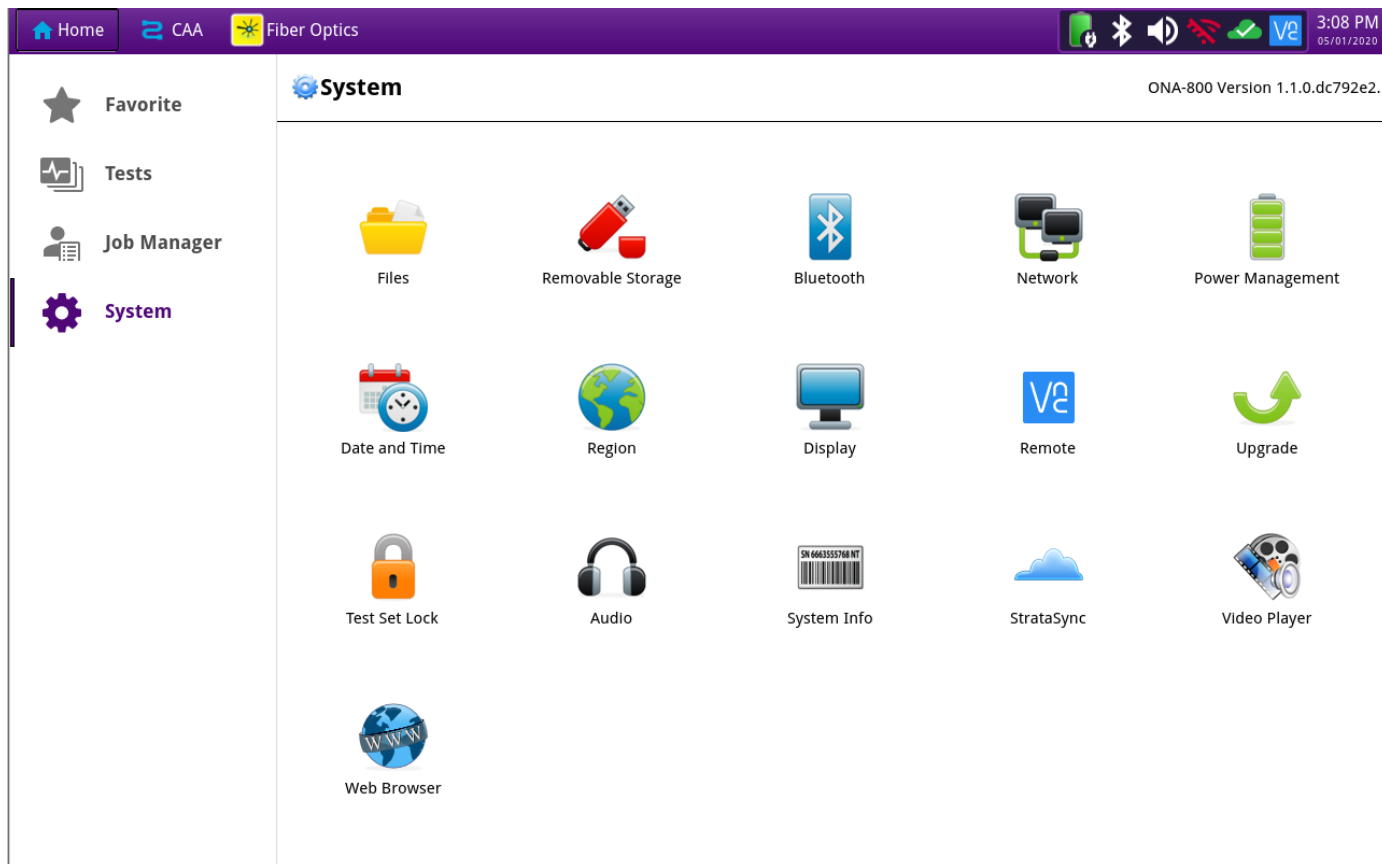
There are three methods to update ONA-800 software:

1. Network upgrade - Use this method to update your ONA-800 via an Internet connection.
2. USB upgrade - Use this method to update your ONA-800 with a USB thumb drive.
3. StrataSync upgrade - Use this method if your ONA-800 is managed using Viavi's StrataSync Asset Management system and your company has elected to deploy software via this method.

The ONA must be connected to AC Power, regardless of update method. Please note that network upgrades are NOT supported over WiFi.

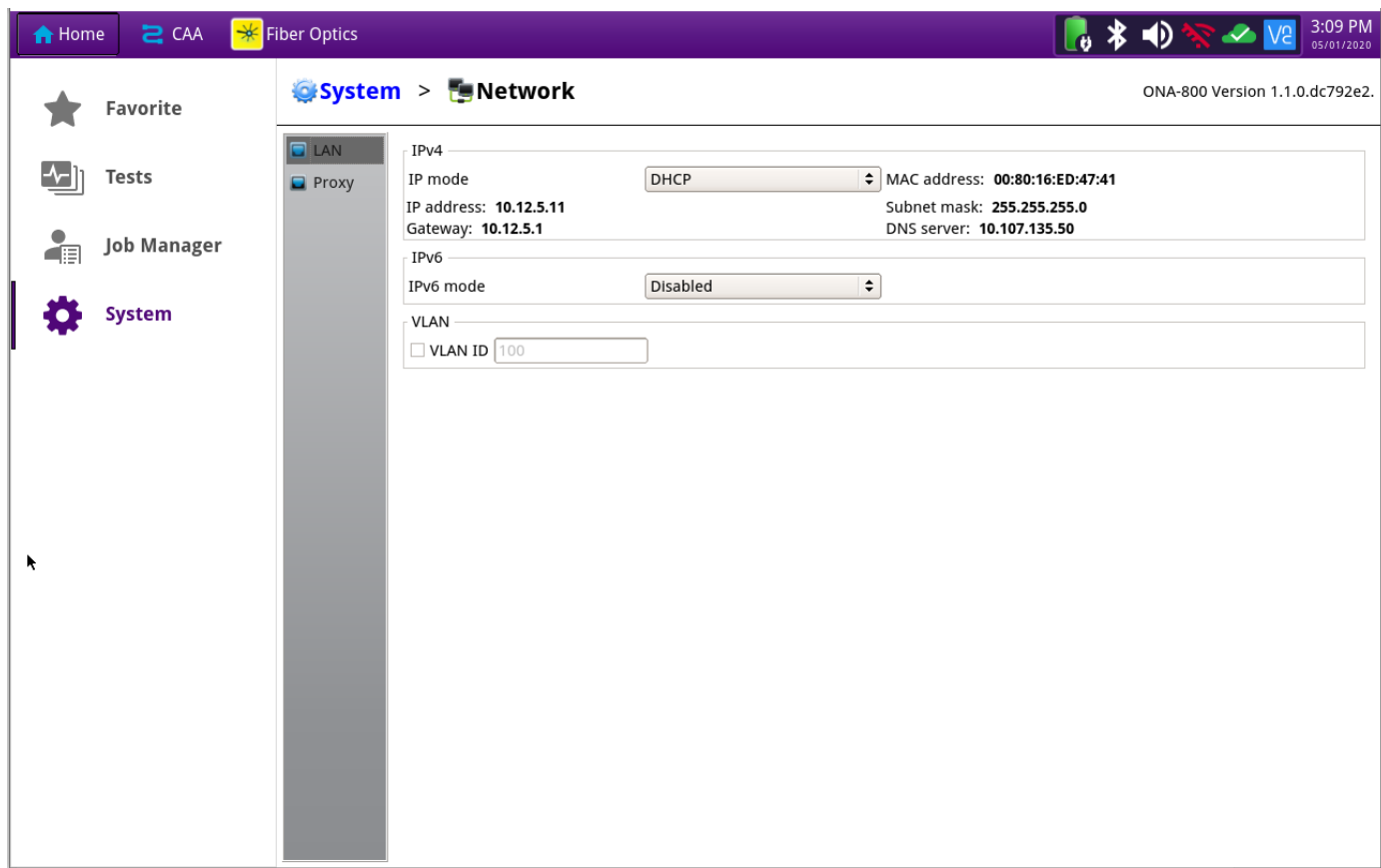
## 1. Network Upgrade


<i>Step</i>	<i>Action</i>	<i>Details</i>
1.	Power On	Press and release the ON/OFF button to turn on the ONA-800.
2.	AC Power	Connect the AC power adapter to the power connector on the top of the mainframe.
3.	LAN Connection	Connect the Ethernet Management Port, on the top of the mainframe, to a network connection with internet access, using CAT 5E or better cable.
4.	System	Press the System icon,  , at the left of the HOME screen, to display the System Menu.



## 5. Network Settings


Press the Network icon, **Network**, to display LAN Settings. Set **IP Mode** to “**DHCP**” for automatic IP address assignment or “**Static**” for manual input. If using a static address, be sure to configure the DNS server for an accurate address or the upgrade will fail to locate the upgrade server.

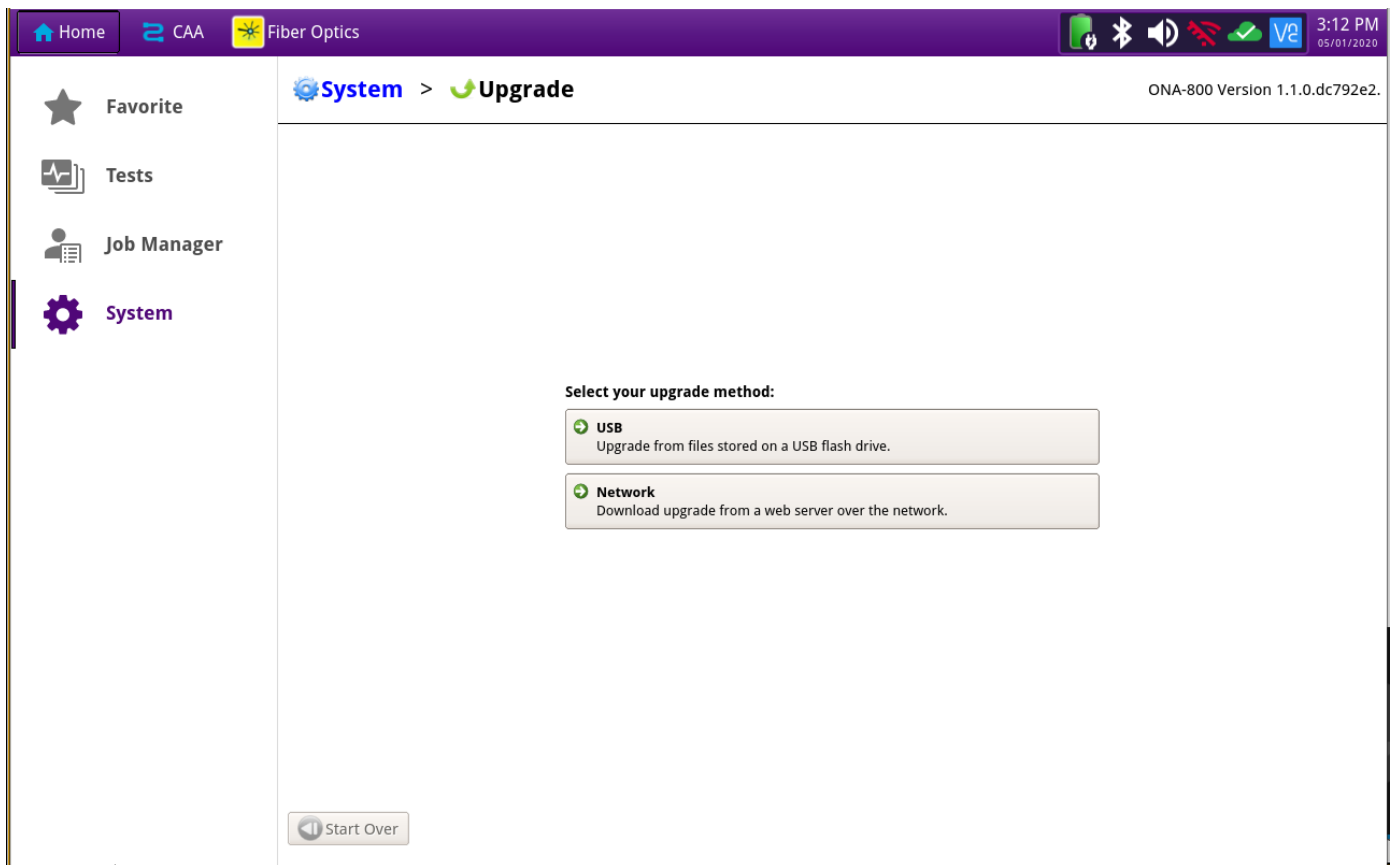


After configuring LAN settings, press the System icon, , to redisplay the System Menu.


## 6. Upgrade

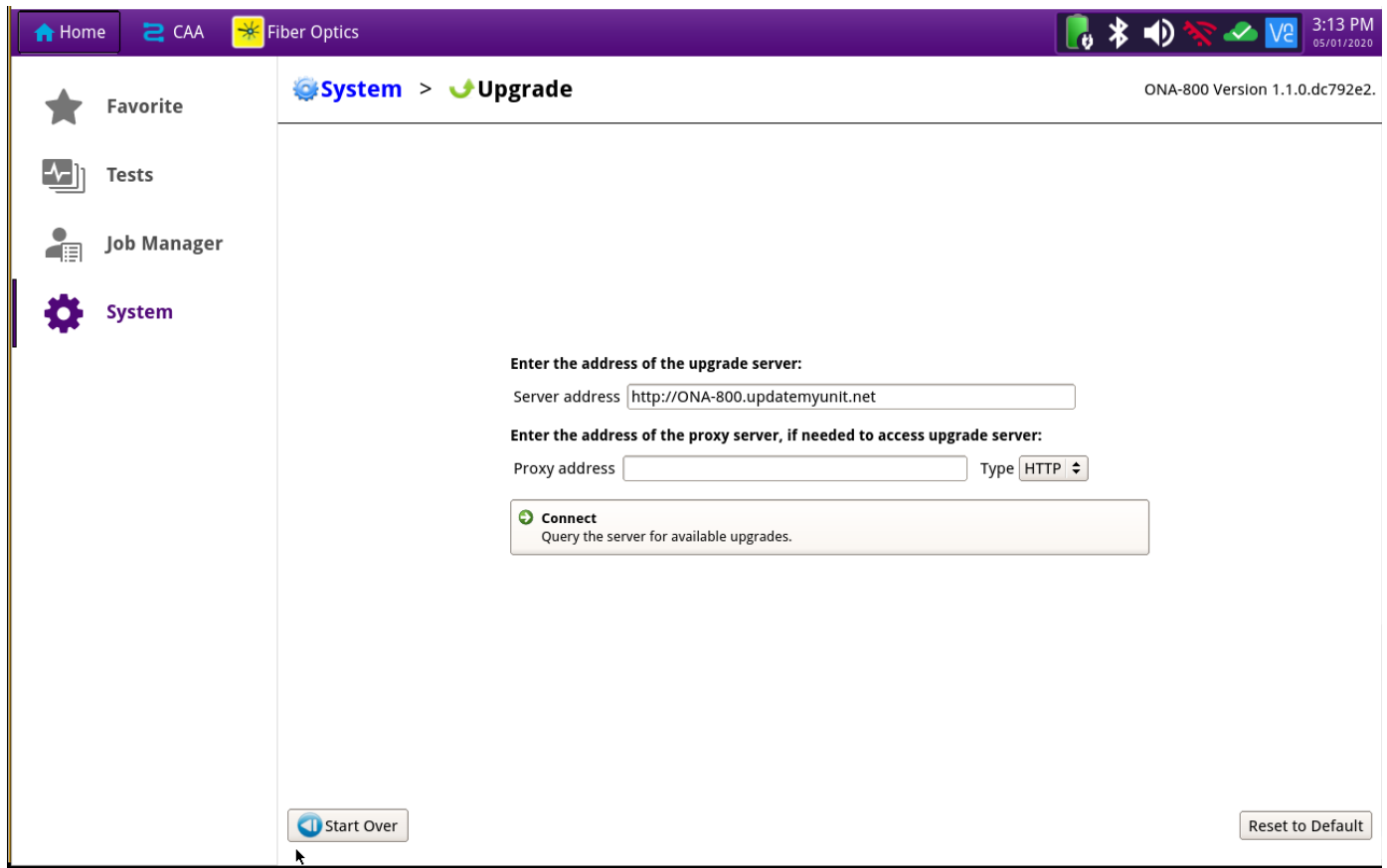


Press the Upgrade icon, , to display upgrade methods.



## 7. Network Upgrade

Press  to display upgrade settings. Press Reset to Default to ensure the server address name is correct.



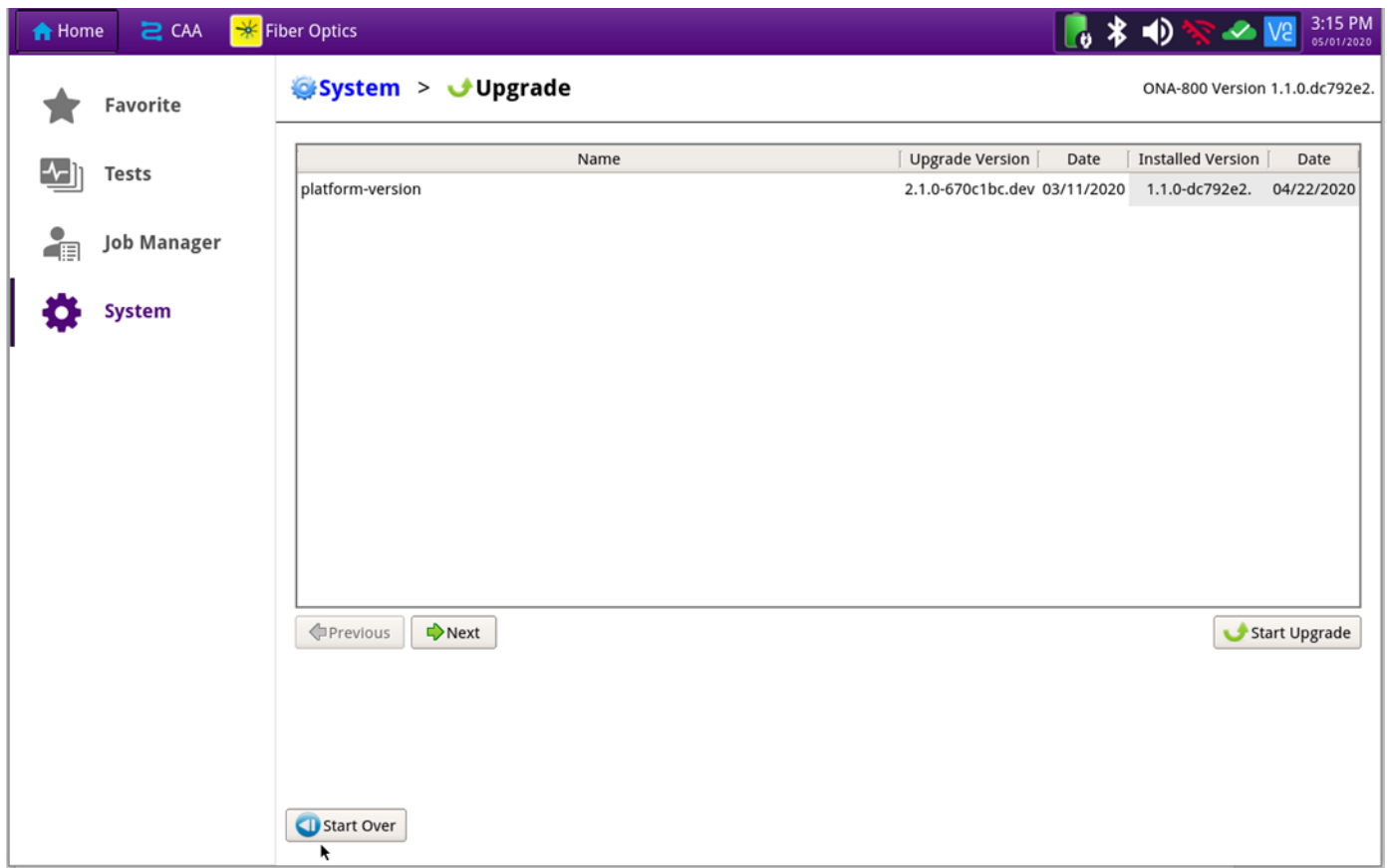
8. Connect

Press



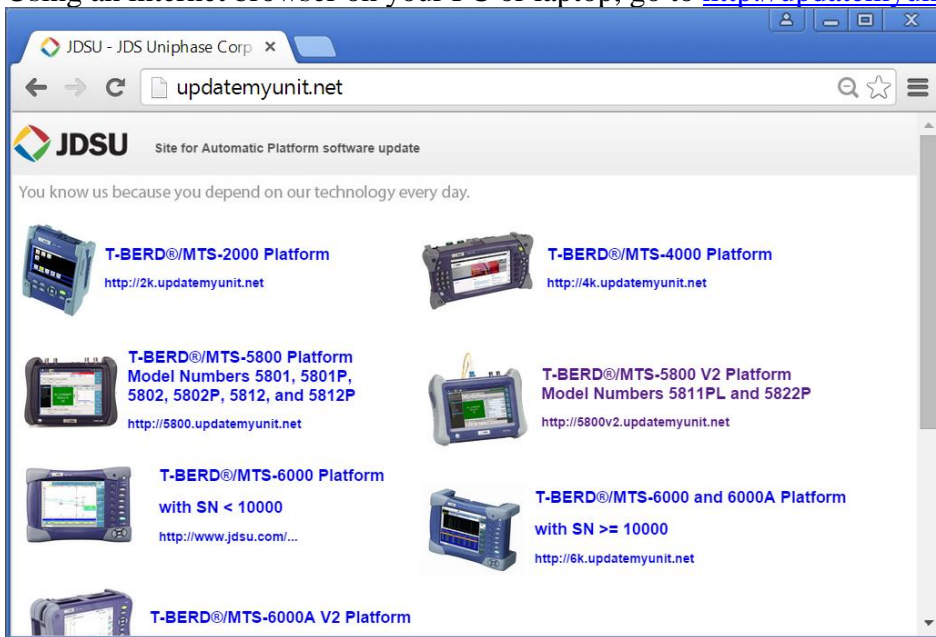



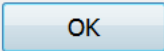
to show

the upgrade versions available at [upgrademyunit.net](http://upgrademyunit.net).

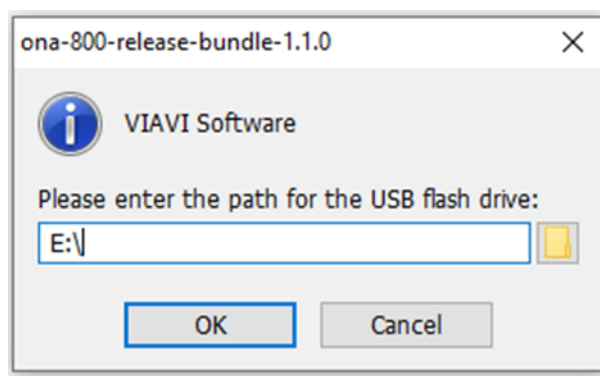



9. Start Upgrade Press , and press  to initiate the upgrade.

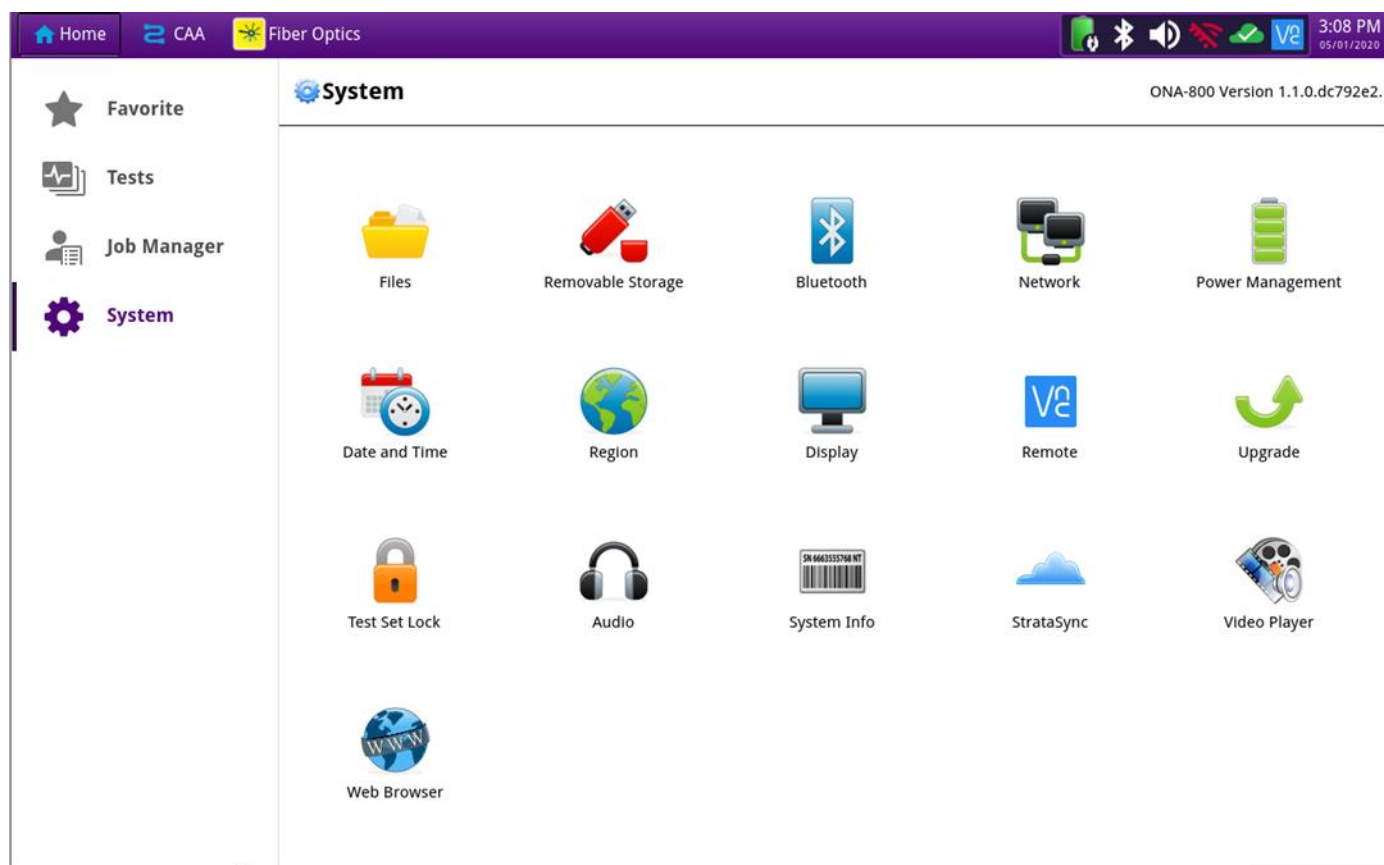
## 2. USB Upgrade

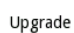
Step	Action	Details
1.	Updatemyunit.net	<p>Using an internet browser on your PC or laptop, go to <a href="http://updatemyunit.net/">http://updatemyunit.net/</a></p>  <p>The screenshot shows the JDSU Updatemyunit.net website. It lists several platforms for automatic software updates, each with a corresponding image of the device and a URL to the update page. The platforms include T-BERD MTS-2000, T-BERD MTS-4000, T-BERD MTS-5800 (with various model numbers), T-BERD MTS-5800 V2, T-BERD MTS-6000 (with SN &lt; 10000), T-BERD MTS-6000 and 6000A (with SN &gt;= 10000), and T-BERD MTS-6000A V2. There is also a section for the OneAdvisor-800 Platform.</p>
2.	ONA-800	<p>Click on the  to display the OneAdvisor ONA-800 upgrade page.</p>
3.	Download	<p>Click on the icon for the desired server to start the download from that server. There are icons for three servers: EMEA, NORTH AMERICA or APAC server. For example, North America . Click  to download the current software revision from that server, if prompted. Do NOT save the download directly to the USB stick. Save to your PC and wait for the download to complete.</p>
4.	USB Stick	Insert a USB thumb drive into the USB port on your PC or laptop.
5.	Extract	<p>Open and run the downloaded file, enter the path of the USB stick, and press  to extract files.</p>

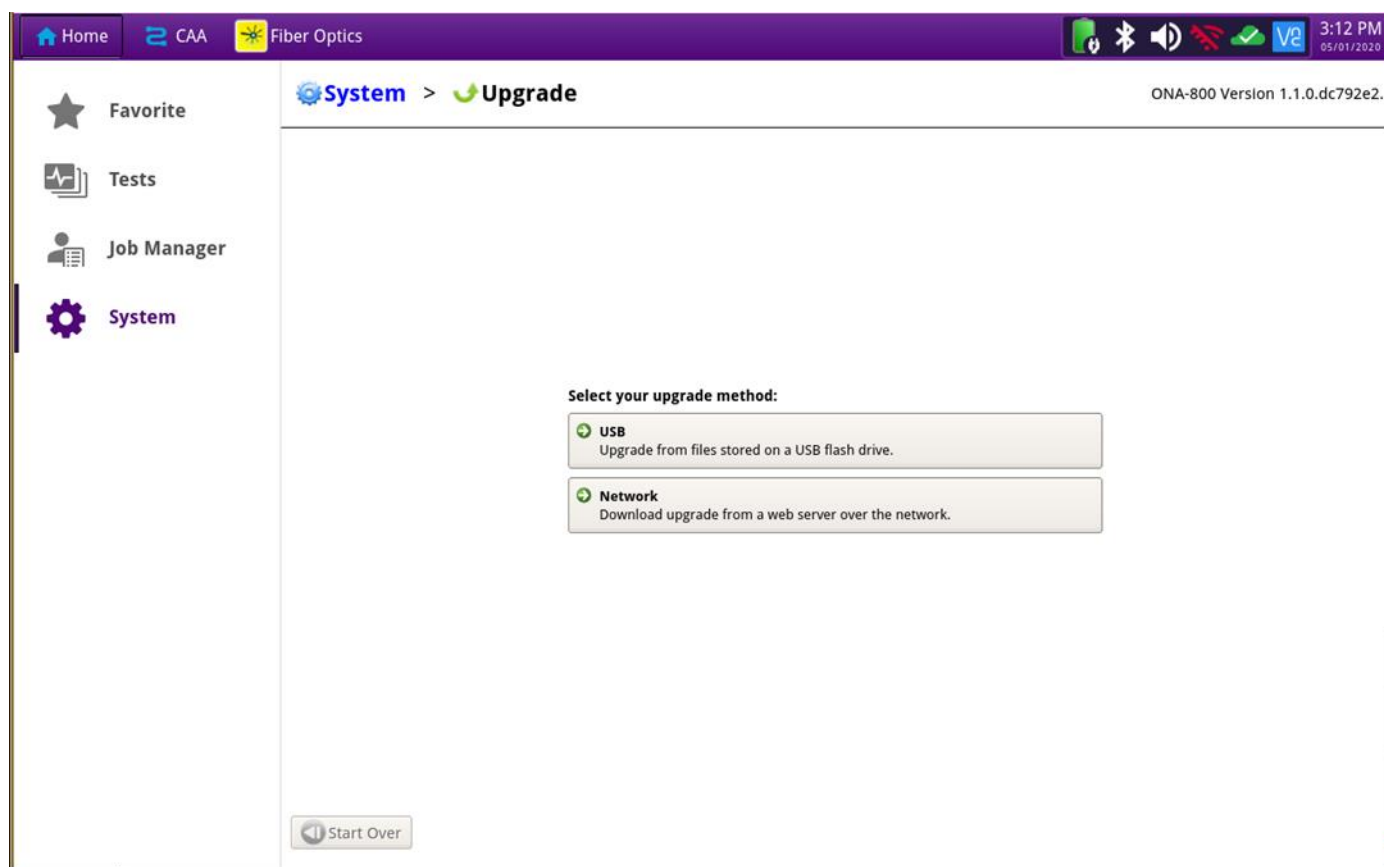




6. Eject                      Once the extract has completed, safely eject the USB drive from your PC or Laptop.
7. Power on ONA            Press and release the ON/OFF button to turn on the ONA-800.
8. AC Power                Connect the AC power adapter to the power connector on the top of the ONA-800 mainframe.
9. USB                      Connect the USB Thumb Drive to one of the USB ports on the ONA-800 mainframe. An 8GB or smaller drive is recommended.
10. System                Press the System icon, , at the left of the HOME screen, to display the System Menu.



11. Upgrade Press the Upgrade icon, , to display upgrade methods.



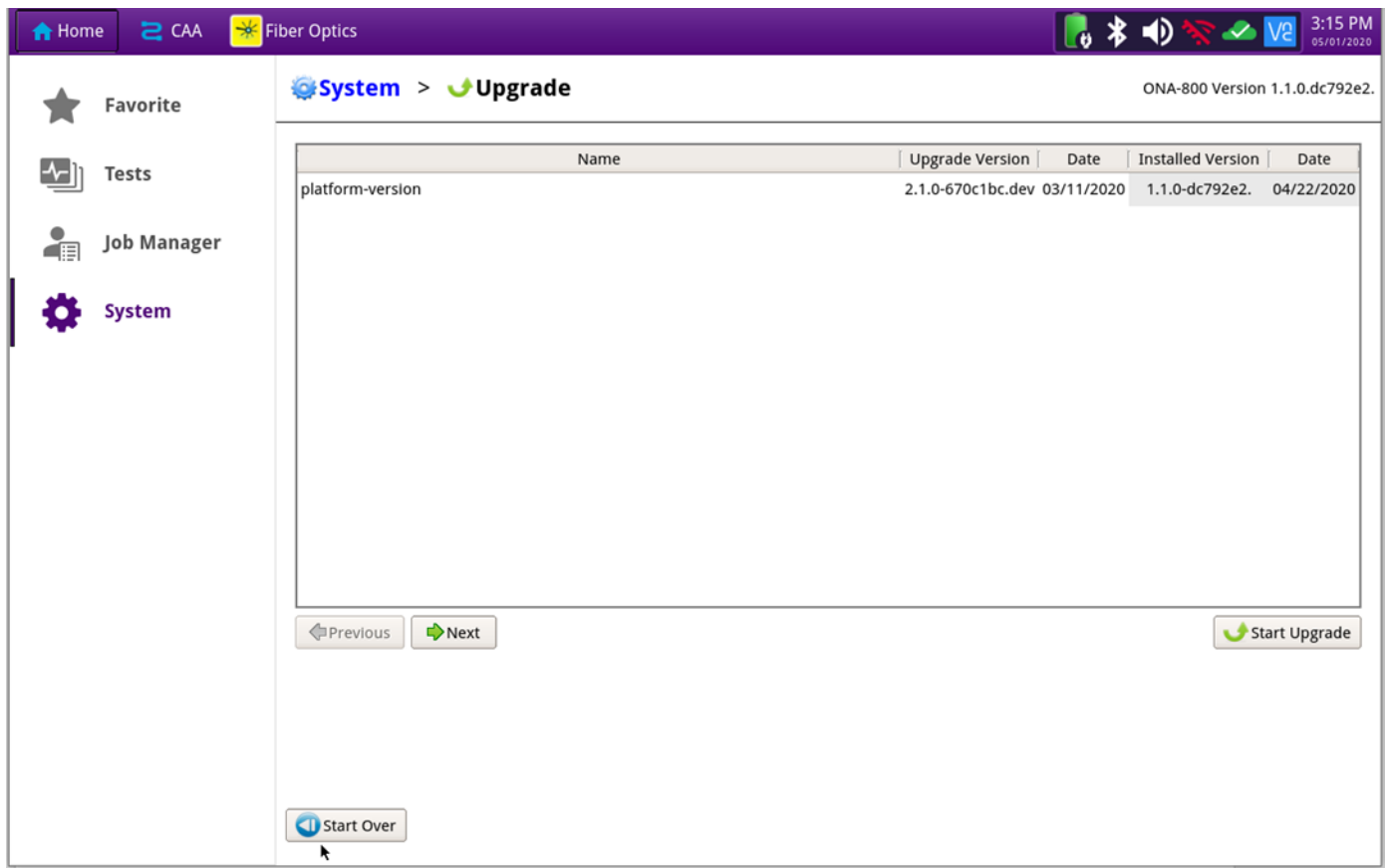
## 12. Select USB

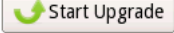

Press




available on the USB stick.

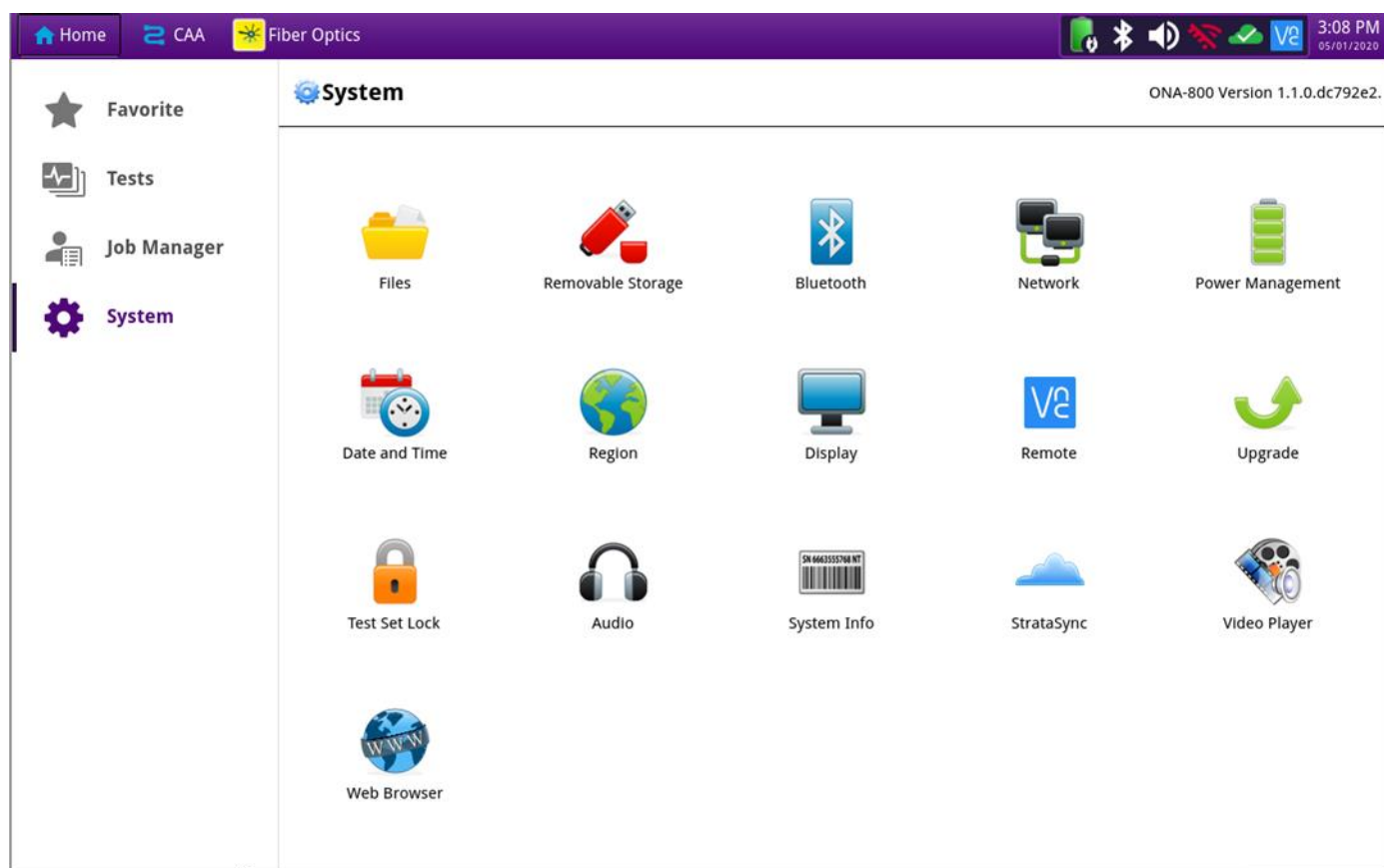
to display upgrade versions



13. Start Upgrade      Press . Press  to initiate the upgrade.


### 3. StrataSync

Step	Action	Details
1.	Power On	Press and release the ON/OFF button to turn on the ONA-800.
2.	AC Power	Connect the AC power adapter to the power connector on the top of the ONA-800.
3.	LAN Connection	Connect the Ethernet Management Port on the top of ONA-800 to a network connection with internet access, using CAT 5E or better cable.
4.	System	Press the System icon,  , at the left of the HOME screen, to display the System Menu.

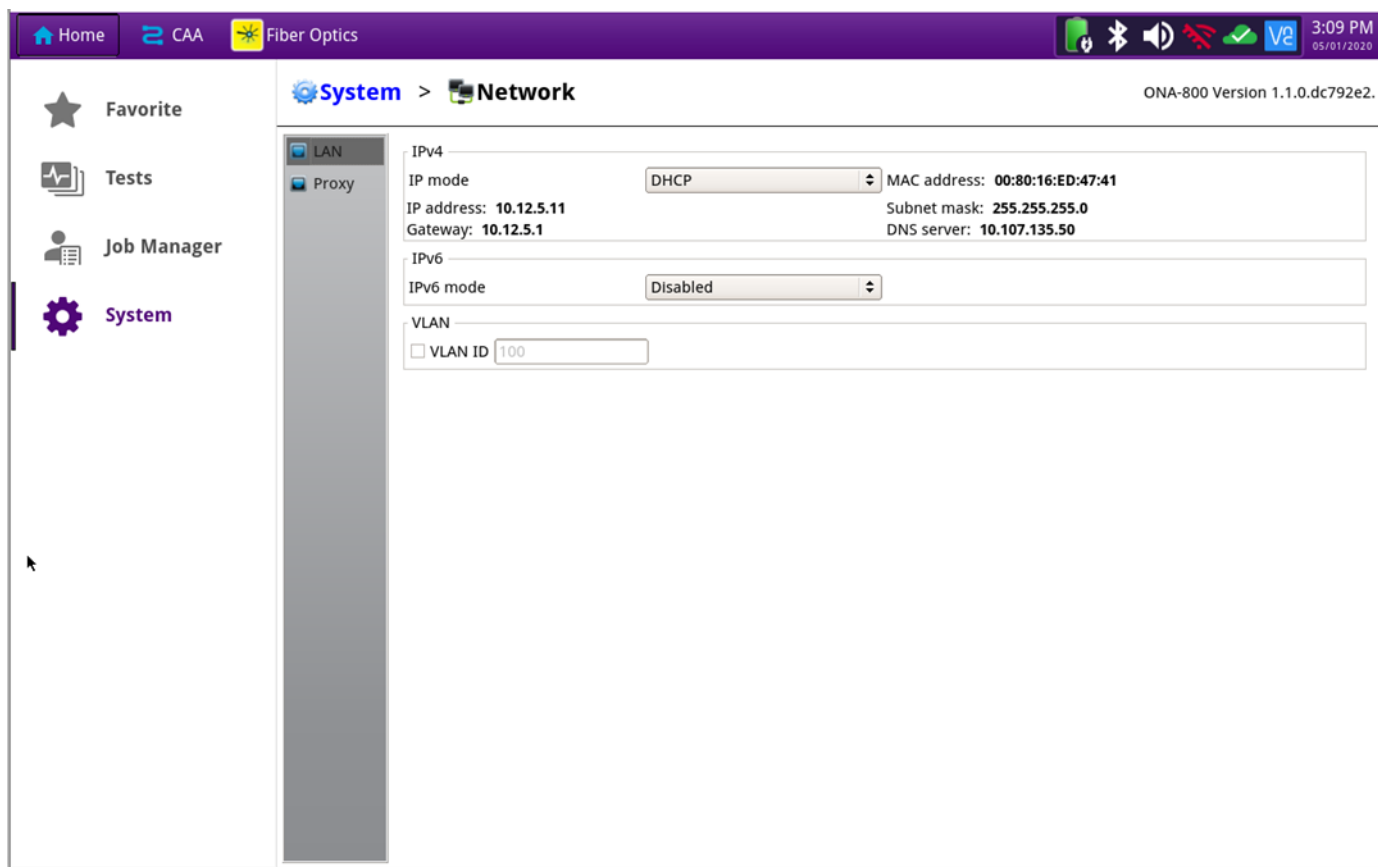




## 5. Network Settings

Press the Network icon, , to display LAN Settings. Set **IP Mode** to “**DHCP**” for automatic IP address assignment or “**Static**” for manual input.


If configuring a static address, be sure to include an accurate DNS address or the unit will fail to locate the StrataSync server.

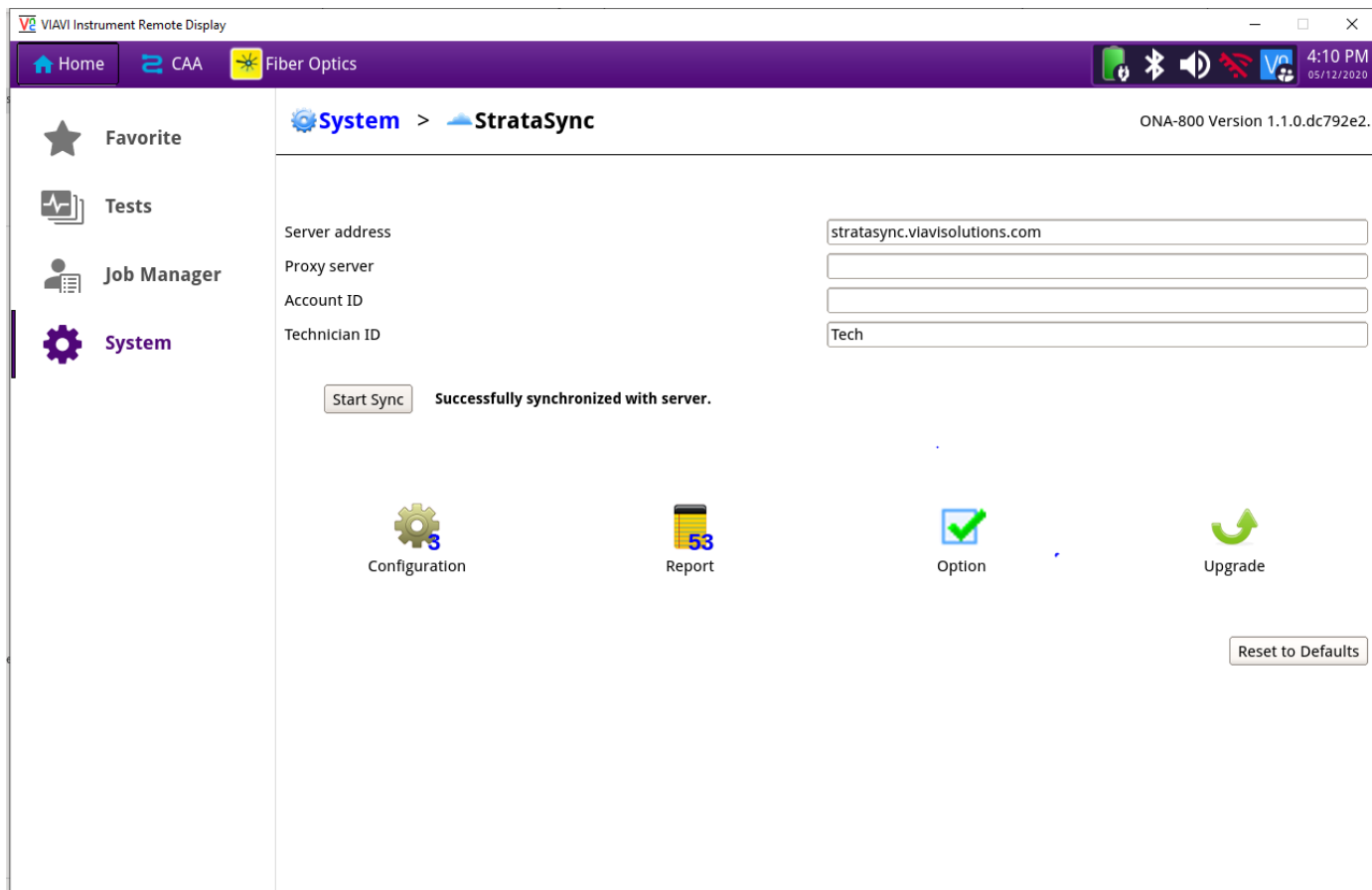


After configuring LAN settings, press the System icon, , to redisplay the System Menu.




## 6. StrataSync

Press the StrataSync icon, , to display StrataSync Settings. Ensure that **Account ID** and **Technician ID** match those of your StrataSync account.



## 7. Sync

Press  to sync your ONA-800 and initiate upgrades that have been assigned by your company's StrataSync Administrator.