

Quick Card

T-BERD[®]/MTS-2000 Modular Test Set Updating Software via Ethernet

This quick card describes how to upgrade the T-BERD/MTS-2000 to the latest software revision using a wired LAN connection with internet access. **Note: Software may not be updated via Wireless LAN or Mobile hotspots.**


Equipment Requirements:

- T-BERD/MTS-2000
- Wired Internet Connection
- CAT5E or better cable.



Figure 1: Equipment Requirements

Connect to Internet:

1. Plug the T-BERD/MTS-2000 test set into AC power. You cannot update the software while running on battery.
2. Press the **Power button**  to turn on the unit.
3. Press the **Home** hard key to display the Main Screen.
4. Using CAT5E or better cabling, connect the Ethernet management port on the top side of the unit to a LAN port that provides Internet access.

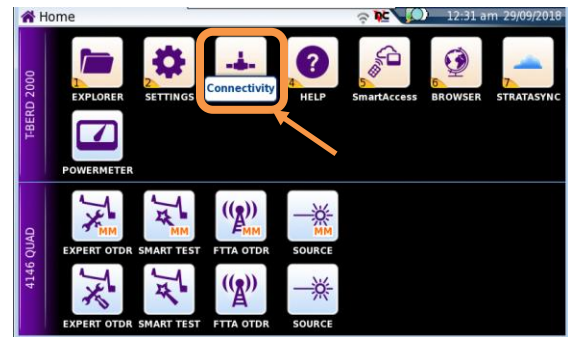



Figure 2: T-BERD/MTS-2000 Home Screen

5. Tap the **Connectivity** icon  to show the Connectivity menu.

6. Tap the **Ethernet** icon  to configure the connection.

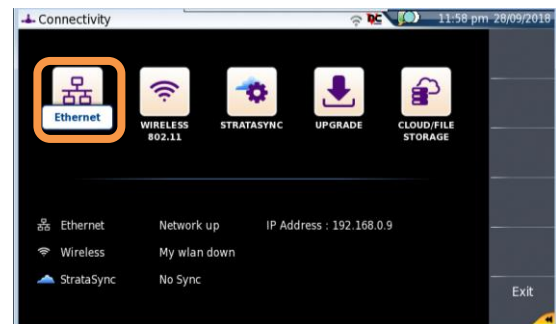


Figure 3: Connectivity Settings

7. Tap **Mode** on the left screen side. If using DHCP, select **Dynamic** mode and wait until unit obtains an IP address; otherwise select **Config 1**, **Config 2**, **Config 3**, or **Config 4** and configure a static IP address.

8. Tap the **Exit** soft key to return to the **Connectivity** screen.

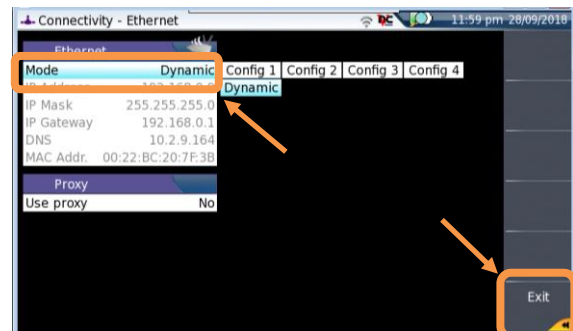



Figure 4: Connectivity-Ethernet settings

Upgrade Test Set:

1. Tap the **Upgrade** icon  to show the Software Upgrade screen.
2. Verify that the **Address Type** option is **Server name**, and the **Server Name** option is **2k.updatemyunit.net**.

3. Tap the **Software Upgrade** soft key .

4. Tap the **Upgrade via Ethernet** soft key .

5. A window will appear to verify that the server address (**2k.updatemyunit.net**) is correct. Tap **Continue**.

6. The screen will show currently installed and Upgrade software versions.

7. Tap the **Confirm this Choice** soft key .

8. Follow screen prompts to complete the software upgrade.

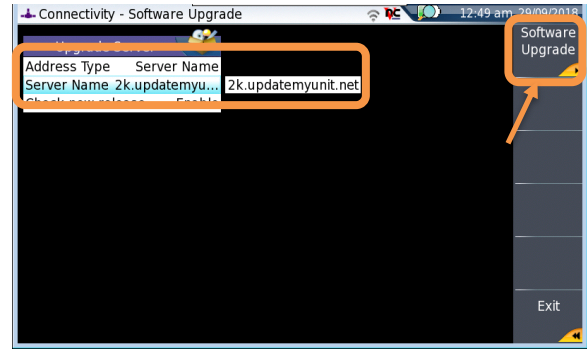


Figure 5: Connectivity-Software Upgrade



Figure 6: Software Version Information

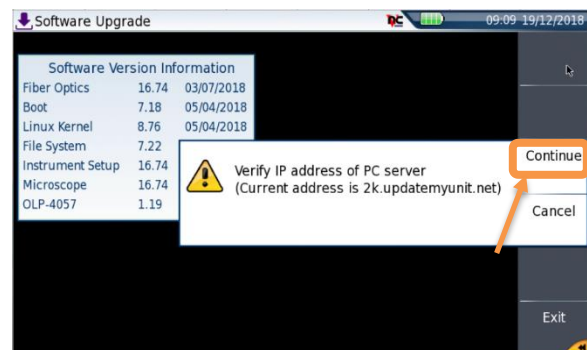


Figure 7: Verify prompt



Figure 8: Upgrade Version Information