

Quick Card

T-BERD[®]/MTS-2000 Modular Test Set Updating Software via USB

This quick card describes how to upgrade the T-BERD/MTS-2000 software using a USB Flash Drive.

Equipment Requirements:

- Laptop or Personal Computer (PC) with Internet Access
- 4GB to 16GB USB Flash Drive



Figure 1: Equipment Requirements

Format USB Flash Drive:



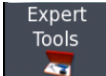


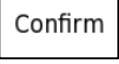
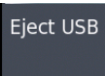
1. Press the Power button  to turn on the test set.
2. Tap the **SETTINGS** icon  in the **Home Screen** to access **System Settings**.
3. Insert the USB Flash Drive into a USB port on the top of the T-BERD/MTS-2000 test set.
4. Tap the **Expert Tools** softkey .
5. Tap  to display USB softkeys.
6. Tap the **Usbflash** softkey  and  to format the USB Flash Drive.
7. Tap the **Eject USB** softkey  and remove the formatted USB Flash Drive from the USB port of the test set.



Figure 2: T-BERD/MTS-2000 Home Screen

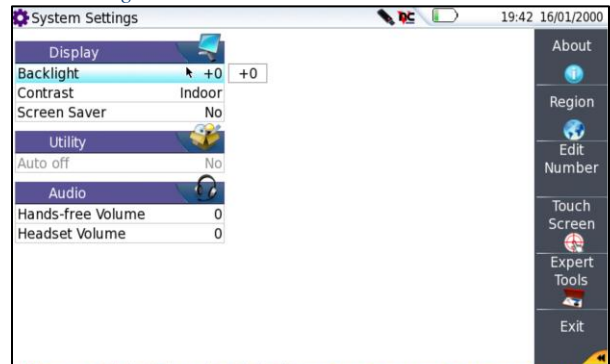


Figure 3: System Settings



Figure 4: System Settings, Media Utilities

Download archive and extract to USB Flash Drive:

1. Insert the formatted USB Flash Drive into a USB port on the Laptop or PC.
2. On the Laptop or PC, open the Internet browser and navigate to the T-BERD/MTS-2000 software update portal: <http://2k.updatemyunit.net/>.

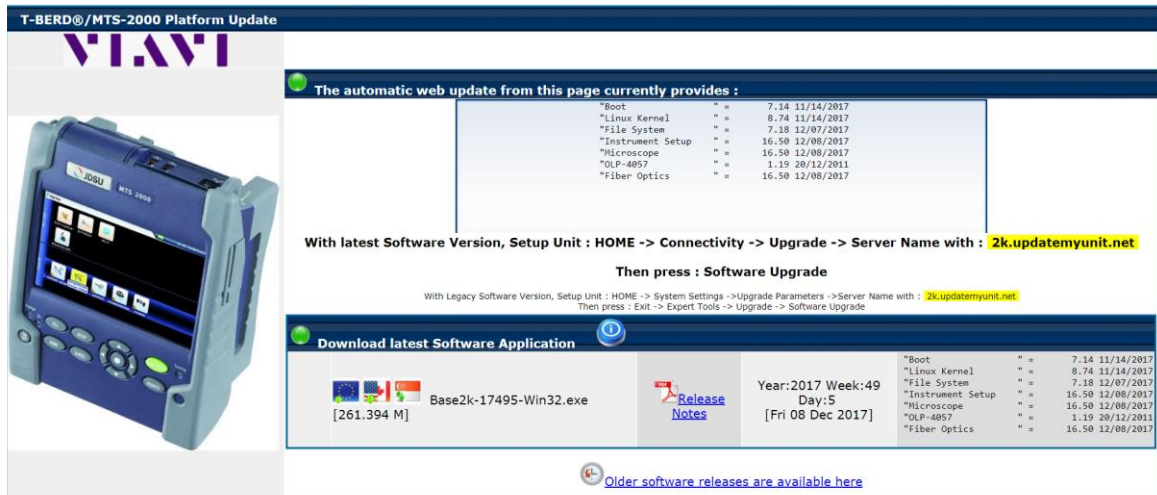


Figure 5: Updatemyunit.net Software Update Portal

3. Click on a Flag icon to download and run platform software from the nearest server:

-  European Server
-  North America Server
-  Singapore Server

4. Enter or browse to the path of the USB Stick and press the **OK** button to extract files to the USB Flash Drive.

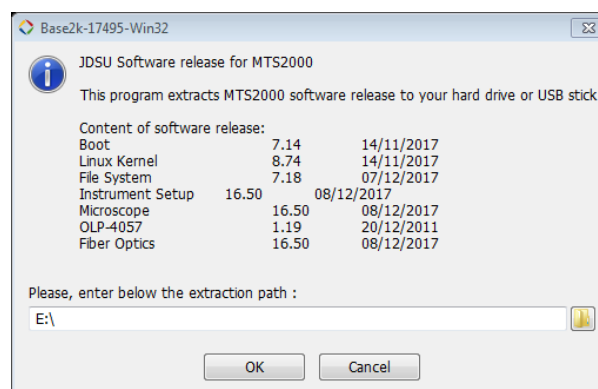


Figure 6: Extracting the Platform Software

5. Eject and remove the USB Flash Drive from the Laptop or Personal Computer.

Upgrade Test Set:

1. Insert the USB Flash Drive into a USB port on the top of the T-BERD/MTS test set.
2. Plug the T-BERD/MTS test set into AC power. You cannot update the software while running on battery.
3. Press the **Home** hard key to display the Main Screen.

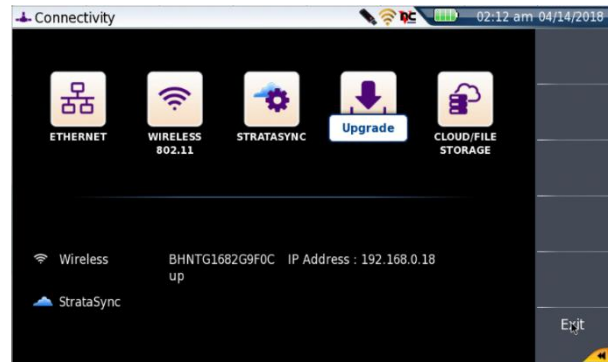




Figure 7: Connectivity Menu

4. Tap the **Connectivity** icon  in the **Home Screen**.

5. Tap the **UPGRADE** Icon  to show the Software Upgrade screen.

6. Tap the **Software Upgrade** soft key .

7. Tap the **Upgrade from USB** soft key .

8. Tap .

9. Tap the **Confirm this Choice** soft key .

10. Follow screen prompts to complete the software upgrade.

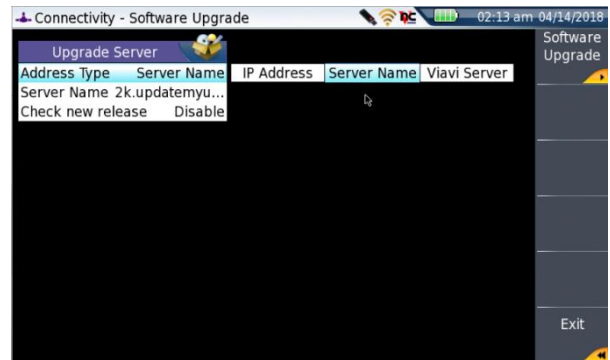


Figure 8: Software Upgrade screen