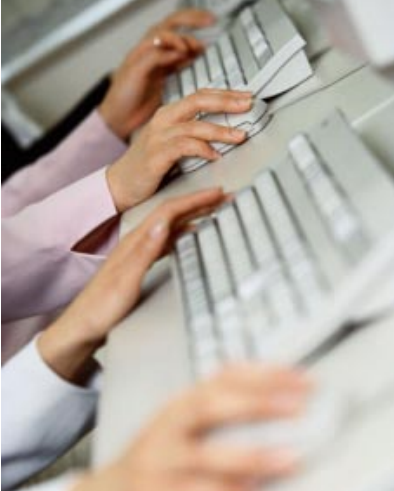


## QoSExecutive



### Benefits

- Reduces operating costs by sharing service monitoring, testing and reporting with more users or operational groups
- Increases customer satisfaction by reducing the time required to detect customer-impacting problems
- Increases operator visibility of service quality by providing network-wide, real-time reporting of measurements and key performance indicators (KPIs)
- Improves consistency in customer experience by performing a common set of tests throughout the entire network footprint
- Reduces the time and risk to install or modify network infrastructure by providing extensive recursive testing capability
- Provides service quality baseline to measure impact of network changes and upgrades
- Increased revenue and reduced churn through positive customer satisfaction

### Key Features

- Standardized views and reports for assessment of test results and KPI
- Real-time views and reports with service-specific measurements and Key Performance Indicators (KPIs)
- Centralized assignment of capabilities, like probe access, test plan creation and data export on a per user basis
- Central management, storage and version control of all RCATS<sup>®</sup> test profiles
- Real-time scheduler provides information about the status of test plans, and allows for viewing results of tests already completed
- Information views based on user-defined geographic areas or service view
- Exception alerts provides e-mail notification when test results exceed a pre-defined threshold
- Resource load-balancing – calculates and presents load on each probe based on all tests currently scheduled, and assigns tests automatically to best utilize available resources
- Export to Excel on a per-service basis utilizing pre-defined SQL queries
- Multi-user Web portal to access all RCATS<sup>®</sup> reports and control all RCATS<sup>®</sup> resources, including RTPs, QoSManagers, customer HLRs, and their associated test profiles
- Secure access and resource control via user groups, user names and passwords
- Distributed architecture scales across hundreds of geographically dispersed locations

The RCATS<sup>®</sup> QoSExecutive enables wireless service providers to assess in real-time the quality and performance experienced by end users for voice, messaging and data services. The information about the customer experience enables the service provider to deliver the quality of service their customers expect.

The QoSExecutive provides the tools to manage the configuration, scheduling and results of all service validation testing performed by the RCATS<sup>®</sup> solution. QoSExecutive allows users to view and monitor the execution of tests in real-time as they occur. QoSExecutive consists of a web-based management console, a SQL database and reporting tools to manage user access, and to manage and monitor hundreds of Remote Test Probes (RTPs) and their associated QoSManagers.

The QoSExecutive is part of the patented JDSU RCATS<sup>®</sup> solution, which enables automated testing, centralized management and aggregated reporting for large numbers of deployed probes. The solution allows wireless operators to access real-time, network-wide performance and availability information, enabling them to use this information to increase service quality, increase revenue and reduce costs.

Wireless operators face enormous pressure to attract and retain subscribers through new service offerings and improved network quality. JDSU, the leader in end-to-end service quality monitoring solutions for wireless networks, has specifically designed the turn-key RCATS<sup>®</sup> solution for large-scale, operator-grade deployments worldwide.

## Features and Specifications

### Views and Reports

- Executive dashboard to view summary service validation test results
- Configurable views to present service KPI by region, market, cell site, or user-definable views
- Configurable views to present test case results in tables, graphically or user-defined views
- Enables distinct views and report access based on user types

### Management Console

- Multi-user interface to access and control all RCATS® resources
- Secure access and control
- Logging and alarm configuration

### Database

- SQL Server database
- Stores test scenarios, schedules and results
- Enables data export to customer-specific applications

### User Management

- Centralized management of user groups and individual users
- Centralized control of user access privileges to RCATS® resources

## Platform and System Requirements

### Recommended Platform

- Dual Intel Xeon processor
- 3.06 GHz CPU
- 4.0 GB RAM
- Ultra SCSI RAID
- 180 GB disk storage (2 x 18GB and 2 x 72 GB)
- 95 to 300 MB available disk space (depending on data)

## Solution Requirements and Options

### Required RCATS® Solution Components

- RCATS® Remote Test Probes (RTPs)
- QoSEXecutive
- QoSManager
- *Optional:* MI Server (centralized SIM repository)
- *Optional:* MI Server Controller

### RCATS® Remote Test Probes (RTPs)

- RCATS® RTP – GPRS/GSM
- RCATS® RTP – EDGE/GPRS/GSM
- RCATS® RTP – HSDPA/EDGE/GPRS/GSM
- RCATS® RTP – 1xEV-DO Rev. 0/1xRTT
- RCATS® RTP – 1xEV-DO Rev. A/1xRTT
- RCATS® RTP – iDEN

### Scalability

- Supports multiple QoSManagers, each of which supports up to 50 Remote Test Probes (RTPs)

### Management of Remote Test Probes (RTPs)

- Centralized management and control of RTPs by switch, IP address, or location
- Provides direct access to individual RTPs from a central location by telnet
- Comprehensive alarming

### Management of QoSManagers

- Configure, schedule and manage service validation testing
- Load balance testing across available RCATS® resources

### Support and Warranty

- 90-day software warranty
- Web-based support and toll-free customer hotline support
- Optional extended software warranty and maintenance

### Platform Requirements

- Microsoft Windows Server 2003 Standard Edition (with 5 client licenses)
- Microsoft SQL Server 2005

### Reference Platform

- Dell PowerEdge 2650

### RCATS® Managed Services

- RCATS® RoamerNet®

### RCATS® Service Validation Packages (SVPs)

- RCATS® SVP – Basic Voice
- RCATS® SVP – Supplementary Services
- RCATS® SVP – Basic Data
- RCATS® SVP – WAP
- RCATS® SVP – SMS
- RCATS® SVP – MMS
- RCATS® SVP – Voice Quality
- RCATS® SVP – IVR

### Test & Measurement Regional Sales

NORTH AMERICA TOLL FREE: 1 866 228 3762 FAX: +1 301 353 9216	LATIN AMERICA TEL: +55 11 5503 3800 FAX: +55 11 5505 1598	ASIA PACIFIC TEL: +852 2892 0990 FAX: +852 2892 0770	EMEA TEL: +49 7121 86 2222 FAX: +49 7121 86 1222	WEBSITE: <a href="http://www.jdsu.com">www.jdsu.com</a>
--	---	--	--	---