

The logo consists of the word "VIAMI" in a bold, white, sans-serif font. The letters are stylized with small gaps between them, giving it a modern, digital appearance. The background of the logo is a dark blue triangle pointing downwards, which is part of a larger graphic design on the slide.

VIAMI

VIAMI Solutions

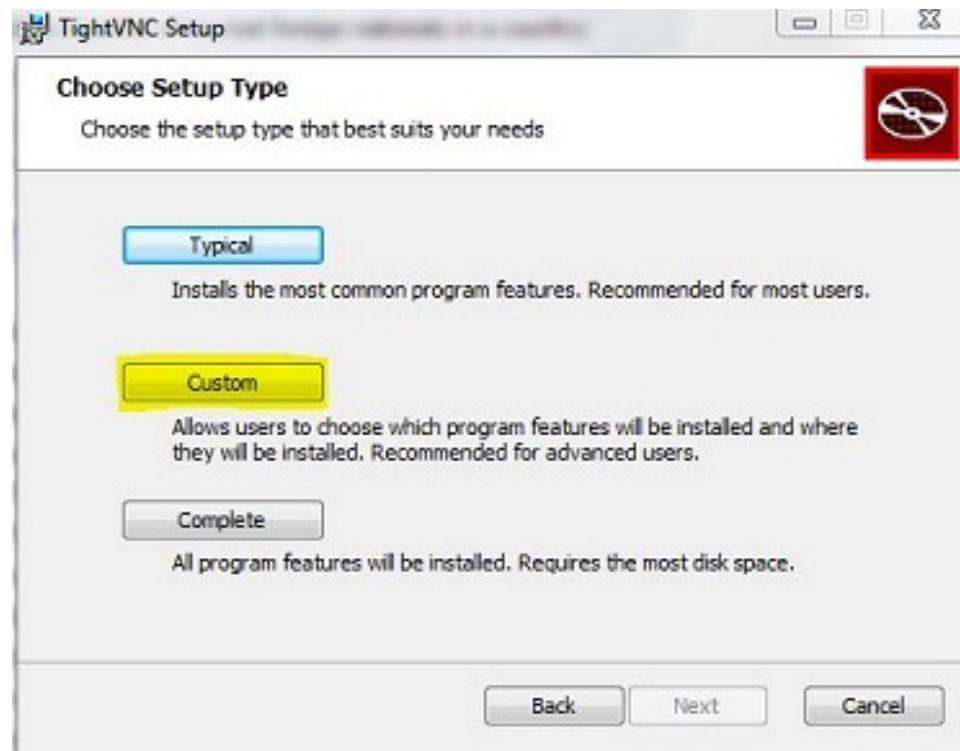
**Remote Operation of the 3550R,
the 3920B, and the 8800SX Radio
Test Sets Using TightVNC**

TightVNC

- TightVNC is a free remote control software package. With TightVNC, you can see the test set display and operate it remotely.
- By networking the 3550R, the 3920B, or the 8800SX Radio Test Sets, you can access the unit remotely as they all run a VNC server. All our test sets support either Static IP addressing or automatic IP address assignment from a DHCP server.
- You will need to network your test set by connecting through a router or switch, or directly to the computer via a crossover cable.
- You might need to consult your IT Department for help networking the test set.
 1. You will need to download and install TightVNC
 2. Set the IP mode and address of the test set
 3. Connect to the test set using TightVNC

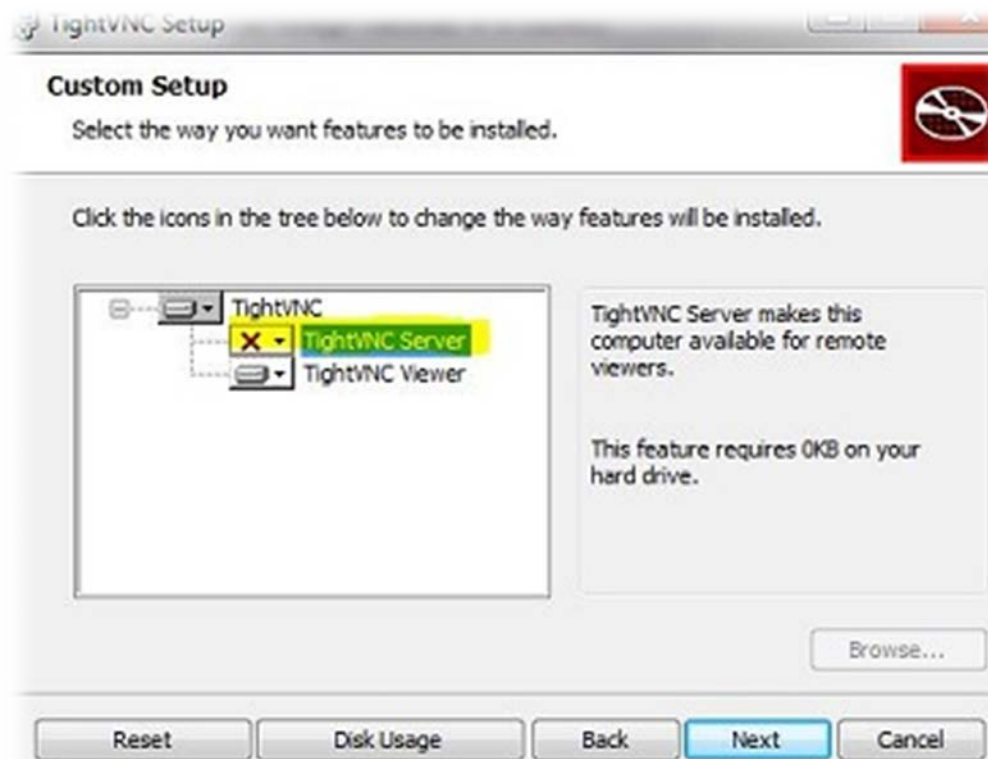
TightVNC Installation

- Go to <http://www.tightvnc.com/download.php> and download TightVNC for Windows
- When installing TightVNC, select Custom under Choose Setup Type



TightVNC Installation

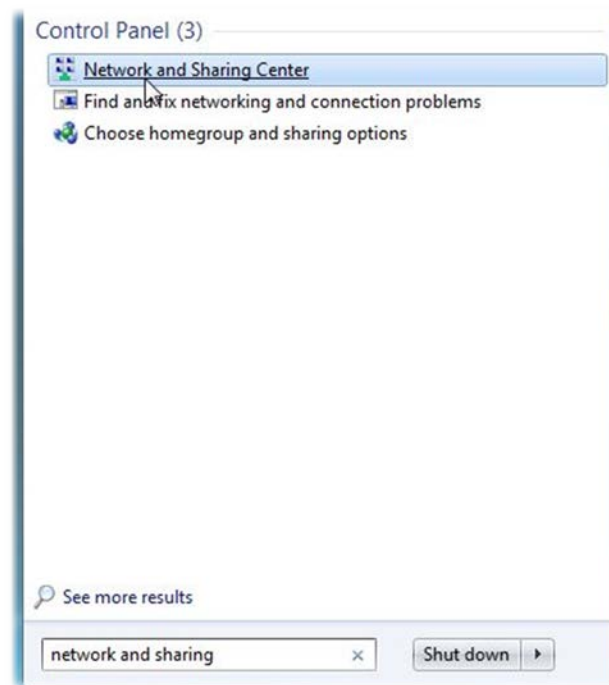
- Select to not install TightVNC Server
- Only TightVNC Viewer needs to be installed



Network Setup

Networking via Router or Switch (DHCP) vs Direct Network Connection

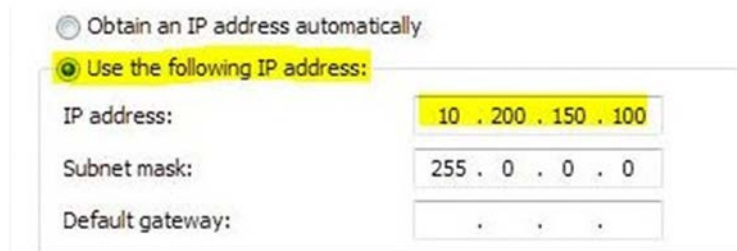
- If connecting through an existing network via a router or switch using DHCP, you can proceed to checking the IP Address of the test set
- If directly connecting from a PC to the test set, you must use a crossover cable and assign a static IP for both the PC and test set (see below)
- To assign a static IP in Windows 7 or newer, type network and sharing into the Search box in the Start Menu and select Network and Sharing Center



Network Setup

Direct Network Connection

- Click on Change adapter settings, then right-click on your local adapter and select Properties.
- Highlight Internet Protocol Version 4 (TCP/IPv4) and click Properties
- Select Use the following IP Address and enter an IP Address (ie 10.200.xxx.x)
- The static IP you set for the tester will need to be in the same range (consecutive address work best; if the PC is 10.200.150.20, set the tester to 10.200.150.22)



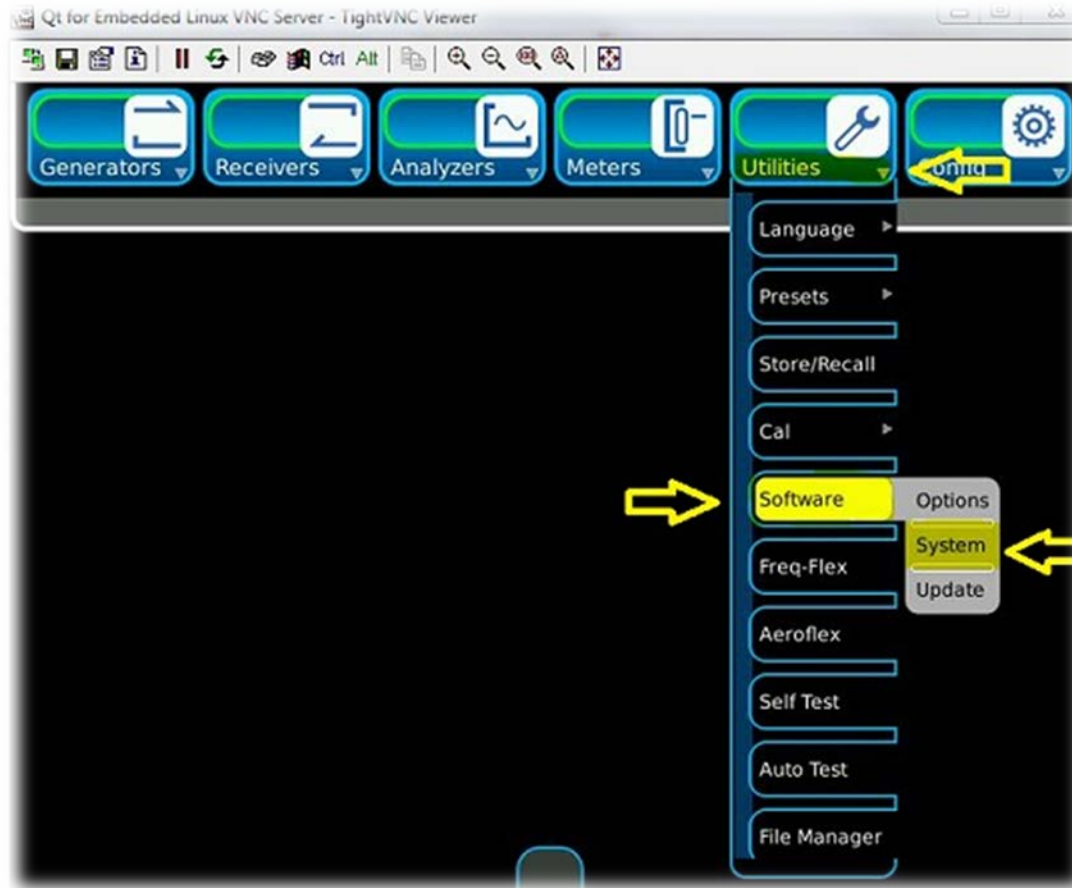
The image shows a screenshot of the Windows Network Setup dialog for Internet Protocol Version 4 (TCP/IPv4). The "Use the following IP address:" option is selected and highlighted in yellow. The IP address field is filled with "10 . 200 . 150 . 100", the Subnet mask field is filled with "255 . 0 . 0 . 0", and the Default gateway field is empty with three dots.

<input type="radio"/> Obtain an IP address automatically	
<input checked="" type="radio"/> Use the following IP address:	
IP address:	10 . 200 . 150 . 100
Subnet mask:	255 . 0 . 0 . 0
Default gateway:	. . .

Checking the IP Address of the Test Set

8800SX

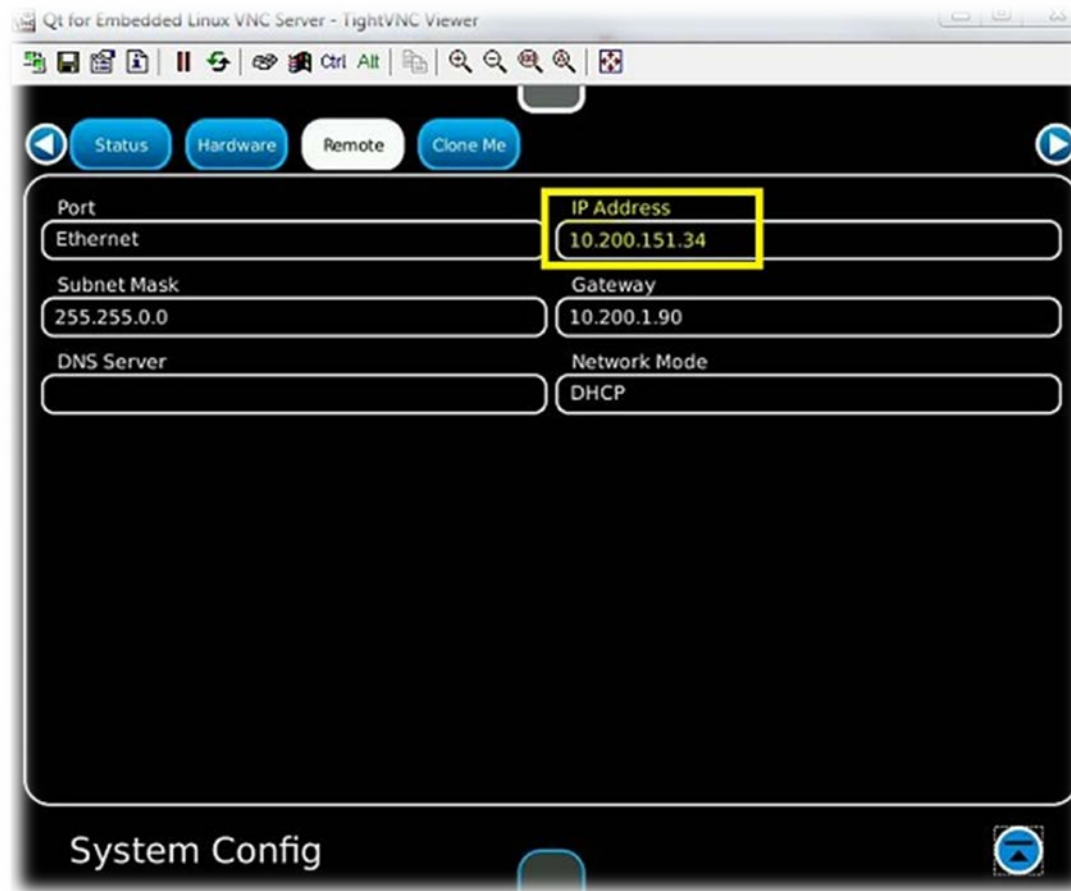
- On the 8800SX, select Utilities>Software>System



Checking the IP Address of the Test Set

8800SX

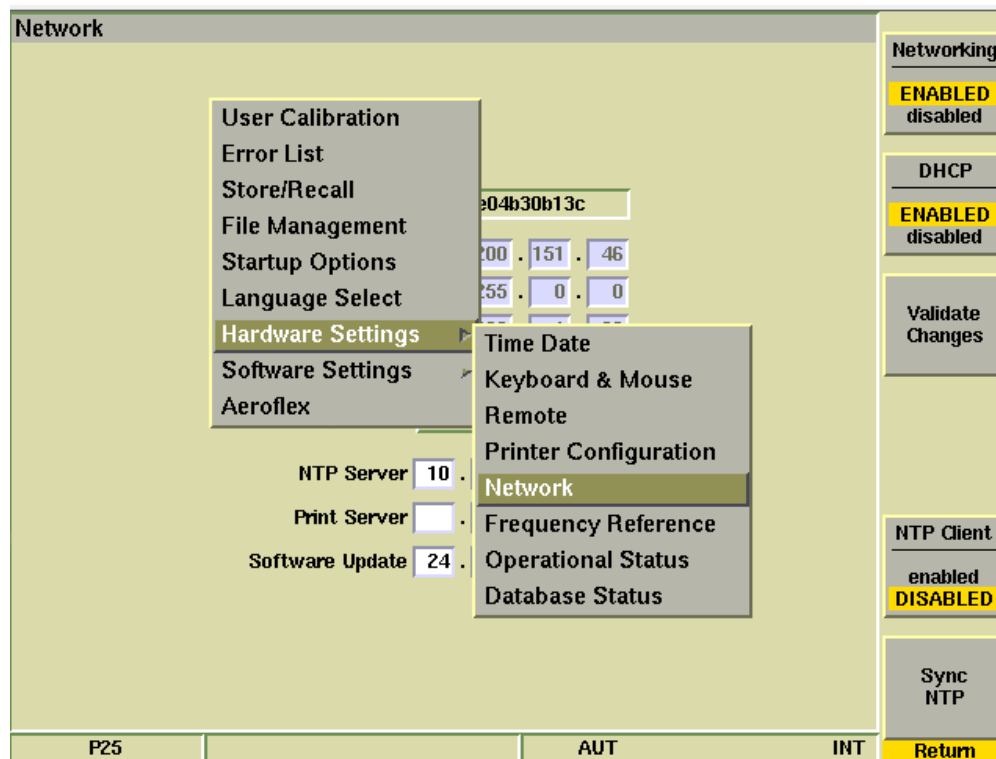
- Select the Remote Tab, which will display the IP Address of the 8800SX
- If directly connecting, set the Network Mode to Static IP and then enter the IP Address



Checking the IP Address of the Test Set

3920B

- From the Utils Menu, go to Hardware Settings>Network



Checking the IP Address of the Test Set

3920B

- The IP Address is displayed
- If directly connecting, set DHCP to disabled and the enter the IP Address
- After entering the IP Address, press Validate Changes

Network

Networking
ENABLED
disabled

DHCP
ENABLED
disabled

Validate Changes

MAC Addr 00e04b30b13c

IP 10 . 200 . 151 . 46

Subnet Mask 255 . 255 . 0 . 0

Gateway 10 . 200 . 1 . 90

DNS 10 . 200 . 1 . 249

Negotiation Auto

NTP Server 10 . 200 . 1 . 249

Print Server

Software Update 24 . 249 . 118 . 22

NTP Client
enabled
DISABLED

Sync NTP

Return

P25 AUT INT

3920 in DHCP Mode
(Network assigns the IP)

Network

Networking
ENABLED
disabled

DHCP
enabled
DISABLED

Validate Changes

MAC Addr 00e04b30b13c

IP 10 . 200 . 150 . 22

Subnet Mask 255 . 255 . 0 . 0

Gateway 10 . 200 . 1 . 90

DNS 10 . 200 . 1 . 249

Negotiation Auto

NTP Server 10 . 200 . 1 . 249

Print Server

Software Update 24 . 249 . 118 . 22

NTP Client
enabled
DISABLED

Sync NTP

Return

P25 AUT INT

3920 in Static IP Mode
(Operator assigns the IP)

Checking the IP Address of the Test Set

3550R

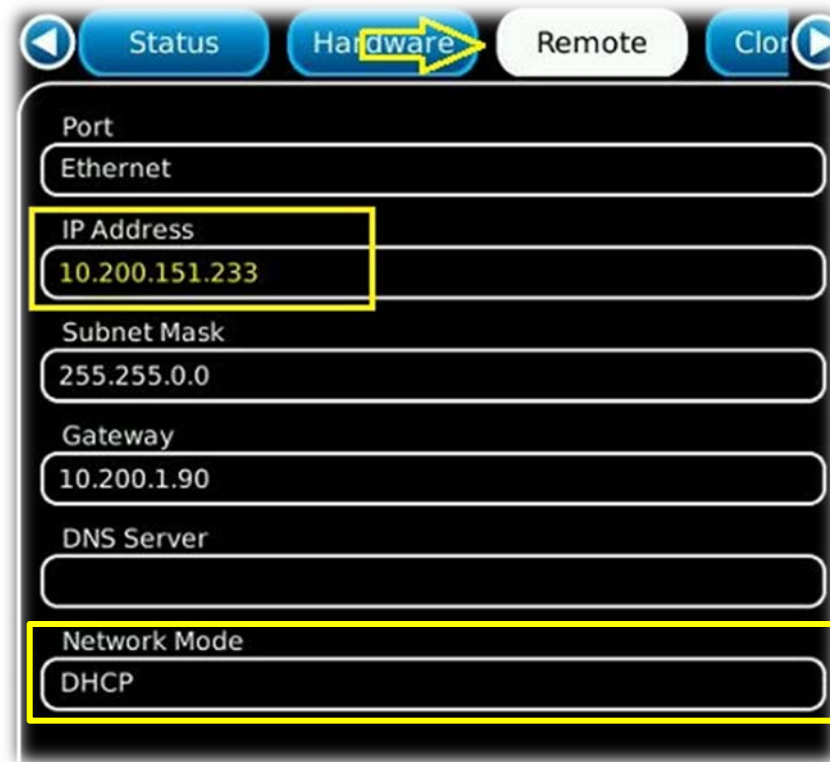
- On the 3550R, go to System>System Config



Checking the IP Address of the Test Set

3550R

- Under the Remote Tab, the IP Address will be displayed
- If directly connecting, set the Network Mode to Static IP and then enter the IP Address



Using TightVNC

- After TightVNC Viewer is installed, enter the IP Address of the unit you wish to connect to and click on the Connect Button.

Note: On the 3920B, the default password is 3900 (VNC Viewer Password can be changed in Utils>Hardware Settings>Remote)

Note: On the 3920B, the remote keyboard can be used to access the following front panel keys:

ALT+A: Assign Key

ALT+T: Test Key

ALT+C: Config Key

ALT+U: Utils Key

PGUP and PGDN: Up and down arrows

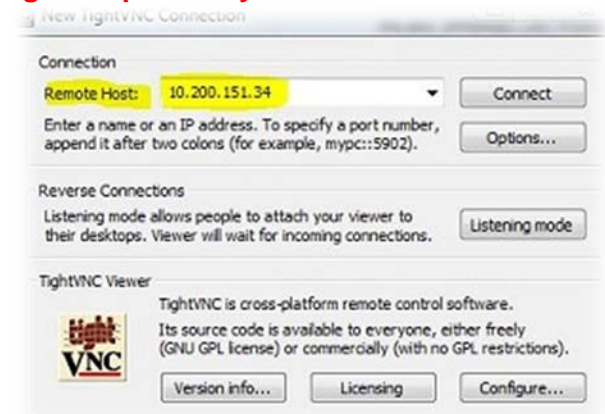
F1: Help

F2-F7: Function key selections

F8 - Return

Note: On the 8800SX, you cannot connect while a mouse is connected to the test set

Note: On the 8800SX and the 3550R, pressing F1 while using TightVNC viewer will pull up the System Menu



Questions or Comments?

Contact Information

For information about pricing for our products, contact the sales office by calling VIAVI Solutions at (800) 835-2352 or emailing AvComm.Sales@viavisolutions.com.

For technical/product support, calibration, maintenance and general customer service inquiries, you can contact our help desk by [clicking here](#), calling (800) 835-2350, or emailing Service.Americas@aeroflex.com.

[Click here](#) for more information on the 8800SX and latest software versions and training materials.