

Test and Measurement Solutions for the Automotive Industry

Market-leading Test And Measurement for an Era of Rapid Automotive Innovation



MARKET-LEADING TEST AND MEASUREMENT FOR AN ERA OF RAPID INNOVATION

The automotive industry is in a period of rapid evolution. New technology is improving the driving experience, making vehicles safer, enabling sophisticated infotainment services, and turning vehicles from standalone machines into hyper-connected nodes on the Internet of Things.

At the same time, the industry has an eye to an autonomous future, in which vehicles will be capable of making their own driving decisions and taking appropriate action.

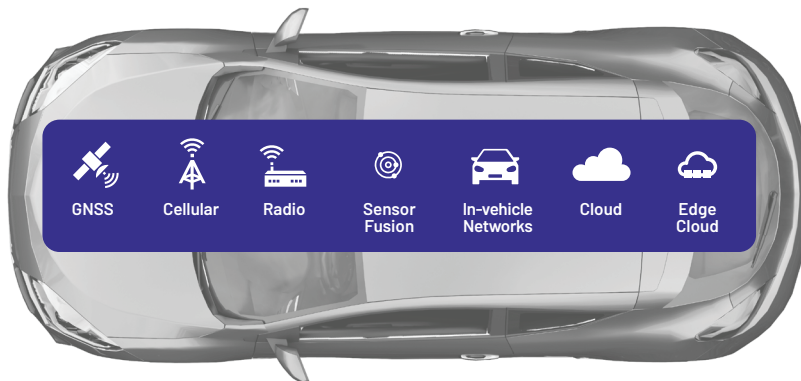
For every player in the industry, the pressure is on to bring innovative, safe and compliant products to market fast—from specialist semiconductors all the way to fully-integrated driver assist systems. With in-vehicle and V2X systems spiraling in complexity, new test solutions are needed to ensure performance, compliance and safety while accelerating product development.

VIAMI Solutions Suite

VIAMI has the test equipment and expertise to enable rapid, reliable and cost-effective testing at every tier of the automotive tech stack, for every player in the automotive and autonomous vehicle value chain, and at every stage in the vehicle development lifecycle.

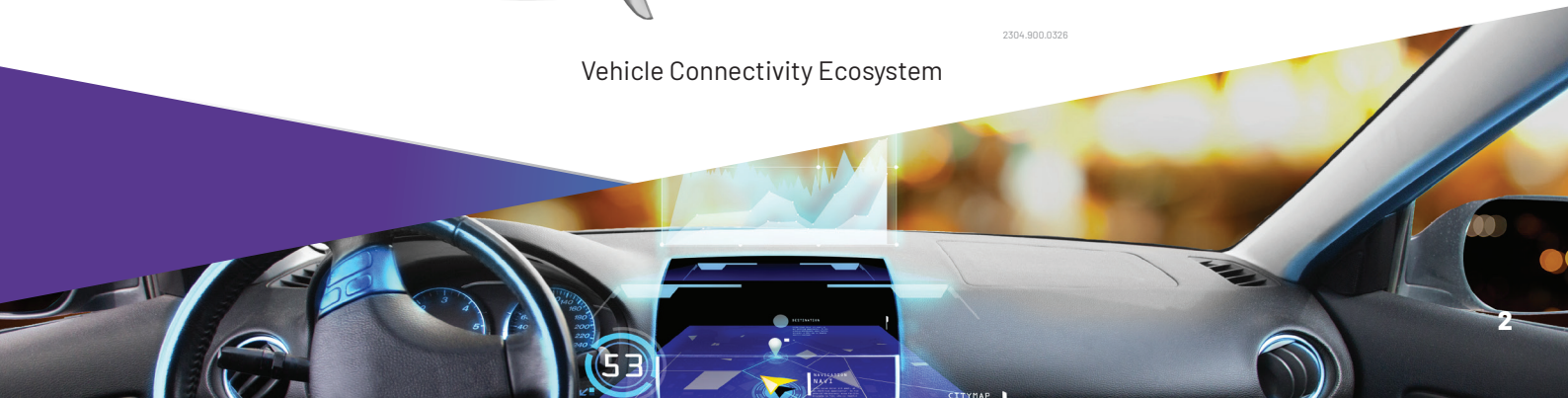
Our positioning, navigation and timing (PNT) and Ethernet test systems incorporate decades of experience working with the leading players in the automotive and autonomous industries, delivering the interoperability required for growing levels of complexity.

Through our unmatched precision, performance and test realism, we enable developers to bring new automotive innovations to market faster while ensuring standards conformance and regulatory compliance.



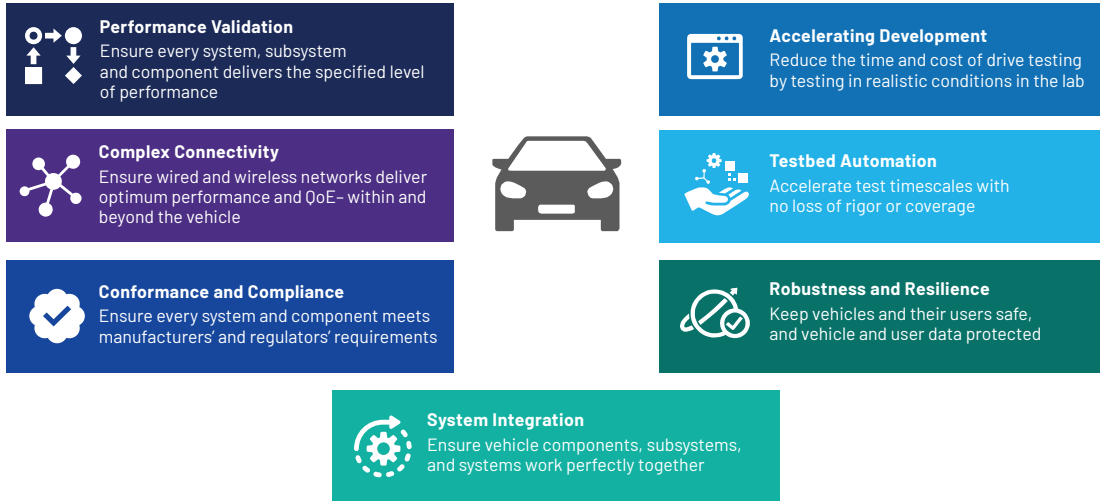
2304_900.0326

Vehicle Connectivity Ecosystem



SOLUTIONS FOR YOUR MOST PRESSING TEST CHALLENGES

Wherever your organization operates within the automotive industry ecosystem, you can rely on VIAVI solutions to solve your most pressing test challenges.



2305.900.0326

Comprehensive Vehicle Validation

Performance Validation

From vendor selection to full-vehicle and V2X infrastructure testing, VIAVI solutions enable you to characterize the performance of your systems under test with accurate, reliable and fully-documented reports.

Conformance and Compliance

Whether you need to meet an OEM's quality criteria or ensure your vehicle design meets national or international standards and regulations, VIAVI's powerful, flexible test solutions enable you to apply a wide range of test scenarios and have full confidence in the results.

Robustness and Resilience

From securing data across wireless and wired networks to mitigating the impact of incidental or malicious radio frequency interference (RFI), VIAVI solutions enable you to assess the robustness and resilience of your automotive systems in a wide range of realistic adversarial conditions.

Complex Connectivity

Powering everything from basic actuators to remote diagnostics, over-the-air firmware updates and streaming video entertainment, the layers of connectivity within and beyond the vehicle are becoming more complex. VIAVI is the market leader in complex connectivity testing, enabling you to test wired and wireless networks faster, more effectively, and with full confidence in the results.

System Integration

Ensuring your chosen components and subsystems work together as expected requires testing at every stage of integration: from building individual electronics modules to assembly of the complete vehicle. VIAVI solutions support rigorous, repeatable testing at every stage of development, allowing you to pinpoint and address any integration issues as early as possible in the lifecycle.



Testbed Automation

Pressure on delivery timescales means finding faster and more efficient ways to test, with no loss of test rigor or coverage. VIAVI's test automation solutions enable you to set up and run complex testing scenarios in minutes, while reducing equipment needs through better sharing of resources.

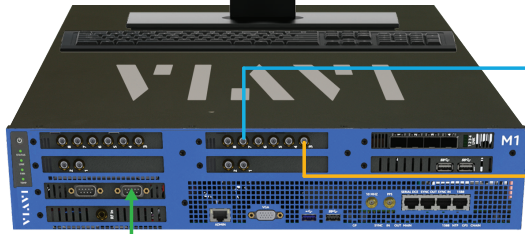
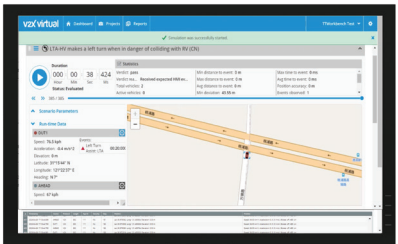
Accelerating Development

Drive testing is a vital but often expensive and time-consuming aspect of new vehicle development. VIAVI solutions allow you to reduce the time and cost of drive testing by bringing realistic test conditions into the lab. Simulate millions of hours of driving in normal and unusual conditions, and test corner cases that would be difficult or impossible to produce in the real world.

DESIGNED TO WORK WITH THIRD-PARTY SYSTEMS

VIAVI recognizes that automotive test benches comprise a range of specialist test equipment from different vendors. Our test equipment and APIs offer full, low-latency interoperability with a wide array of leading automotive test systems. Contact us to discuss integrating VIAVI solutions into a wider automotive test system.

V2X Virtual Software



C-V2X Hardware Platform

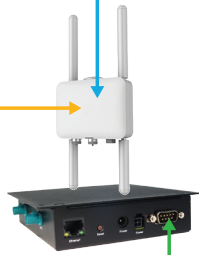
GNSS Simulator



Vertex Channel Emulator



Device/System Under Test



- V2X RF (LTE -V/5G PC5/Uu)
- IVN: CAN/AUTO ETHERNET
- GPS RF (Timing and Positioning)

2306.900.0326



viavisolutions.com

Contact Us +1 844 GO VIAVI | (+1 844 468 4284)

To reach the VIAVI office nearest you, visit viavisolutions.com/contact

© 2026 VIAVI Solutions Inc.

Product specifications and descriptions in this document are subject to change without notice.

Patented as described at viavisolutions.com/patents

tmsolutions-automotive-br-hse-nse-ae
30195020 900 0326