

# TestCenter Platforms

Trusted Partner for Verifying the Network and Cloud Evolution



# TESTCENTER PLATFORMS

## Appliances and Test Modules

VIAMI's flexible High-Speed Ethernet portfolio helps validate Ethernet technologies from 100M to 1.6T at the highest scale, deepest functionality, and most cost effective way.



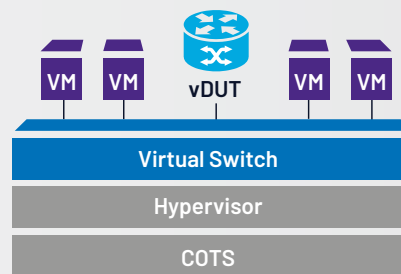
## Compact Appliances

TestCenter compact appliances offer the power of VIAMI's L2-3 router, switch, application, security, TSN, and automotive test solutions in a flexible and portable form factor.



## Virtual Solution

TestCenter Virtual delivers a unified testing architecture that ensures full compatibility with any TestCenter interface and enables porting of prior investment in test cases for physical to virtual.



### TRUSTED PERFORMANCE

Decades of experience in network testing, industry-leading hardware and software platforms proven over multiple generations of network technologies.



### UNPARALLELED FLEXIBILITY

TestCenter platforms can interoperate and cooperate in a single test to tailor test infrastructure to deliver optimal results without breaking the budget.



### INDUSTRY LEADERSHIP

100% of the world's top Service Providers, network and device vendors use VIAMI.

# ETHERNET TEST AND VALIDATION SOLUTIONS

## High-Speed Ethernet

Launch products and services quickly and with confidence, while ensuring a reliable, high-quality user experience.

- High flexibility with support for more interfaces and protocols across several multi-speed test modules and appliances
- Support for 1.6T, 800, 400, 200, 100, 50, 40, 25, and 10G, and various types of pluggables
- Extreme scalability with the ability to customize solution with evolving testing needs (industry's highest number of ports per test)

## Automotive

Bring automotive devices and networks to market faster while meeting the highest standards for performance and reliability.

- R&D testing: Technology feasibility studies and performance modeling
- Device and protocol functional testing
- Conformance and certification testing
- Device, sub-system, or services performance characterization and availability
- Stress testing requiring higher device and traffic emulation scaling
- Device benchmarking

## Time-Sensitive Networking

Easily test and validate TSN implementations to meet critical timing and safety requirements.

- Conformance and performance testing in a single hardware platform over a variety of interfaces and speeds (10M to 400G)
- Emulate TSN and non-TSN capable end-points to create realistic network environments with multiple connections, domains and different traffic profiles
- Real-time capture and analysis

# HARDWARE PORTFOLIO

## Appliances



### D2 - 1.6T Validation

Industry's highest port density QSFP 1.6T test platform for AI Fabric, Protocol, L2/3, Routing/Switching, and data center applications



### B3 - 800G Validation

Industry's first and highest density 800G QSFP-DD and OSFP test appliances for large capacity network and AI Fabric testing, with 4 and 8-port variants



### pX3 - 400G Validation

Protocol Scale



### A1 - 400G Validation

Industry's highest density 400G QSFP-DD platform supporting AI Fabric testing with 16 400G ports per 2U high appliance, offering 2x density advantage



### A2 - 400G Validation

High-density 400G QSFP-DD platform, best value to performance for software, system, scale testing, offered in a 2U appliance with 8 and 16-port variants



### A3 - 400G Validation

Unmatched scale and performance with 400G QSFP-DD with 4 400G ports per 2U appliance delivering high-capacity, traffic generation for core and edge network validation



### dX3 - 400G Validation

Data Density

## Test Modules



### dX3 - Data Density

High port density test modules designed to verify the highest scale cloud data center fabrics



### pX3 - Protocol Scale

High port density test modules with higher control and data plane scale for performance, stress & industry standard benchmark tests



### fX3 - Flexible Functionality

Broad feature set test modules with powerful emulation capabilities for testing enterprise, service provider and data center networks



### mX3 - Multiprotocol Performance

Highest performing test modules to realistically emulate entire cities for core network & converged multi-play devices and services

## Compact Appliances



**M1 Appliance**

Layer 2-3 traffic testing, powerful network emulation & application layer protocols



**C2 Appliance**

Layer 2-7 testing, in a compact, portable 2U form factor

## Chassis



**SPT-N12U Mainframe Chassis**

Next-generation platform, scales to the highest port counts and test traffic rates in the industry, any module in any slot—no chassis slot restrictions.



**SPT-N4U Compact Chassis**

Smallest chassis form-factor with innovative time- and money-saving capabilities

## TestCenter Software

- Industry's widest array of protocols emulation to validate every aspect of network infrastructure
- Layer 1-3 test solutions to accelerate test cycles and time to market for higher quality products and services, customizable to evolving testing needs
- Advanced AI workload validation and assessment capabilities
- Reduce testing complexity, improve efficiency with actionable analytics, intuitive reporting, and flexibility to visualize the dynamic behavior of systems under test

## TestCenter Virtual

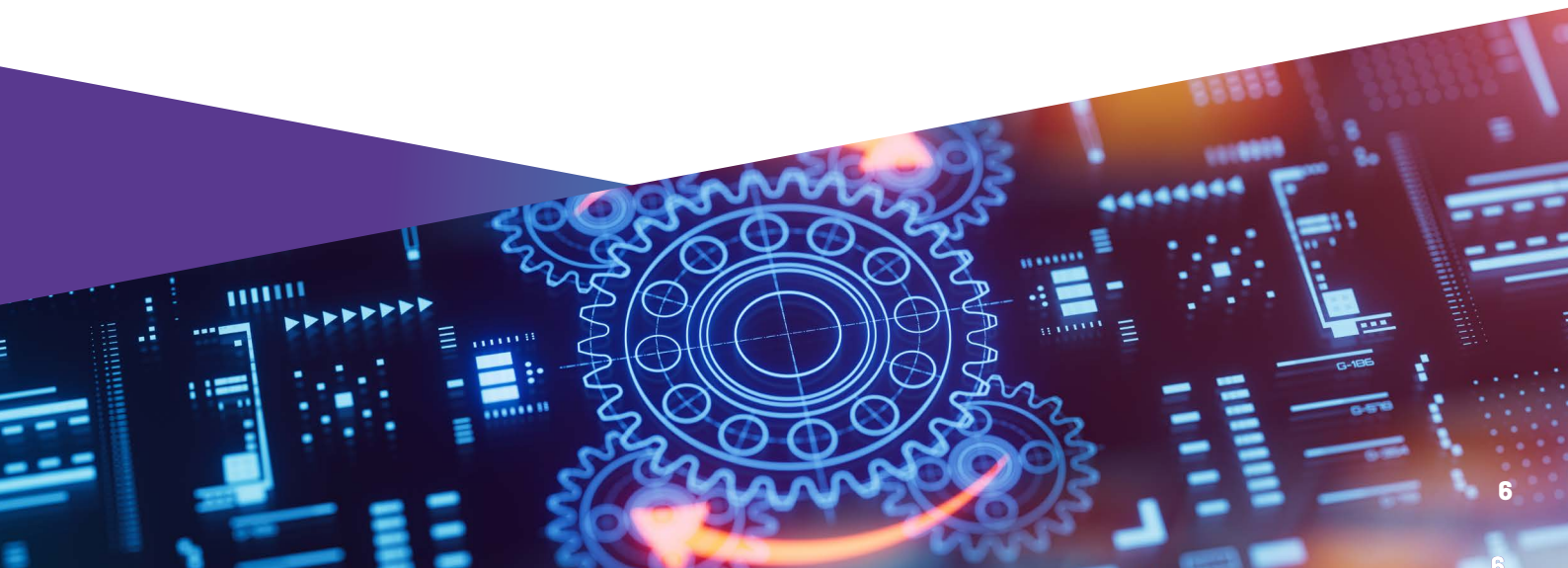
Optimize the performance and scale of network services and infrastructure deployed in public, private, or hybrid clouds.


- Layer 1-3 test and measurement with comprehensive emulation protocols
- Flexible deployment scenarios with support for a wide range of virtualization and cloud platforms
- Seamless integration with rich API support
- Portable test cases from hardware to virtual

## Automation

Whether developing scripts in Tcl or Python for a complex regression environment, or focusing on script re-use and portability across platforms and teams, or looking to speed up repetitive manual tasks, TestCenter offers:

- Multiple ways to automate in diverse environments, including HLTAPI and Robot Framework
- Easy integration with TWorkbench for test creation and orchestration
- Supports OTG (Open Traffic Generator) and gNMI (gRPC Network Management Interface) APIs, enabling users to easily leverage open-source and standardized test scripts.





# ENABLING THE ECOSYSTEM FOR NEXT-GENERATION NETWORKS

Network and cloud evolution requires flexible, high-density test solutions to validate the next generation of routers and data center AI fabrics to ensure reliability, performance, and interoperability.

VIAVI continues to lead the industry in Ethernet test and validation, bringing innovative test solutions to market first, to enable the Ethernet ecosystem to fulfill next generation networking needs.





[viavisolutions.com](https://viavisolutions.com)

Contact Us +1 844 GO VIAVI | (+1 844 468 4284)

To reach the VIAVI office nearest you, visit [viavisolutions.com/contact](https://viavisolutions.com/contact)

© 2026 VIAVI Solutions Inc.

Product specifications and descriptions in this document are subject to change without notice.

Patented as described at [viavisolutions.com/patents](https://viavisolutions.com/patents)

testcenterplatforms-br-hse-nse-ae  
30194731 903 0426