

## Quick Card

# FiberChek™ Probe Microscope Updating Firmware with FiberChekPRO™

This quick card describes how to update FiberChek Probe Microscope firmware with VIAVI FiberChek PRO software.

### Equipment Requirements:

- FiberChek Probe Fiber Inspection Microscope
- Personal Computer (PC) or Laptop
- FiberChekPRO software version 2.1 or greater (download at <http://fcpro.updatemyunit.net/>)



Figure 1: Equipment Requirements

### Firmware Update Instructions:


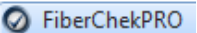
1. Press the **Power Button**  to turn on the FiberChek Probe Microscope.
2. Enable a **Wi-Fi** connection as follows:
  - Tap the FiberChek Probe **Touchscreen Display** to enter the **Settings** menu.
  - Use the **Navigation control** or touch the arrows on the screen to highlight **Radio Settings** and press the **Action Button**.
  - Use the **Navigation control** button or touch the arrows to highlight **Wi-Fi Enable** and press the **Action button**.
  - Press the **Return button** or press the **Trigger** to return to the Live Inspection screen. A Wi-Fi icon will appear at the top of the screen.
3. Connect the FiberChek Probe microscope to the PC or Laptop via **Wi-Fi** as follows:
  - Enable Wi-Fi on the Laptop or PC.
  - Look for the FiberChek SSID and select **Connect**.
4. Click the **FiberChekPRO** icon  in the Windows® Start menu on your PC or laptop to launch FiberChekPRO.



Figure 2: FiberChek Probe

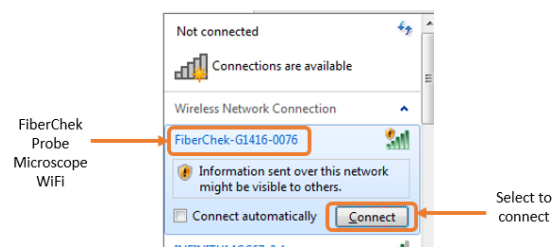


Figure 3: Wi-Fi networks

- The **FiberChekPRO** software will identify the connected FiberChek Probe device. If new firmware is available, a screen will be displayed with instructions to perform the update. Press the **OK** button.

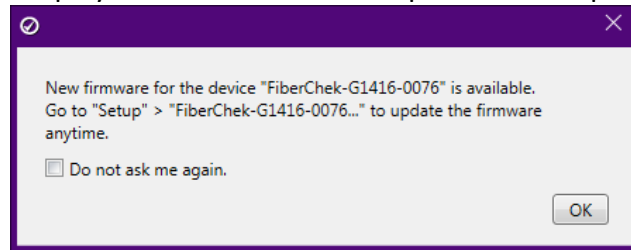


Figure 4: New firmware for FiberChek Probe is available

- Click the **"Setup"** option in the top right corner of the screen and select the 2<sup>nd</sup> option: **FiberChek...**

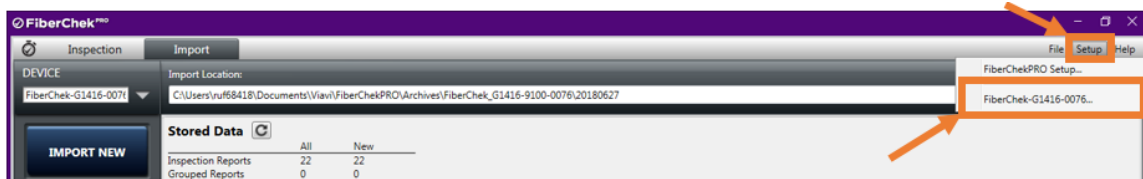


Figure 5: FiberChek PRO Setup menu

- The **FiberChek Setup** screen will be displayed. Select the **Firmware** option and click on the **"Update Firmware..."** button.

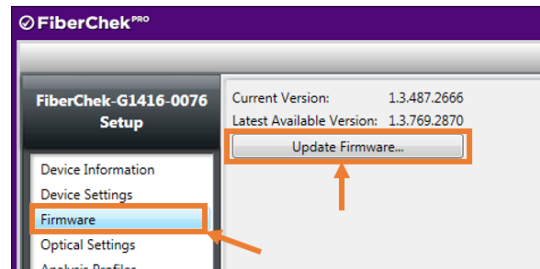


Figure 6: FiberChek Setup

- A window will be displayed indicating that the firmware update process was started.

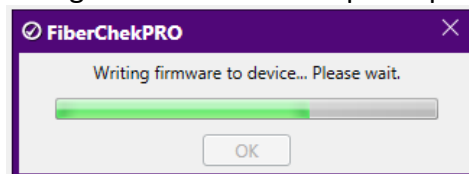


Figure 7: Update process started

- After a few seconds, a window will be displayed with instructions to complete the update.

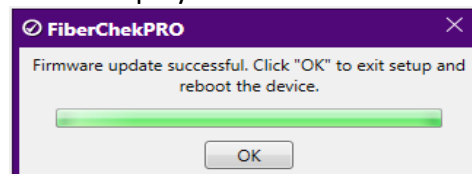


Figure 8: Firmware update successful.

- Click **OK** to complete the update and reboot the FiberChek Probe Microscope.
- The **FiberChek Probe Microscope** is ready to be used with the latest firmware revision.