

Data Sheet

# VIAVI

## OneAdvisor 800

Modular test platform designed for use in the installation and maintenance of fiber, wireless and transport applications.

The VIAVI OneAdvisor 800 is the first test tool designed to address the challenges of a modern network field technician. By rolling all the key test capabilities into one portable tester and combining it with easy-to-use test process and reporting automation, VIAVI has equipped wireline and wireless service providers, equipment manufacturers, system integrators, and contractors to meet the work-speed and test coverage requirements for telecommunication networks buildouts and maintenance.

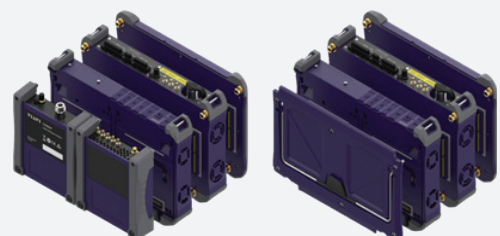


### Key Features and Benefits

- Extended modularity; dual-bay, detachable or plug-in (via Module carrier) capability that can be combined
- Job Manager for workflow automation for seamless job between all test functions– Enabled by cloud base StrataSync service
- SAA (Smart Access Anywhere) for Remote Access and coaching

### Measurements

- RF Spectrum Analyzer and Signal Analyzer for 4G and 5G
- Singlemode and multimode OTDR
- CWDM and DWDM OTDR
- Bi-directional Optical Loss and ORL Test
- Optical spectrum analyzer
- CWDM and DWDM optical channel checker
- Broadband optical Power level
- Connector end face inspection
- Ethernet and protocol testing
- Optical dispersion and Attenuation profile
- RF power sensor
- Cable and Antenna Analyzer



## General Information

| Inputs and Outputs          |  |
|-----------------------------|--|
| USB                         | 2x USB 2.0 Host                              |
| Memory Card                 | 1x micro SD                                  |
| LAN                         | RJ-45, 1000 Base-T                           |
| Audio                       | Built-in speaker 1x USB-C for Audio output   |
| Display                     | 8", 1280 x 800 resolution                    |
| Power                       |  |
| Connector                   | Rectangular DC Jack                          |
| External DC Input           | 19 VDC                                       |
| Power consumption           | Mainframe: 10.8W (w/ 70% brightness setting) |
| Battery                     |  |
| Type                        | 14.4 V, 6800 mAh (Lithium ion)               |
| Operating time              | MF (mainframe) only: > 8hrs                  |
| Charging time               | 100 % charging                               |
|                             | Standard (one battery): > 2:2 hrs            |
|                             | Up to 80 % charging                          |
| Charging temperature        | Standard (one battery): > 1:40 hrs           |
|                             | 0 to 45°C (32 to 113°F) ≤ 85% RH             |
| Discharging temperature     | -20 to 55°C (-4 to 131°F) ≤ 85% RH           |
| Storage temperature         | -20 to 60°C (-4 to 140°F)                    |
| Operating Temperature       |  |
| 0 to 40°C (32 to 104°F)     | AC Power with battery charging               |
| -10 to 55°C (14 to 131°F)   | Battery discharging condition                |
| Storage temperature         |  |
| -20 to 60 °C (-4 to 140 °F) |  |
| Maximum humidity            |  |
| 95% RH (noncondensing)      |  |
| Memory                      |  |
| Internal                    | 6.2 GB total, shared by system memory        |

|          |  |
|----------|--|
| External | Micro-SD: up to 32GB<br>USB flash memory: limited by size of the flash drive<br>Supported file system: FAT, FAT3, ext4 |
|----------|--|

| Environmental       |  |
|---------------------|--|
| Shock and Vibration | MIL-PRF-28800F                             |
| Bench handling      | MIL-PRF-28800F                             |
| Drop                | MIL-PRF-28800F<br>ETSI EN 300 029-2-7      |
| EMC                 | IEC/EN 61326-1<br>FCC part 15B<br>ICES-003 |

| Size and weight (Mainframe) |  |
|-----------------------------|--|
| Weight                      | 2.0 kg (4.4 lb) without module (including battery)     |
| Size (W x H x D)            | 270 x 170 x 60 mm (10.6 x 6.7 x 2.3 in) without module |

| Size and weight (Fiber module receptacle) |                                       |
|---|---------------------------------------|
| Weight                                    | 0.8 kg (1.7 lb) without test module   |
| Size (W x H x D)                          | 270 x 170 x 50 mm (10.6 x 6.7 x 2 in) |

| Warranty |  |
|----------|--|
| 3 years* |  |

\* Applied to Mainframe and module only. For every accessory, 1-year warrant is applied.

## Built-In hardware option

### ONA-PMVFL

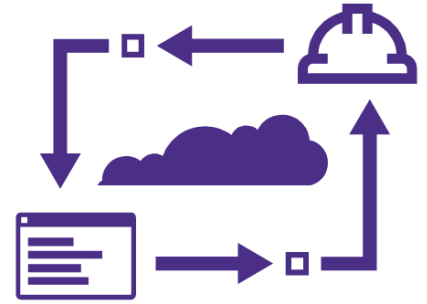
| Power Meter           |                           |
|-----------------------|---------------------------|
| Power Level           | +10 to - 60 dBm           |
| Calibrated wavelength | 850, 1310, 1550nm         |
| Connector type        | Universal push/pull (UPP) |
| Visual Fault Locator  |                           |
| Wavelength            | 650 nm +/- 15nm           |
| Output power level    | < 1mW                     |
| Laser safety          | Class 2 laser             |

## Platform Ordering Information

| Part  | Description  |
|---|--|
| ONA-800A  | OneAdvisor ONA-800A Mainframe with Display                                   |
| <b>Solution Hardware Modules</b>                |  |
| E81FMC1   | Fiber module receptacle for E8100-series fiber modules                       |
| <b>Software Options for OneAdvisor Platform</b> |  |
| ONA-MF-BT                                       | Bluetooth connectivity   |
| ONA-MF-WIFI                                     | WiFi connectivity  |
| SAA-ADVISOR                                     | Smart Access Anywhere for CellAdvisor Products                               |
| <b>Accessories for OneAdvisor Platform</b>      |  |
| CC-034601                                       | Large Carrying Case for HST and OneExpert                                    |
| FBP-SD101                                       | Kit FBP-P5000I Digital Probe FiberChekPro SW Case And Tips                   |
| FIT-FC-KIT3                                     | Kit FiberChek Autofocus WiFi Microscope Tips for LC/PC SC/PC and SC/APC Case |
| G700050125                                      | 120 watts DC to DC car cigarette lighter charger adapter                     |
| G700050127                                      | OneAdvisor 800 AC/DC Power Adapter 160 W 19 V                                |
| G700050150                                      | 98 Wh Lithium-ion battery  |
| G700050701                                      | OneAdvisor 800 with RA/SPA module hard carrying case with wheels             |
| G710550324                                      | External Battery Charger   |
| JD70050342                                      | Hard Carrying Case With Wheels   |
| JD731B  | Directional Power Sensor Average Peak Pulse                                  |
| JD736B  | Terminating Power Sensor_Dual_Average/Peak_Power 20 to 3800 MHz              |
| MP-60A  | USB Optical Power Meter with Accessories                                     |
| ONA-800A-BC                                     | OneAdvisor back cover  |
| ONA-800A-HN                                     | OneAdvisor Harness   |
| ONA-800-DISPL                                   | OneAdvisor Display   |
| ONA-PMVFL                                       | Power Meter and VFL Mainframe Module for OneAdvisor 800                      |

## Managing your workforce, tasks and test data

Test Process Automation (TPA) allows your team to deliver expert-level test results and close projects on the first try, every time. TPA is a closed loop test system that optimizes workflows, eliminates manual, error prone work and automates immediate data reporting for job close out, team progress updates and network health analytics. Execute jobs efficiently to ensure high quality network builds, rapid turn-up/activation, and enhanced operational visibility.



## VIAVI Care Support Plans

### Increase your productivity for up to 5 years with optional VIAVI Care Support Plans:

- Maximize your time with on-demand training, priority technical application support and rapid service.
- Maintain your equipment for peak performance at a low, predictable cost.

Plan availability depends on product and region. Not all plans are available for each product or in every region. To find out which VIAVI Care Support Plan options are available for this product in your region, contact your local representative or visit: [viavisolutions.com/viavicareplan](https://viavisolutions.com/viavicareplan)

## Features

\*5-year plans only

| Plan           | Objective                          | Technical Assistance | Factory Repair | Priority Service | Self-paced Training | 5 Year Battery and Bag Coverage | Factory Calibration | Accessory Coverage | Express Loaner |
|----------------|------------------------------------|----------------------|----------------|------------------|---------------------|---------------------------------|---------------------|--------------------|----------------|
| <br>BronzeCare | Technician Efficiency              | Premium              | ✓              | ✓                | ✓                   |                                 |                     |                    |                |
| <br>SilverCare | Maintenance & Measurement Accuracy | Premium              | ✓              | ✓                | ✓                   | ✓*                              | ✓                   |                    |                |
| <br>MaxCare    | High Availability                  | Premium              | ✓              | ✓                | ✓                   | ✓*                              | ✓                   | ✓                  | ✓              |



Contact Us **+1 844 GO VIAVI**  
(+1 844 468 4284)

To reach the VIAVI office nearest you,  
visit [viavisolutions.com/contact](https://viavisolutions.com/contact)

© 2022 VIAVI Solutions Inc.  
Product specifications and descriptions in this document are subject to change without notice.  
Patented as described at  
[viavisolutions.com/patents](https://viavisolutions.com/patents)  
ona800-ds-xpf-nse-ae  
30191107 907 0822