

StrataSync™ Initial Setup Guide for

T-BERD 6000A (BERT)

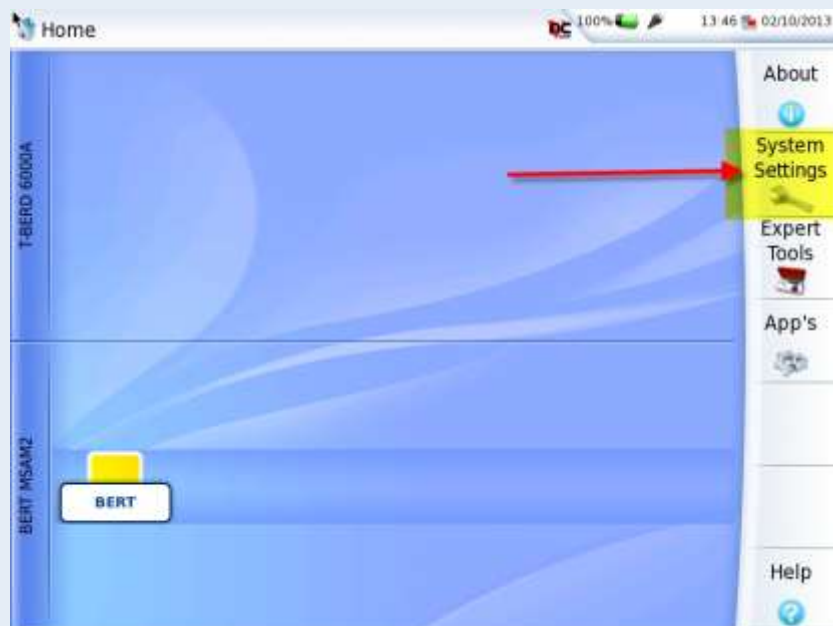


This guide is intended to assist the StrataSync™ administrator or user in the initial set up and configuration of their StrataSync™ enabled instruments. This guide is for informational purposes and not intended to replace the on-line help system available from the Global Navigation Menu in StrataSync™.

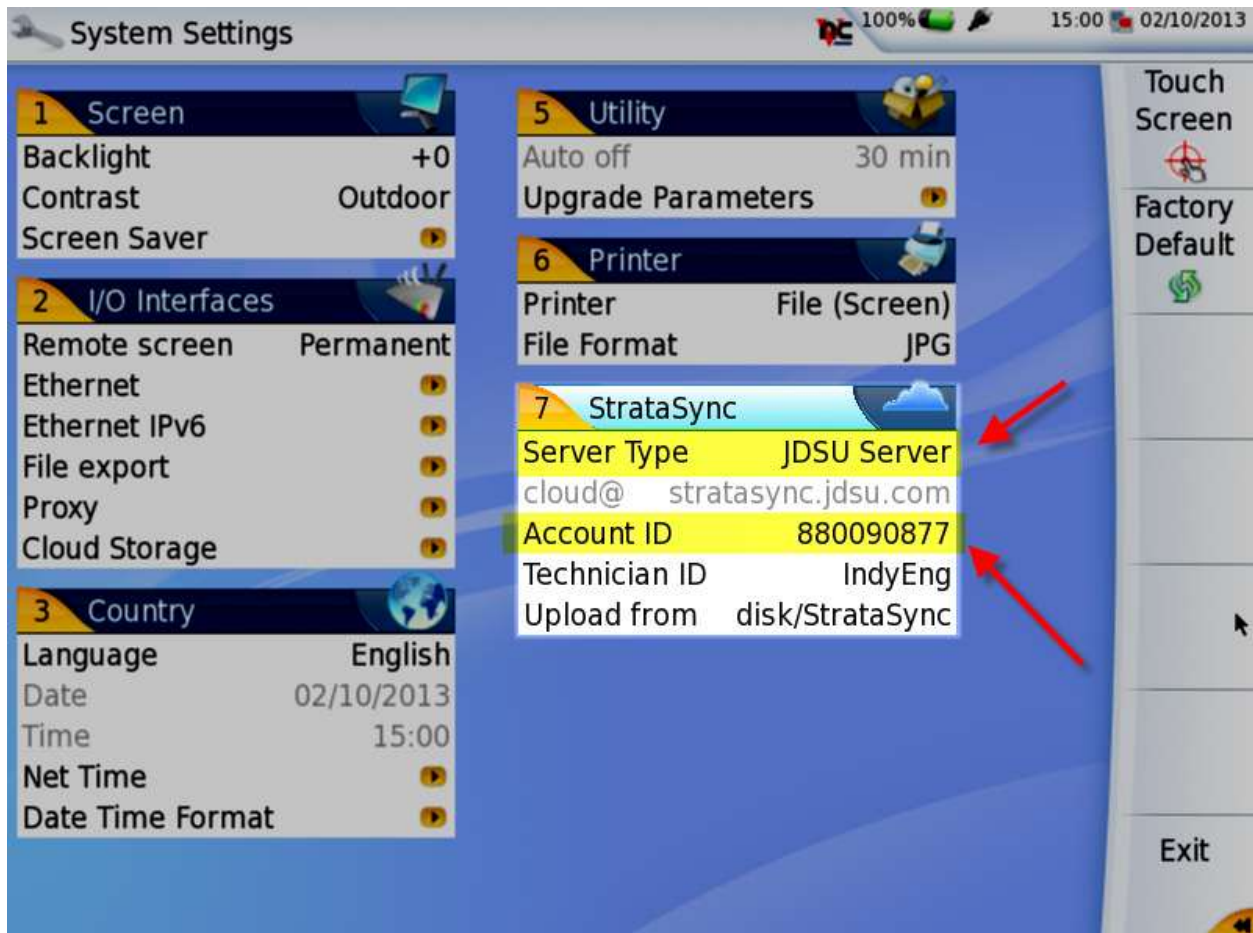
Step 1. Prepare the MTS-6000A

Set Account ID (Tenant ID)

1. Ensure your instruments have at least the minimum required Firmware version installed to enable StrataSync™ (Fiber Firmware 11.02 recommended, BERT Firmware 17.3 recommended)
2. From the Home screen, click on “System Settings”.



3. Select "JDSU Server" as Server Type
4. Enter Customer Account ID in Account ID Field, then press "Enter"
5. Click "Exit" to return to Home screen.



Note: Your Customer ID may be found by clicking System Info on the StrataSync Home screen

