

# Table Of Contents

Table Of Contents .....	1
jobdef.pdf .....	2
Fiber 1 .....	4
Fiber 2 .....	5
Fiber 3 .....	6
Fiber 4 .....	7
Fiber 5 .....	8
Fiber 6 .....	9
Fiber 7 .....	10
Fiber 8 .....	11
Fiber 9 .....	12
Fiber 10 .....	13

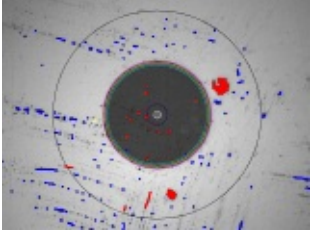
Report Date 8/19/2014 4:51:26 PM  
 Company Name  
 Location me  
 Operator fvf

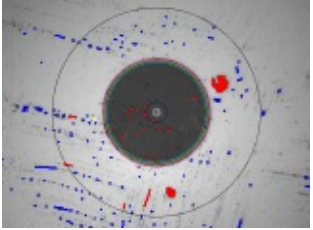
**Fiber Information**

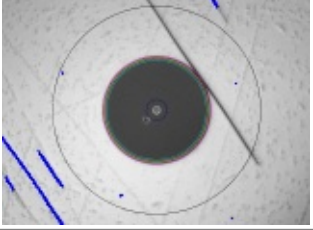
File Name jobdef.pdf  
 Fiber Type Simplex  
 Job ID fdsd  
 Cable ID here  
 Connector ID blah

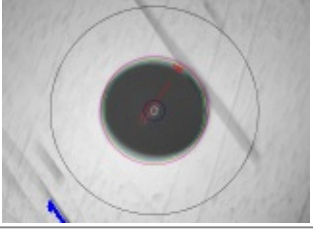
**Comments**

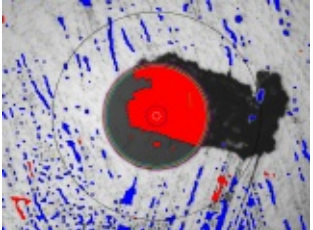
**Inspection Summary**

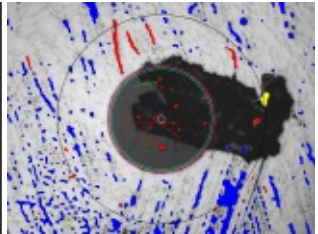
	<b>Fiber 1</b>  <b>FAIL</b>	SM UPC (IEC-61300-3-35) 8/19/2014 4:49:00 PM	
		Zone	Defects
		Zone A (0 - 25)	FAIL
		Zone B (25 - 120)	FAIL
		Zone C (120 - 130)	PASS

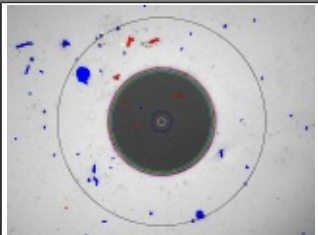
	<b>Fiber 2</b>  <b>FAIL</b>	SM UPC (IEC-61300-3-35) 8/19/2014 4:49:09 PM	
		Zone	Defects
		Zone A (0 - 25)	FAIL
		Zone B (25 - 120)	FAIL
		Zone C (120 - 130)	PASS

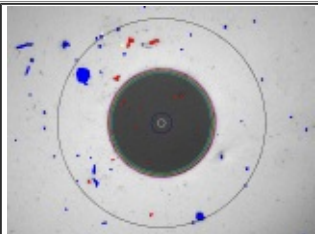
	<b>Fiber 3</b>  <b>FAIL</b>	SM UPC (IEC-61300-3-35) 8/19/2014 4:49:27 PM	
		Zone	Defects
		Zone A (0 - 25)	FAIL
		Zone B (25 - 120)	FAIL
		Zone C (120 - 130)	PASS

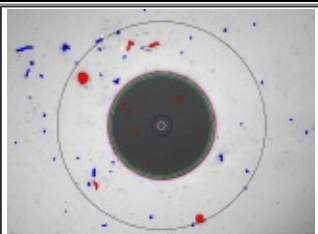
	<b>Fiber 4</b>  <b>FAIL</b>	SM UPC (IEC-61300-3-35) 8/19/2014 4:49:35 PM	
		Zone	Defects
		Zone A (0 - 25)	FAIL
		Zone B (25 - 120)	FAIL
		Zone C (120 - 130)	PASS

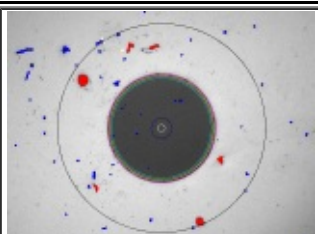
	<b>Fiber 5</b>  <b>FAIL</b>	SM UPC (IEC-61300-3-35) 8/19/2014 4:49:51 PM	
		Zone	Defects
		Zone A (0 - 25)	PASS
		Zone B (25 - 120)	FAIL
		Zone C (120 - 130)	PASS

	Fiber 6	SM UPC (IEC-61300-3-35) 8/19/2014 4:50:03 PM		
	<b>FAIL</b>	Zone	Defects	Scratches
		Zone A (0 - 25)	FAIL	FAIL
		Zone B (25 - 120)	FAIL	PASS
		Zone C (120 - 130)	PASS	PASS
Zone D (130 - 250)	FAIL	PASS		

	Fiber 7	SM UPC (IEC-61300-3-35) 8/19/2014 4:50:24 PM		
	<b>FAIL</b>	Zone	Defects	Scratches
		Zone A (0 - 25)	PASS	PASS
		Zone B (25 - 120)	FAIL	PASS
		Zone C (120 - 130)	PASS	PASS
Zone D (130 - 250)	FAIL	PASS		

	Fiber 8	SM UPC (IEC-61300-3-35) 8/19/2014 4:50:33 PM		
	<b>FAIL</b>	Zone	Defects	Scratches
		Zone A (0 - 25)	FAIL	PASS
		Zone B (25 - 120)	FAIL	PASS
		Zone C (120 - 130)	PASS	PASS
Zone D (130 - 250)	FAIL	PASS		

	Fiber 9	SM UPC (IEC-61300-3-35) 8/19/2014 4:50:44 PM		
	<b>FAIL</b>	Zone	Defects	Scratches
		Zone A (0 - 25)	FAIL	PASS
		Zone B (25 - 120)	FAIL	PASS
		Zone C (120 - 130)	PASS	PASS
Zone D (130 - 250)	FAIL	PASS		

	Fiber 10	SM UPC (IEC-61300-3-35) 8/19/2014 4:50:52 PM		
	<b>FAIL</b>	Zone	Defects	Scratches
		Zone A (0 - 25)	PASS	PASS
		Zone B (25 - 120)	PASS	PASS
		Zone C (120 - 130)	PASS	PASS
Zone D (130 - 250)	FAIL	PASS		

Inspection Date 8/19/2014 4:49:00 PM  
 Company Name  
 Location me  
 Operator fvf

Fiber Information

File Name jobdef - Fiber 1.HTML  
 Fiber Type Simplex  
 Job ID fdsd  
 Cable ID here  
 Connector ID blah  
 Fiber ID Fiber 1

**FAIL** ⊗

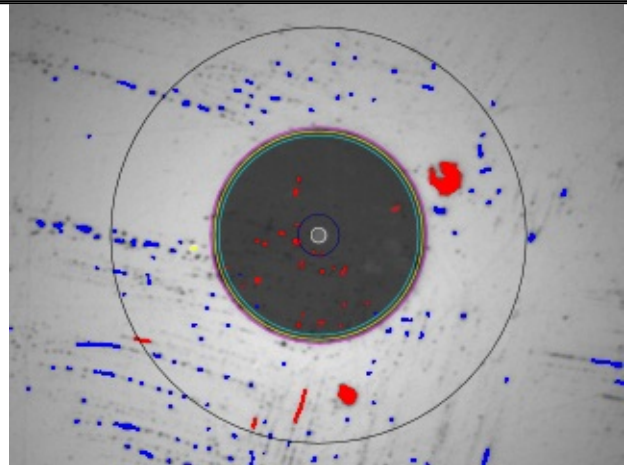
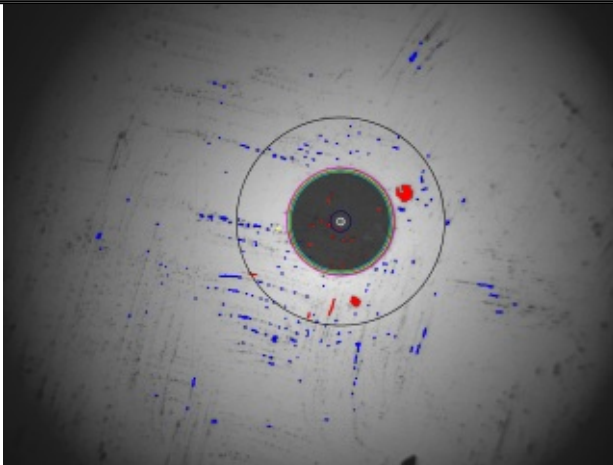
Inspection Summary

Profile Name SM UPC (IEC-61300-3-35)

Zone	Defects	Scratches
Zone A (0 - 25)	FAIL	PASS
Zone B (25 - 120)	FAIL	PASS
Zone C (120 - 130)	PASS	PASS
Zone D (130 - 250)	FAIL	PASS

Low Magnification

High Magnification



Analysis Details

Zone A: [DEFECTS] More than 0 defects.  
 Zone B: [DEFECTS] Defect > 5 μm, More than 5 defects > 2.0 μm in diameter.  
 Zone D: [DEFECTS] Defect > 10 μm.

Inspection Date 8/19/2014 4:49:09 PM  
 Company Name  
 Location me  
 Operator fvf

Fiber Information

File Name jobdef - Fiber 2.HTML  
 Fiber Type Simplex  
 Job ID fdsd  
 Cable ID here  
 Connector ID blah  
 Fiber ID Fiber 2

**FAIL** ⊗

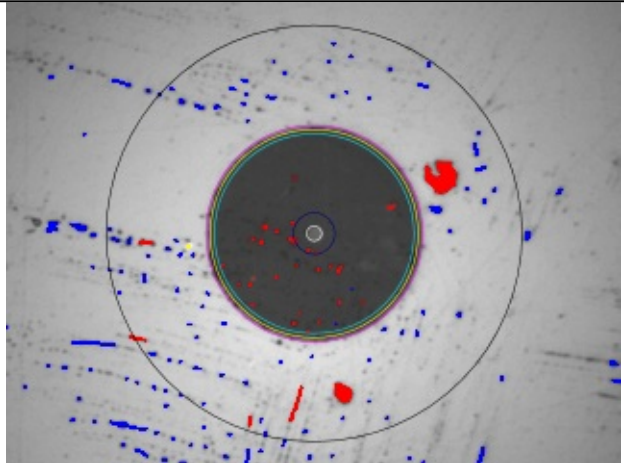
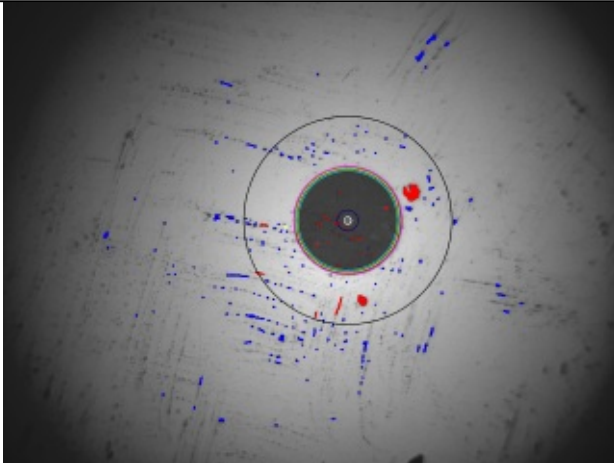
Inspection Summary

Profile Name SM UPC (IEC-61300-3-35)

Zone	Defects	Scratches
Zone A (0 - 25)	FAIL	PASS
Zone B (25 - 120)	FAIL	PASS
Zone C (120 - 130)	PASS	PASS
Zone D (130 - 250)	FAIL	PASS

Low Magnification

High Magnification



Analysis Details

Zone A: [DEFECTS] More than 0 defects.  
 Zone B: [DEFECTS] Defect > 5 μm, More than 5 defects > 2.0 μm in diameter.  
 Zone D: [DEFECTS] Defect > 10 μm.

Inspection Date 8/19/2014 4:49:27 PM  
 Company Name  
 Location me  
 Operator fvf

Fiber Information

File Name jobdef - Fiber 3.HTML  
 Fiber Type Simplex  
 Job ID fdsd  
 Cable ID here  
 Connector ID blah  
 Fiber ID Fiber 3

**FAIL** ⊗

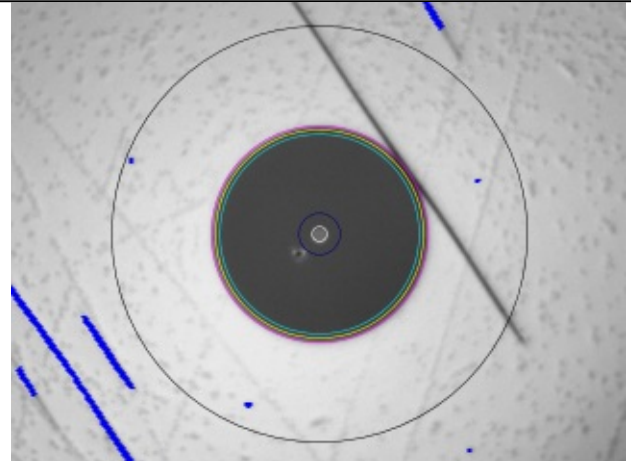
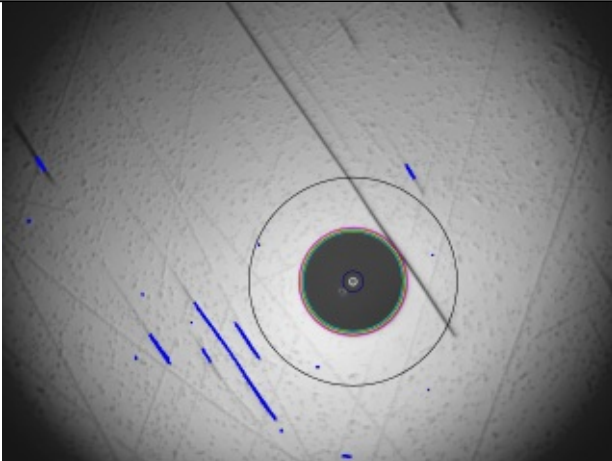
Inspection Summary

Profile Name SM UPC (IEC-61300-3-35)

Zone	Defects	Scratches
Zone A (0 - 25)	FAIL	PASS
Zone B (25 - 120)	FAIL	PASS
Zone C (120 - 130)	PASS	PASS
Zone D (130 - 250)	PASS	PASS

Low Magnification

High Magnification



Analysis Details

Zone A: [DEFECTS] More than 0 defects.  
 Zone B: [DEFECTS] Defect > 5 µm.

Inspection Date 8/19/2014 4:49:35 PM  
 Company Name  
 Location me  
 Operator fvf

Fiber Information

File Name jobdef - Fiber 4.HTML  
 Fiber Type Simplex  
 Job ID fdsd  
 Cable ID here  
 Connector ID blah  
 Fiber ID Fiber 4

**FAIL** ⊗

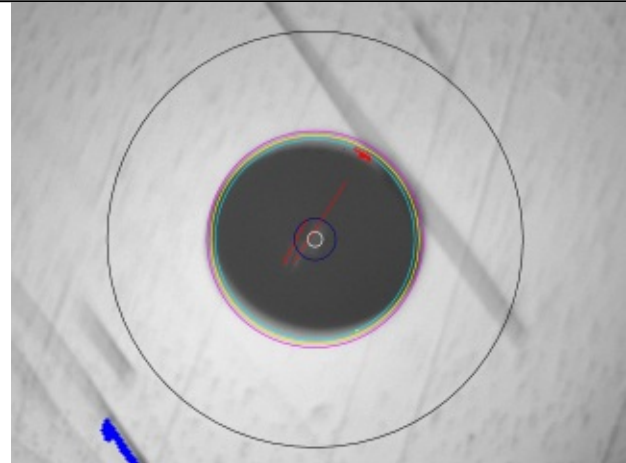
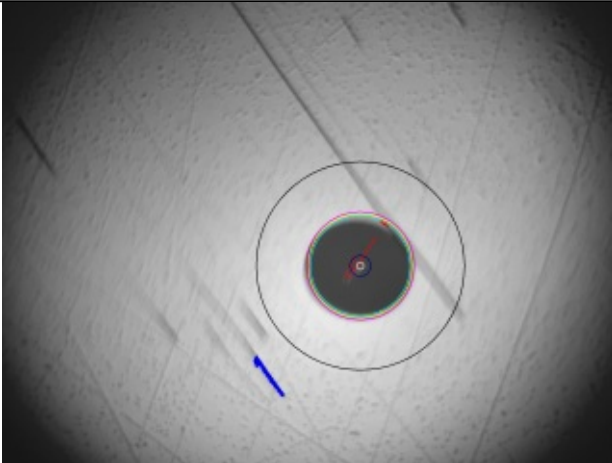
Inspection Summary

Profile Name SM UPC (IEC-61300-3-35)

Zone	Defects	Scratches
Zone A (0 - 25)	FAIL	FAIL
Zone B (25 - 120)	FAIL	PASS
Zone C (120 - 130)	PASS	PASS
Zone D (130 - 250)	PASS	PASS

Low Magnification

High Magnification



Analysis Details

Zone A: [DEFECTS] More than 0 defects, [SCRATCHES] More than 0 scratches.  
 Zone B: [DEFECTS] Defect > 5 μm.

Inspection Date 8/19/2014 4:49:51 PM  
 Company Name  
 Location me  
 Operator fvf

Fiber Information

File Name jobdef - Fiber 5.HTML  
 Fiber Type Simplex  
 Job ID fdsd  
 Cable ID here  
 Connector ID blah  
 Fiber ID Fiber 5

**FAIL** ⊗

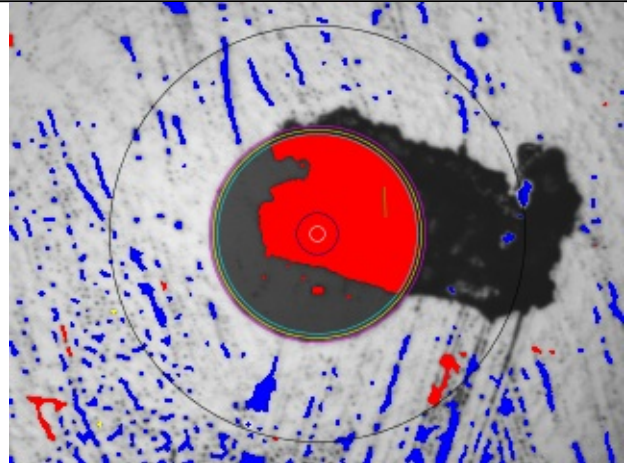
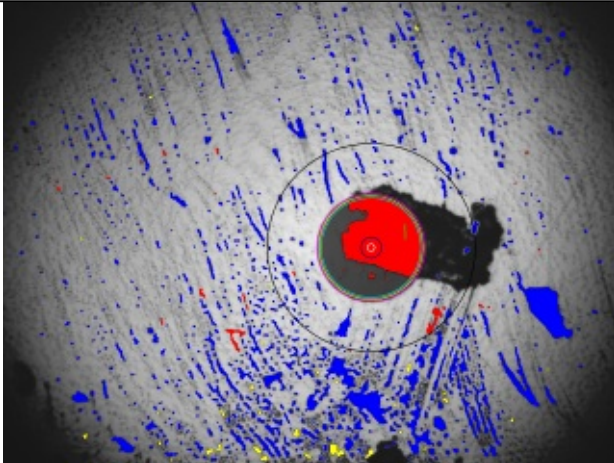
Inspection Summary

Profile Name SM UPC (IEC-61300-3-35)

Zone	Defects	Scratches
Zone A (0 - 25)	PASS	FAIL
Zone B (25 - 120)	FAIL	FAIL
Zone C (120 - 130)	PASS	PASS
Zone D (130 - 250)	FAIL	PASS

Low Magnification

High Magnification



Analysis Details

Zone A: [SCRATCHES] More than 0 scratches.  
 Zone B: [DEFECTS] Defect > 5 µm, More than 5 defects > 2.0 µm in diameter, [SCRATCHES] Scratch width > 3.0 µm.  
 Zone D: [DEFECTS] Defect > 10 µm.



Inspection Date 8/19/2014 4:50:03 PM  
 Company Name  
 Location me  
 Operator fvf

Fiber Information

File Name jobdef - Fiber 6.HTML  
 Fiber Type Simplex  
 Job ID fdsd  
 Cable ID here  
 Connector ID blah  
 Fiber ID Fiber 6

**FAIL** ⊗

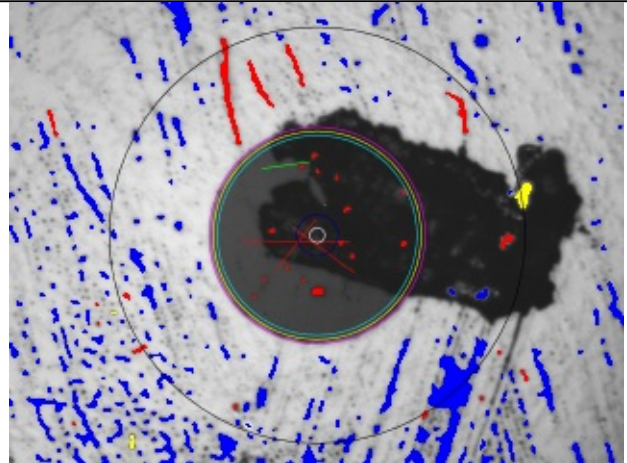
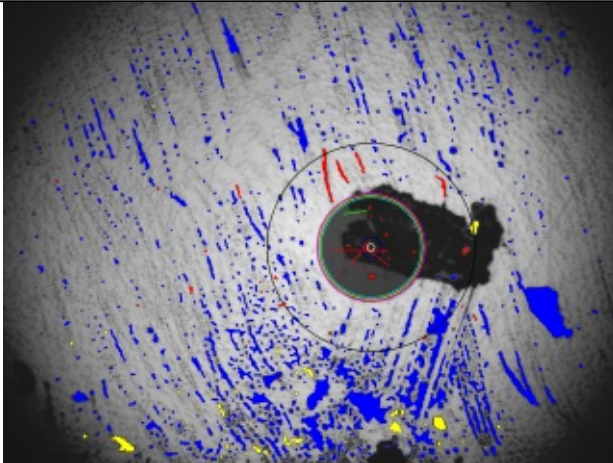
Inspection Summary

Profile Name SM UPC (IEC-61300-3-35)

Zone	Defects	Scratches
Zone A (0 - 25)	FAIL	FAIL
Zone B (25 - 120)	FAIL	PASS
Zone C (120 - 130)	PASS	PASS
Zone D (130 - 250)	FAIL	PASS

Low Magnification

High Magnification



Analysis Details

Zone A: [DEFECTS] More than 0 defects, [SCRATCHES] More than 0 scratches.  
 Zone B: [DEFECTS] Defect > 5 µm, More than 5 defects > 2.0 µm in diameter.  
 Zone D: [DEFECTS] Defect > 10 µm.

**Inspection Date** 8/19/2014 4:50:24 PM  
**Company Name**  
**Location** me  
**Operator** fvf

**Fiber Information**

**File Name** jobdef - Fiber 7.HTML  
**Fiber Type** Simplex  
**Job ID** fdsd  
**Cable ID** here  
**Connector ID** blah  
**Fiber ID** Fiber 7

**FAIL** ⊗

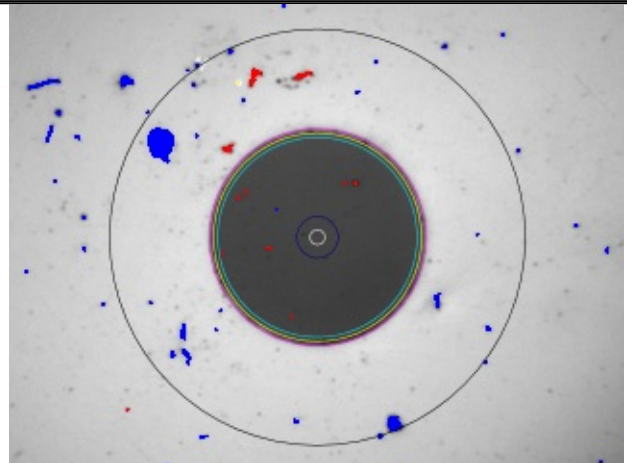
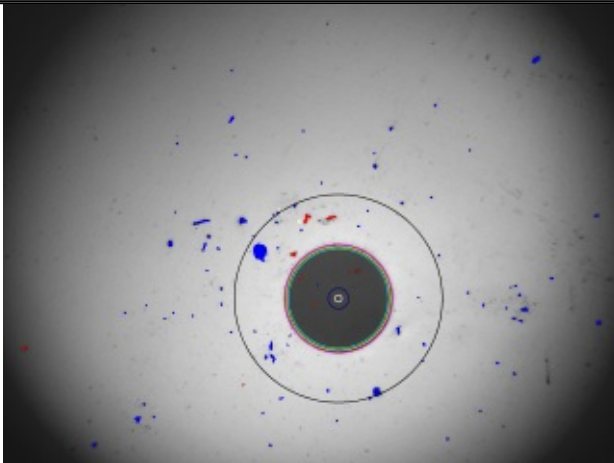
**Inspection Summary**

**Profile Name** SM UPC (IEC-61300-3-35)

Zone	Defects	Scratches
Zone A (0 - 25)	PASS	PASS
Zone B (25 - 120)	FAIL	PASS
Zone C (120 - 130)	PASS	PASS
Zone D (130 - 250)	FAIL	PASS

Low Magnification

High Magnification



**Analysis Details**

Zone B: [DEFECTS] More than 5 defects > 2.0 μm in diameter.  
 Zone D: [DEFECTS] Defect > 10 μm.

Inspection Date 8/19/2014 4:50:33 PM  
 Company Name  
 Location me  
 Operator fvf

Fiber Information

File Name jobdef - Fiber 8.HTML  
 Fiber Type Simplex  
 Job ID fdsd  
 Cable ID here  
 Connector ID blah  
 Fiber ID Fiber 8

**FAIL** ⊗

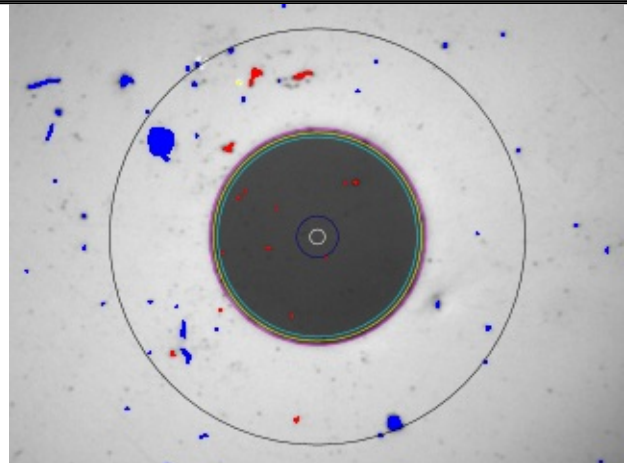
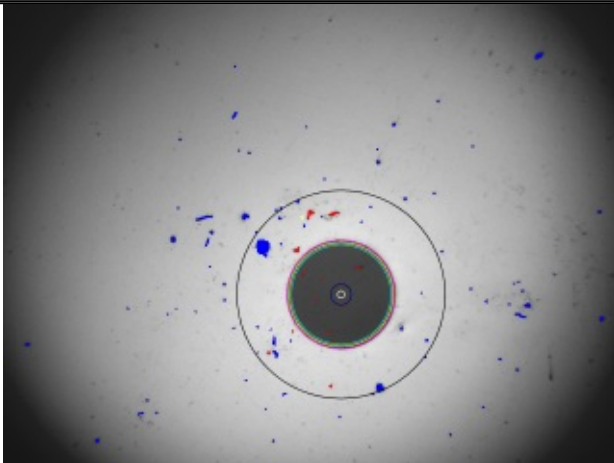
Inspection Summary

Profile Name SM UPC (IEC-61300-3-35)

Zone	Defects	Scratches
Zone A (0 - 25)	FAIL	PASS
Zone B (25 - 120)	FAIL	PASS
Zone C (120 - 130)	PASS	PASS
Zone D (130 - 250)	FAIL	PASS

Low Magnification

High Magnification



Analysis Details

Zone A: [DEFECTS] More than 0 defects.  
 Zone B: [DEFECTS] More than 5 defects > 2.0 μm in diameter.  
 Zone D: [DEFECTS] Defect > 10 μm.

Inspection Date 8/19/2014 4:50:44 PM  
 Company Name  
 Location me  
 Operator fvf

Fiber Information

File Name jobdef - Fiber 9.HTML  
 Fiber Type Simplex  
 Job ID fdsd  
 Cable ID here  
 Connector ID blah  
 Fiber ID Fiber 9

**FAIL** ⊗

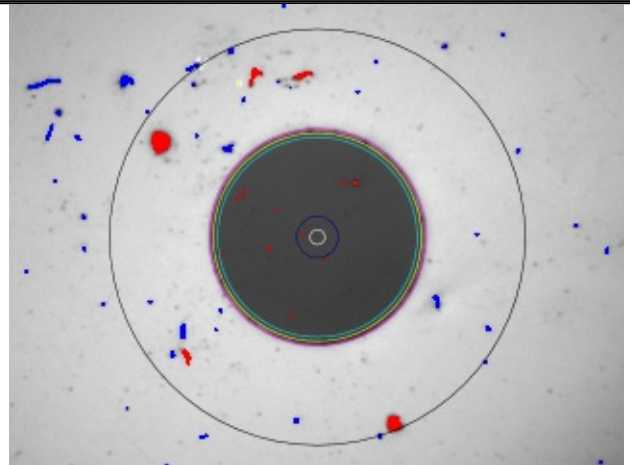
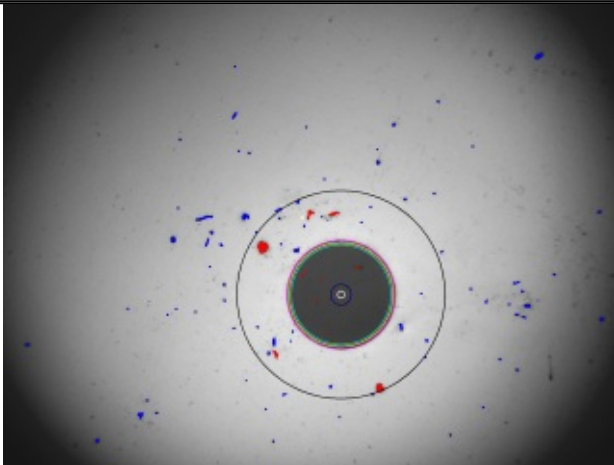
Inspection Summary

Profile Name SM UPC (IEC-61300-3-35)

Zone	Defects	Scratches
Zone A (0 - 25)	FAIL	PASS
Zone B (25 - 120)	FAIL	PASS
Zone C (120 - 130)	PASS	PASS
Zone D (130 - 250)	FAIL	PASS

Low Magnification

High Magnification



Analysis Details

Zone A: [DEFECTS] More than 0 defects.  
 Zone B: [DEFECTS] More than 5 defects > 2.0 μm in diameter.  
 Zone D: [DEFECTS] Defect > 10 μm.

**Inspection Date** 8/19/2014 4:50:52 PM  
**Company Name**  
**Location** me  
**Operator** fvf

**Fiber Information**

**File Name** jobdef - Fiber 10.HTML  
**Fiber Type** Simplex  
**Job ID** fdsd  
**Cable ID** here  
**Connector ID** blah  
**Fiber ID** Fiber 10

**FAIL** ⊗

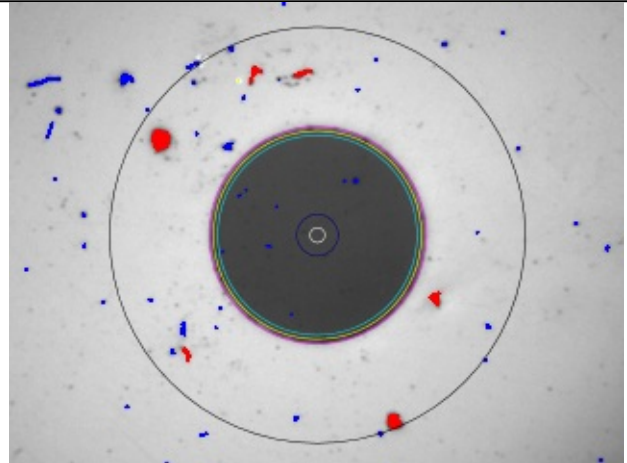
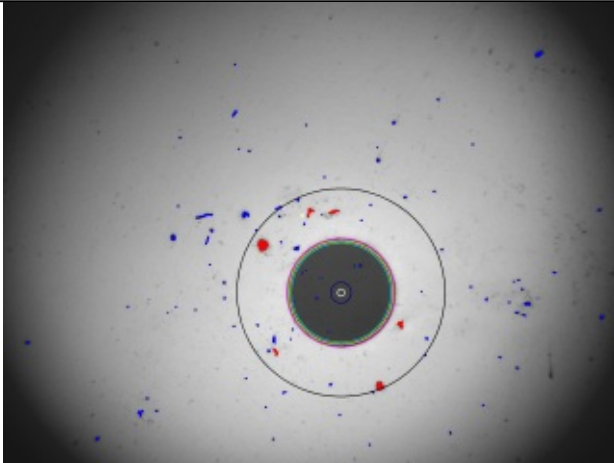
**Inspection Summary**

**Profile Name** SM UPC (IEC-61300-3-35)

Zone	Defects	Scratches
Zone A (0 - 25)	PASS	PASS
Zone B (25 - 120)	PASS	PASS
Zone C (120 - 130)	PASS	PASS
Zone D (130 - 250)	FAIL	PASS

**Low Magnification**

**High Magnification**



**Analysis Details**

Zone D: [DEFECTS] Defect > 10 µm.