



## ONMSi 2.92 – Release Note

---

**ONMSi V2.92**

**Release Note**

Author(s) : Jean Ponchon  
File name : Release Note ONMSi 2.92 Rev2.doc  
Creation date: 04/02/2016  
Last modification : 06/12/2016



# ONMSi 2.92 – Release Note

## CONTENTS

<b>1. ONMSi 2.92 REVISION 1</b>	<b>5</b>
<b>1.1 ONMSi 2.92 REVISION 1</b>	<b>5</b>
1.1.1 SW IMPROVEMENTS:	5
1.1.2 BUG FIXING	5
1.1.3 REMARKS	5
<b>1.2 ONMSi TOOLS 1.34.2.0</b>	<b>5</b>
1.2.1 SW IMPROVEMENTS	5
1.2.2 BUG FIXING	6
1.2.3 REMARKS	6
<b>1.3 OFM 3.72</b>	<b>6</b>
1.3.1 SW IMPROVEMENTS	6
1.3.2 BUG FIXING	6
1.3.3 REMARKS	6
<b>1.4 EOTU8000E – E98OTU-FP-RF 6.26</b>	<b>6</b>
1.4.1 SW IMPROVEMENTS:	6
1.4.2 BUG FIXING	6
1.4.3 REMARKS	6
<b>2. ONMSi 2.92 REVISION 2</b>	<b>7</b>
<b>2.1 OTU8000 3.36</b>	<b>7</b>
2.1.1 BUGS FIXING	7
<b>2.2 EOTU8000E – E98OTU-FP-RF 6.28</b>	<b>7</b>
2.2.1 BUG FIXING	7
<b>3. SOFTWARE COMPATIBILITY</b>	<b>8</b>
<b>3.1 REVISION 1</b>	<b>8</b>
<b>3.2 REVISION 2</b>	<b>9</b>
<b>4. SOFTWARE UPGRADE</b>	<b>10</b>
<b>4.1 ONMSi ON ACTIVE SERVER</b>	<b>10</b>
4.1.1 CLEAN OLD BUDGETS	11
4.1.1 BEFOREUPDATE	12
4.1.2 UNINSTALL ONMSi	12
4.1.3 UNINSTALL JERICHO	13



# ONMSi 2.92 – Release Note

---

4.1.4	ONMSi INSTALLATION	14
<b>4.2</b>	<b>ONMSi TOOLS ON ACTIVE SERVER</b>	<b>19</b>
4.2.1	INSTALLATION	19
4.2.2	BACKUP	20
<b>4.3</b>	<b>ONMSi TOOLS ON PASSIVE SERVER</b>	<b>21</b>
4.3.1	INSTALLATION	21
4.3.2	REBUILD STANDBY	22
<b>4.4</b>	<b>ONMSi ON PASSIVE SERVER</b>	<b>22</b>
<b>4.5</b>	<b>JERICHO</b>	<b>22</b>
<b>4.6</b>	<b>OTU</b>	<b>23</b>
<b>4.7</b>	<b>DATABASE INTEGRITY CHECK</b>	<b>23</b>



## ONMSi 2.92 – Release Note

---

Version	Date	Author	Index	Main Improvement
2.92	04 Nov 16	J. Ponchon	Revision 1	ONMSi v2.92 ONMSi Tools v1.34.2 OFM v3.72 OTU8000 v6.26
2.92	6 Dec 16	J. Ponchon	Revision 2	ONMSi v2.92 ONMSi Tools v1.34.2 OFM v3.72 OTU8000 v3.36 OTU8000E/ E980TU-FP-RF v6.28

# ONMSi 2.92 – Release Note

---

## 1. ONMSi 2.92 Revision 1

### 1.1 ONMSi 2.92 Revision 1

#### 1.1.1 SW Improvements:

- ONMSi must not be vulnerable to CSRF (aka XSRF)
- EPT#6050 Audit log file in read access (case 00545537)
- **EPT#6106 Formatted text in landmark table comment column**

#### 1.1.2 BUG Fixing

- EPT#6125 Link with patchcords is now highlighted up to the end on ONMSi map
- EPT#6092 Fix level values of markers A&B in the TraceViewer
- EPT#6080 API alarm event blocked for link with OFM
- EPT#6076 Wrong name for alarm detection trace
- EPT#6057 Error message when creating link
- EPT#6056 With very long link name, edit button disappear
- EPT#6019 Optical alarm event detail with wrong description
- EPT#6143 Fix Traceviewer Zoom In with Mouse wheel with IE
- EPT#6142 Fix Defaut Monitoring when creating a new test
- EPT#6135 Fix download traces tables as PDF/Excel from test configuration screen
- EPT#6132 Fix search that shows only 10 results
- EPT#6116 Report generation crash
- EPT#6153 Fix Landmark display on the OTDR trace

#### 1.1.3 Remarks

Compatible with

- OTU8000 >= 3.24
- OTU8000e >= 5.04

### 1.2 ONMSi Tools 1.34.2.0

#### 1.2.1 SW Improvements

- Dashboard only refreshed on change
- EPT 5959: OTU visibility improvement
- EPT 6074: Cygwin shortcut again on desktop
- EPT 6075: Added database corrupted block detection
  - ONMSi alarm new database backup additional text: ERROR\_CODE:CORRUPTED
  - Backup stopped when detecting corrupted blocks

# ONMSi 2.92 – Release Note

---

## 1.2.2 BUG Fixing

## 1.2.3 Remarks

## 1.3 OFM 3.72

### 1.3.1 SW Improvements

Compatibility with ONMSi 2.92

### 1.3.2 BUG Fixing

- #5744 No alarm in OFM when alarm is localized on a patch cord
- Excel import stopped after first line containing an empty first cell

### 1.3.3 Remarks

Client stations do not need to upgrade if they are in version 3.

## 1.4 EOTU8000E – E98OTU-FP-RF 6.26

### 1.4.1 SW Improvements:

- 

### 1.4.2 BUG Fixing

- EPT#5901: Changing the scheduling of a test in alarm must not clear the alarm
- EPT#5893: On demand measurement has the highest priority even when time slots are used
- EPT#5923: PON test and PON measurement failure crash the OTU.
- EPT#5967: OTU Link not monitored does not report any alarm.
- EPT#6117: Strange effect on OTDR Trace with E8118RUHR65 OTDR
- EPT#6046: FO crash with module C tri-lambda

### 1.4.3 Remarks

Compatible with

- ONMSi  $\geq$  2.70



# ONMSi 2.92 – Release Note

---

## 2. ONMSi 2.92 Revision 2

### 2.1 *OTU8000 3.36*

#### 2.1.1 Bugs fixing

EPT 6137: Alarm injection not visible from fiber budget chart

EPT 6097: Wrong Switch topology applied after a reboot when an external switch has failed

### 2.2 *EOTU8000E – E98OTU-FP-RF 6.28*

#### 2.2.1 BUG Fixing

SSH Incompatibility with ONMSi <=2.80

# ONMSi 2.92 – Release Note

## 3. Software compatibility

**This compatibility table must be strictly respected.**

### 3.1 Revision 1

Date	November 2016
Revision	<b>1</b>
OS for server	64-bits Windows Server 2008 R2 Standard SP1 or Enterprise SP1 64-bits Windows Server 2012 R2 Standard or Enterprise
Oracle	11G
ONMSi	<b>2.92.0.0</b>
Browser	Internet Explorer 9 Minimum, 11 or above Recommended Firefox 10 or above Google Chrome 16 or above
ONMSi Tools	<b>1.34.2.0</b>
OFM server	<b>3.72.0.0</b>
OFM client	>= 3.70.x / 3.70.2.2
Jericho	4 build 41 only needed with E9iSMSModem
OTU8000	>= 3.24 / <b>3.34</b>
OTU8000 boot	4.00
OTU8000 rescue	<b>3.34</b>
OTU8000e	>= 5.04 / <b>6.26</b>
OTU8000e rescue	<b>6.26</b>

### Legend

New release displayed in **bold**

Dependency software displayed with same colour (except black)

### Software version description

Most of our applications releases contain 4 digits.

- First digit = Major design change
- Second digit = New features , improvements
- Third digit = Maintenance patch
- Fourth digit = Reserved VIAVI (build)



# ONMSi 2.92 – Release Note

## 3.2 Revision 2

Date	November 2016
Revision	<b>1</b>
OS for server	64-bits Windows Server 2008 R2 Standard SP1 or Enterprise SP1 64-bits Windows Server 2012 R2 Standard or Enterprise
Oracle	11G
ONMSi	<b>2.92.0.0</b>
Browser	Internet Explorer 9 Minimum, 11 or above Recommended Firefox 10 or above Google Chrome 16 or above
ONMSi Tools	<b>1.34.2.0</b>
OFM server	<b>3.72.0.0</b>
OFM client	>= 3.70.x / 3.70.2.2
Jericho	4 build 41 only needed with E9iSMSModem
OTU8000	>= 3.24 / <b>3.36</b>
OTU8000 boot	4.00
OTU8000 rescue	<b>3.36</b>
OTU8000e	>= 5.04 / <b>6.28</b>
OTU8000e rescue	<b>6.28</b>

### Legend

New release displayed in **bold**

Dependency software displayed with same colour (except black)

### Software version description

Most of our applications releases contain 4 digits.

- First digit = Major design change
- Second digit = New features , improvements
- Third digit = Maintenance patch
- Fourth digit = Reserved VIAVI (build)

# ONMSi 2.92 – Release Note

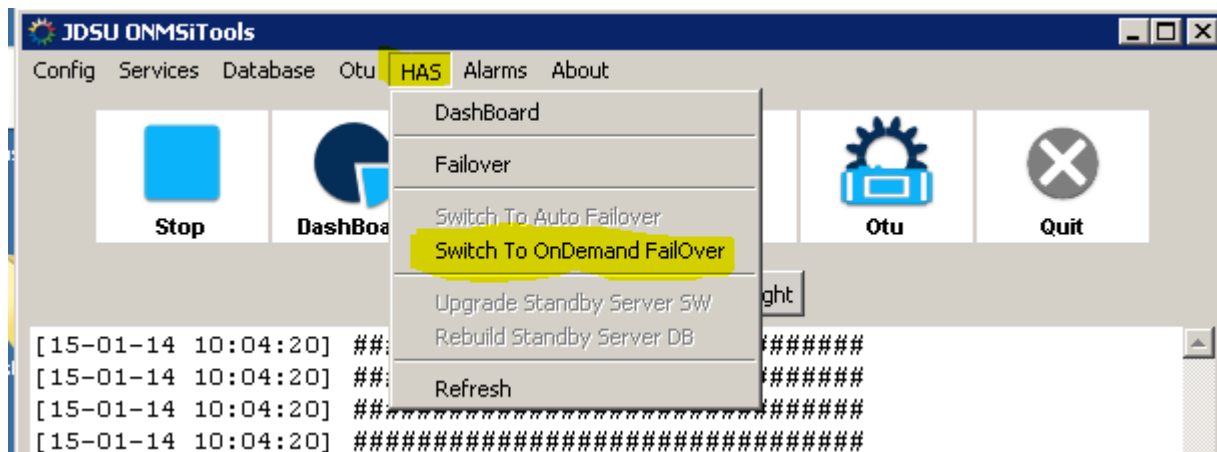
## 4. Software upgrade

Don't forget to request licenses before starting any upgrade.

**For system with backup server, active server must be upgraded first.**

### 4.1 ONMSi on active server

For system with backup, ensure system is configured on "ondemandfailover". If not switch system to this mode.

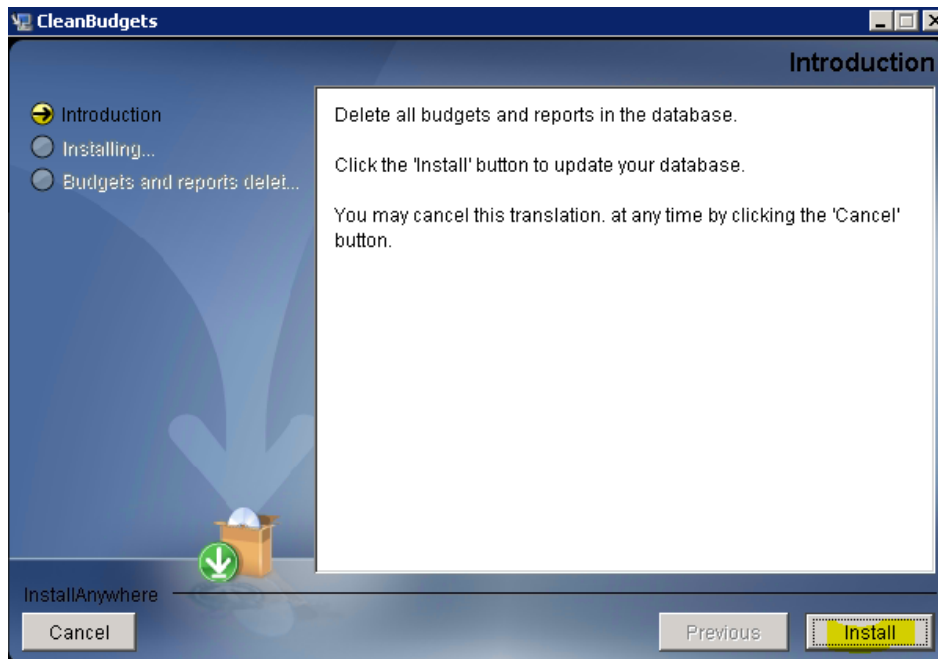
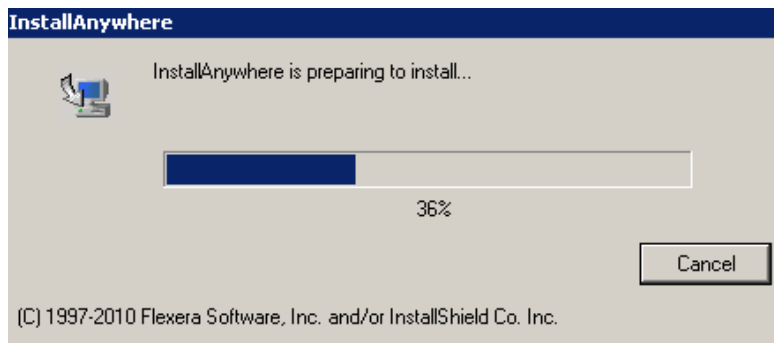


Role	active	Partition C	Use 66% Avail 20GB	Last refresh	07/08/15 09:29:25
Mode	cluster	Partition E	Use 65% Avail 35GB	ToolKit Version	1.30.0.0
Config	ondemandfailover			ToolKit Snmp	

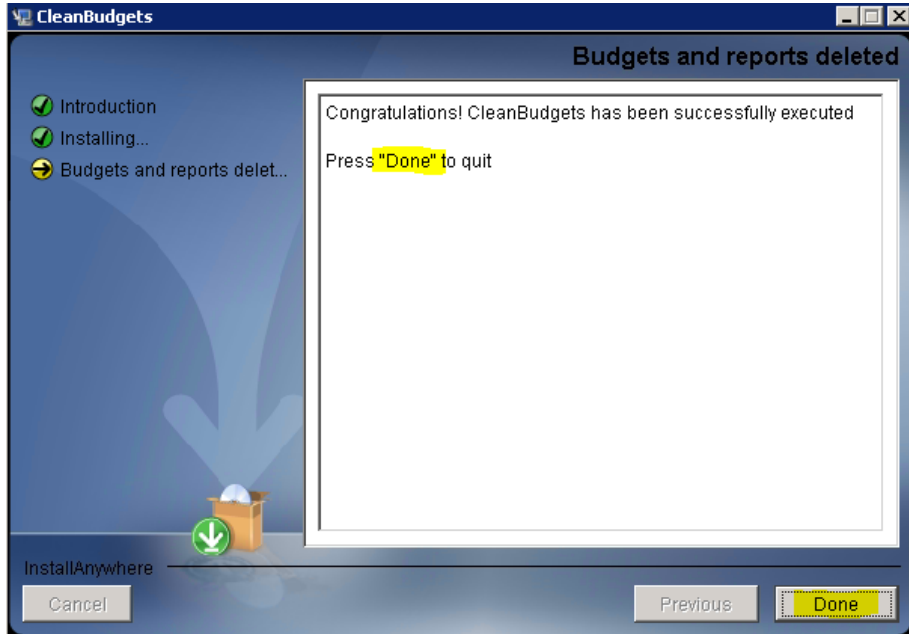
# ONMSi 2.92 – Release Note

## 4.1.1 Clean Old budgets

For upgrade from version 2.5x or lower, execute the program c:\workshop\CleanBudgets.exe to delete old corrupted budgets.



# ONMSi 2.92 – Release Note



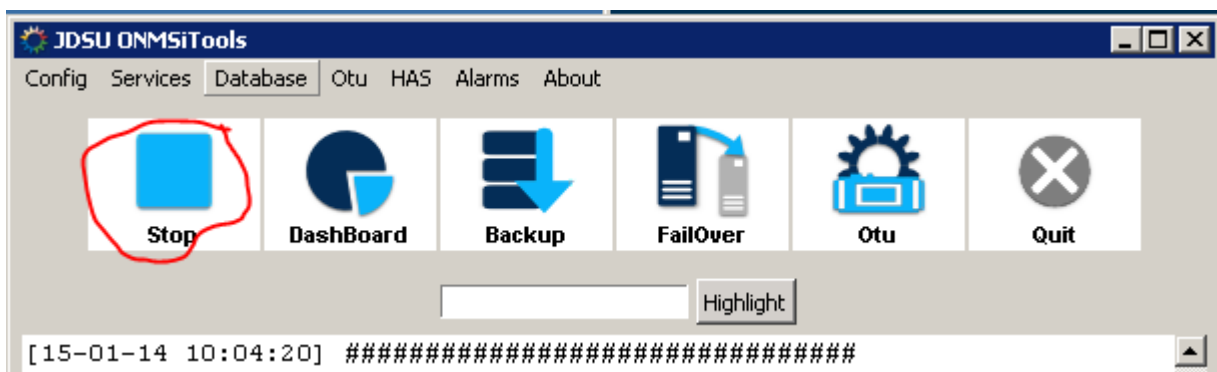
## 4.1.1 Beforeupdate

We noticed one issue upgrading from old version (2.60) to 2.90 which stopped the upgrade.

Execute this program to prevent that problem. \Tools\BeforeUpgrade.exe

## 4.1.2 Uninstall ONMSi

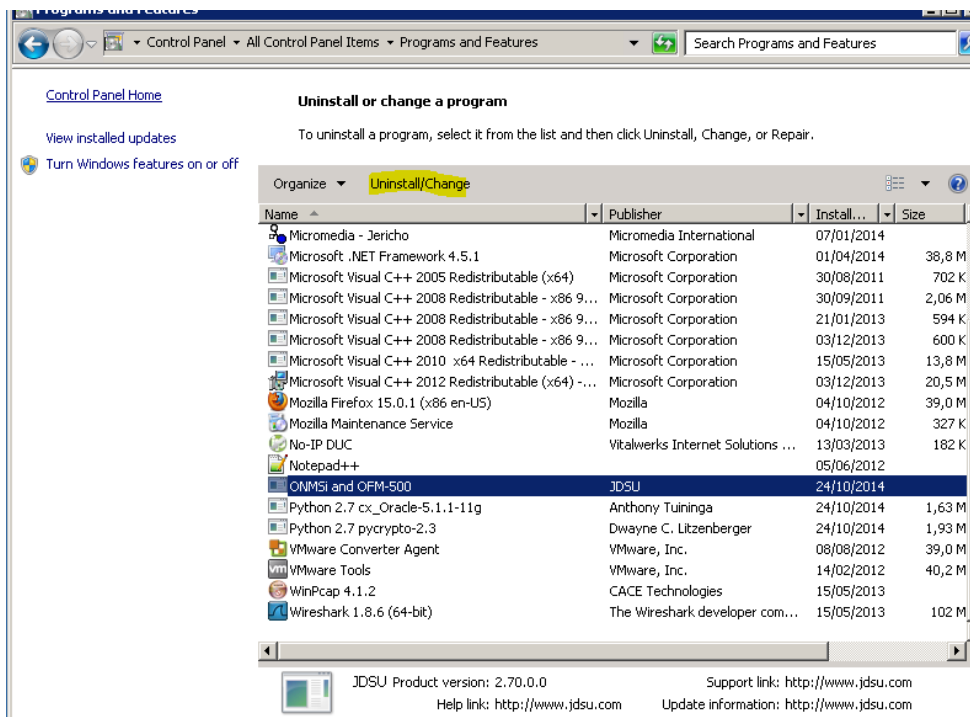
Stop services.



# ONMSi 2.92 – Release Note



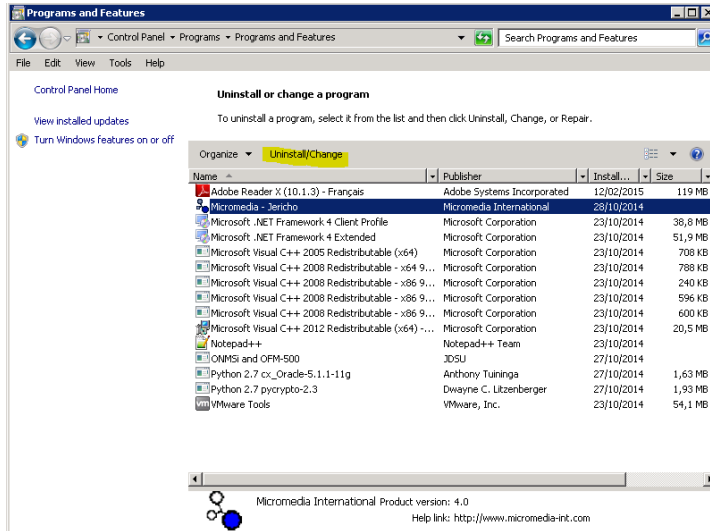
From Control panel menu, uninstall the ONMSi application



## 4.1.3 Uninstall Jericho

If you do not use GSM modem for SMS it is recommended to uninstall Jericho

# ONMSi 2.92 – Release Note



By the end of uninstallation **Reboot server**

## 4.1.4 ONMSi installation

ONMSi and OFM-500 are both installed with only one setup. OFM is installed only if OFM option is activated in the licence key.

From the DVD: \RFTS\_RevX\OFM\_V3.x\_and\_ONMSi\_V2.xx\ONMSi-OFM-500\

Launch the installed **ONMSi-OFM-500-setup.exe**

InstData	10/12/2011 3:08 PM	Dos:
checkIntegrity.cmd	8/4/2011 1:30 PM	Script
hashdeep.exe	5/24/2011 1:32 PM	App
onmsi_ofm500.md5	10/4/2011 9:40 AM	File
<b>ONMSi-OFM-500-setup.exe</b>	10/3/2011 3:10 PM	App

On the security message click on **Yes** to start the installation process.

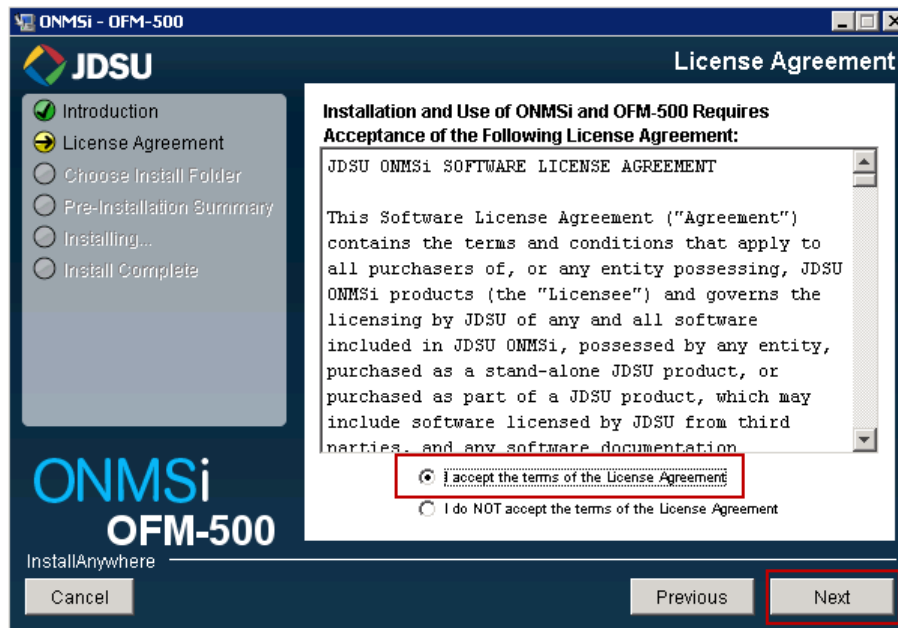
Click on **Next**

# ONMSi 2.92 – Release Note



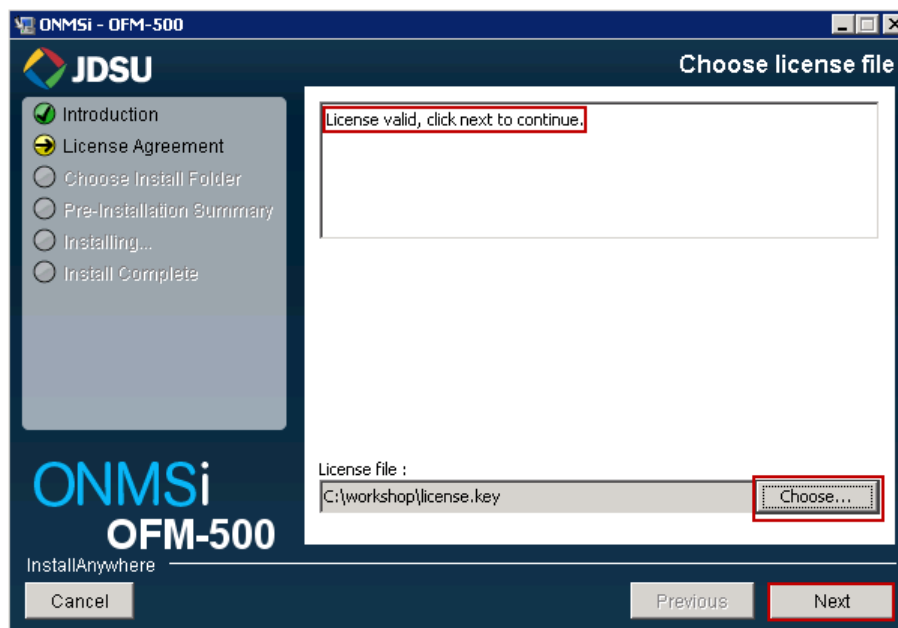
# ONMSi 2.92 – Release Note

Click on **I accept** and click on **Next**



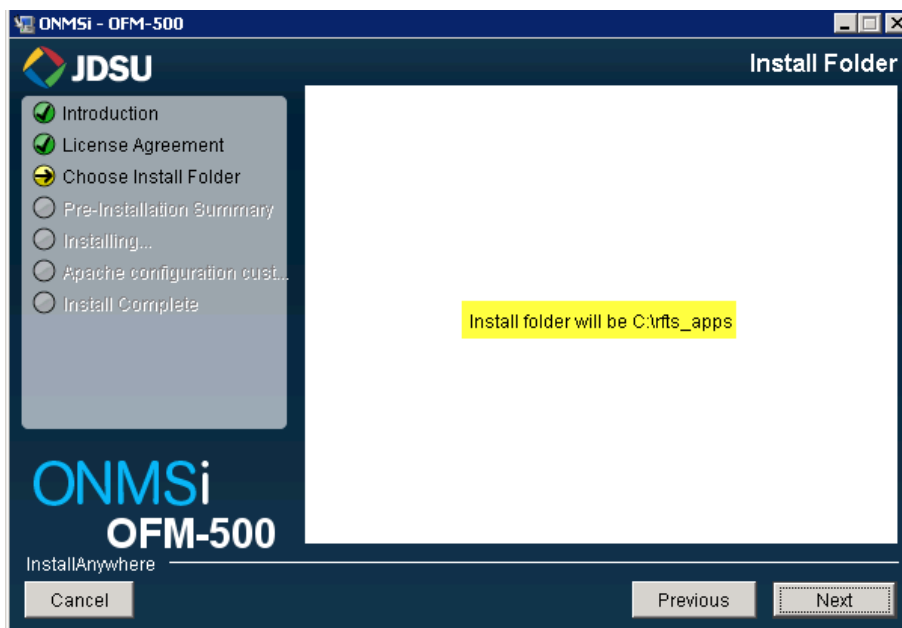
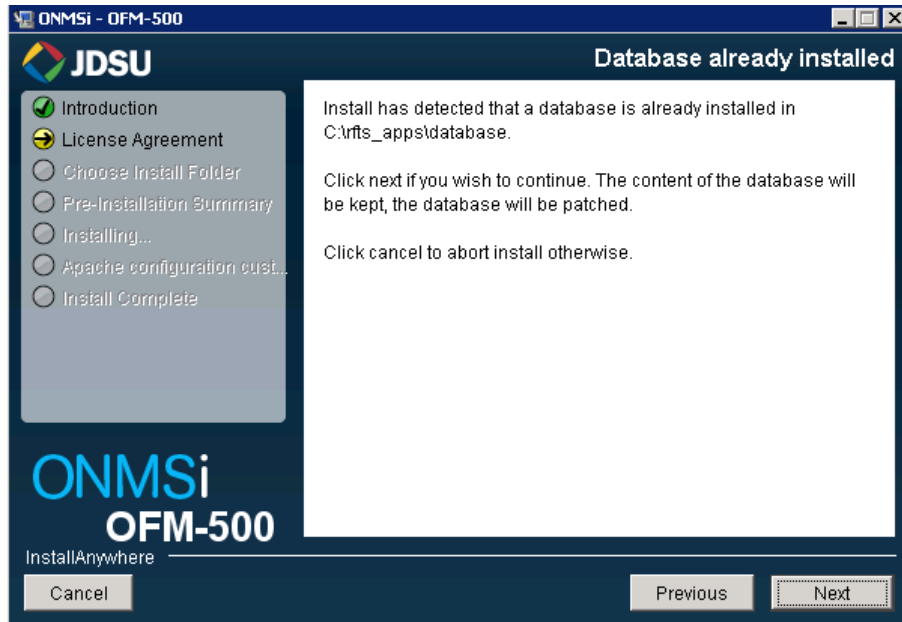
Click on **Choose** to select your licence file

You must see Licence valid to be able to click on **Next**

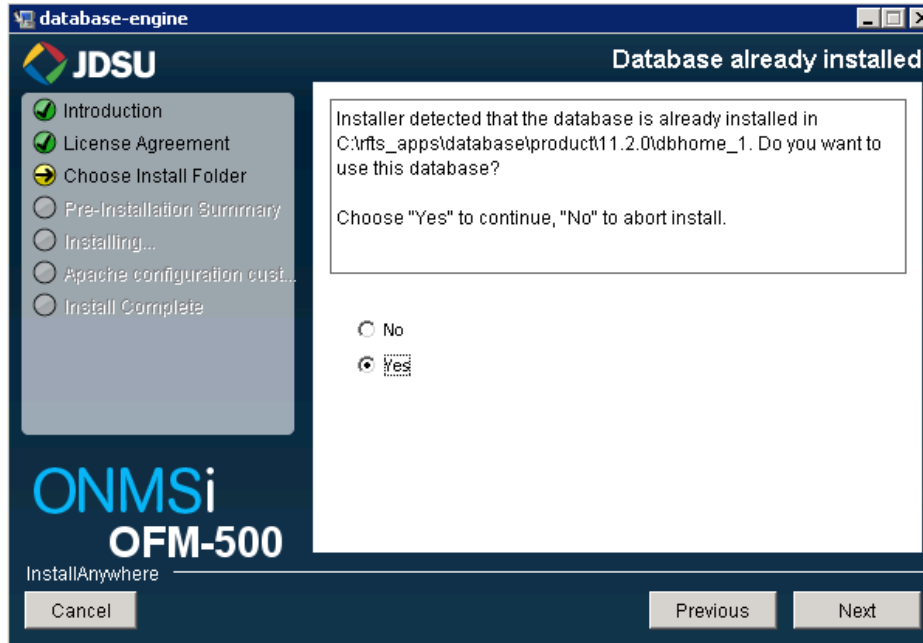




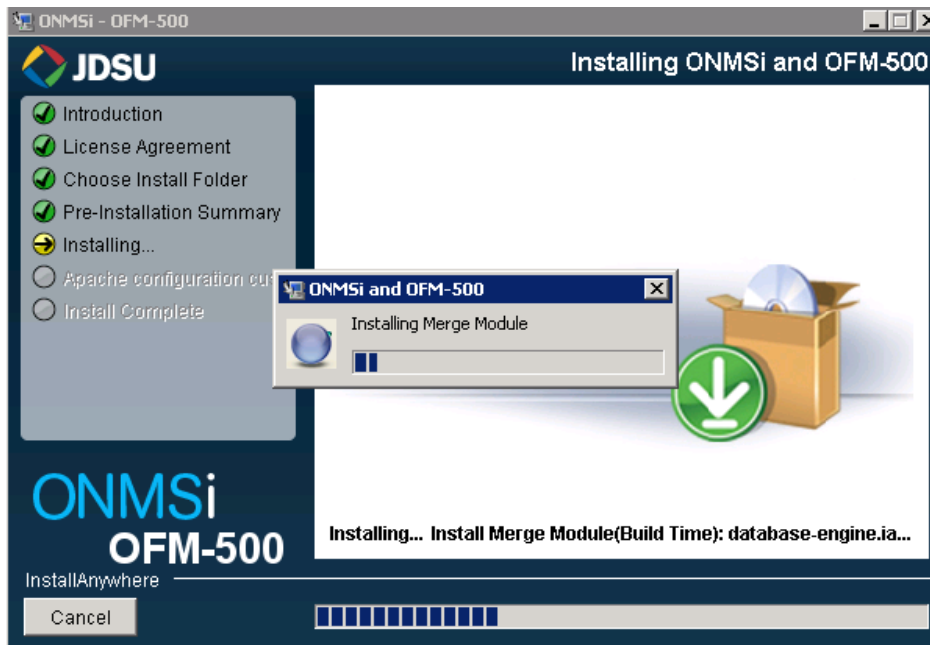
# ONMSi 2.92 – Release Note



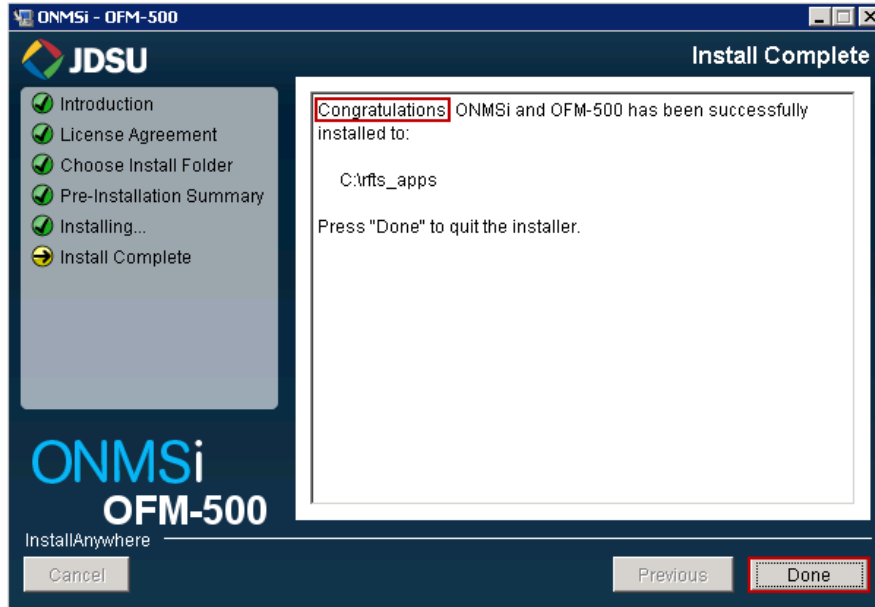
# ONMSi 2.92 – Release Note



Select Yes and click on Next



# ONMSi 2.92 – Release Note



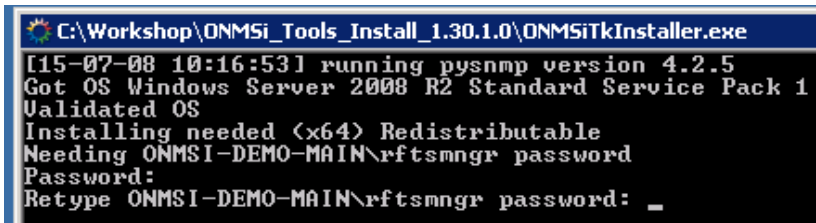
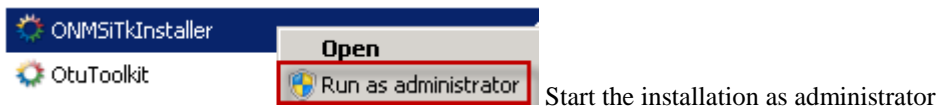
The **OFM software** has been installed during the ONMSi installation according to the licence generate by the Division

## 4.2 ONMSi Tools on active server

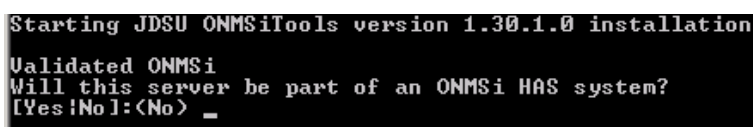
### 4.2.1 Installation

Install over the existing one on active server.

From the ONMSi DVD run ONMSiTkInstaller.exe



confirm it enter rftsmngr password and



type Yes if you have a standby server

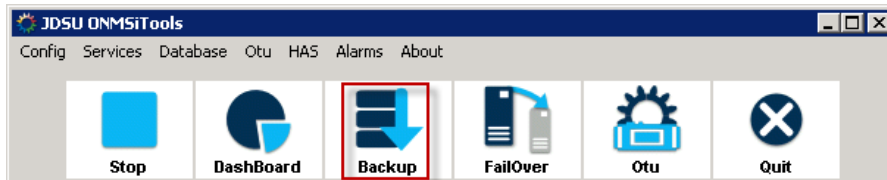
# ONMSi 2.92 – Release Note

```
Found a previous installation in c:\RFTS_SCRIPTS:
Install on c:?
[Yes;No]:<Yes> _
```

```
Successfully installed JDSU ONMSiTools version 1.30.1.0
Reboot might be needed
Type Return to exit_
```

## 4.2.2 Backup

Force "Backup" after ONMSi tools installed.

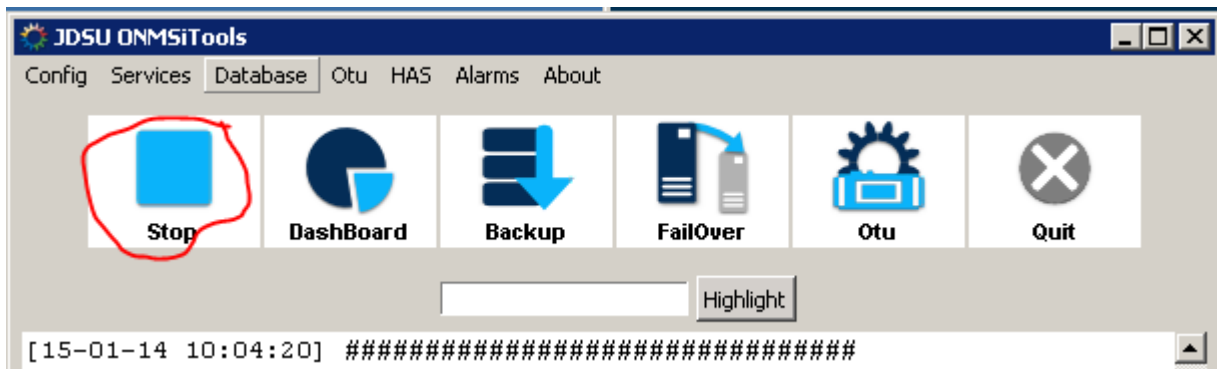


# ONMSi 2.92 – Release Note

## 4.3 ONMSi Tools on passive server

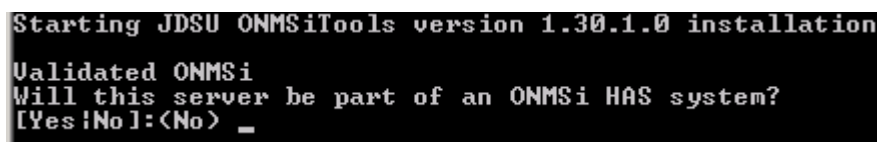
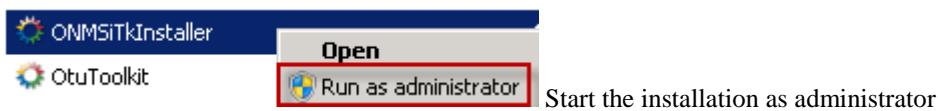
### 4.3.1 Installation

Stop services.



Install over the existing one on active server.

From the ONMSi DVD run ONMSiTkInstaller.exe

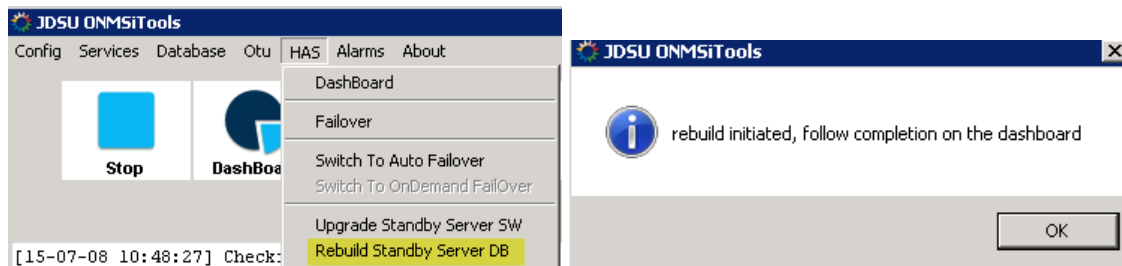


Enter Yes

# ONMSi 2.92 – Release Note

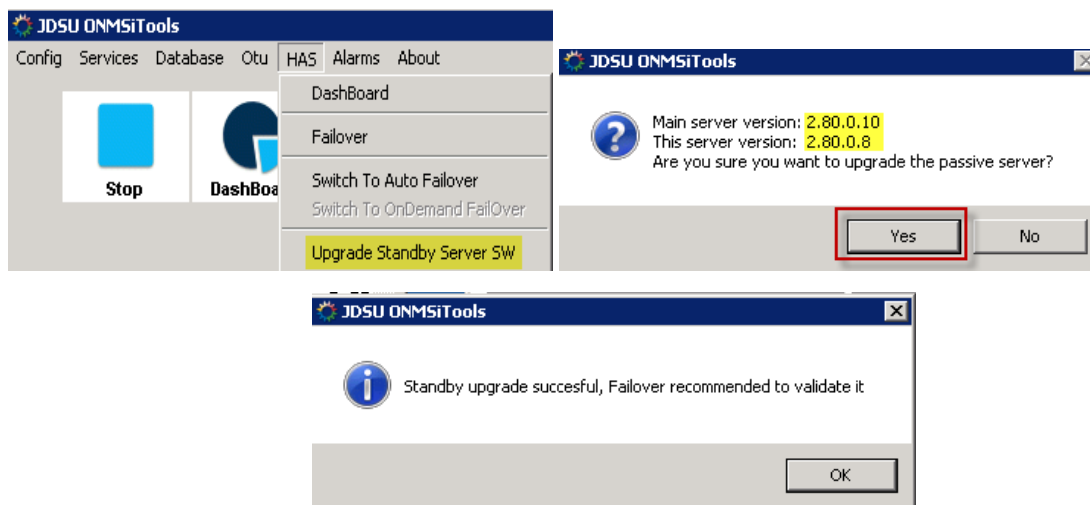
## 4.3.2 Rebuild standby

For system with HAS option force "Rebuild Standby server"



## 4.4 ONMSi on passive server

Use the toolkit / HAS / Upgrade Standby Server option to upgrade all application. No need to upgrade Mapserver config, database ...



On the backup server, delete the following files if they still exist:

C:\rfts\_apps\jboss\standalone\deployments\topaz-ear-2.80.1.0.ear.dodeploy  
 C:\rfts\_apps\jboss\standalone\deployments\topaz-standard-reports-2.80.1.0.sar.dodeploy  
 C:\rfts\_apps\jboss\standalone\data\hibernateSearchIndexes

## 4.5 Jericho

From Control panel menu, uninstall the Jericho application

Then install the new one.

# ONMSi 2.92 – Release Note

---

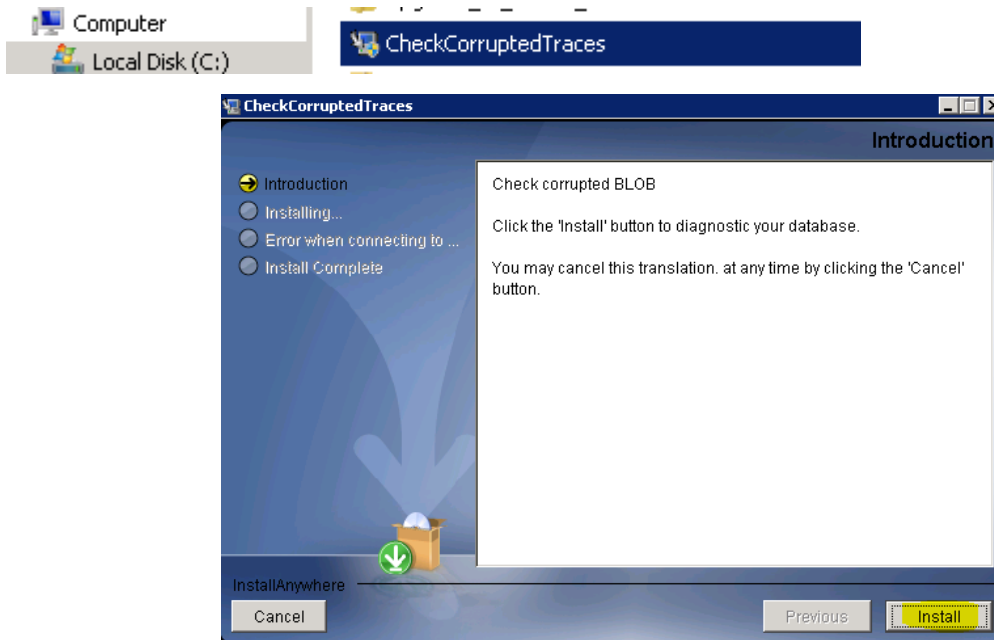
## 4.6 OTU

Install over the existing one using OTU tool kit.

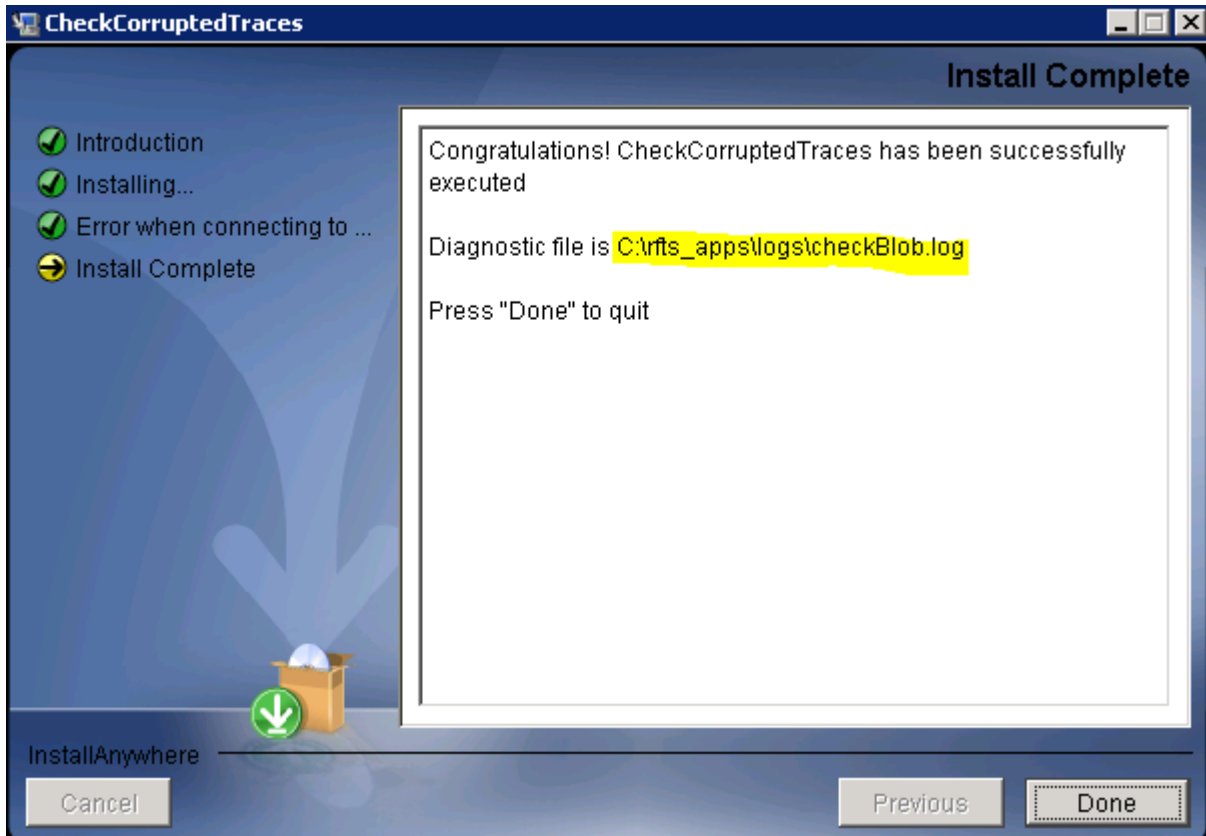
## 4.7 Database integrity check

- Execute the CheckCorruptedTraces.exe program on active server to identify the corrupted OTDR traces.

Execute the program CheckCorruptedTraces



## ONMSi 2.92 – Release Note



- Repair the identified corrupted OTDR traces.

Open the file C:\RFTS\_APPS\LOGS\CheckBlob.txt

For the links with repair instruction, copy, paste the url, then redo the reference according to the detail provided below.

```
## Corrupted OTDR Acquisition ID = 522396
## Acquired on: 07-DEC-12 03.57.25.000000 AM
##
Used in monitoring test ID = 522354
Monitoring test name = test1
Link ID = 521227
Link name = BD CT JT01-01-023
ONMSi URL = "http://localhost/app.jsp#LINK_DASHBOARD!id'521227'new'false"
OTDR trace used as REFERENCE of DETECTION of this test
-- REPAIR instructions --
-- Redo the DETECTION acquisition for this test
-- with acquisition parameters:
--   duration (s): 5
--   Pulse (ns): 1000
--   Resolution (cm): 1000
--   wavelength (nm): 1650
--   Range (km): 20.463
```