

VIAVI

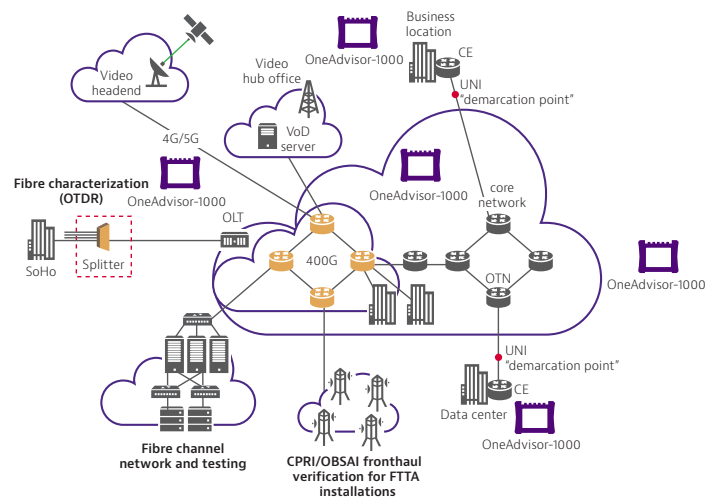
OneAdvisor-1000

High-Capacity Portable Network Tester

Member of the T-BERD/MTS Product Family

The OneAdvisor-1000 delivers all the test capabilities technicians and engineers need to install and maintain high-capacity networks up to 400G. Supporting emerging and legacy technologies, the OneAdvisor-1000 is ideal for metro/core, data center interconnect, and business services testing. OneAdvisor-1000 uses the exact same User Interface as all T-BERD/MTS products.

The industry's most comprehensive tool for up to 400Gbps testing provides full rate and protocol coverage to address service activation, troubleshooting, and maintenance. This portable tester provides the latest technology with interfaces such as QSFP-DD and SFP-DD. The OneAdvisor-1000 provides rate integration spanning 400GE down to T1/E1 in addition to fiber optic testing using OTDRs. The supported combinations provide investment protection by covering future technology and all legacy protocols. With advanced tests like Optics Self-Test for QSFPx and SFPx pluggables, high-speed cable testing for data centers, RFC 2544/Y.1564, and OTN Check, technicians can test their networks faster and more accurately than ever before.



Benefits

- Simplifies multi-technology testing via modularity to provide an all-in-one solution
- Optimized for central office use with a 10-inch multi-touch screen, scripted workflows, and clear pass/fail results
- PAM4 native support provided via connectors and interfaces also to test 400GE
- Complete support of protocols including Ethernet, OTN, SONET/SDH, PDH, Fibre Channel, CPRI, and eCPRI
- Compatible with fiber optics test modules such as OTDRs

Features

- Tests new technology including PAM4 and KP4 FEC at 400GE
- Strong battery life (beyond 1.5 hours) running 400GE with QSFP-DD optics including ZR
- Scripted workflows that drive test consistency across users; QuickCheck, RFC 2544, OTN Check, and Optics Self-Test.
- Pairs with the VIAVI 4100-Series OTDR and WDM Channel Checker modules with Smart Link Mapper
- Scalable and modular
- Comprehensive rate testing from 400GE down to DSx PDH (1.5M/2M) including all intermediate Ethernet rates

Comprehensive Tool

The OneAdvisor-1000 provides modularity with the following attributes:

- Modular base unit with large 10-inch, multi-touch display
- Integrated WiFi, and Bluetooth to wirelessly transfer results. For secure environments, units are available without WiFi/BT
- Built-in GNSS/GPS
- SmartAccess Anywhere provides easy device access from an Android device, IOS or PC
- Cloud-base StrataSync™ for results collection, data management, and device tracking



Modularity and support of VIAVI Fiber Test Tools

Metro/longhaul, business services, and data center technicians can test virtually any interface in a network as well as qualifying fiber plants with one portable instrument. The OneAdvisor-1000 accepts the following modules:

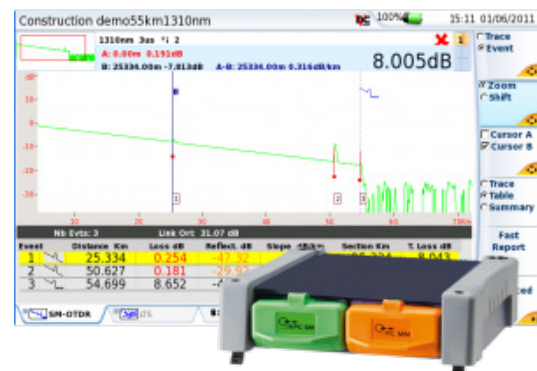
- 400G module with PAM4 400GE and 100GE no FEC or KR4 FEC support and hardware readiness for 200GE, NG 100GE, 50GE, and FlexE. HW-ready for upcoming technologies such as 400GE ZR interfaces and SFP-DD optics.



- 100G module with support of independent dual tests for any protocol from T1/E1 to OTU4 including intermediate rates like 10GE and 25GE. Support of Ethernet, FlexE, OTN, Fibre Channel, CPRI, SONET/SDH, PDH



- Full family of OTDR modules, with Smart Link Mapper which provides an icon-based map view for clear diagnostics of detected issues. Also supports Channel Checkers which display a wavelength spectrum.



Ease of Use

- Fixed test interfaces eliminate loose, pluggable modules
- LEDs indicate plug-ins for tests
- Streamlined user interface provides simple pass/fail, green/red results
- Battery support at all rates
- Expandable via interchangeable test modules

Troubleshooting with Optics Self-Test

Optics Self-Test is a workflow tool to identify and troubleshoot performance issues related to pluggable optics. It is especially well-suited to field environments where pluggable optics issues are difficult to isolate.

Time-Saving Ethernet Service Activation

Test more quickly and efficiently using automated tests:

- QuickCheck — a fast, automated test that validates end-to-end configurations; runs as a pre-check test before RFC 2544 or Y.1564 or as a stand-alone test.
- Enhanced RFC 2544 — an automated turn-up test with built-in time efficiency for validating key performance indicators (KPIs), concurrently measuring throughput, frame delay, and frame delay variation in addition to frame loss and committed burst size (CBS).
- Y.1564 SAMComplete™ — An automated service verification test that speeds the verification of multiple classes of service (COS) or connections based on SLAs.

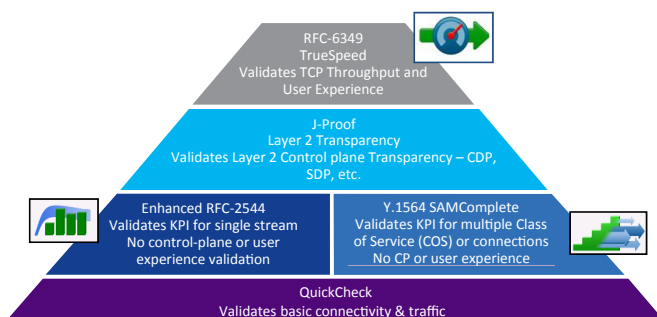
400GE Testing

The 400G Module enables the tests specific to 400GE, including:

- KP4 FEC testing for correctable errors up to 15 symbols and uncorrectable errors. Monitoring of high BER rates with alarm threshold.
- Key Performance Indicator testing using ATPv3 which provides frame loss, out-of-sequence, and latency measurements.
- Bit Error Rate testing using a choice of different PRBS patterns in Ethernet frames. Multi-lane unframed BERT option available.
- Selection of various payload sizes up to 10,000 bytes including random distribution and EMIX.
- Full line rate bandwidth including Ethernet burst testing. Support of layer 2 and layer 3 IPv4 testing including ARP and DHCP.
- Optics Self-Test for QSFP-DD devices. Includes pre-FEC and post-FEC BER results with pass/fail results based on BER theory, PPM offset testing, and temperature monitoring.
- Control of QSFP-DD devices and registers via expert mode. This includes pre-emphasis and per register access.
- Ethernet level testing including QuickCheck, RFC 2544, and Y.1564 SAMComplete™.
- Full QSFP-DD register programming and setting of pre-emphasis in expert mode.
- Reporting of full QSFP-DD power consumption and reporting of CMIS 4.0 host-media applications.

OTN Service Activation with OTN Check

The unique VIAVI OTN Check tool greatly simplifies the testing OTN services. This workflow tool automates the process of turning up a new OTN service by integrating key tests like OTN payload verification, round-trip delay, overhead transparency testing and encryption testing. OTN Check streamlines the test process and generates pass/fail results.



Part of the Leading T-BERD/MTS Test Portfolio



StrataSync — Empower Your Assets

StrataSync is a hosted, cloud-enabled solution for managing assets, configurations, and test data on VIAVI instruments. It ensures that all instrument software is current, improving instrument efficiency and technician effectiveness as a consequence. StrataSync enables inventory management, test result consolidation, and performance data distribution with browser-based ease. StrataSync manages and tracks test instruments, collects and analyzes results from the entire network, and helps train and inform the workforce.

VIAVI Care Support Plans

Increase your productivity for up to 5 years with optional VIAVI Care Support Plans:

- Maximize your time with on-demand training, priority technical application support and rapid service.
- Maintain your equipment for peak performance at a low, predictable cost.

Contact your local representative for more information on VIAVI Care Support Plan options or visit:

viavisolutions.com/viavicareplan

Features

*5-year plans only

Plan	Objective	Technical Assistance	Factory Repair	Priority Service	Self-paced Training	5 Year Battery and Bag Coverage	Factory Calibration	Accessory Coverage	Express Loaner
 BronzeCare	Technician Efficiency	Premium	✓	✓	✓				
 SilverCare	Maintenance & Measurement Accuracy	Premium	✓	✓	✓	✓*	✓		
 MaxCare	High Availability	Premium	✓	✓	✓	✓*	✓	✓	✓



Contact Us **+1 844 GO VIAVI**
(+1 844 468 4284)

To reach the VIAVI office nearest you,
visit viavisolutions.com/contact

© 2020 VIAVI Solutions, Inc.
Product specifications and descriptions in this document are subject to change without notice.
ona1000-br-tfs-nse-ae
30190883 902 1020