

QUICK CARD

Updating Software via Ethernet

This quick card outlines how to upgrade the OneAdvisor 800 to the latest software revision using a wired Ethernet LAN connection to the internet.

EQUIPMENT REQUIREMENTS




Equipment Requirements:

- OneAdvisor 800
- Wired Internet Connection
- CAT5E or better cable



Figure 1: Equipment Requirements

CONNECT TO INTERNET

1. Plug the OneAdvisor test set into AC power. You cannot update the software while running on battery.
2. Using CAT5E or better cabling, connect the OneAdvisor 800 Ethernet Management Port under the flap on the top of the unit to an Ethernet LAN port providing internet access.
3. Tap  to display the Home Screen.
4. Tap  to display the **System** menu.
5. Tap the **Network** icon .
6. Tap the **LAN** icon on the left screen side. If using DHCP, set **IP Mode** to **DHCP** and wait until unit obtains an IP address; otherwise set **IP Mode** to **Static** and configure a static IP address, Subnet Mask, and Gateway.

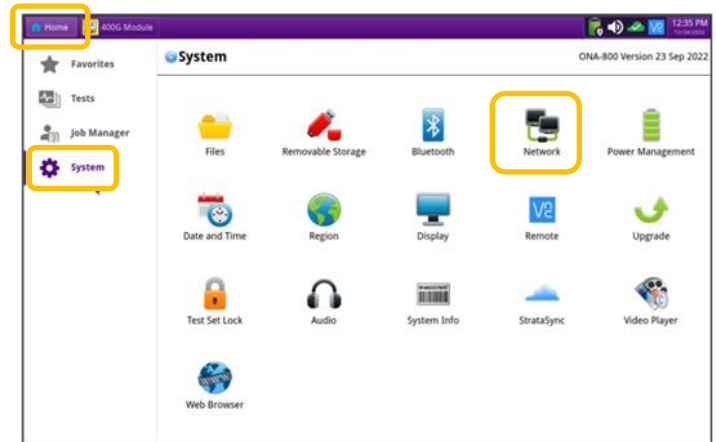


Figure 2: System Menu

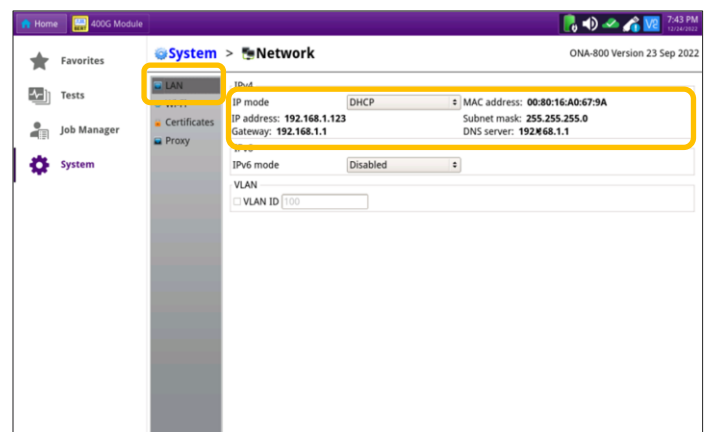





Figure 3: Network Menu

QUICK CARD

UPGRADE TEST SET

1. Tap  to display the Home Screen.
2. Tap  to display the **System** menu.
3. Tap the **Upgrade** icon  to show the Upgrade menu.

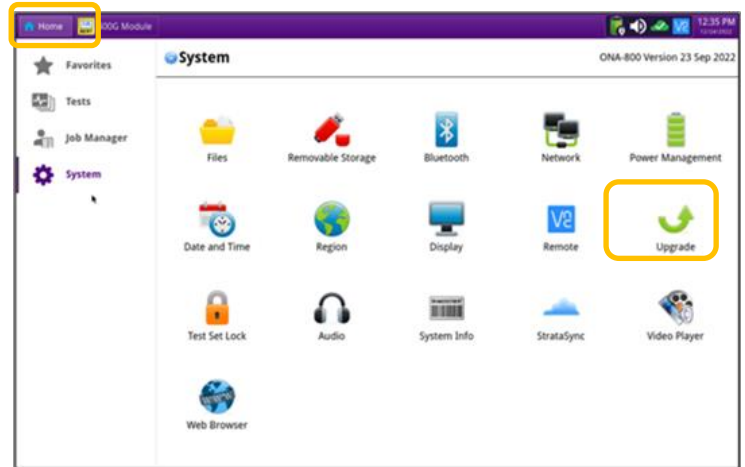
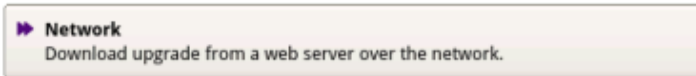



Figure 4: System Menu

4. Select **Network** for the upgrade method.



5. Tap  to query the server for available upgrades.

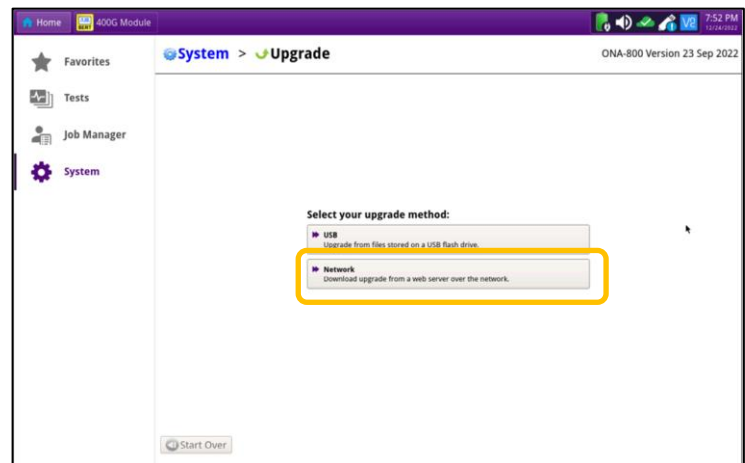
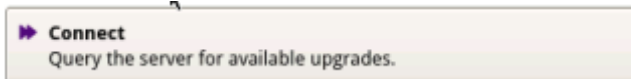
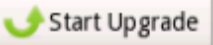


Figure 5: Upgrade Menu

6. Tap  and follow screen prompts to complete the software upgrade.
7. The unit will reboot to complete the upgrade.

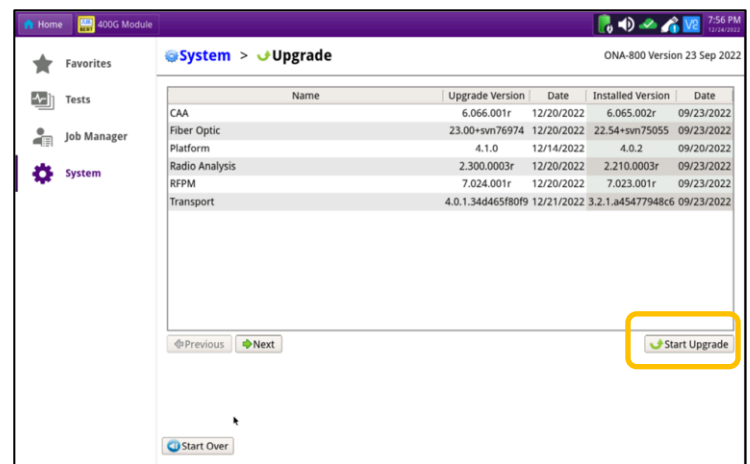


Figure 6: Upgrade Menu