

QUICK CARD

Updating Software via WiFi

This quick card outlines how to upgrade the Optimeter to the latest software revision using a WiFi connection to the internet.

EQUIPMENT REQUIREMENTS

Equipment Requirements:

- Optimeter
- WiFi Internet Connection



Figure 1: Equipment Requirements

CONNECT TO WIFI

1. Press the **ON/OFF** button to turn on the test set.



2. Press the **HOME** button to display the home screen.



3. Tap the **Connectivity** icon to show the Connectivity menu.



4. Tap the **Wireless** icon to configure the WiFi connection:



- Set **Wlan Mode** to **Wireless Client**.
- Set **SSID** to the SSID of your network or Personal Hotspot and enter your **Key/Password**.
- Verify that an **IP Address** is dynamically assigned to the Optimeter.

5. Tap the **Exit** soft key to return to the Connectivity menu.



Figure 2: Optimeter Home Screen

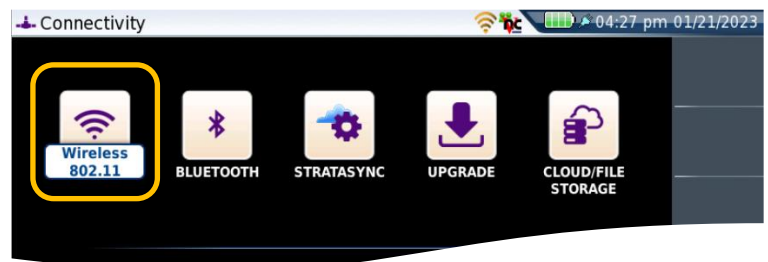


Figure 3: Connectivity Settings

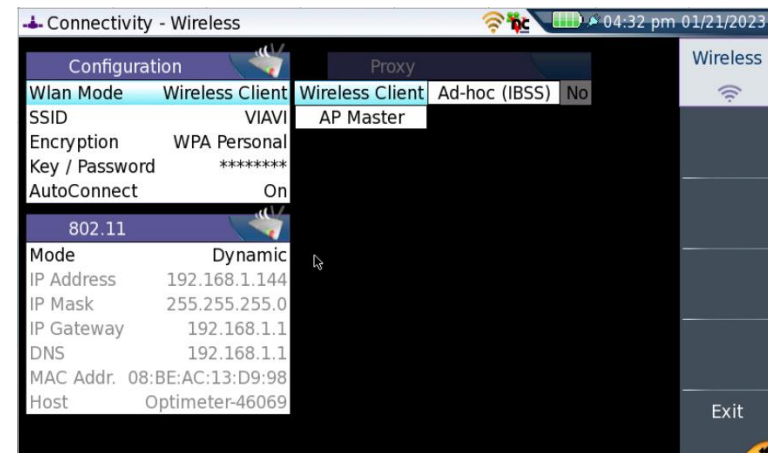



Figure 4: Wireless Settings

QUICK CARD

UPGRADE

1. Plug the Optimeter into AC power. You cannot update the software while running on battery.

2. Tap the **UPGRADE** Icon  to show the Software Upgrade screen.

3. Verify **Address Type = Viavi Server**.

4. Tap the **Software Upgrade** soft key. 

5. Tap the **Check available version** soft key. 

6. A window will appear to verify that the server address is correct. Tap **Continue**.

7. Tap the **Start Upgrade** soft key. 

8. Follow screen prompts to complete the software upgrade.

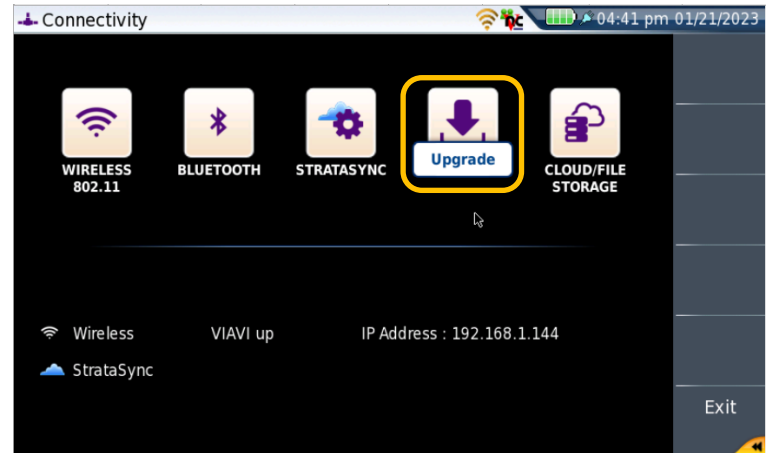


Figure 5: Connectivity Menu

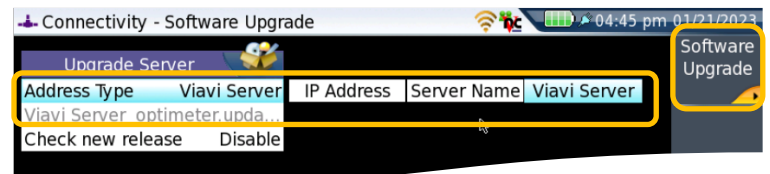


Figure 6: Software Upgrade Menu

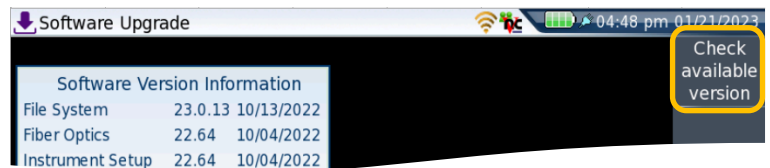


Figure 7: Software Upgrade Menu

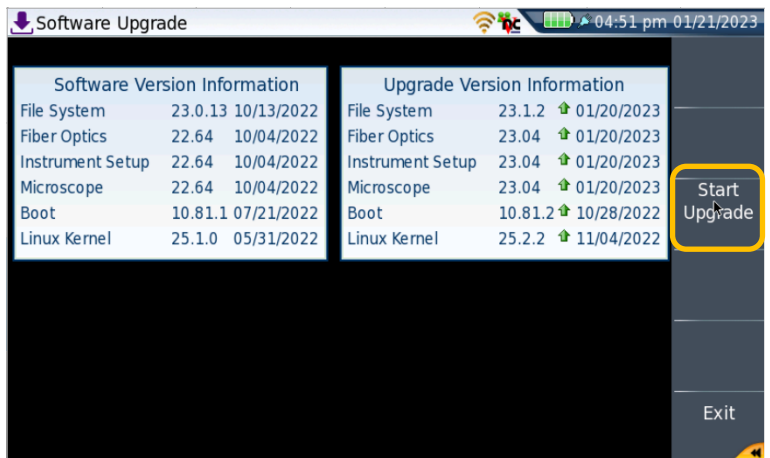


Figure 8: Start Upgrade