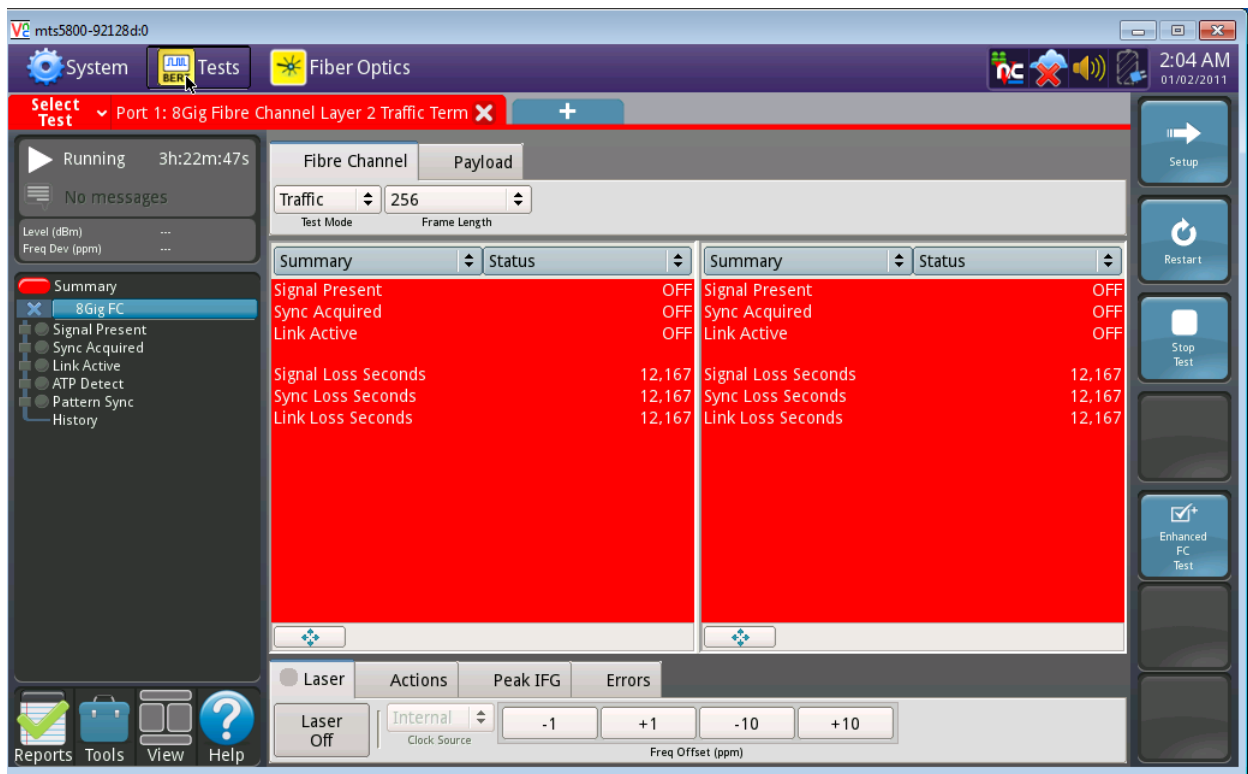


## Setting up the T-BERD®/MTS-5800 V2 Platform

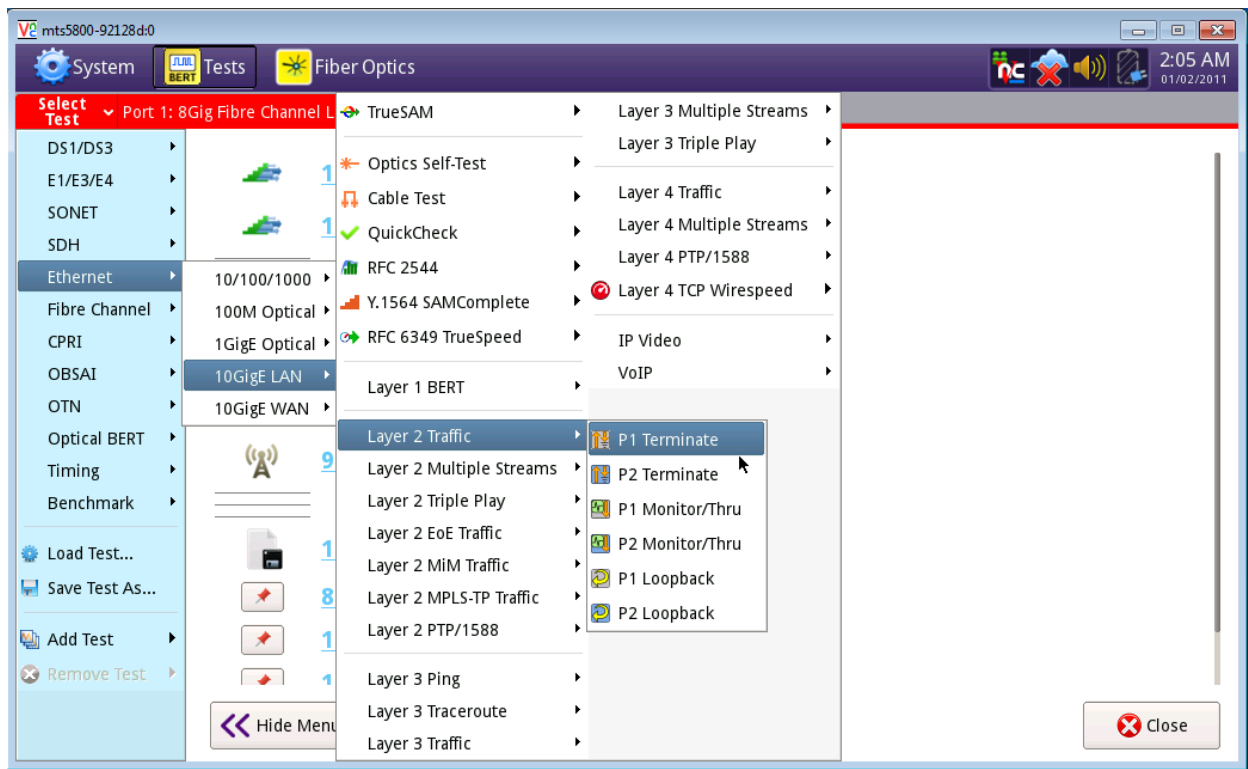
### For a 10GigE LAN Layer II Ethernet Test



#### 1. Select Test

## Setting up the T-BERD®/MTS-5800 V2 Platform

### For a 10GigE LAN Layer II Ethernet Test

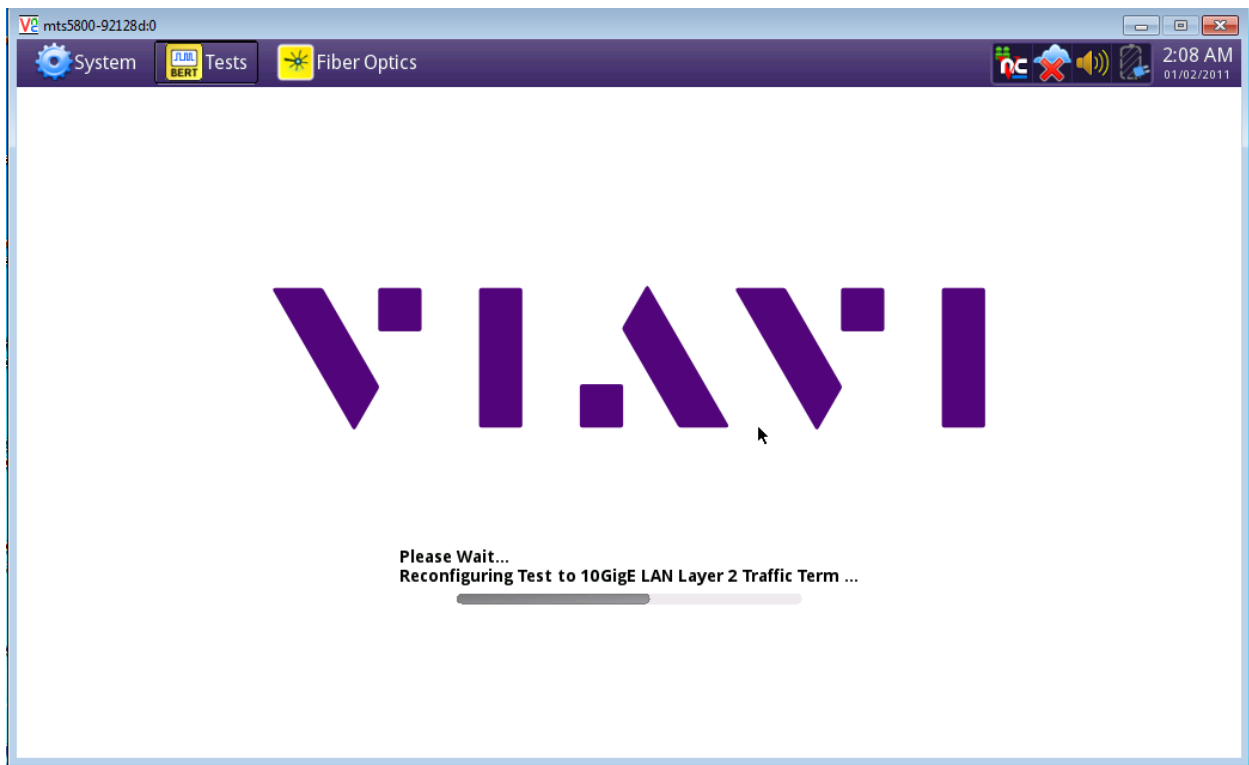


#### 2. Select Ethernet 10GigE LAN Layer II Traffic P1 Terminate



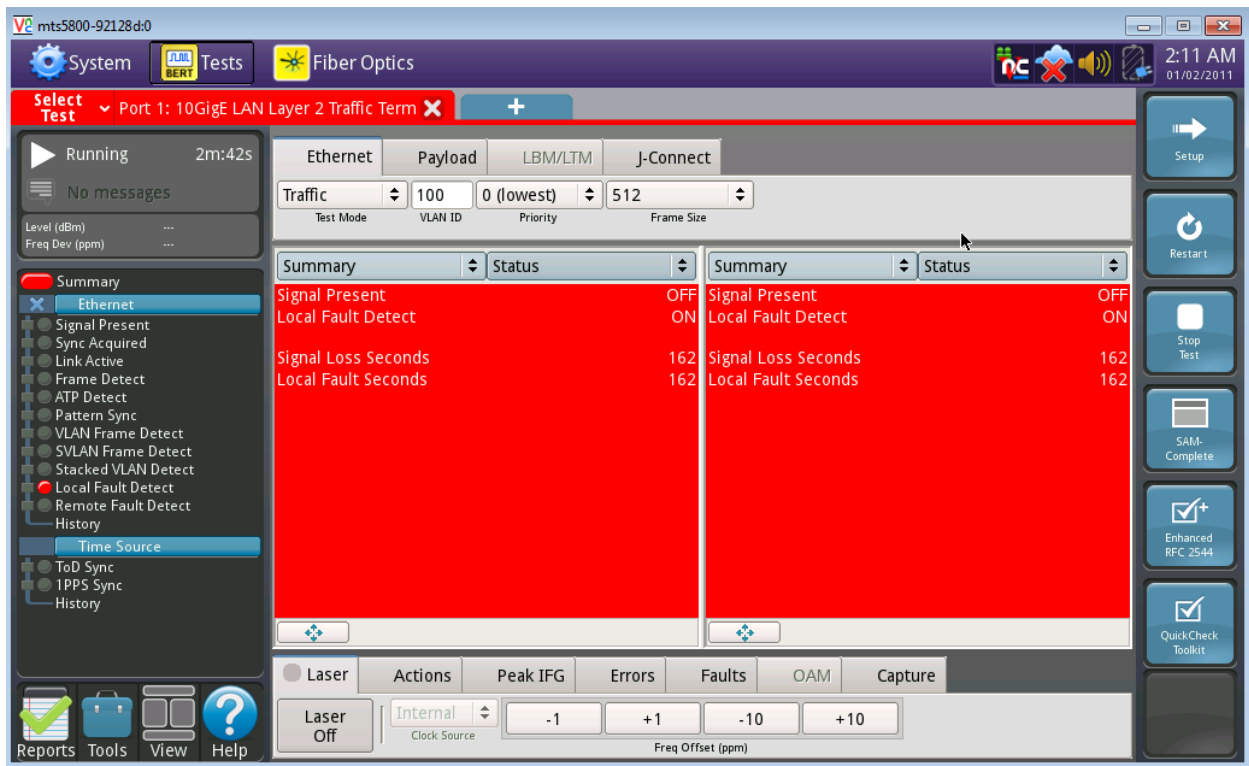
3/7/2018

## Setting up the T-BERD®/MTS-5800 V2 Platform For a 10GigE LAN Layer II Ethernet Test



3. The Test will launch

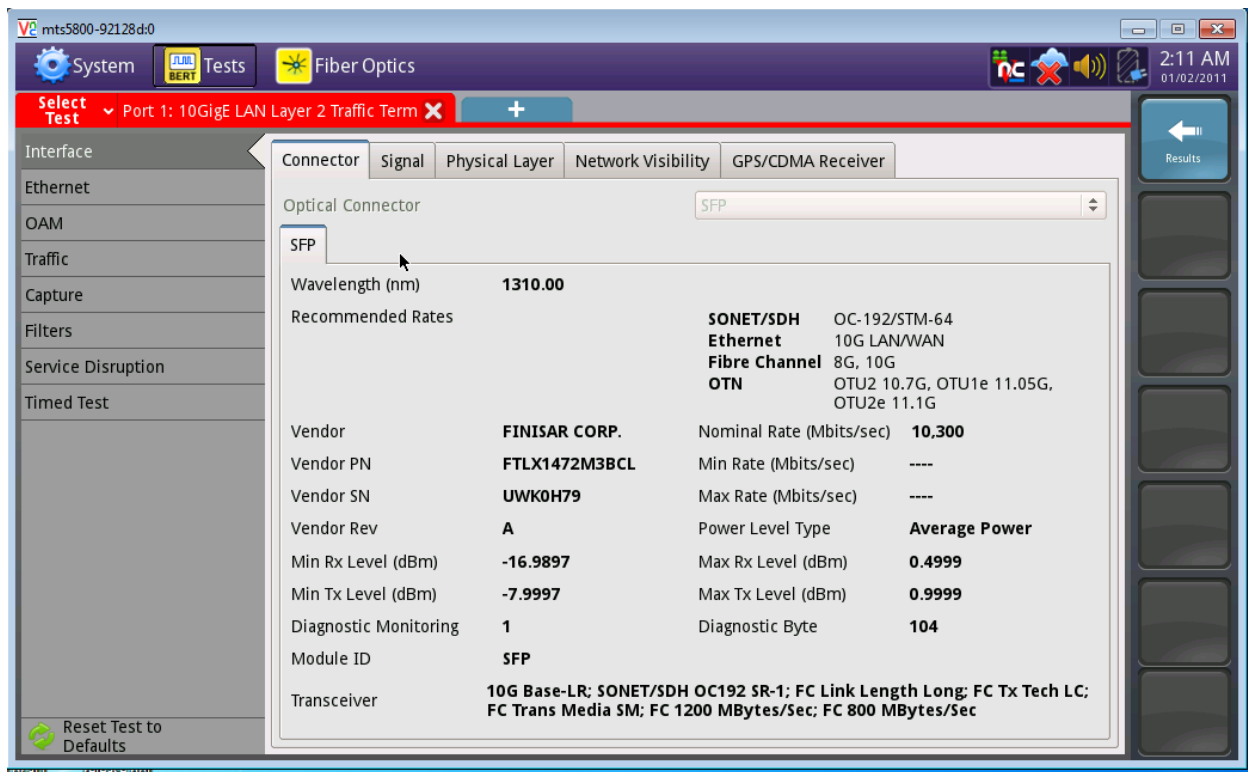
## Setting up the T-BERD®/MTS-5800 V2 Platform For a 10GigE LAN Layer II Ethernet Test



**4. From the Summary Results window select Setup**

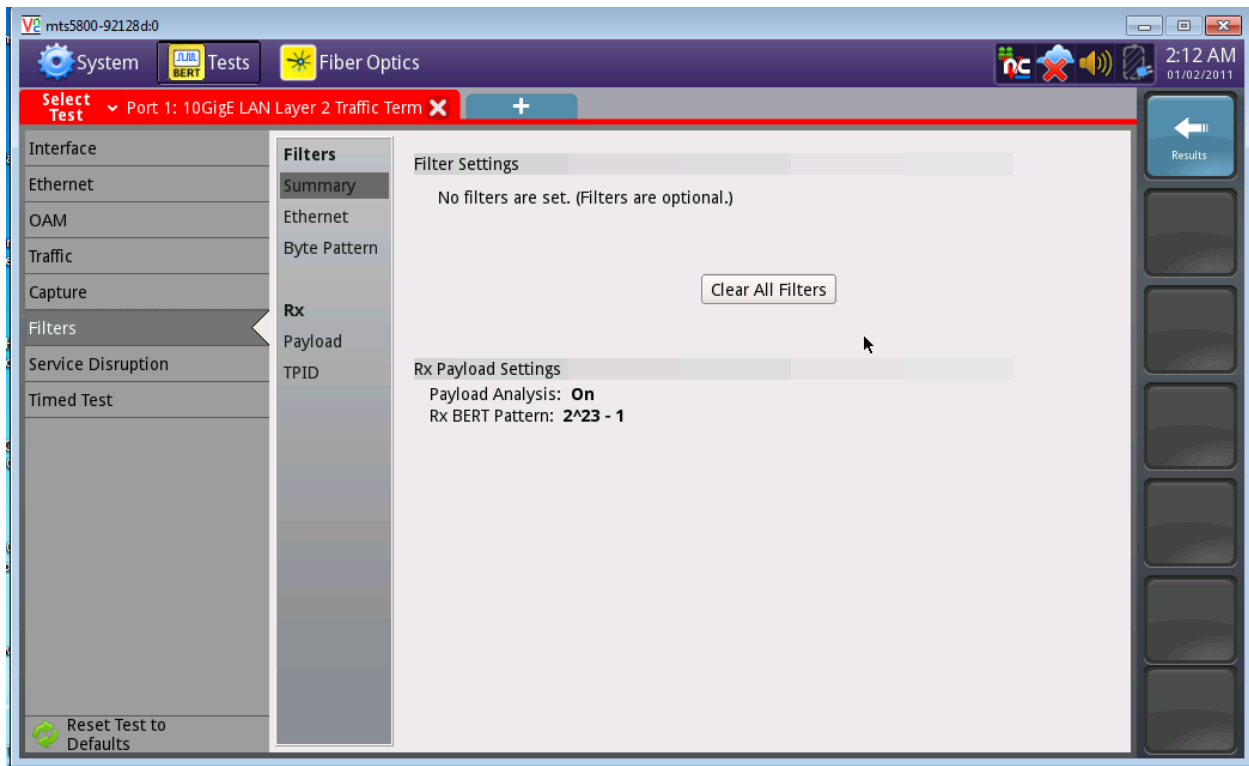
## Setting up the T-BERD®/MTS-5800 V2 Platform

### For a 10GigE LAN Layer II Ethernet Test



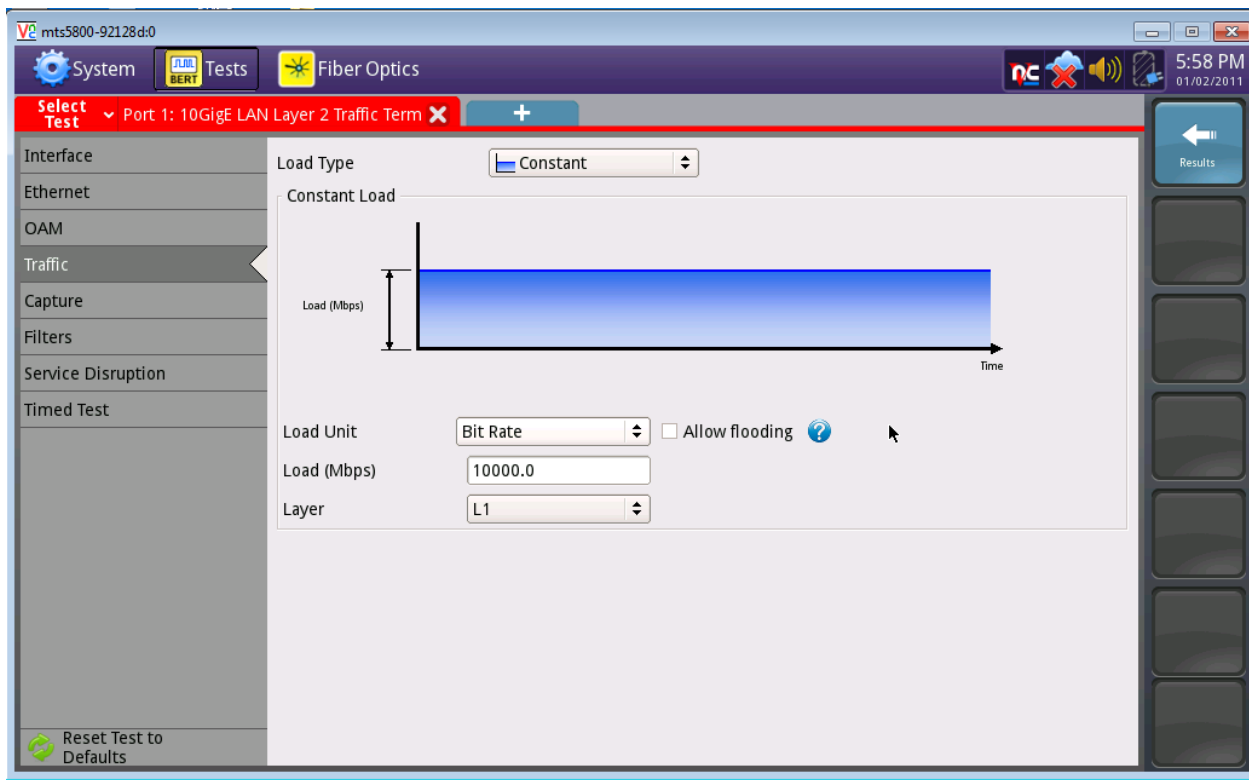
5. Select Interface and Connector verify that your SFP is a 1310 for Single mode

## Setting up the T-BERD®/MTS-5800 V2 Platform For a 10GigE LAN Layer II Ethernet Test



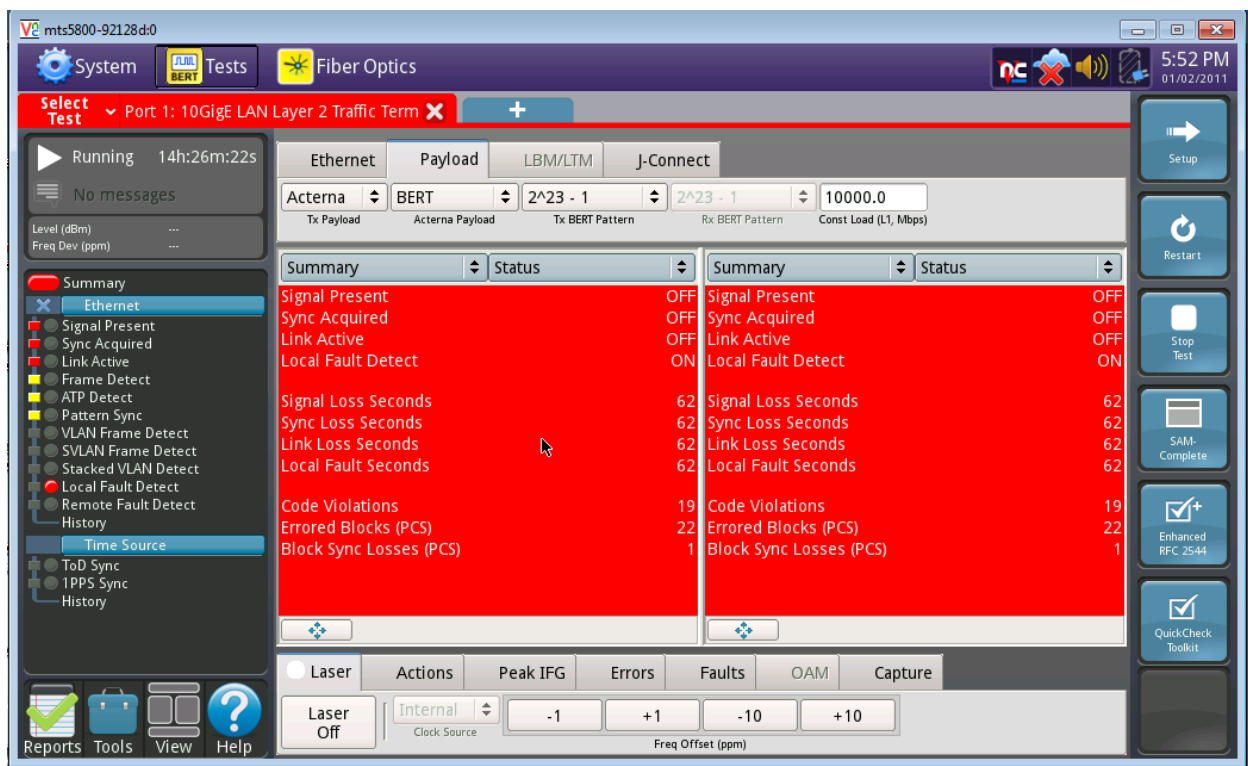
6. Select the Filters tab and Summary and Clear All Filters and then select Results

## Setting up the T-BERD®/MTS-5800 V2 Platform For a 10GigE LAN Layer II Ethernet Test



7. Select Traffic verify that your Load Type is Constant and that your Load Unit is Bit Rate Load (Mbps) 10000.0 Layer 1 Select Results

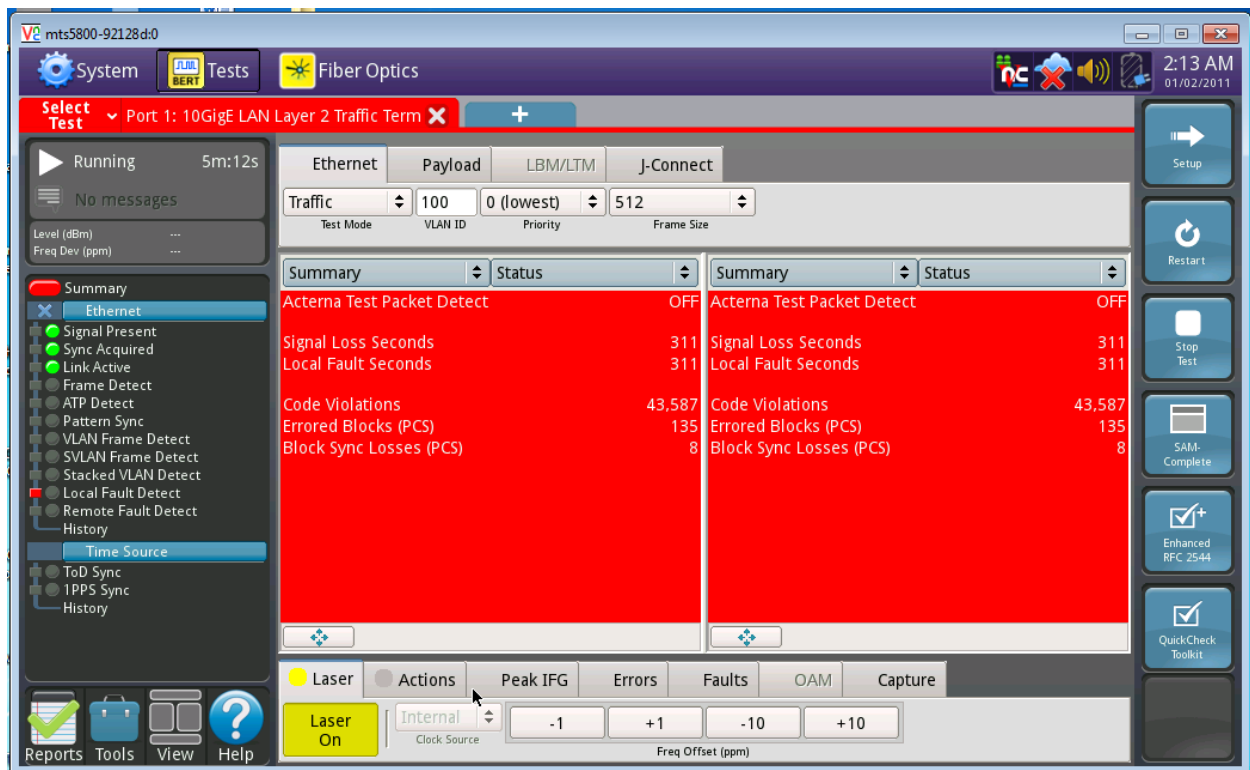
## Setting up the T-BERD®/MTS-5800 V2 Platform For a 10GigE LAN Layer II Ethernet Test



**8. Select Payload and verify that you have Acterna Below Ethernet and Payload has Bert 2^23-1 selected and that your Constant Load is 10000 Mbs**

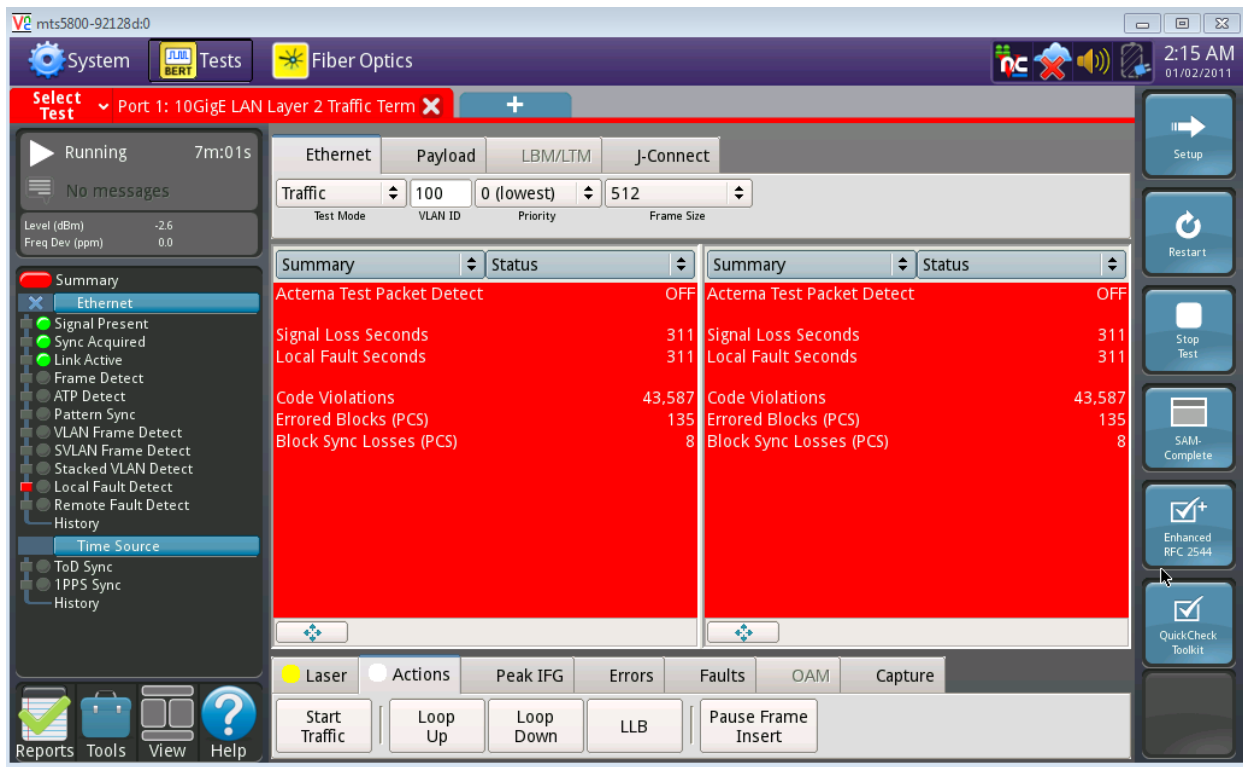


## Setting up the T-BERD®/MTS-5800 V2 Platform For a 10GigE LAN Layer II Ethernet Test



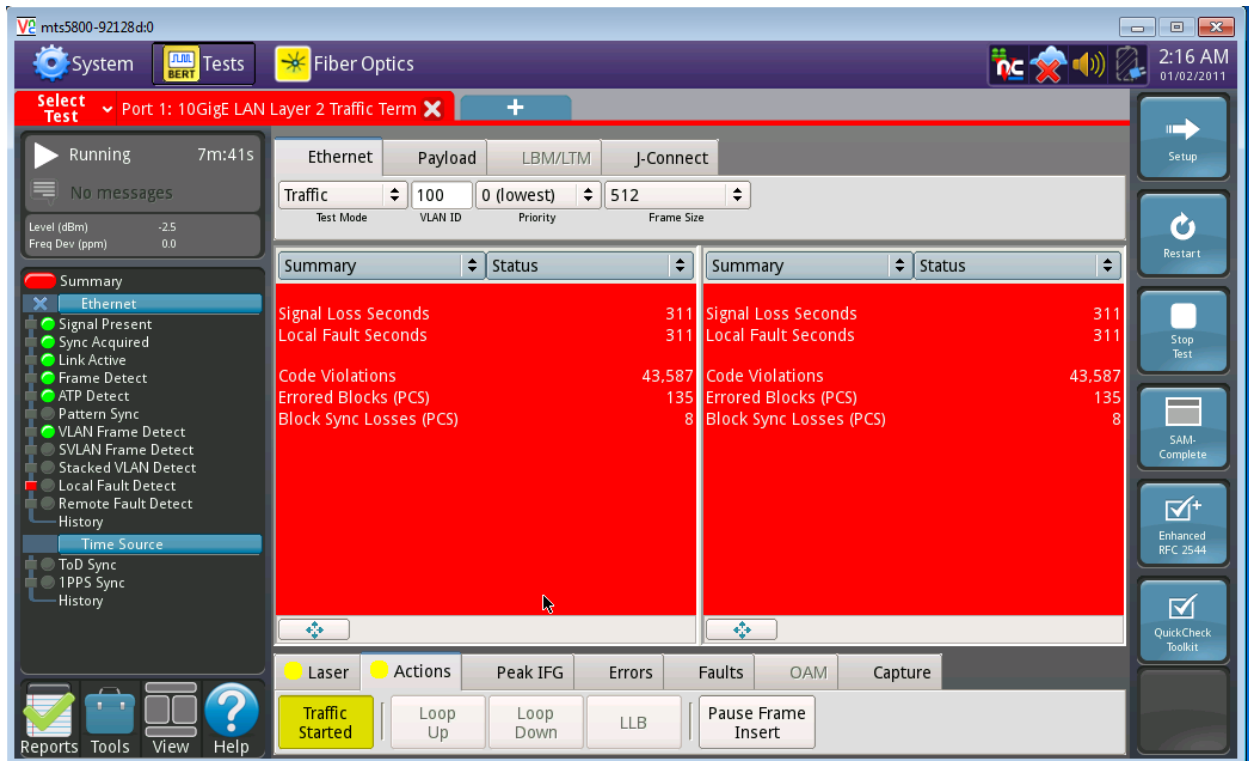
**9. From the Summary Results window select Actions and turn on your Laser. Verify you have Signal Present Sync Acquired and Link is Active (If you receive a Local Fault Detect place a 5 or 10 Db Attenuator on the RX of side of your TB-5800)**

## Setting up the T-BERD®/MTS-5800 V2 Platform For a 10GigE LAN Layer II Ethernet Test



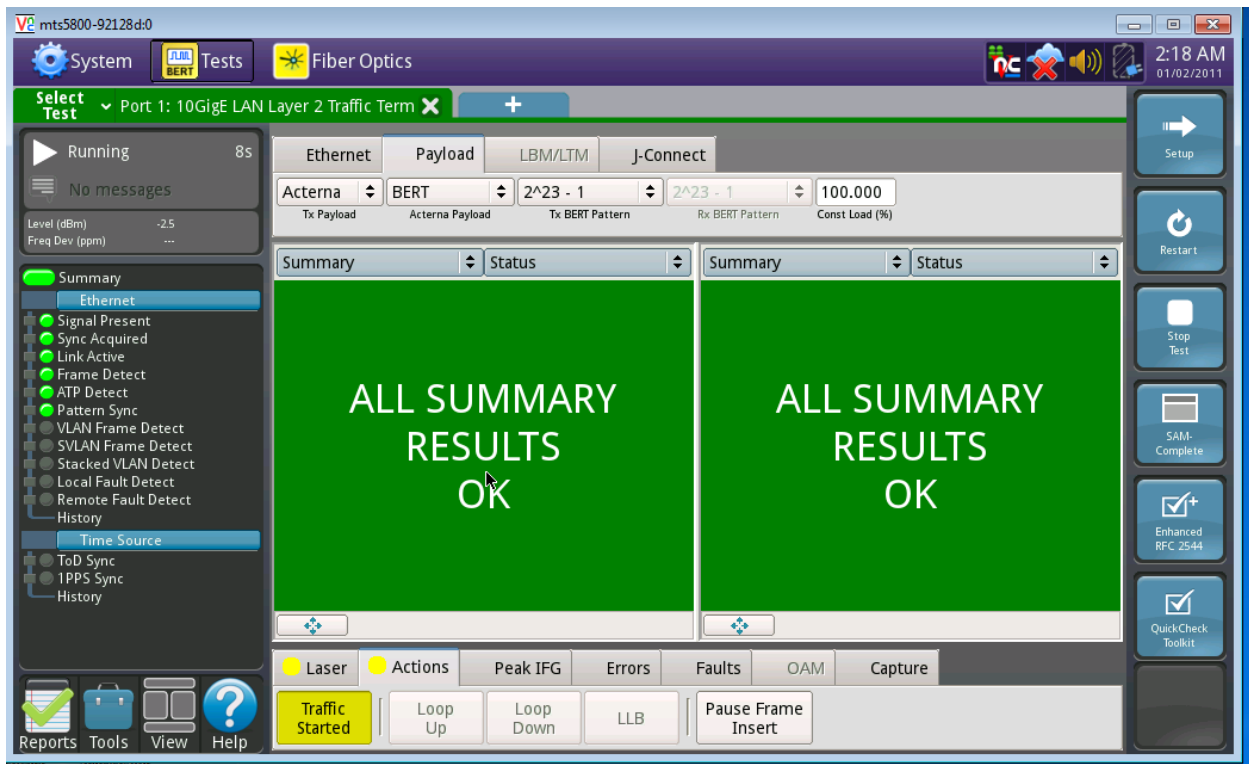
### 10. Select Actions and Select Start Traffic

## Setting up the T-BERD®/MTS-5800 V2 Platform For a 10GigE LAN Layer II Ethernet Test



**11. Traffic Started is yellow and Select Restart**

## Setting up the T-BERD®/MTS-5800 V2 Platform For a 10GigE LAN Layer II Ethernet Test



**12. Verify that you have Signal Present, Sync Acquired, Link active, Frame Detect, ATP Detect and Pattern Sync**