

Brochure

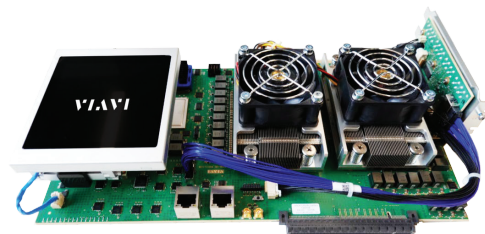
**VIAVI**

# Integrated Protocol Analysis Platforms

Compute, Storage and Transport Line Overview



Scan to  
learn more



PCIe®/CXL®/NVMe® Analyzers/Exercisers/Jammers

## Powerful and Versatile PCIe® Testing Solutions

With each generation of PCIe®, speed and bandwidth have doubled, making the testing process more difficult as data capture, storage and visualization processes grow in complexity. PCIe 6.0 presents increased physical challenges with PAM-4 signaling, FLIT mode and protocol complications that need to be tested and validated. VIAVI specializes in configuration and protocol testing/analysis and has introduced some of the most advanced and functional platforms in the industry. Our components are backward-compatible, flexible, cost effective, easy to operate, and accelerate set-up time, testing time and promote speed to market.

Chassis	PCIe4	PCIe5	PCIe6	Lanes
4K4 Analyzer	■			4
4K16 Analyzer/Jammer	■			16
5P8/5P16 - Analyzer/Exerciser/Jammer		■		8/16
5P16 Analyzer + PCIe6 Interposer			■	4
6P4-E - Exerciser			■	4
6P16-AE - Analyzer/Exerciser			■	16
Interposers	PCIe4	PCIe5	PCIe6	Lanes
Exerciser Host Test Stand		■	CEM - planned EDSFF - planned	16
Exerciser Endpoint Test Card			CEM - planned EDSFF - planned	
CEM	■	■	■ Analyzer Function	4/8/16
CEM U.2	■			4
E1 EDSFF	■	■		8
E3 EDSFF		■		16
U.2	■	■		4
U.3	■	■		4
M.2	■	■		4
Oculink/Slimline	■			4
Slimline		■		8
SFF-8674	■			4
Flying Lead	■	■		4
OCP3		■		16
CDFP (CopprLink™ - external)		■		16
MCIO (CopprLink™ - internal)		■		16

## New PCIe 6.0 Analysis Platform

The new VIAVI PCIe 6.0 analysis platform will include Analyzers, Exercisers, and Interposers along with an option that enables 64 GT/s PCIe 6.0 trace capture on existing Xgig PCIe 5.0 equipment to extend equipment investments through the early PCIe 6.0 development phase.

## Multiple Functions on a Single Platform for Equipment Optimization and Reduced TCO

Our PCI Express® Xgig® PCIe5 platform supports legacy data rates – as well as single or multiple Analyzer, Exerciser and Jammer functions on the same chassis. This approach provides users with the ability to optimize equipment to best meet operational and budgetary requirements.

## Port Bifurcation and Simultaneous Multi-User Capability

We have also added Analyzer bifurcation capabilities that enable multiple users and simultaneous tests on same platform for additional operational and cost efficiencies.

## Troubleshooting Complex LTSSM Transactions

Increased data rates at PCIe 5.0 and PCIe 6.0 present interoperability challenges when bringing up links. Xgig PCIe Analyzer/Exerciser platforms support advanced LTSSM Override capabilities that provide designers with insight and techniques to troubleshoot these complex transactions with repeatability.

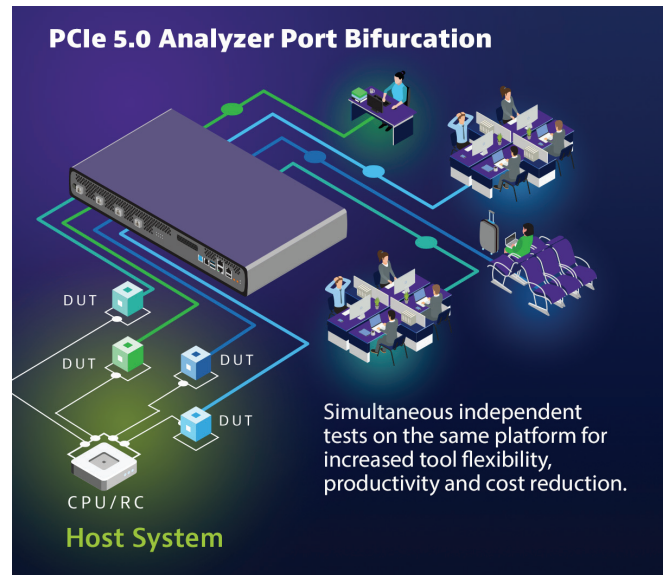
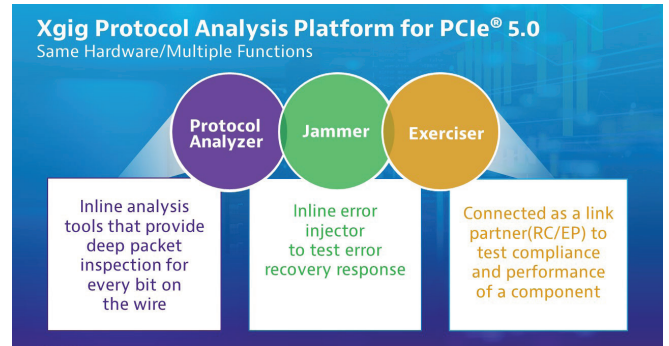
## Robust Software Tools Suite for all Xgig Platforms



**Xgig Expert™**  
User-friendly interface that aids in rapid data interpretation, performance analysis and troubleshooting.

**Xgig Serialytics™**  
Builds on Xgig Expert to expose hidden behaviors and events in a trace. Enhances contextual debugging and provides smart analytics for serial protocols.

**MLTT**  
Medusa Labs Test Tools suite is an application-based data and signal integrity testing tool enabling developers to identify, locate and resolve errors through stress testing.



**Strong support and participation in standards organizations**

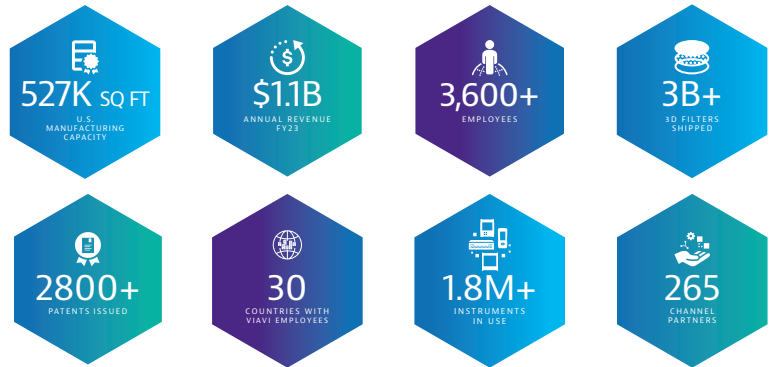


CXL and NVMe work with PCIe to enhance overall system efficiency. Xgig tools are accepted for PCI-SIG® and CXL Consortium™ compliance testing.

# A century of leadership for complex test, measurement and instrumentation solutions

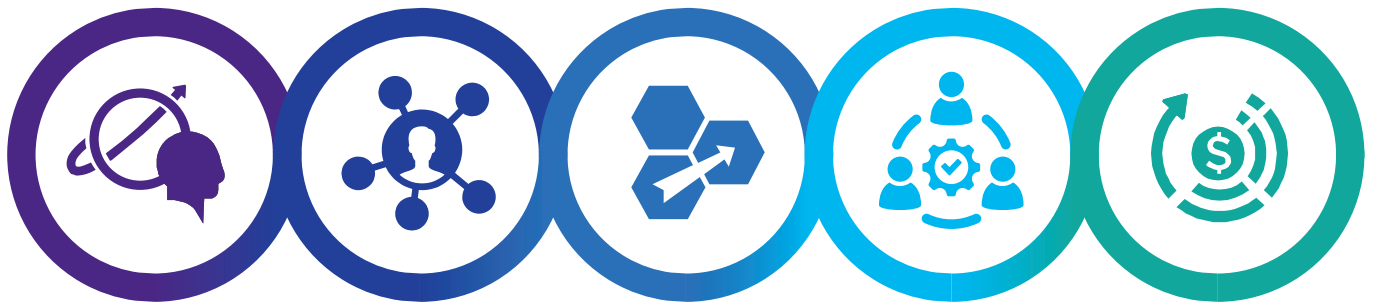
VIAMI is a global provider of network test, monitoring and assurance solutions for communications service providers, enterprises, network equipment manufacturers, government and avionics. With a heritage that dates back a century, we have grown organically and through acquisition to become a highly-resourced company, intensely focused on helping our customers harness the power of instruments, automation, intelligence and virtualization.

## VIAVI Solutions by the Numbers



1215-1900.0823

## Why VIAVI for Integrated Protocol Analysis Solutions?



### Resources and Stability

Fully-resourced, publicly-traded company with a strong global presence and a blue-chip customer base

### Proven Performance

Customer-focused innovation and vision with industry-leading user interfaces, performance and accuracy

### Time-to-Market

Functional versatility and streamlined testing processes so customers can optimize equipment usage and bring products to market faster

### Responsive Support

Personal service, support and training from technical experts to minimize call-backs and escalations

### Overall Value

The perfect combination of product performance, support – and cost of ownership metrics

PCI-SIG, PCIE® and the PCI HOT PLUG® design mark are registered trademarks and/or service marks of PCI-SIG.  
 CXL is an exclusively-owned trademark of the CXL Consortium.  
 NVMe is a registered trademark of NVM Express.



Contact Us **+1 844 GO VIAVI**  
 (+1 844 468 4284)

To reach the VIAVI office nearest you,  
 visit [viavisolutions.com/contact](https://viavisolutions.com/contact)

© 2024 VIAVI Solutions Inc.  
 Product specifications and descriptions in this document are subject to change without notice.  
 Patented as described at [viavisolutions.com/patents/protocolanalysis-br-snt-nse-ae-30193088-907-0924](https://viavisolutions.com/patents/protocolanalysis-br-snt-nse-ae-30193088-907-0924)