

Quick Card

OneAdvisor-800 Updating Software via Internet




This quick card outlines how to upgrade the OneAdvisor-800 to the latest software revision using a **wired** LAN connection with **internet access**. Please note that software **may not** be updated via Wireless LAN (Wi-Fi) or Mobile hotspots.

OneAdvisor units with software that is more than 2 major releases old, should not be updated via Internet. Please follow instructions on the **Updating Software via USB** quick card to set your unit up to the current software, two major revisions at a time.

Equipment Requirements:

- Wired Internet Connection
- CAT5E or better cable.

Connect to Internet:

1. Plug the OneAdvisor-800 test set into AC power. You cannot update the software while running on battery.
2. Using CAT5E or better cabling, connect the OneAdvisor-800 Ethernet Management Port on the top of the unit to a LAN port providing internet access.
3. Tap the **Home** icon  in the **Status Bar** at the top of the display and then the **System** icon  on the left side panel to show the **System menu**.
4. Tap the Network Icon  to show the **Network menu**.
5. Tap the **LAN** icon on the left screen side. If using DHCP, set **IP Mode** to **DHCP** and wait until unit obtains an IP address; otherwise set **IP Mode** to **Static** and configure a static IP address.

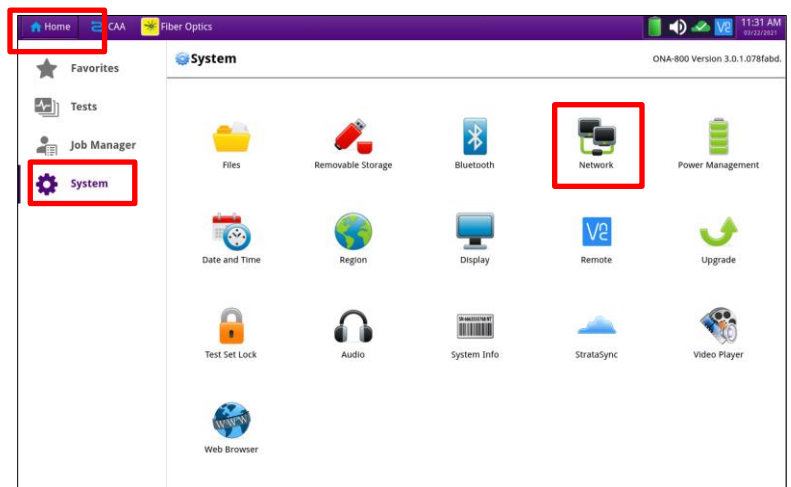


Figure 1: OneAdvisor-800 System Menu

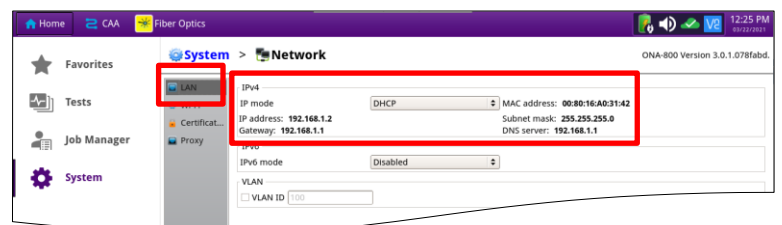




Figure 2: OneAdvisor-800 Network Menu

Upgrade the Test Set:

1. Tap the word **System** in blue  to return to the **System** menu.



2. Tap the Upgrade Icon  to show the Upgrade menu.

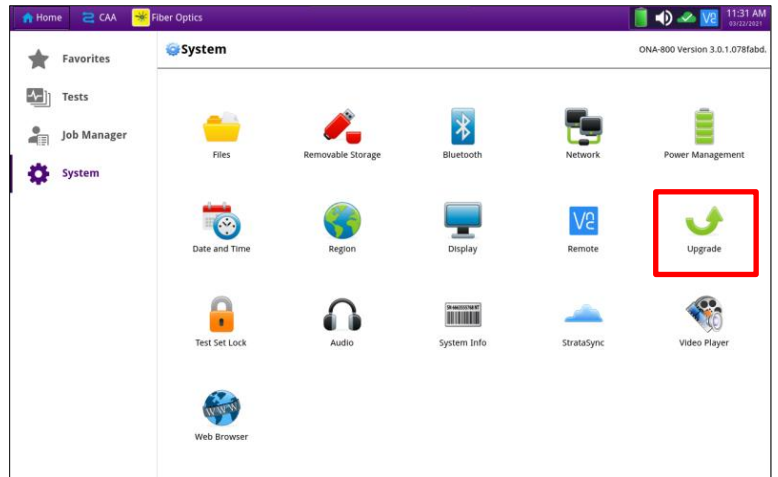



Figure 3: OneAdvisor-800 System Menu

3. Select “Network” for the upgrade method.

4. Tap  .

5. If there is newer version, tap  and follow screen prompts to complete the software upgrade.

6. The unit will reboot to complete the upgrade.

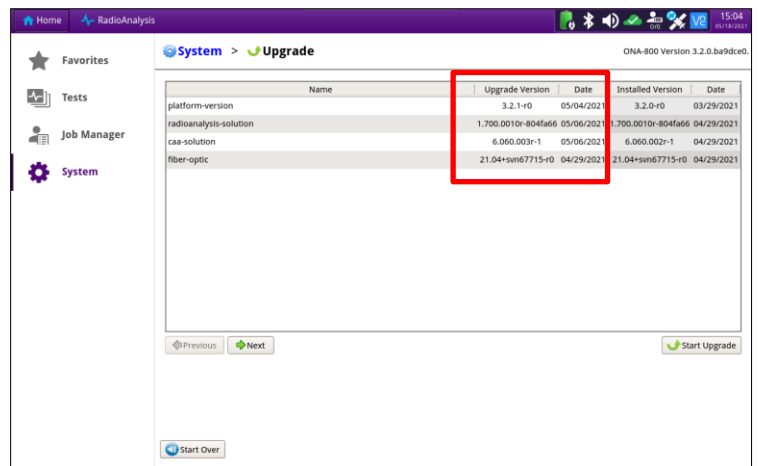


Figure 4: OneAdvisor-800 Upgrade Menu