



3900 Series
Digital Radio Test Set
ARIB Option Manual



3900 Series

Digital Radio Test Set

ARIB Option Manual

PUBLISHED BY
VIAVI Solutions, Inc.

COPYRIGHT © VIAVI Solutions, Inc. 2020

All rights reserved. No part of this publication may be reproduced, stored in a retrieval system, or transmitted in any form or by any means, electronic, mechanical, photocopying, recording or otherwise without the prior permission of the publisher.

Re-Issued Jan 2020

Preface

SCOPE

This manual contains operational descriptions of the features contained in the 3900 Series ARIB Test System Option. Refer to the 3900 Series Operation Manual for information regarding general Test Set operation.

NOMENCLATURE STATEMENT

The 3901, 3902, 3920 and 3920B Digital Radio Test Set is the official nomenclature for the test sets currently included in the 3900 Digital Radio Test Set Series. In this manual, 3900, unit or Test Set, refers to the 3901, 3902, 3920 and 3920B Digital Radio Test Sets unless otherwise indicated.

INTENDED AUDIENCE

This manual is intended for personnel familiar with the use of the 3900. Refer to the 3900 Series Operation Manual for information pertaining to Test Set operation.

TEST SET REQUIREMENTS

Refer to the 3900 Series Operation Manual for information on the following:

- Safety Precautions
- Power Requirements
- Platform Performance Data Specifications
- Repacking/Shipping Test Set

THIS PAGE INTENTIONALLY LEFT BLANK.

Contents

CHAPTER 1 GENERAL DESCRIPTION

Chapter describes ARIB System capabilities and system access.

CHAPTER 2 ARIB SYSTEM TILES

Chapter describes ARIB System function tiles.

CHAPTER 3 ARIB CHANNEL LOGGER

Chapter describes ARIB System Channel Logger function.

CHAPTER A ARIB TERMS AND ABBREVIATIONS

Chapter describes ARIB System terms and abbreviations.

THIS PAGE INTENTIONALLY LEFT BLANK.

Table of Contents

General Description 1 - 1

ARIB Option Overview	1 - 1
Scope of Manual	1 - 1
ARIB Option Installation	1 - 2
Factory Installed Option	1 - 2
Post Production Option	1 - 2
Verifying ARIB Option Installation	1 - 2

ARIB System Tiles 2 - 1

Introduction	2 - 1
ARIB System Tile Layout	2 - 1
Audio Signal Routing	2 - 2
Audio/Demod Signal Routing	2 - 2
ARIB Configuration Tiles	2 - 3
Offsets Configuration Tile	2 - 3
Offsets Cable Loss Measurements	2 - 4
UUT Measurements Limits Configuration Tile	2 - 6
Test Tiles	2 - 7
Audio Generator Tile	2 - 7
Audio Input Tile	2 - 9
Constellation Tile	2 - 10
Distribution Tile	2 - 11
Eye Diagram Tile	2 - 12
Generator Modulation Tile	2 - 13
Power Over Time Tile	2 - 15
RF Control Tile	2 - 17
UUT Measurements Tile	2 - 20

ARIB Channel Logger 3 - 1

Introduction	3 - 1
Viewing Application	3 - 1
Connecting Equipment	3 - 1
ARIB XML Command Structure	3 - 2
<burst></burst>	3 - 2
Filter Parameters	3 - 3
<LogFilter></LogFilter>	3 - 3

ARIB Terms and AbbreviationsA - 1

Chapter 1 - General Description

1.1 ARIB OPTION OVERVIEW

The 3900 ARIB Test System (390XOPT460) is an optional test system developed by VIAVI to support the testing of digital two-way radio systems. The 3900 ARIB Test System Option provides the user with the following capabilities:

- Ability to lock/unlock paired generator and receiver frequencies;
- Ability to receive, demodulate and analyze ARIB modulated signals;
- Ability to perform RF and modulation parametric tests on the Unit Under Test (UUT);
- Distribution, Constellation and Eye Diagram graph plots;
- Variety of UUT measurements including Bit Error Rate, Signal Power, Frequency Error, Symbol Clock Error, Symbol Deviation and FSK Error;
- Power Profile Over Time Display Tile;
- Spectrum Analyzer, Channel Analyzer and Oscilloscope are available within the ARIB Test System.

1.2 SCOPE OF MANUAL

The 3900 ARIB Option Manual describes functions associated with the 3900 ARIB Test System. Refer to the 3900 Operation Manual for use of the following inherent base functions:

- Test Set Instruments
- Tone Encoding
- Tone Decoding

1.3 ARIB OPTION INSTALLATION

1.3.1 Factory Installed Option

When ARIB is purchased as a factory installed option the ARIB Software Option is ready to use upon receipt.

1.3.2 Post Production Option

When the ARIB Software Option is purchased post production the option software and option license files must be installed in the Test Set. Refer to the 3900 Operation Manual for Option Installation and Software Upgrade Procedures.

1.3.3 Verifying ARIB Option Installation

To check the status of installed options when operating in Test Mode:

STEP	PROCEDURE
------	-----------

1. Push the UTILS Key twice to access the Utils floating menu.
2. Select Software Settings, License from the floating menu.

The License Tile displays a list of installed options (refer to Fig. 1-1). ARIB is 390XOPT460. The option list varies according to the features installed on the Test Set. "Try before you buy" options have an expiration date.

NOTE	The Software Upgrade Tile also contains a list of installed options as well as the software version.
-------------	--

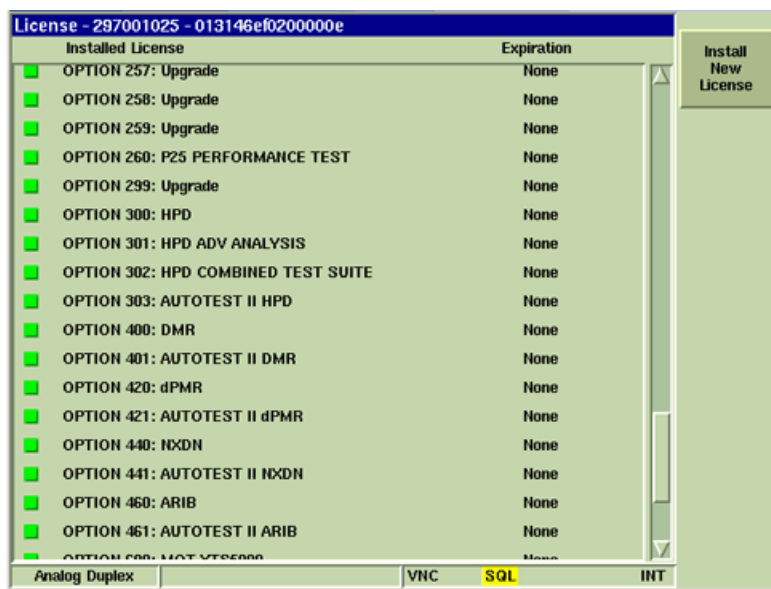


Fig. 1-1 3900 License Tile

Chapter 2 - ARIB System Tiles

2.1 INTRODUCTION

This chapter describes ARIB Tile layout and provides an operational description of ARIB System Tiles.

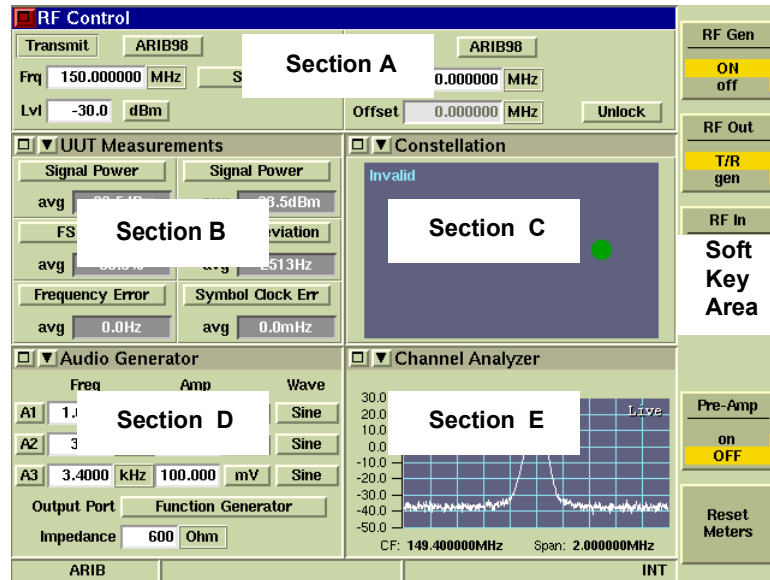


Fig. 2-1 ARIB Tile Layout

2.2 ARIB SYSTEM TILE LAYOUT

The ARIB Display Tiles can be configured according to test requirements. Each section of the display is configured using the drop-down menu on the title bar of each tile.

- Section A of the ARIB User Screen always displays the RF Control Tile when the Tiles are minimized.
- ARIB Test functions are selected from the drop-down menu located on the Tile menus on Sections B through E.
- ARIB includes access to the Channel Analyzer, Spectrum Analyzer and Oscilloscope. Use of the Channel Analyzer, Spectrum Analyzer and Oscilloscope are described in the 3900 Series Operation Manual.

2.3 AUDIO SIGNAL ROUTING

2.3.1 Audio/Demod Signal Routing

Audio/demod signal routing is configured by pressing the Assign Key on the Front Panel. Pressing the Assign Key displays a group of soft keys. The Speaker Toggle Soft Key selects the source and routing of the demod/audio signal applied to the Test Set's loudspeaker.

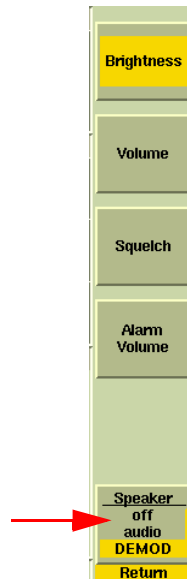


Fig. 2-2 Assign Key - Soft Key Sub-menu

2.3.1.A Field Definitions

2.3.1.A.1 Off

No audio input is being routed to the speaker.

2.3.1.A.2 Audio

Routes the incoming signal from the Audio Input connector to the speaker.

2.3.1.A.3 Demod

Routes the incoming signal from the FGEN Connector to the speaker.

2.4 ARIB CONFIGURATION TILES

2.4.1 Offsets Configuration Tile

The Offsets Configuration Tile allows users to define Generator (Tx) and Receiver (Rx) Level offsets.

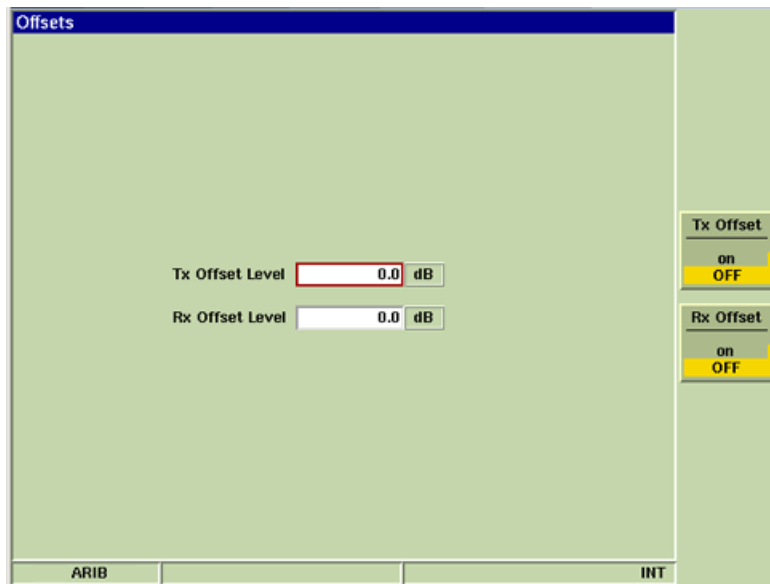


Fig. 2-3 Offsets Configuration Tile

2.4.1.A Field/Soft Key Definition

2.4.1.A.1 Tx Offset Level

Defines RF Generator Level Offset value.

2.4.1.A.2 Rx Offset Level

Defines Receiver Level Offset value.

2.4.1.A.3 TX Offset/Rx Offset Soft Keys

Enables/Disables defined Tx and Rx offset values.

2.4.2 Offsets Cable Loss Measurements

The Cable Loss Measurements functionality provides users with the ability to use the Test Set's Tracking Generator to evaluate a test cable in order to compensate for any cable loss and to characterize attenuators and other devices which impart a gain or loss.

NOTE Cable Loss Measurements are enabled when the 3900 Tracking Generator Option is installed in the Test Set.

2.4.2.A Field/Soft Key Definitions

2.4.2.A.1 Cable Loss File Menu

The Cable Loss File Menu is enabled when the Tracking Generator Option is installed in the Test Set. This menu loads a stored Cable Loss trace file which contains data that defines the RF Generator or RF Analyzer Level Offset by the offset value in the Cable Loss Trace.

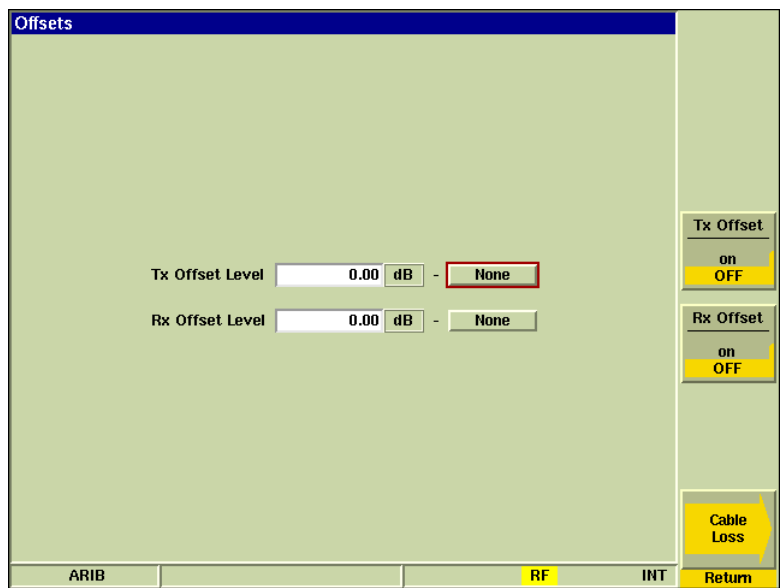


Fig. 2-4 Cable Loss Parameters Enabled

NOTE The Cable Loss File Menu is only populated when one or more Cable Loss traces has been created.

2.4.2.A.2 Cable Loss Soft Key

The Cable Loss Soft Key is enabled when the Tracking Generator Option is installed in the Test Set. The Cable Loss Soft Key accesses soft keys which are used to create tables of amplitude loss for up to three test cables of different configurations.

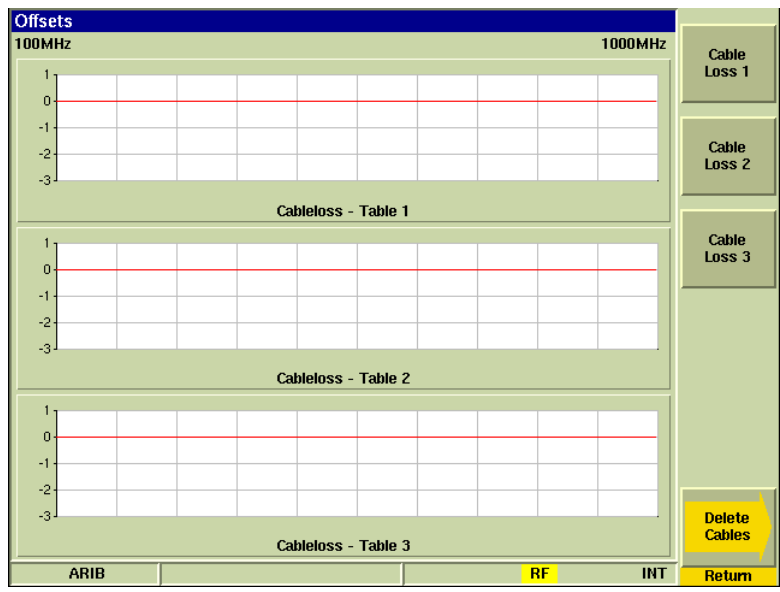


Fig. 2-5 Cable Loss Tables

Pressing the Cable Loss 1, 2 or 3 Soft Key initiates a guided procedure for defining a cable loss table. The Test Set provides a series of on-screen instructions that the user follows to create each table.

NOTE	<p>Cable Loss files are stored in the Test Set's Cable Loss Files directory.</p> <p>Stored Cable Loss Files can be transferred from one Test Set to another using the File Management Tile. The receiving Test Set must have the Tracking Generator Option installed in order to transfer the files.</p> <p>Transferred files must be placed in the receiving Test Set's Cable Loss Files directory in order for the file to be accessible.</p>
-------------	---

2.4.3 UUT Measurements Limits Configuration Tile

The UUT Measurements Configuration Tile defines the limits for UUT meter readings.

UUT Measurements Limits					
Broadband Power	Units	W	Upper Limit	100	uW Disabled
	Averages	1	Lower Limit	100	uW Disabled
Frequency Err			Upper Limit	0.00	Hz Disabled
	Averages	1	Lower Limit	0.00	Hz Disabled
FSK Error			Upper Limit	0.00	% Disabled
	Averages	1	Lower Limit	0.00	% Disabled
Signal Power	Units	dBm	Upper Limit	0.00	dBm Disabled
	Averages	1	Lower Limit	0.00	dBm Disabled
Symbol Clock Error	Units	Hz	Upper Limit	0.00	mHz Disabled
	Averages	1	Lower Limit	0.00	mHz Disabled
Symbol Deviation			Upper Limit	0.00	Hz Disabled
	Averages	1	Lower Limit	0.00	Hz Disabled
ARIB				INT	
					Return

Fig. 2-6 UUT Measurements Limits Configuration Tile

2.4.3.A Field/Soft Key Definitions

2.4.3.A.1 Disabled/Enabled

The Enable/Disable Toggle button turns defined limits on and off. Default values are applied if values are not defined by user.

2.4.3.A.2 Upper Limit

The Upper Limit function sets a maximum acceptable reading for a specific measurement. When a measured level exceeds the enabled Upper Limit, the Meter Bar and reading background on the Measurement Tiles turns RED.

When readings are within enabled Upper and Lower limits the Meter Bar and reading background on the Measurement Tiles turns GREEN.

2.4.3.A.3 Lower Limit

When a measured level drops below the enabled Lower Limit, the Meter Bar and reading background of the Measurement Tiles turns BLUE.

When readings are within enabled Upper and Lower limits the Meter Bar and reading background on the Measurement Tiles turns GREEN.

2.4.3.A.4 Units

Selects the unit of measure for applicable measurement.

2.4.3.A.5 Averages

Specifies the number of bursts over which data is averaged for each measurement. Values can be set independently for each meter.

2.4.3.A.6 Set All Averages To Soft Key

Specifies the number of bursts over which data is averaged for all measurements. Values can also be set independently for each meter.

2.5 TEST TILES

2.5.1 Audio Generator Tile

The Audio Generator Tile defines audio generator parameters for use in testing Analog radio systems. Parameters can be defined separately for each generator. The Test Set is configured to allow the user to simultaneously enable the audio generators on the Audio Generators Tile and the modulation generators on the Generator Modulation Tile.

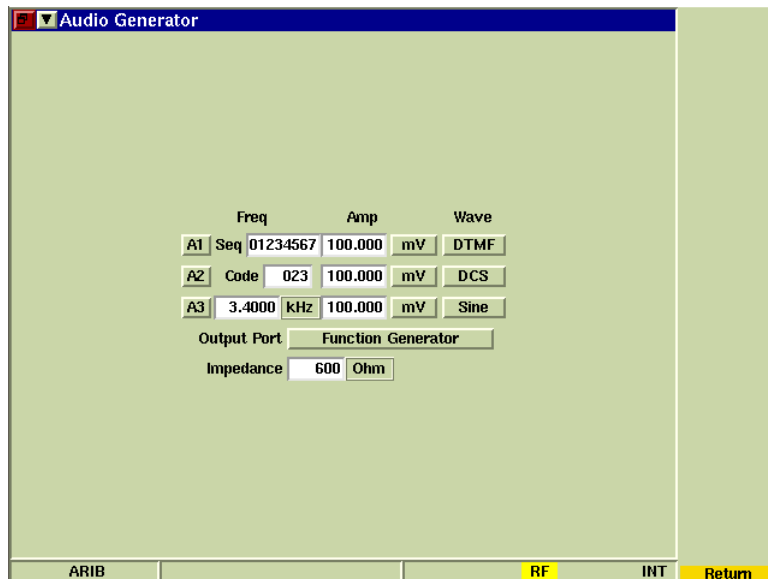


Fig. 2-7 Audio Generator Tile

2.5.1.A AF Generator Field Definitions

2.5.1.A.1 A1, A2, A3 Toggle Buttons

The A1, A2 and A3 toggle buttons enable/disable corresponding audio generator. AF Generators can be enabled in combination or individually.

2.5.1.A.2 Frequency

Sets the frequency for each AF generator. Frequency can be specified in kHz or Hz as defined by user.

2.5.1.A.3 Amplitude

Defines the amplitude for each AF Generator. Amplitude can be specified in V or mV as defined by user.

2.5.1.A.4 Waveform

Defines the Waveform for each AF Generator.

2.5.1.A.5 Sequence

The Sequence field is enabled when DTMF Waveform is selected. The field defines/indicates the DTMF Sequence of the DTMF Waveform.

2.5.1.A.6 CODE

The Code field is enabled when DCS or DCSINV Waveform is selected. The field defines/indicates the DCS codeword of the generated signal.

2.5.1.A.7 Output Port

Setting the Output Port to AF Out routes the output from the AF Generators to the FCTN GEN/Demod Connector. Selecting Demod Out routes the demodulated audio signal to the FCTN/GEN Demod Out Connector.

2.5.1.A.8 Impedance

Defines the external termination value used to calculate the AF Generator power level.

2.5.2 Audio Input Tile

The Audio Input Tile contains parameters for configuring audio signal routing.

NOTE

The Rx Protocol field on the RF Control Tile must be set to Analog in order to perform Audio Measurements.

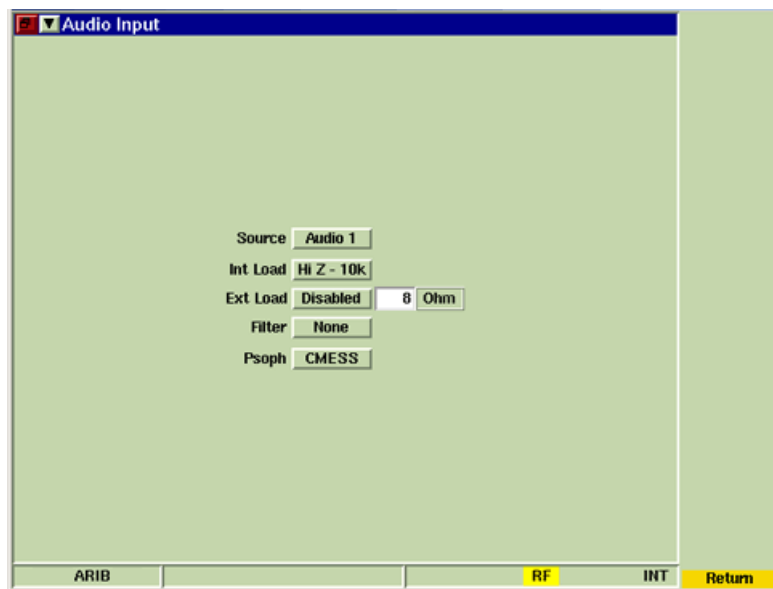


Fig. 2-8 Audio Input Tile

2.5.2.A Field Definitions

2.5.2.A.1 Source

Selects the Audio input source.

2.5.2.A.2 Int Load

Selects either the 10 kOhm or 600 Ohm internal load to be applied at the Audio 1 or Audio 2 Input. Audio Balanced Input applies a fixed internal load of 600 Ohms.

2.5.2.A.3 External Load

The 3900 allows the user to define an external load value which is applied at the Audio 1 or Audio 2 Input ports. The external load value is applied to AF Level dBm or Watt measurements when the External Load is enabled.

2.5.2.A.4 External Load Enable

The Ext Load toggle button enables/disables the use of an external load.

2.5.2.A.5 Filter

Selects a measurement filter to include in the measurement path.

2.5.2.A.6 Psoph

Selects CMESS or CCITT Psophometric weighting filter when the Psoph filter is selected from any of the Filter selection drop-down menus. Psoph filters are typically used for SINAD measurements, either Demod or Audio.

2.5.3 Constellation Tile

The Constellation tile is used to determine proper operation of the transmitter. The four points represent the four deviation states (DIBIT Symbols) of the ARIB FSK modulation shown below. The green plot fields indicate the expected location of plot clusters.

Information Bits	Symbol	4FSK Deviation
01	+3	+0.945 kHz
00	+1	+0.315 kHz
10	-1	-0.315 kHz
11	-3	-0.945 kHz

DIBIT Symbol Mapping to 4FSK Deviation

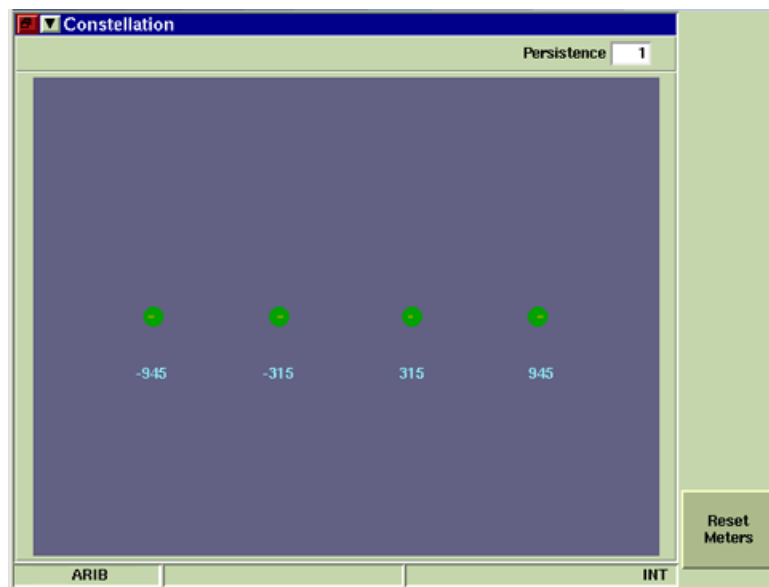


Fig. 2-9 Constellation Tile

2.5.3.A Field/Soft Key Definitions

2.5.3.A.1 Persistence

Specifies how many trace plots are shown simultaneously on the display field. Selectable range is 1 to 10. Selecting 1 means that only one burst or time slot is displayed on the display field. Selecting 10 means the last 10 bursts or time slots are displayed simultaneously on the display field.

2.5.3.A.2 Reset Meters Soft Key

The Reset Meters Soft Key clears and resets the meter readings.

2.5.4 Distribution Tile

The Distribution Tile shows the relative number of symbols in relation to each other. The plot shows the four deviation points and the level of symbols accumulated. For example, a higher level on the +1 or +315 Hz deviation point would indicate that more “00” information bits were received compared to the other deviation points.

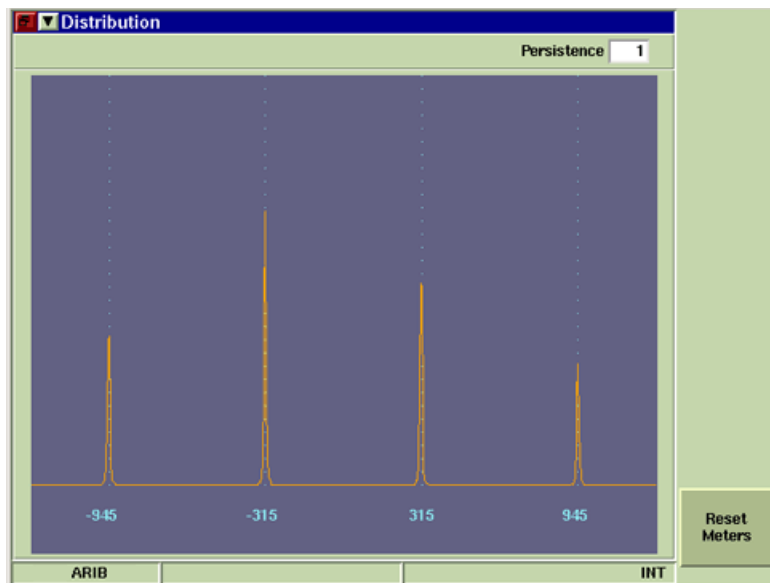


Fig. 2-10 Distribution Tile

2.5.4.A Field/Soft Key Definitions

2.5.4.A.1 Persistence

Specifies how many trace plots are shown simultaneously on the display field. Selectable range is 1 to 10. Selecting 1 means that only one burst or time slot is displayed on the display field. Selecting 10 means the last 10 bursts or time slots are displayed simultaneously on the display field.

2.5.4.A.2 Reset Meters Soft Key

The Reset Meters Soft Key clears and resets the meter readings.

2.5.5 Eye Diagram Tile

The Eye Diagram is used to plot the demodulated signal from one slot of the ARIB signal. The plot shows the demodulated signal periods from that slot which allows the user to observe the deviation accuracy of the demodulated signal at the symbol points. The point at which symbol deviation is measured is referenced to the symbol clock to determine the deviation of the waveform at the symbol time.

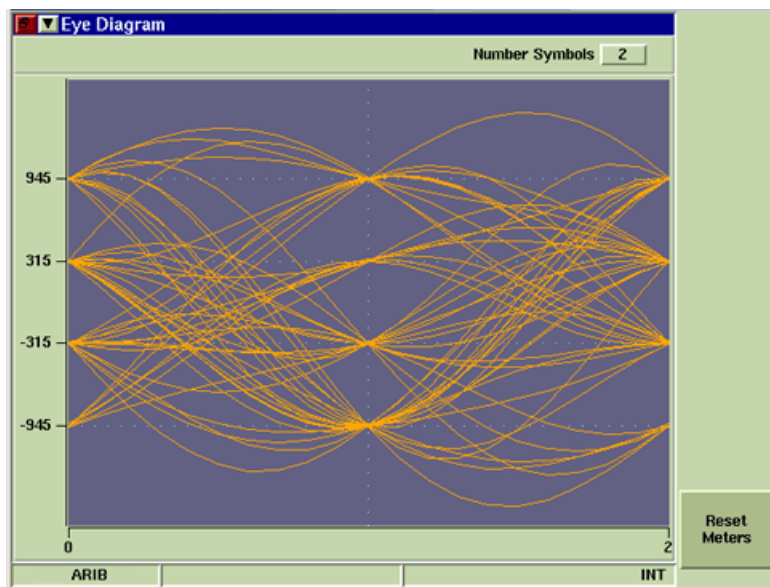


Fig. 2-11 Eye Diagram Tile - 2 Symbols

2.5.5.A Field/Soft Key Definitions

2.5.5.A.1 Number Symbols

Defines the horizontal scale of the display field. Lowering the number or symbols shows more detail of the signal pattern.

2.5.5.A.2 Reset Meters Soft Key

The Reset Meters Soft Key clears and resets the meter readings.

2.5.6 Generator Modulation Tile

The Generator Modulation Tile defines modulation generator parameters for use in testing Analog radio systems. Parameters can be defined separately for each modulator. The Test Set is configured to allow the user to simultaneously enable the modulation generators on the Generator Modulation Tile and the AF generators on the Audio Generators Tile.

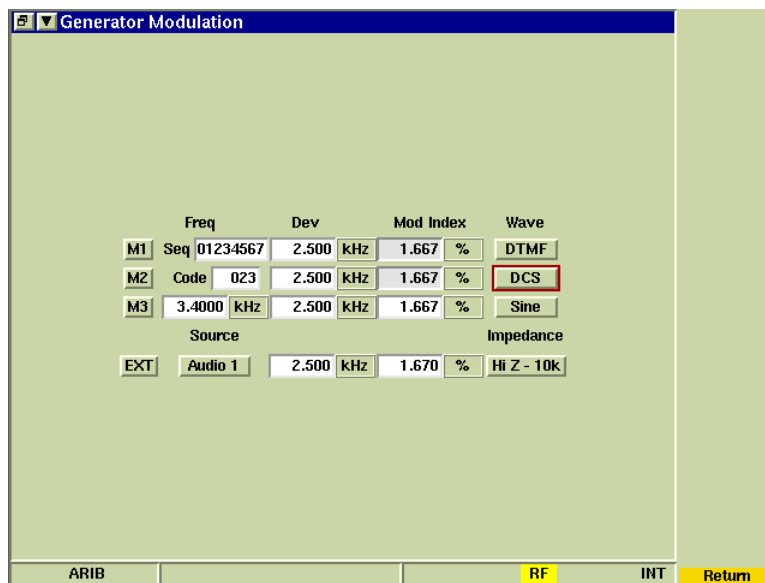


Fig. 2-12 Generator Modulation Tile

2.5.6.A Modulation Generator Field Definitions

2.5.6.A.1 M1, M2, M3 Buttons

The Modulator buttons enable/disable each modulator. Modulators can only be enabled one at a time.

2.5.6.A.2 Frequency

Sets the frequency for each Modulation generator.

2.5.6.A.3 Deviation

Defines the Deviation for each generator when FM modulation is selected. When this value is defined, the Modulation Index value updates to display the value as a percent.

2.5.6.A.4 Mod (Modulation) Index

The Mod Index field defines the modulation level as a percent of the maximum deviation setting (150 kHz). When a Mod Index value is entered, the Deviation value updates to display the value in kHz. For example, when the Mod Index value is set to 100%, the Deviation value updates to 150 kHz, the maximum Deviation setting.

2.5.6.A.5 Waveform

Selects Waveform for each modulator.

2.5.6.A.6 Sequence

The Sequence field is enabled when DTMF Waveform is selected. The field defines/indicates the DTMF Sequence of the DTMF Waveform.

2.5.6.A.7 CODE

The Code field is enabled when DCS or DCSINV Waveform is selected. The field defines/indicates the DCS codeword of the generated signal.

2.5.6.A.8 EXT Toggle Button

The EXT Toggle Button enables/disables an external modulation source.

2.5.6.A.9 Source

Selects the Audio input source.

2.5.6.A.10 Impedance

External source can be set to un-terminated high impedance (Hi Z), or include a 600 Ohm termination (600 Ohms).

2.5.7 Power Over Time Tile

The Power Over Time Tile displays the power measurement of the received signal over a specified period of time. This measurement provides an indication of the transmitter's stability.

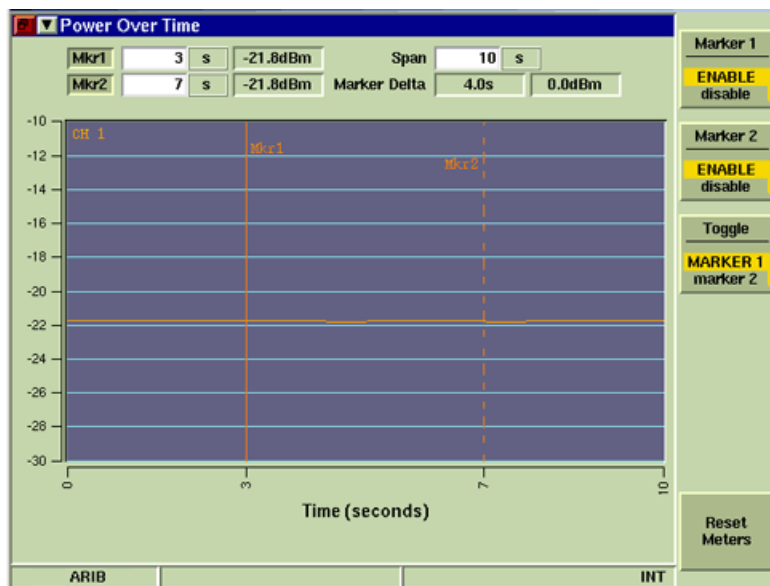


Fig. 2-13 Power Over Time Tile

2.5.7.A Field/Soft Key Definitions

2.5.7.A.1 Mkr1/Mkr2

The Mkr1 and Mkr2 toggle buttons enable Marker 1 and Marker 2. Markers must be enabled to edit the Marker position fields. Status and functionality of these toggle buttons is linked to the Marker 1 and Marker 2 Soft Keys.

2.5.7.A.2 Marker Position

The Position Field allows the user to enter a value to specify Marker position on the graph field. A marker must be enabled and selected before this field can be edited.

2.5.7.A.3 Power Measurement

The data fields beside each marker position field indicate the power reading at the signal point.

2.5.7.A.4 Marker Delta

When both markers are defined and enabled the Delta field indicates the difference between the position and power measurement at each point on the signal.

2.5.7.A.5 Span

Span sets the length of time (horizontal scale) over which the power measurement is displayed. Maximum Span setting is 1800 seconds.

2.5.7.A.6 Marker 1/Marker 2 Soft Key

The Marker 1 and Marker 2 Soft Keys enables or disables the corresponding marker. Markers can also be enabled using the Marker On/Off toggle button.

2.5.7.A.7 Toggle Marker Soft Key

The Toggle Marker Soft Key changes focus between Marker 1 and Marker 2 when both markers are enabled. The Toggle Marker Soft Key also controls the marker readings displayed at the top of the minimized tile. Each press of this Soft Key changes the source of the measurements through Mkr1, Mkr2 and Delta readouts.

2.5.7.A.8 Reset Meters Soft Key

The Reset Meters Soft Key clears and resets the meter readings.

2.5.8 RF Control Tile

The RF Control Tile configures the Test Set for testing the physical layer of ARIB radio systems. RF Control Tile fields must be configured according to the operating parameters of the Unit Under Test (UUT) to obtain valid test data.

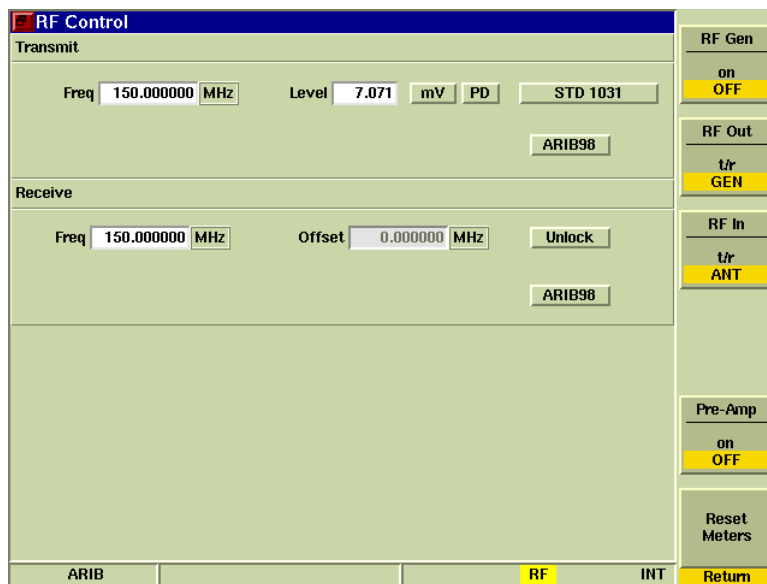


Fig. 2-14 RF Control Tile - ARIB Protocol

2.5.8.A Transmit Field Definitions

2.5.8.A.1 Frq/Freq (Frequency)

The Transmit Frequency defines the carrier frequency of the ARIB signal being generated by the Test Set and is used to determine proper receiver operation.

2.5.8.A.2 Level

Level defines the output power of the 3900 ARIB transmit signal from either the T/R or the GEN Connector.

2.5.8.A.3 PD / EMF

When the RF Output Level unit of measurement is Volts, the value can be displayed as EMF or PD. This field is enabled when Level is set to Volts.

2.5.8.A.4 Units (Level)

The units drop-down menu selects the output power level unit of measure.

2.5.8.A.5 Pattern

The Pattern drop-down menu selects the type of pattern the Test Set sends to the UUT.

2.5.8.A.6 Protocol

Sets the Protocol for the Transmit Channel.

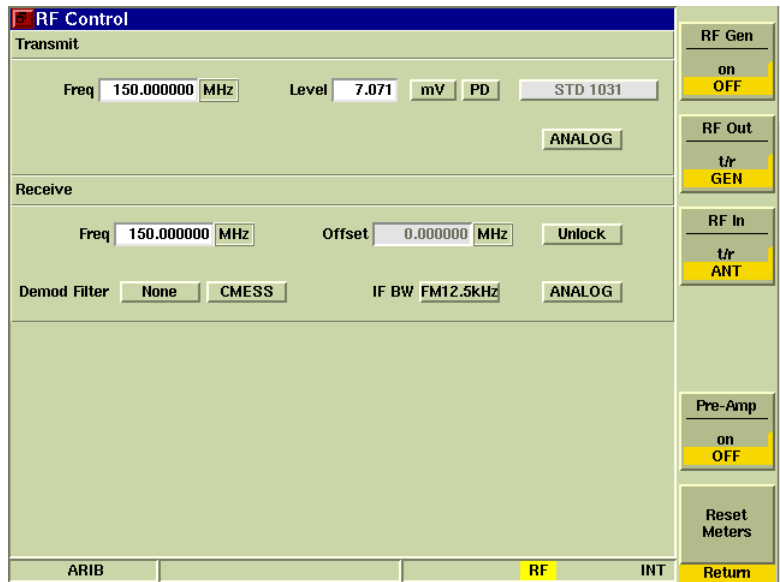


Fig. 2-15 RF Control Tile - Analog Protocol

2.5.8.B Receive Field Definitions

2.5.8.B.1 Frq/Freq (Frequency)

This field defines the receiver frequency. For accurate readings, the receive frequency should be set to the UUT transmit frequency.

2.5.8.B.2 Offset

When set to LOCK, changing the Receive or Transmit Frequency offsets the other frequency by the value specified in the Offset field. For example, setting the Receiver frequency to 150 MHz, with an offset of 2.5 MHz, results in the Transmit frequency updating to 152.5 MHz. Or, if the Transmit frequency is set to 150.0 MHz, with an Offset of 2.5 MHz, the Receive frequency updates to 147.5 MHz.

When set to UNLOCK, a value can be entered independently for either the Transmit Frequency or the Receiver Frequency.

2.5.8.B.3 Lock/Unlock

Locks/Unlocks frequency offset in relation to the Transmit and Receive frequencies.

2.5.8.B.4 Audio Filter Type

Selects a measurement filter to include in the measurement path.

2.5.8.B.5 Psoph Filter

Selects the type of Psoph filter included in the measurement path. The Audio Filter type must be set to PSOPH for this parameter to be valid.

2.5.8.B.6 IF Bandwidth

The IF BW field selects the IF Bandwidth Filter included in the demodulation path.

2.5.8.B.7 Protocol

Sets the Protocol for the Receive Channel.

2.5.8.C Soft Key Definitions

2.5.8.C.1 RF Gen Soft Key

Selects and indicates the On/Off state of the RF Generator output from the Test Set. When the generator is disabled, an RF OFF indicator is shown on the Tile.

2.5.8.C.2 RF Out Soft Key

The RF Out Soft Key controls the RF Output signal routing. Select either the GEN (Generator) Connector or T/R Connector as RF Output port.

2.5.8.C.3 RF In Soft Key

The RF In Soft Key controls the RF Input signal routing. Select either the T/R Connector or ANT (Antenna) Connector as the RF Input port.

2.5.8.C.4 Pre-Amp Soft Key

The 3900 is equipped with an internal 15 dB broadband amplifier that affects the T/R Connector and ANT (Antenna) Connector. When Pre-Amp is turned ON, the 3900 has a typical noise figure of -9 dB leading to a noise floor level of approximately -140 dBm in the Spectrum Analyzer (RBW = 300 Hz) and approximately -126 dBm for the Inband Power Meter (IF = 6.25 kHz). Using the Pre-Amp feature increases the sensitivity of the 3900.

NOTE

When Pre-Amp is used, special attention is required; it is a broadband amplifier and could lead to saturation or compression problems in the receiver chain if the signal of interest is very low, but a strong out of band signal is present.

2.5.8.C.5 Reset Meters Soft Key

The Reset Meters Soft Key clears and resets the meter readings.

2.5.9 UUT Measurements Tile

The UUT Measurements Tile displays readings taken from the signal being transmitted by the UUT to the Test Set.

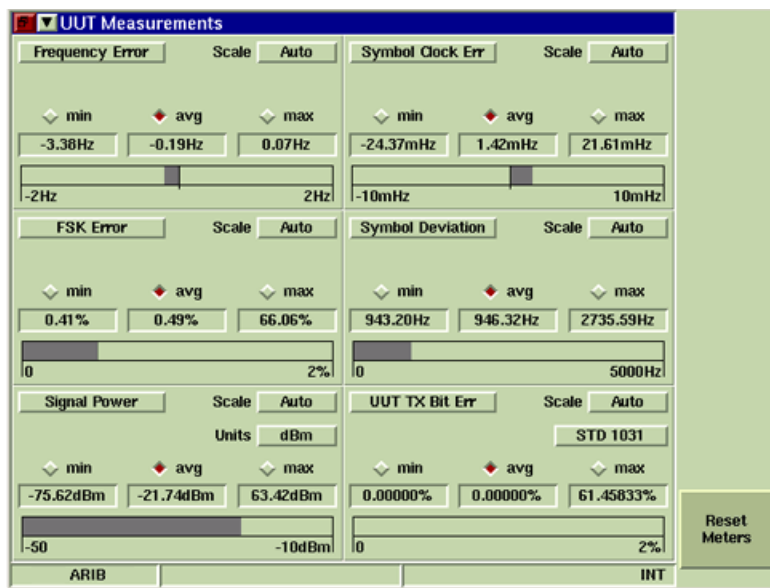


Fig. 2-16 UUT Measurements Tile

2.5.9.A Field/Soft Key Definitions

2.5.9.A.1 min/avg/max Reading Indicators

These radio buttons select the reading displayed on the bar graphs and the reading displayed when the UUT Measurements Display Tile is minimized.

Selecting min displays the lowest recorded reading.

Selecting avg displays the average of all recorded readings over the period of defined bursts (default setting).

Selecting max displays the highest recorded reading.

2.5.9.A.2 Bar Graph

The Meter Bar is a single, linear indicator that provides a visual measurement reading based on a user defined scale. Upper and lower limit indicators are set on the UUT Measurements Limits Configuration Tile.

2.5.9.A.3 Scale

Defines the display of the Meter Bar. User selection is made from a drop-down box offering the choice of Auto (default value) or a fixed value.

2.5.9.A.4 Reset Meters Soft Key

The Reset Meters Soft Key clears and resets the meter readings.

2.5.9.B Measurement Meters

The drop-down menu on each section of the UUT Measurements Tile selects the type of meter to be displayed in that section. The Audio and Demod meters are enabled when Analog protocol is selected on the Tx and Rx signals.

2.5.9.B.1 Audio Frequency Meter

The Audio Frequency Meter measures the frequency of the audio signal received at the Test Set's selected input connector (i.e., Audio 1 or MIC Connector).

2.5.9.B.2 Audio Level Meter

The Audio Level Meter measures the amplitude and audio signal received at the Test Set's selected input connector (i.e., Audio 1 or MIC Connector).

2.5.9.B.3 Broadband Power

The Broadband Power Meter measures input power levels at the T/R Connector over a range of 100 mW to 125 W. The Broadband Power Meter is frequency independent which allows the user to measure and align transmitter power settings without adjusting the 3900's receiver frequency to match the transmitter frequency.

2.5.9.B.4 Demod Frequency Meter

The Demod Frequency Meter measures the frequency of the demodulated signal received at the Test Set's selected input connector (i.e., Audio 1 or MIC Connector).

2.5.9.B.5 Distortion Meters (Audio/Demod)

The Audio Distortion Meter measures the amount of audio distortion a radio receiver may add to an audio signal during the demodulation process. The Demod Distortion Meter measures the amount of audio distortion created by a radio transmitter when an audio signal is modulated.

2.5.9.B.6 FM Deviation Meter

The FM Deviation Meter measures the amount of deviation present on an FM Modulated RF Signal received by the 3900. When Analog Protocol is selected, the FM Deviation Meter does not include a filter in the signal path.

2.5.9.B.7 Frequency Error

The Frequency Error Meter measures the frequency error of the incoming RF carrier signal. Frequency Error is calculated as the difference between the frequency of the received signal and the receive frequency defined on the RF Control Tile.

2.5.9.B.8 FSK Error

The FSK Error Meter measures rms deviation error at the symbol deviation points of the signal. FSK Error is measured over 60 ms and is expressed as the percentage of the deviation.

2.5.9.B.9 Hum & Noise Meters (Audio/Demod)

The Audio Hum & Noise Meter measures the amount of hum and noise a radio receiver may add to the audio signal during the demodulation process. The Demod Hum & Noise Meter measures the level of hum and noise created by a radio transmitter when an audio signal is modulated.

2.5.9.B.10 Inband Power Meter

The Inband Power Meter indicates the total power measurement of the selected channel in the received RF Signal. Analog Protocol must be selected to enable this meter.

2.5.9.B.11 Signal Power

The Signal Power Meter is a tuned power meter that indicates the amount of RF Energy that is contained within the 3900's selected receiver bandwidth (i.e., 12.5 kHz). The Signal Power Meter is tuned to a specific frequency, giving the ability to selectively measure the power of one channel when other channels are present.

Signal Power can be measured at the T/R or ANT Connector. The T/R Connector provides measurements from -60 to +51 dBm. The ANT Connector provides the ability to measure levels from -100 to +10 dBm.

Drop-down menu selects unit of measurement as dBm or Watts. When Watts is selected and the reading falls below 100 mW, the meter background turns GRAY, indicating the reading may be inaccurate. If this occurs, switch the unit of measurement to dBm to obtain an accurate reading.

2.5.9.B.12 Sinad Meter (Audio/Demod)

The AF SINAD Meter measures the receive quality of a radio receiver. The Demod SINAD Meter measures the quality of the incoming RF Signal being demodulated by the Test Set. This meter also measures the quality of a radio transmitter when an audio signal is modulated. Meter is enabled when Analog protocol is selected on the Tx and Rx signals.

2.5.9.B.13 SNR Meter (Audio/Demod)

The Audio/Demod SNR Meters can be configured for Hum and Noise or Normal SNR measurements. Analog Protocol must be selected to enable these meters. Hum and Noise enables a Reference Lock button on the meter.

2.5.9.B.14 Symbol Clock Error

The Symbol Clock Error Meter measures the symbol clock of the incoming ARIB signal over 60 ms. Symbol Clock Error measurements should not exceed ± 48 mHz.

2.5.9.B.15 Symbol Deviation

The Symbol Deviation Meter measures the deviation of the ARIB signal at symbol time, normalized to the 945 Hz symbol point. Symbol Deviation is measured over 60 ms.

Symbol deviation measurements should be > 850.5 and < 1039.5 .

2.5.9.B.16 UUT Tx Bit Error

The UUT Tx BER Meter compares incoming ARIB symbol data to a standard pattern to determine errors in signal processing.

Chapter 3 - ARIB Channel Logger

3.1 INTRODUCTION

The ARIB Channel Logger (390XOPT462) allows XML formatted information, referred to in this manual as XML files, to be relayed to and from a remote PC location and a Test Set. Each XML file contains processing instructions, a timestamp, and MAC header and MAC data blocks. When the PC and Test Set are connected, the Test Set sends any valid received ARIB data to the PC in XML format. The PC receives the XML file, which can be saved to a file, edited and re-transmitted to the Test Set, or deleted.

NOTE

Received XML files can be viewed by either a text editor or a customer developed Viewing Application. This is an <i>option enabled</i> feature.

3.2 VIEWING APPLICATION

The following information is necessary to develop an internal viewing application:

- The Test Set Raw Data Service is 'listening' on TCP socket number 2222.
- The Test Set's IP address can be configured and accessed from the Network Utility Tile. Refer to the 3900 Series Operation Manual for use of this feature.
- Netcat application for transferring XML commands to and from the Test Set. Netcat is available at <http://www.vulnwatch.org/netcat/>.

3.3 CONNECTING EQUIPMENT

To use the User Data I/O Port, the PC and the Test Set must be operating on the same local network via an Ethernet cable. Once equipment is connected, XML files can be transmitted to and from the PC and the Test Set. In this configuration, the Test Set functions as a TCP socket "server" and the users PC application functions as a TCP "client." The port number used by the Test Set is 2222.

NOTE

The TCP socket on the PC should be opened in "blocking" mode so that XML data is not lost when it is sent to the Test Set. PC processing speed must be sufficient to allow it to accept the incoming data burst stream of XML lines.
--

3.4 ARIB XML COMMAND STRUCTURE

This section describes ARIB XML commands and command formatting instructions. This section is intended for users familiar with XML and therefore only describes XML commands specific to the ARIB Data I/O Port feature.

The ARIB RF Control Tile must be configured with the same settings defined in the XML command script prior to sending or receiving XML data.

3.4.1 <burst></burst>

The <burst> tag has the following attributes:

3.4.1.A timestamp

The timestamp command is an 8 digit hexadecimal number representing:

- On data sent to the Test Set: the time of transmission of the data in the burst.
- On data received from the Test Set: the time of reception of the burst.

The timestamp is optional on commands sent to the Test Set. It is present on data loads received from the Test Set

Times are all referenced from the first bit of the burst. They are relative to an arbitrary value, so timestamps should only be used is to compute the times between bursts in the same capture.

Timestamp resolution is 20 nsec, meaning a burst at 00000010 and a burst at 00000020 are 320 nsec apart (20 HEX - 10 HEX is 16 decimal, x 20 ns timestamp resolution is 320 nsec).

3.4.1.B phys_channel

This command specifies the channel (0 or 1) being transmitted or received.

- 0 = Channel 1
- 1 = Channel 2

3.4.1.C direction

This command specifies whether the signal is being transmitted (tx) or received (rx).

3.4.1.D detect

The field is used with receive only signals. Command indicates if received signal is valid or invalid.

3.4.1.E type

Indicates if data is an inbound service packet (isp) or outbound service packet (osp).

3.4.1.F timeslot

Indicates which timeslots in a TDMA system a specific data element is sent or received. The command is skipped when it is received in a non-TDMA mode system or when command is not applicable to command usage.

3.5 FILTER PARAMETERS

3.5.1 <LogFilter></LogFilter>

The user may specify what types of information are to be sent from the Test Set by using the <LogFilter> tag. This tag requires using the parameter "phys_channel", which has the same meaning as the "phys_channel" of the <burst> tag. The <LogFilter> tag requires using the following sub-tags (all sub-tags MUST be present), each of which is a boolean value (0/1 on/off true/false):

3.5.1.A <Environment></Environment>

The Environment tag controls the logging of Test Set configuration changes, such as received frequency, transmit frequency, etc.

3.5.1.B <Raw></Raw>

Raw controls the logging of raw octets received.

3.5.1.C <Protocol_Raw></Protocol_Raw>

Protocol_Raw controls the logging of raw protocol data (after decoding from the raw data stream but without interpretation).

3.5.1.D <Protocol_Cooked></Protocol_Cooked>

Protocol_Cooked controls the logging of protocol data with the data parsed into a more legible format.

3.5.1.E <Voice></Voice>

Voice controls logging of the voice data as sent to the vocoder.

3.5.1.F Example LogFilter:

```
<LogFilter phys_channel="1">
  <Environment>0</Environment>
  <Raw>0</Raw>
  <Protocol_Raw>0</Protocol_Raw>
  <Protocol_Cooked>0</Protocol_Cooked>
  <Voice>0</Voice>
</LogFilter>
```

NOTE	The following example DOES NOT WORK: it is missing some of the required subtags:
-------------	--

```
<LogFilter phys_channel="1">
  <Environment>0</Environment>
  <Raw>0</Raw>
</LogFilter>
```

THIS PAGE INTENTIONALLY LEFT BLANK.

Appendix A - ARIB Terms and Abbreviations

ARIB	Association of Radio Industries and Business
avg	Average reading
Bit Err	Bit Error Rate
CONFIG	Configuration
dB	decibel
dBm	decibel relative to 1 mW
dBV	decibel relative to 1 Volt
dBW	decibel relative to 1 Watt
frq/freq	Frequency
FSK	Frequency Shift Keying
GEN	Generate/Generator
GHz	Giga Hertz
Hz	Hertz
kHz	kilo Hertz
Lvl	Level
max	Maximum reading
MHz	Mega Hertz
min	Minimum reading
Mkr	Marker
Mod	Modulation
ms/msec	Millisecond
mW	milli-Watt
RF	Radio Frequency
Rx	Receive
TOS	Top of Scale
Tx	Transmit
UTILS	Utilities
UUT	Unit Under Test
VNC	Virtual Network Client/Virtual Network Computing
W	Watt

THIS PAGE INTENTIONALLY LEFT BLANK.



**Part of CD # 6047
Revision M0
Jan 2020**

VIAVI Solutions, Inc.

North America:	1.844.GO VIAVI / 1.844.468.4284
Latin America	+52 55 5543 6644
EMEA	+49 7121 862273
APAC	+1 512 201 6534
All Other Regions:	viavisolutions.com/contacts