

StrataSync™ Initial Setup Guide for

T-BERD/MTS 5800



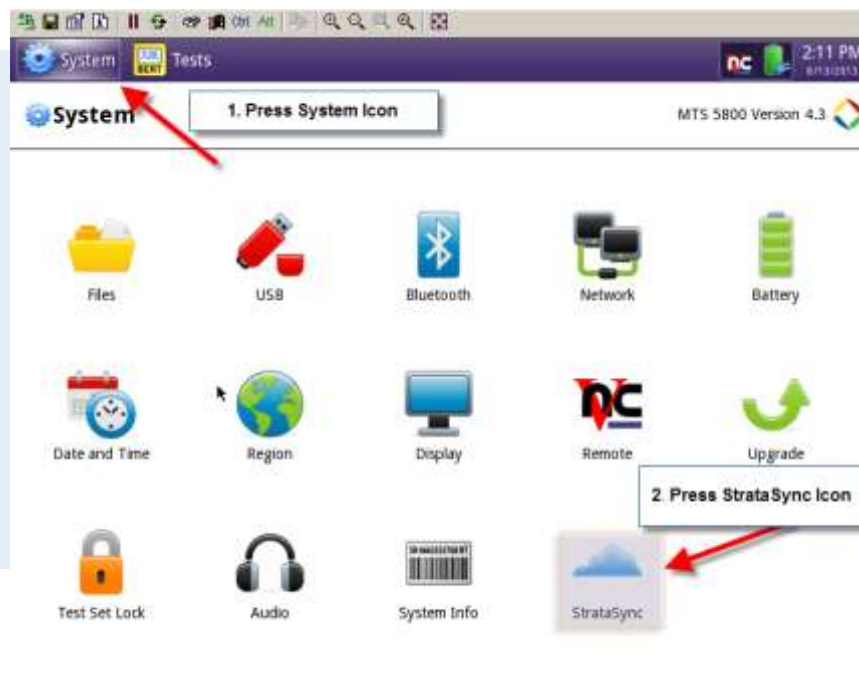
This guide is intended to assist the StrataSync™ administrator or user in the initial set up and configuration of their StrataSync™ enabled T-BERD/MTS 5800. This guide is for informational purposes and not intended to replace the on-line help system available from the Global Navigation Menu in StrataSync™.

Prepare the T-BERD/MTS 5800

Set Account ID (Tenant ID), Server Address and tech ID as follows:

-->Ensure instruments have at least the minimum required Firmware version installed to enable StrataSync™ (Firmware Version 4.3 or higher required) Firmware is available at <http://5800.updatemyunit.net>

1. Press the MTS 5800 System Icon in upper left of screen.
2. Press the StrataSync Icon.



3. Enter Server address as **stratasync.jdsu.com**
4. Enter your Customer Account ID Number.(Provided with account credentials, or via “System Info” on StrataSync account home screen
5. Enter the Technician ID

Connect to Internet via RJ45 cable

6. Click “Start Sync” button.

The screenshot displays the StrataSync configuration interface. At the top, there is a navigation bar with 'System' and 'Tests' tabs, and a status bar showing '2:56 PM 8/13/2013'. Below the navigation bar, the main header shows 'System > StrataSync' and 'MTS 5800 Version 4.3'. The main content area contains a form with the following fields and buttons:

- 3** Enter the address of the StrataSync server:
Server address:
- 4** Enter account details, needed to authenticate with the server:
Account ID:
- 5** Technician ID:
- 6** Start Sync

Below the form, the text "Successfully synchronized with server." is displayed. A "Reset to Defaults" button is located at the bottom right of the form area.