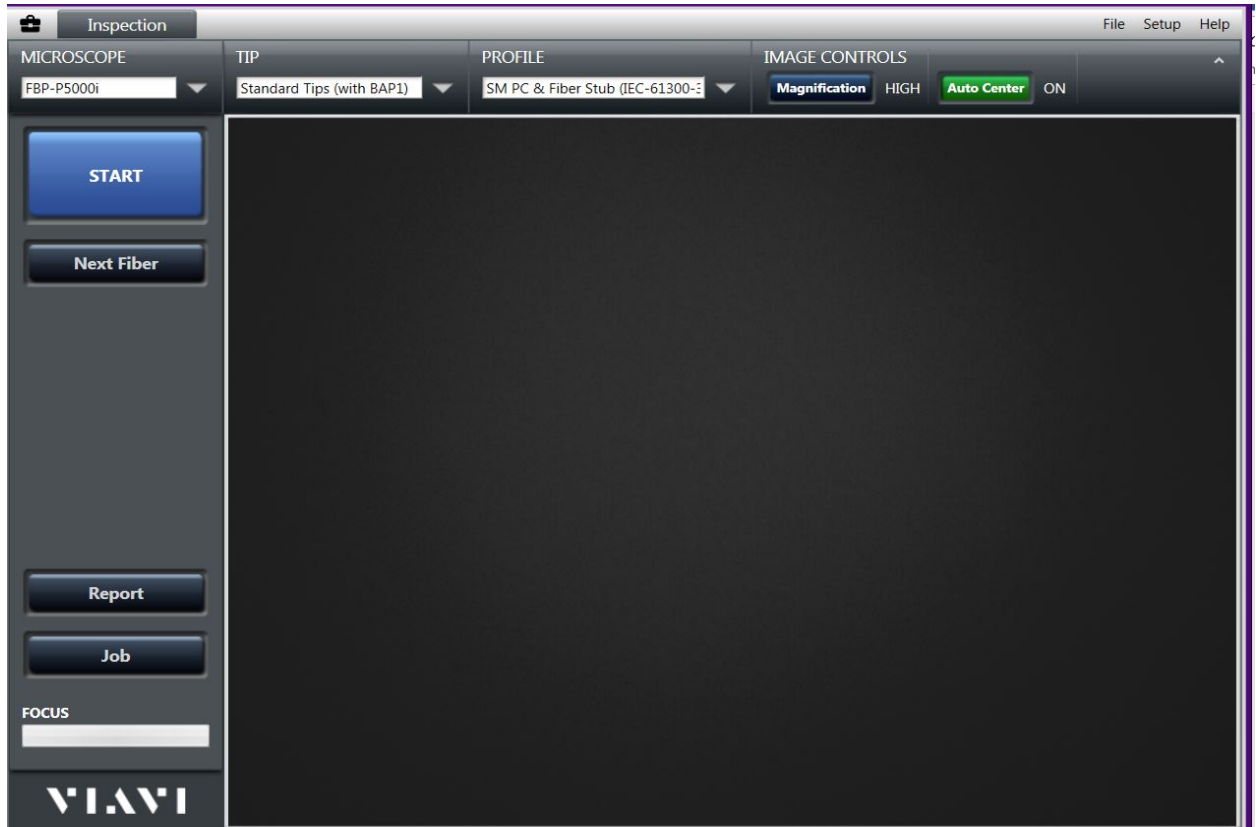


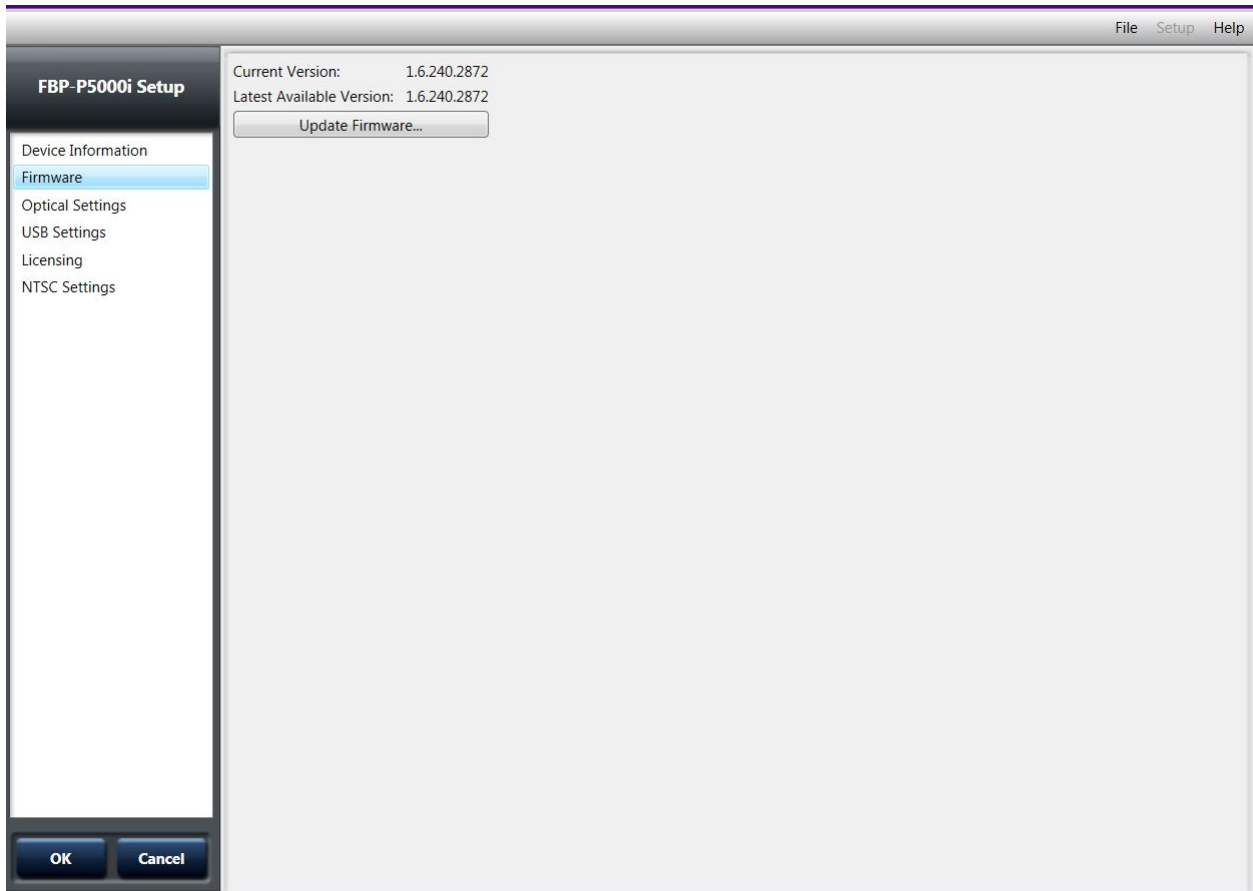
## Firmware upgrade procedure for Fiber Inspection & Test (FIT) devices.

Devices include: P5000i, MP60/80, FVAi/FVDi, Fiberchek probe, OLP-82

1. Download & install the latest version of FC Pro  
<http://fcpro.updatemyunit.net/>
2. Launch FC Pro then connect your device to the PC. FC Pro should see the device



3. Navigate to setup (upper right) and select your device (in this case a P5000i). Once in the device setup screen on the left you will see firmware.



4. If the current version is not the same as the latest available version then click on Update Firmware. This should take 10-15 seconds after which the attached device will reboot. Press OK (bottom left). If FC Pro no longer sees the unit just unplug the device from the PC, wait a few seconds and then plug back in.