

## Quick Card

# T-BERD/MTS 5800 Network Tester Smart Access Anywhere™

This quick card describes how to use **VIAVI Smart Access Anywhere (SAA)** software to remotely control the T-BERD/MTS 5800 and how to transfer configuration files, test reports and other data between the instrument and a Personal Computer (PC).

### Equipment Requirements:

- Personal Computer (PC) running Windows operating system
- T-BERD/MTS 5800 equipped with the following:
  - BERT Software Release V26.0 or greater
  - C5WIFI software for remote operation via Wi-Fi
- CAT5E or better cable, for remote operation via the RJ-45 Ethernet Management Port
- Internet connection from both PC and T-BERD/MTS or Direct Ethernet/IP connection between PC and T-BERD/MTS (via LAN or via direct CAT5E cable attachment)



### Download and Install VIAVI Smart Access Anywhere Application:

1. Open an Internet browser on the PC and navigate to VIAVI Smart Access Anywhere software portal: <http://smartaccess.updatemyunit.net/>.
2. Click on link under **Download latest update of SmartAccessAnyWhere Software for Windows** to download the latest Smart Access Anywhere release:

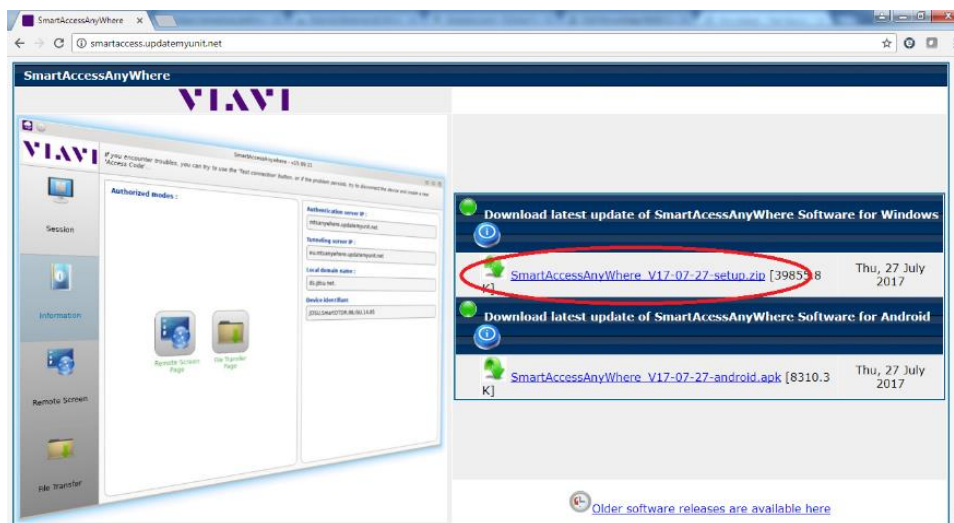
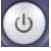



Figure 1: Updatemyunit.net software portal

3. Open the downloaded .ZIP archive and extract the executable Smart Access Anywhere installation image.
4. Double click on the installation image and follow the on-screen instructions to install the Smart Access Anywhere application.


## Configuring T-BERD/MTS Connectivity Settings:

-  Press the Power button to turn on the T-BERD/MTS 5800.
-  Tap the **System** icon in the **Status Bar** at the top of the T-BERD/MTS to display the **System menu**.

System Icon



Figure 2: System Menu

-  Tap on the **Network** icon to display Management Network settings.

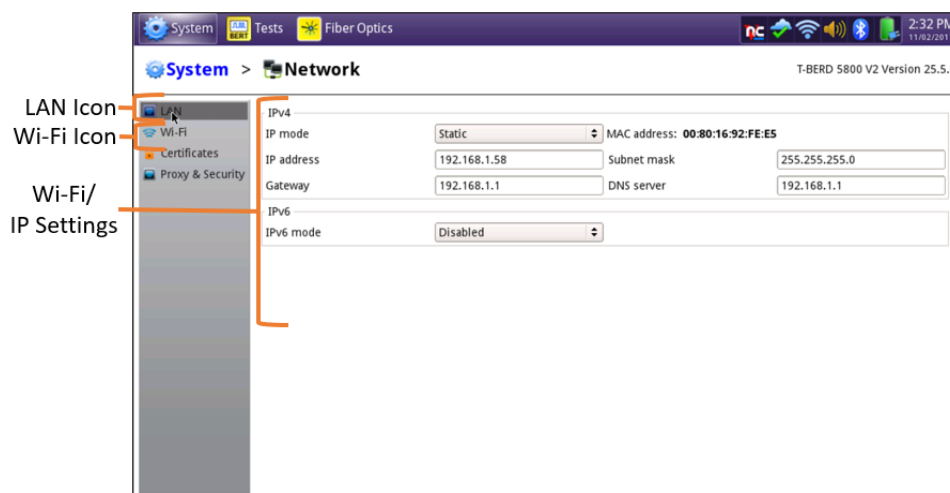





Figure 3: Network Settings

-  If using the T-BERD/MTS **Wi-Fi interface** for remote access, tap the **Wi-Fi** icon on left screen side, and tap the **Enable wireless adapter** check box. Select the desired Wi-Fi network from the list and provide login credentials to join the network and obtain an IP address.
-  If using the T-BERD/MTS **RJ-45 Ethernet Management Port** for remote access, connect CAT5E or better cable between the T-BERD/MTS RJ-45 connector and the router or PC. Tap the **LAN** icon on left screen side. If using DHCP, set **IP Mode** to **DHCP** and wait until unit obtains an IP address; otherwise set **IP Mode** to **Static** and configure a static IP address.
-  Tap the **System** icon in the **Status Bar** at the top of the T-BERD/MTS to display the **System menu**.



7. Tap the VNC Remote icon to display Remote operation settings.

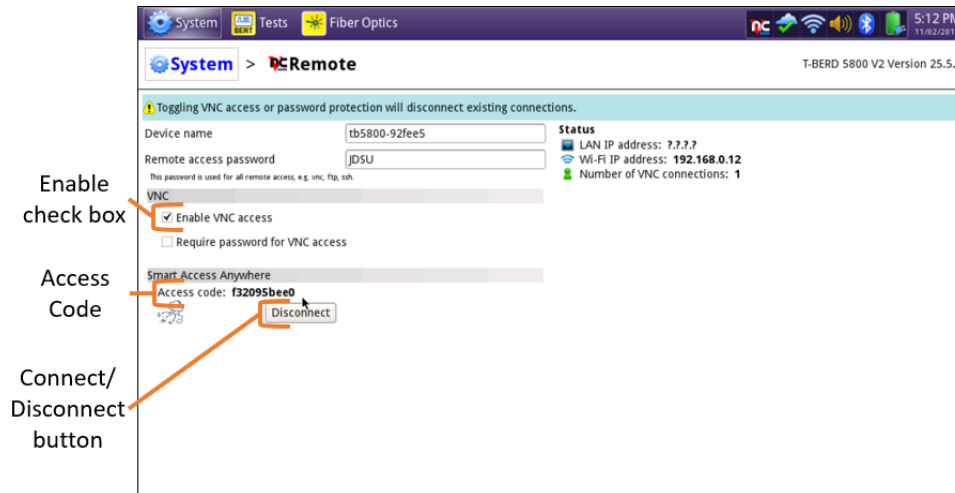


Figure 4: VNC Remote Settings

8. Tap on the **Enable VNC access** check box to enable remote access. Optionally tap on the **Require password for VNC access** check box and enter a password in the **Remote access password** text box.
9. To establish a remote connection to the T-BERD/MTS via the internet, tap on the **Connect** button under **Smart Access Anywhere** to register with the VIAVI SAA server and obtain the access code. Once the unit is connected, note the **Access code**. The access code must be used when the T-BERD/MTS is on a private network, such as a Wi-Fi Hotspot or Wireless LAN.

### Operating the T-BERD/MTS 5800 from your PC with Smart Access Anywhere:



1. Launch the VIAVI SmartAccessAnywhere application and enter the T-BERD/MTS Access Code or IP Address in the text box labeled **“Access code or local IP address”**.

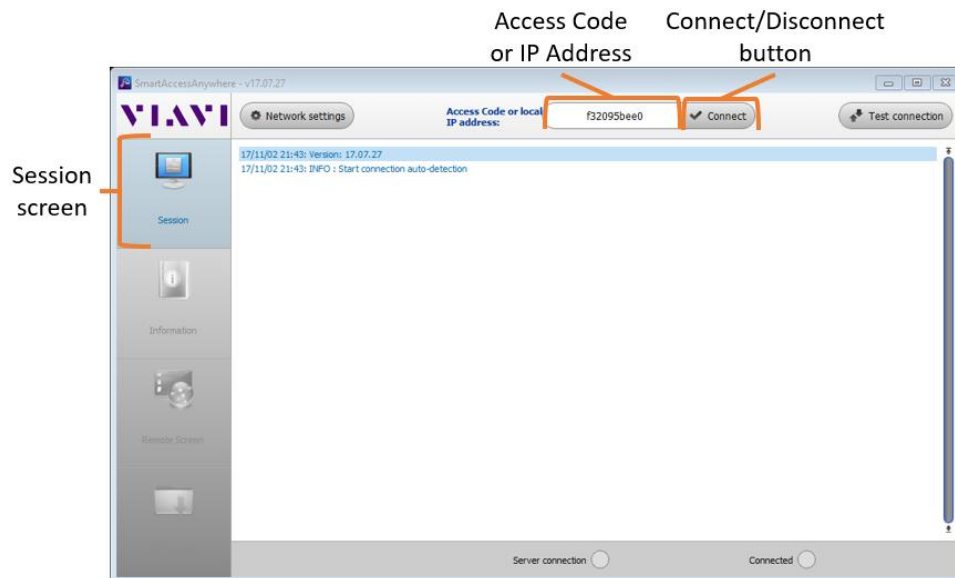


Figure 5: SmartAccessAnywhere Session Screen

2.  Click the **Connect** button and wait for connection.

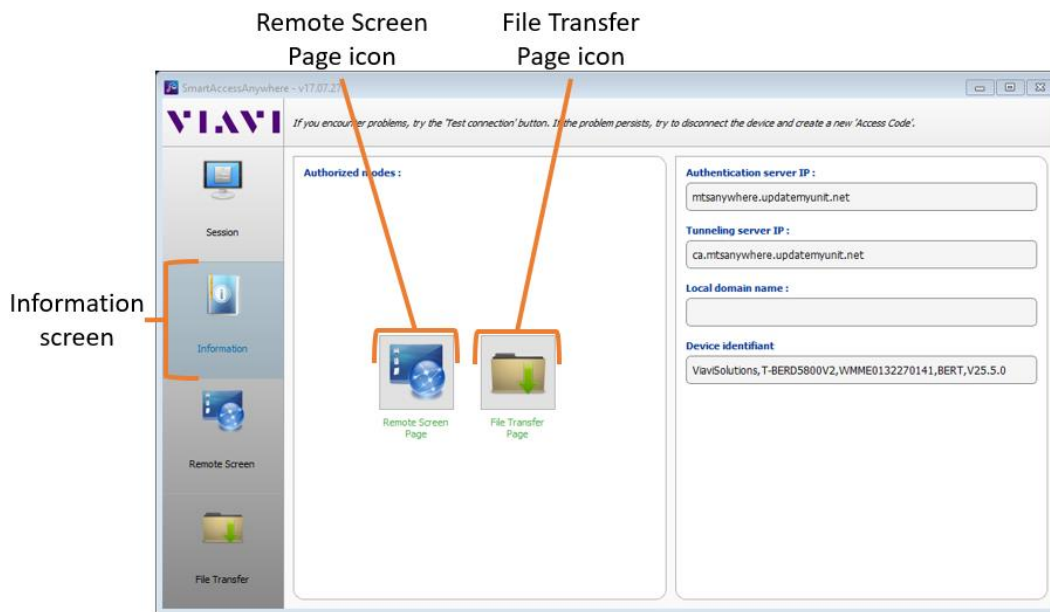






Figure 6: SmartAccessAnywhere Information Screen

3.  Click the **Remote Screen Page** icon to gain access to T-BERD/MTS user interface, where you can configure tests, run tests, or perform any other actions using your mouse instead of the touch screen.
4.  Click the **File Transfer Page** icon and select any configuration files, reports, or other files and use the  **Upload** or  **Download** buttons to copy the file(s) to/from the T-BERD/MTS.

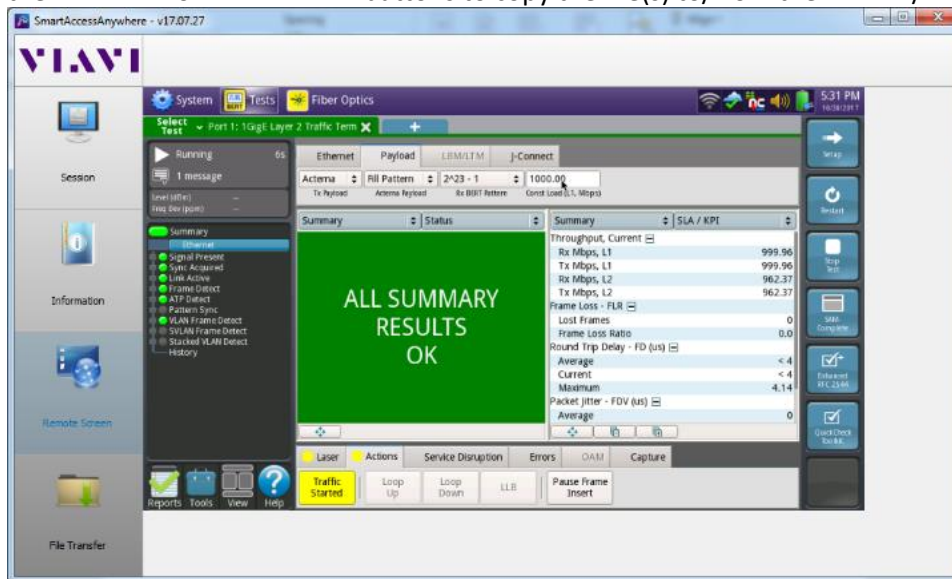


Figure 7: SmartAccessAnywhere Remote Screen Page