

VIAVI

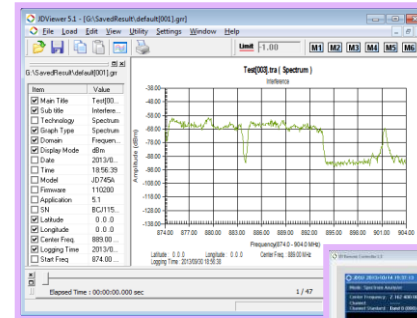
Application Software guide

Overview

Application Software for CellAdvisor

- **JDViewer**

- Managing and analyzing the result data or editing the built-in table and parameter.



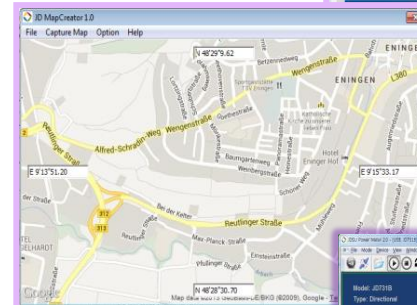
- **JDRemote**

- Remote Controller Software



- **JDMapCreator**

- Application software for mapping function of JDSU's Base Station Analyzer family



- **JDPowerMeter**

- Stand-alone Power measurement solution with JD730A and JD730B Power Sensors



How to install

Website



<http://celladvisor.updatemyunit.net/>

CD



INSTALL



JDViewer

JDViewer 5.8 - Introduction

- **JDViewer** is a dedicated application software of Viavi base station test portfolio for post-processing measurement results.
- Available Products :
 - Cable Antenna Analyzer
 - JD723A /JD725A
 - JD724B
 - JD720C Series
 - Base Station Analyzer
 - JD7105B/JD7106B
 - JD740A Series
 - JD740B/JD780A/JD780B Series



JDViewer 5.8 - Connectivity

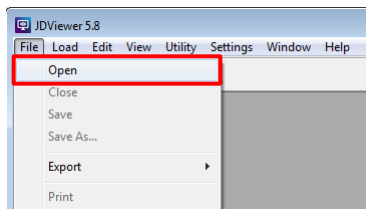
Using USB memory stick

USB memory stick



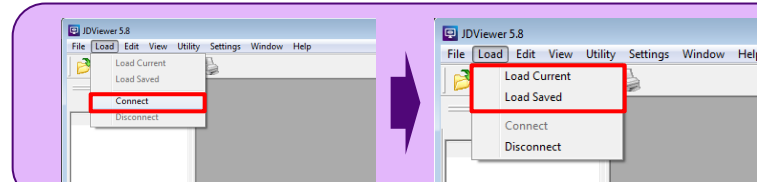
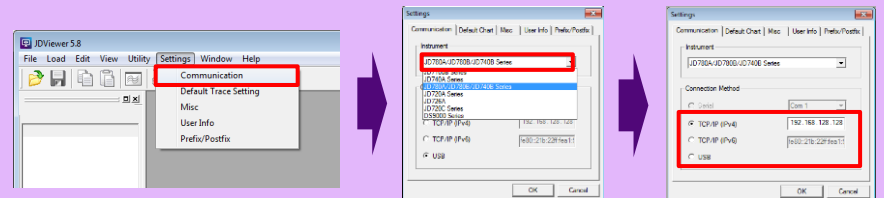
Save or Copy to USB memory stick

Connect USB memory stick to PC



Using LAN/USB cable

USB, Ethernet(Crossover)



JDViewer 5.8 - Functions

Trace Analysis

- Marker
- Single/Multi Limit Line

Chart Conversion

- VSWR-DTF-Cable Loss

Data Exporting

- Export as Data / Image
- Export as Google Map/Earth

Data Replay

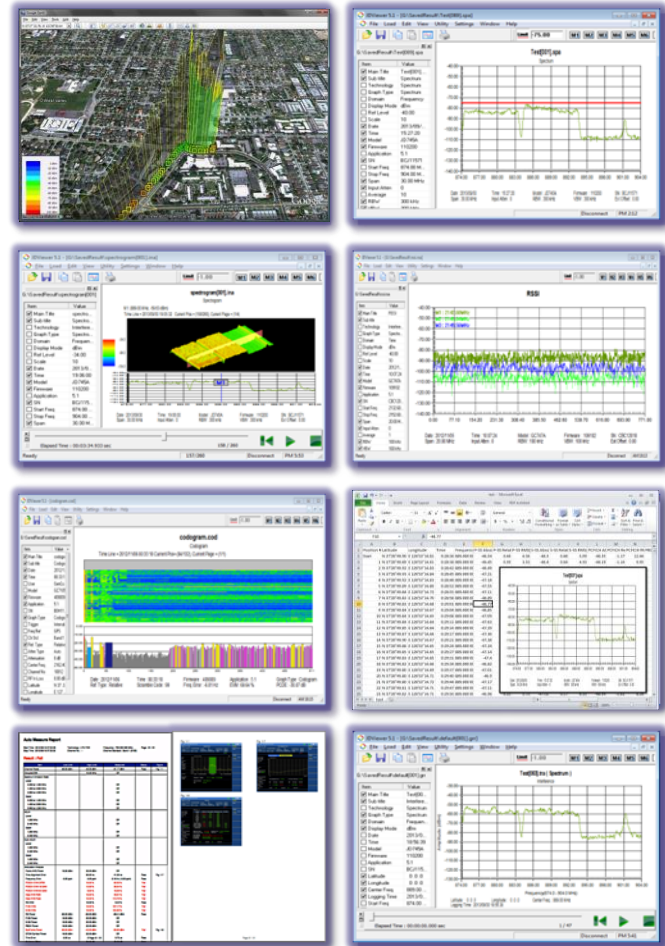
- Spectrum Logging
- Spectrogram

Result Comparing

- Compare the Auto Measure Results

Making Report

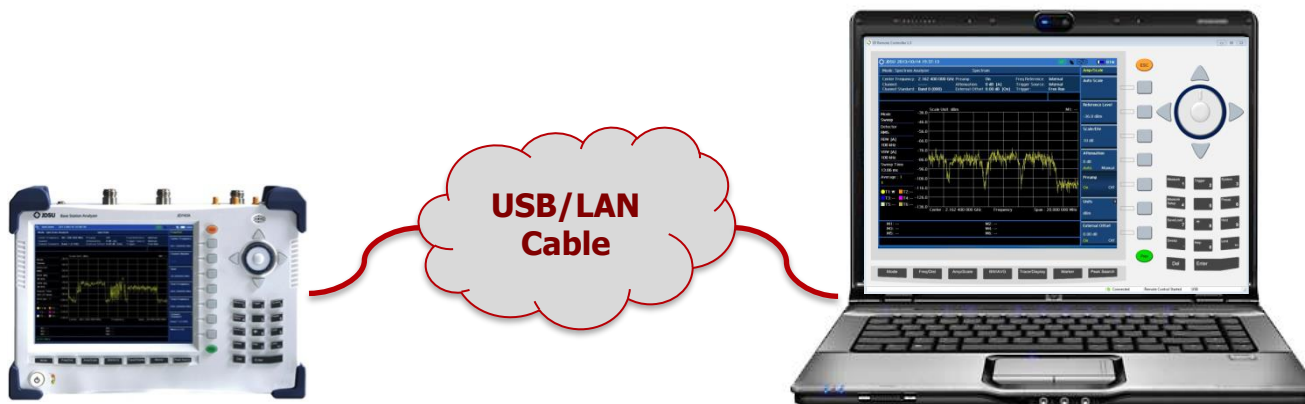
- Customize the Measurement Report



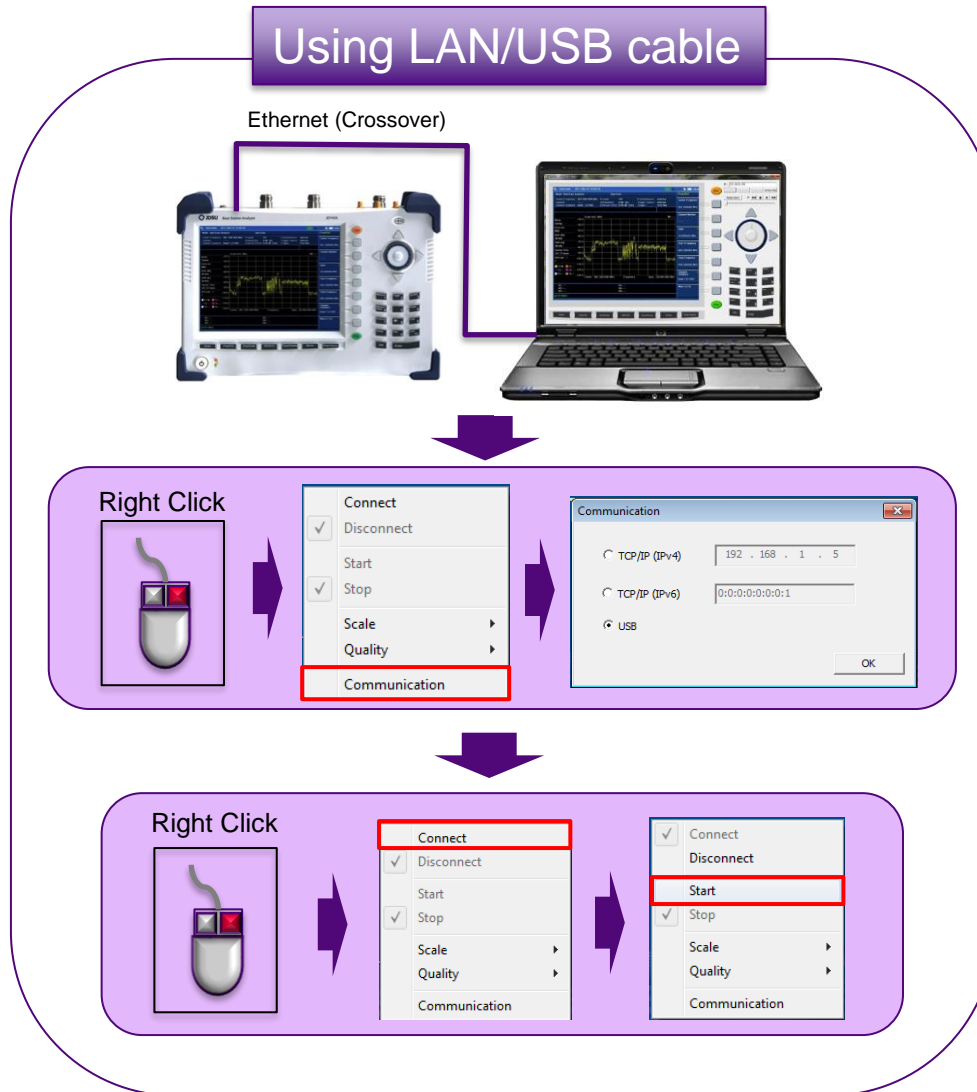
JDRemote

JDRemote 2.0 - Introduction

- **JDRemote** is a windows client to remote control the CellAdvisor.
- Available Products :
 - JD720C Series
 - JD740/780A,B Series



JDRemote 2.0 - Connectivity



JDMapCreator

JMapCreator 1.4 - Introduction

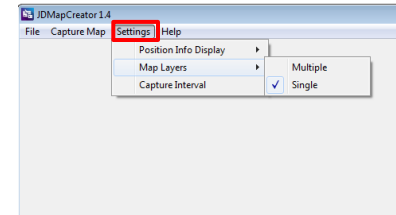
- **JMapCreator** is dedicated application software for mapping function of Viavi's Base Station Analyzer family.



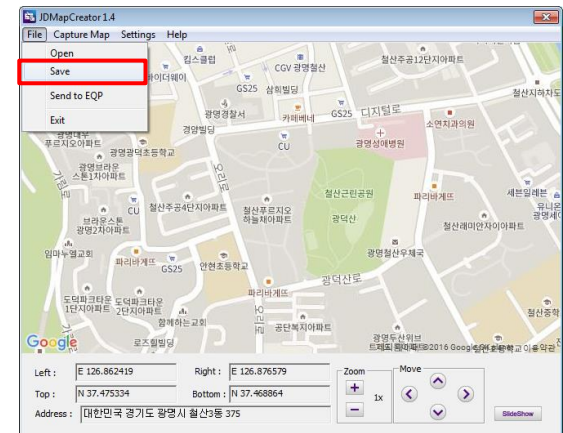
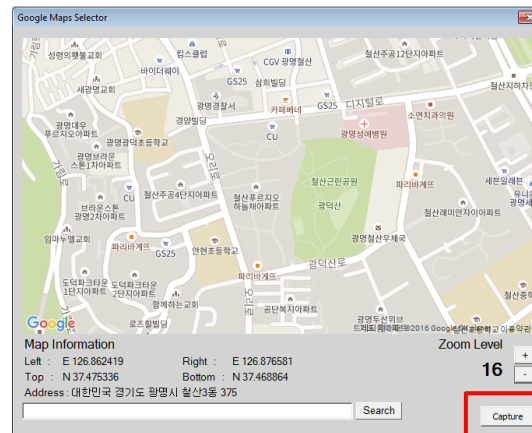
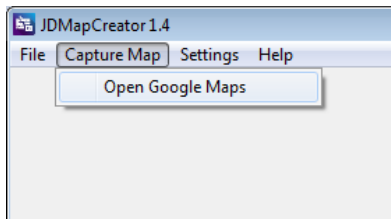
JDMapCreator 1.4 – How to create the map file

- Select Map type

- Settings – Map Layers – Multiple or Single (Default setting is 'Single' map)
 - Multiple map : Support Zoom In/Out mode



- Capture/Save Map



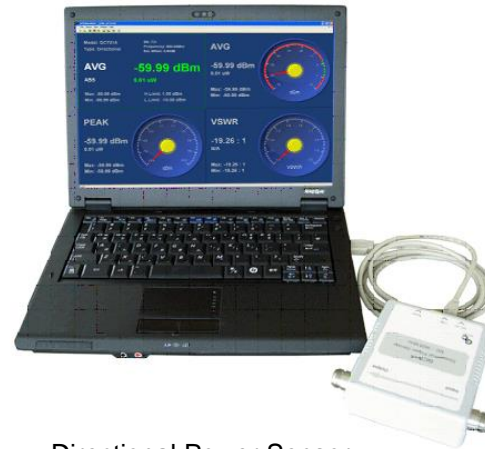
JDPowerMeter

JDPowerMeter 3.4 - Introduction

- **JDPowerMeter** is Viavi's Application Software enabling 730A and 730B series power sensors as stand-alone power measurement solutions. With JD73XX power sensors, it provides following functionality.



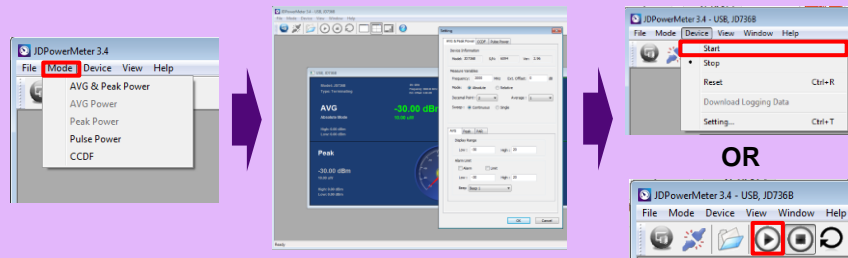
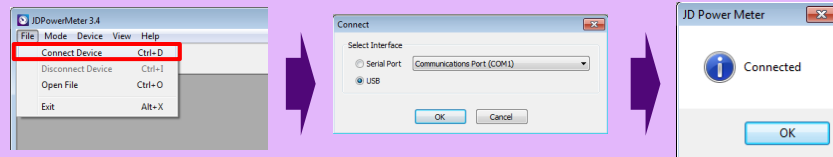
Terminating Power Sensor



Directional Power Sensor

JDPowerMeter 3.4 - Connectivity

Using LAN/USB cable



JDPowerMeter 3.4 - Functions

Stand-alone Measurement

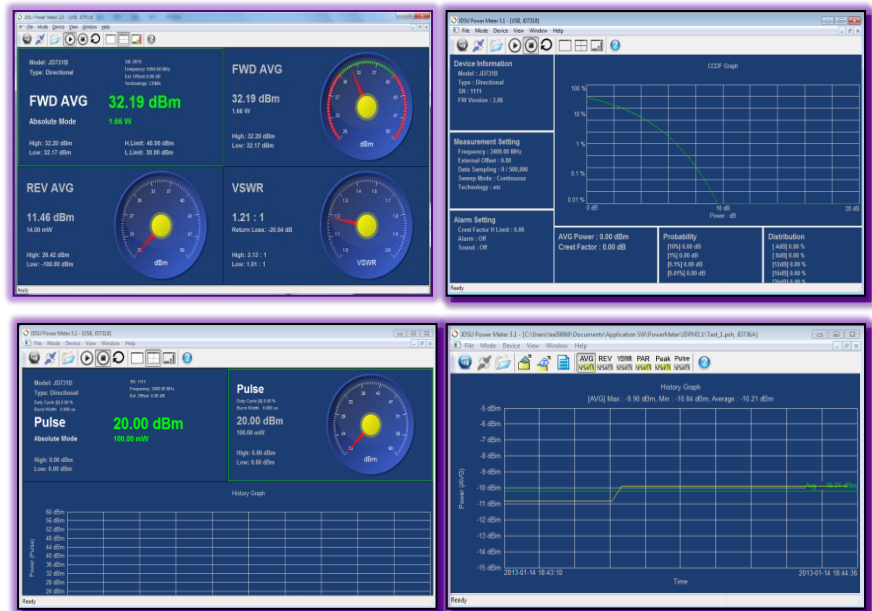
- Average & Peak Power
- CCDF
- Pulse Power
- Logging

Applicable in History Graph

- Save/Load the History Graph
- Export as Data(*.csv)/Image(*.bmp)

Making Report

- Customize the Measurement Report



VI.VI