

**ONMS & OFM
INSTALLATION**

How To change server IP

Edited by	JDSU	
Date of first issue	04/09/2013	
Date of last modification		
Reference	How_To_Do_change_server_IP_A0.doc	Version A.0

JDSU Remote Fiber Test System (RFTS)



Version	Date	Author	Index
A.0	04/09/13	B. Lions	First Release

CONTENTS

<u>1.</u>	<u>INTRODUCTION</u>	<u>3</u>
<u>2.</u>	<u>SINGLE SERVER</u>	<u>3</u>
2.1	CHANGE NETWORK CONFIGURATION	3
2.2	CONTACT THE OTU	3
<u>3.</u>	<u>STANDBY SERVER CONFIGURATION</u>	<u>5</u>
3.1	SERVERS ENVIRONMENT	5
3.2	SERVER CONFIGURATION	7

JDSU Remote Fiber Test System (RFTS)



1. Introduction

This process describes how to change a server IP, if the name remains the same. If not refer to the process `How_To_Change_Server_Name_Ax`.

We will describes two scenario, the 1st one in case of single server and the second one for a system with a standby server

2. Single server

2.1 Change network configuration

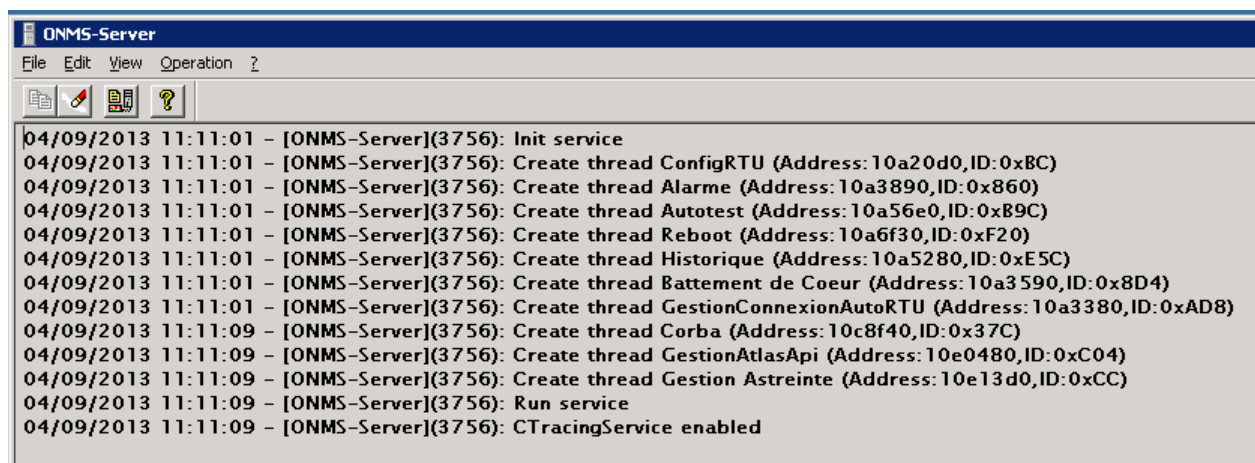
Change the IP settings according to your company requirement.

2.2 Contact the OTU

Restart the ONMS supervisor service



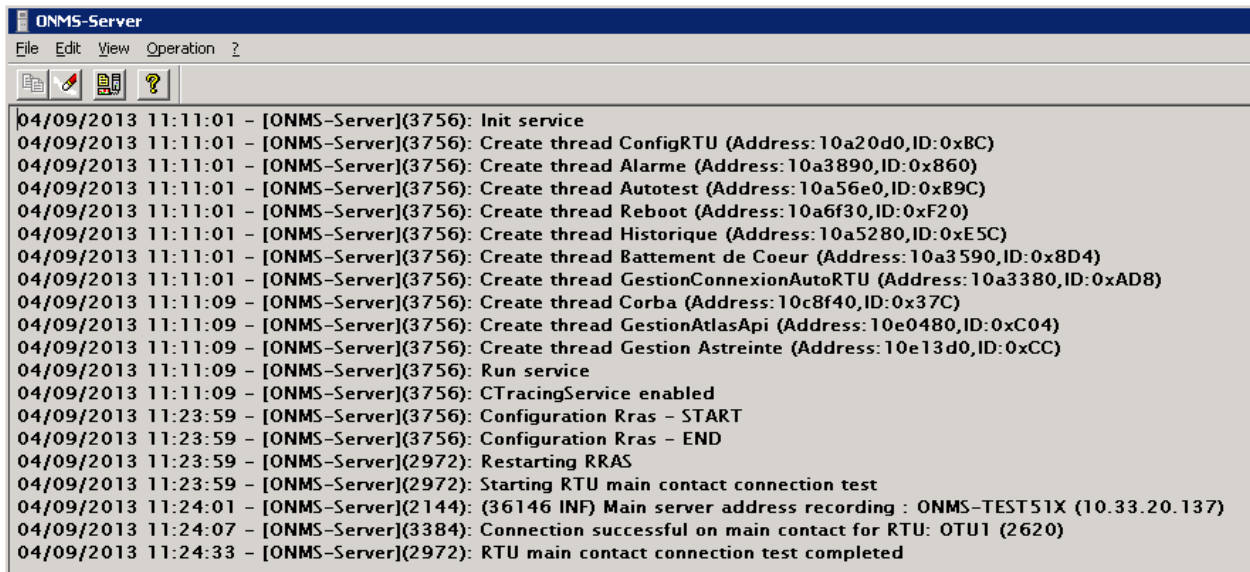
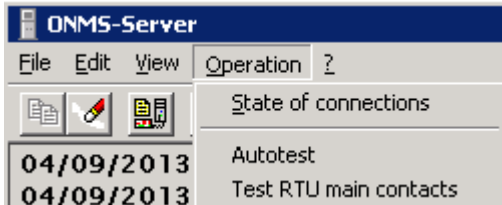
Open ONMS server application



JDSU Remote Fiber Test System (RFTS)



Click on Operation / test RTU main contacts



The new server IP is sent to the OTUs

Check the command result

3. Standby server configuration

These configurations need to be done on both servers main and standby

3.1 Servers environment

From the desktop open standby toolkit



```
STBY_ToolKit 7.0.0.0
Please choose the STANDBY action you want to launch:
-----
0 -Build a standby server from primary
1 -Compare AL sequence number
-----
2 -ACTIVATE A STANDBY SERVER
-----
3 -Configure this server
4 -Check SSH
5 -Editing Standby_env.sh
6 -Stop Hot Backup process (ONMS only)
  (archivelog for standby generation and transfer)
7 -Update OTU/RTU ONMS server address
-----
q -quit
-----
Your choice? :█
```

Select option 5 –Editing Standby_env.sh

JDSU Remote Fiber Test System (RFTS)



#Active server name

ACTIV_SERVER_NAME=rfts-demo-main

#Global primary server indications

PRIMARY_SERVER_NAME=RFTS-DEMO-MAIN

PRIMARY_SERVER_IP_ADDRESS=10.33.20.192 ← enter the new main server IP address

PRIMARY_SERVER_IP_PUBLIC=

PRIMARY_HOST_ID=F09D4C79

PRIMARY_KEY=TAUAAAd5AAAcQAAAFAAASAAA5N2M0ZDkwZobPubU=

PRIMARY_PSTN_PHONE_NUMBERS=

PRIMARY_OTU_PHONE_NUMBERS=

PRIMARY_ISDN_PHONE_NUMBERS=

PRIMARY_ONDUTY_PHONE=

#Global standby server indications

STANDBY_SERVER_NAME=RFTS-DEMO-BACKUP

STANDBY_SERVER_IP_ADDRESS=10.33.20.201 ← Enter the new standby server IP address

STANDBY_SERVER_IP_PUBLIC=

STANDBY_HOST_ID=3891A11F

STANDBY_KEY=TgUAAAYIKAAV5AAAKAADaAABGMTFBMTk4M5Xxjrc=

STANDBY_PSTN_PHONE_NUMBERS=

STANDBY_OTU_PHONE_NUMBERS=

STANDBY_ISDN_PHONE_NUMBERS=

STANDBY_ONDUTY_PHONE=

Quit and save the file

JDSU Remote Fiber Test System (RFTS)



3.2 Server configuration

```
STBY_ToolKit 7.0.0.0
Please choose the STANDBY action you want to launch:
-----
0 -Build a standby server from primary
1 -Compare AL sequence number
-----
2 -ACTIVATE A STANDBY SERVER
-----
3 -Configure this server
4 -Check SSH
5 -Editing Standby_env.sh
6 -Stop Hot Backup process (ONMS only)
  (archive log for standby generation and transfer)
7 -Update OTU/RTU ONMS server address
-----
q -quit
-----
Your choice? :
```

From the toolkit start the option **3 –Configure this server**

Ⓢ During this script the applications will be restarted

```
STBY_ToolKit.sh: Configure_Standby
Sep 04 11:38:22 AM :10.33.20.192
Sep 04 11:38:25 AM :IP OK
#####
Sep 04 11:38:27 AM Step 5:Updating hosts file
Sep 04 11:38:33 AM :/etc/hosts file:
:
: 10.33.20.192 rfts-demo-main
: 10.33.20.201 rfts-demo-backup
:
Sep 04 11:38:36 AM :Pinging other party, please wait ...
Sep 04 11:38:42 AM :rfts-demo-backup is alive
#####
Sep 04 11:38:44 AM Step 6:(Re)Installing sshd server
Sep 04 11:38:46 AM :Starting needed services
Sep 04 11:38:51 AM :Modifying "lanmanserver" service start mode to
Sep 04 11:38:51 AM :auto
Sep 04 11:38:54 AM :About to start "lanmanserver" service
Sep 04 11:38:59 AM :Modifying "lanmanWorkstation" service start
Sep 04 11:38:59 AM :mode to auto
Sep 04 11:39:02 AM :About to start "lanmanWorkstation" service
```

Follow the scripts steps

```
Sep 04 11:49:29 AM :Database configuration for standby finished
Wed Sep 4 11:49:29 RDT 2013
press Enter to exit
```

Press Enter to exit server configuration, wait for the application startup.

⚠ Donot forget to do this configuration on the standby server