
ONMSi V2.80

Release Note

Author(s) : Ph Cornu
File name : Release Note ONMSi 2.80 Rev1.doc
Creation date: 29/04/2015
Last modification : 05/05/2015

CONTENTS

1. ONMSI 2.80 REVISION 1	4
1.1 ONMSi 2.80.0.4	4
1.1.1 SW IMPROVEMENTS:	4
1.1.2 BUG FIXING	4
1.1.3 REMARKS	4
1.2 ONMSi TOOLS 1.30.0.0	4
1.2.1 SW IMPROVEMENTS	4
1.2.2 BUG FIXING	4
1.2.3 REMARKS	4
1.3 OFM 3.60.0.2	5
1.3.1 SW IMPROVEMENTS	5
1.3.2 BUG FIXING	5
1.3.3 REMARKS	5
1.4 OTU8000E 5.02	5
1.4.1 SW IMPROVEMENTS:	5
1.4.2 BUG FIXING	5
1.4.3 REMARKS	5
2. SOFTWARE COMPATIBILITY	6
2.1 REVISION 1	6
3. SOFTWARE UPGRADE	7
3.1 ONMSi ON ACTIVE SERVER	7
3.1.1 CLEAN OLD BUDGETS	7
3.1.2 UNINSTALL ONMSi	9
3.1.3 UNINSTALL JERICHO	10
3.1.4 ONMSi INSTALLATION	11
3.2 ONMSi TOOLS ON ACTIVE SERVER	15
3.2.1 INSTALLATION	15
3.2.2 BACKUP	16
3.3 ONMSi TOOLS ON PASSIVE SERVER	17
3.3.1 INSTALLATION	17
3.3.2 REBUILD STANDBY	18
3.4 ONMSi ON PASSIVE SERVER	18
3.5 JERICHO	19
3.6 OTU	19

ONMSi 2.80 – Release Note



3.7 DATABASE INTEGRITY CHECK

19

Version	Date	Author	Index	Main Improvement
2.80	29/04/15	Ph Cornu	Revision 1	ONMSi v2.80.0.4 ONMSi Tools v1.30.0.0 OFM v3.60.0.2 OTU8000e v5.02

1. ONMSi 2.80 Revision 1

1.1 ONMSi 2.80.0.4

1.1.1 SW Improvements:

- Accessibility according to WCAG
- Monitoring and localization after first splitter
- Windows server 2012 compatibility
- Alarm duration report
- Switch configuration in OTU configuration and network inventory
- EPT#5361 SNMP configuration issue reports alarm

1.1.2 BUG Fixing

- EPT#5469 "Association Enabled" is mandatory with OFM
- EPT#5509 improve display in Traceviewer with multitrace
- EPT# 4581 Update active server when system connect to OTU

1.1.3 Remarks

Localization after first splitter requires OTU8000e >= 5.02

Jericho required only for E9iSMSModem option

1.2 ONMSi Tools 1.30.0.0

1.2.1 SW Improvements

- More user friendly interface
- Capability to select main network for HAS transfer
- Backup of log files for HAS & ONMSi

1.2.2 BUG Fixing

- EPT5372 OTU without rescue upgrade without error

1.2.3 Remarks

Mandatory with ONMSi >= 2.80

1.3 OFM 3.60.0.2

1.3.1 SW Improvements

- Capability to provide maps

1.3.2 BUG Fixing

1.3.3 Remarks

Automatically included with ONMSi 2.80

1.4 OTU8000e 5.02

1.4.1 SW Improvements:

- Monitoring and localization after first splitter
- Faster scanning
- EPT# 4581 Update active server when system connect to OTU
- EPT# 5241 Display OTAU SN in OTU dashboard
- EPT# 5459 [SMART OTU] change SMTP port number
- EPT# 5500 [SmartOTU]: heartbeat, keep alive traps to SNMP Mgr
- EPT# 5534 [SmartOTU] GUI in Chinese

1.4.2 BUG Fixing

- EPT# 5286 Rebuilt time out for large port configuration
- EPT# 5460 [SmartOTU] Ethernet config not available in DHCP without LAN access
- EPT# 5543 Crazy traces with 3us, 140km (FPGA)
- EPT# 5573 OTU not sending Heartbeat to ONMSi at first installation

1.4.3 Remarks

2. Software compatibility

This compatibility table must be strictly respected.

2.1 Revision 1

Date	May 2015
Revision	1
OS for server	64-bits Windows Server 2008 R2 Standard SP1 or Enterprise SP1 64-bits Windows Server 2012 R2 Standard or Enterprise
Oracle	11G
ONMSi	2.80.0.4
Browser	Internet Explorer 8 Minimum, 9 or above Recommended Firefox 10 or above Google Chrome 16 or above
ONMSi Tools	1.30.0.0
OFM	3.60.0.2
Jericho	4 build 41 only needed with E9iSMSModem
OTU8000	>= 2.54 / 3.24 (login install replaced by installeth)
OTU8000 boot	4.00
OTU8000 rescue	3.24
OTU8000e	>= 3.0 / 5.02
OTU8000e rescue	5.02

Legend

New release displayed in **bold**

Dependency software displayed with same colour (except black)

Software version description

Most of our applications releases contain 4 digits.

- First digit = Major design change
- Second digit = New features , improvements
- Third digit = Maintenance patch
- Fourth digit = Reserved JDSU (build)

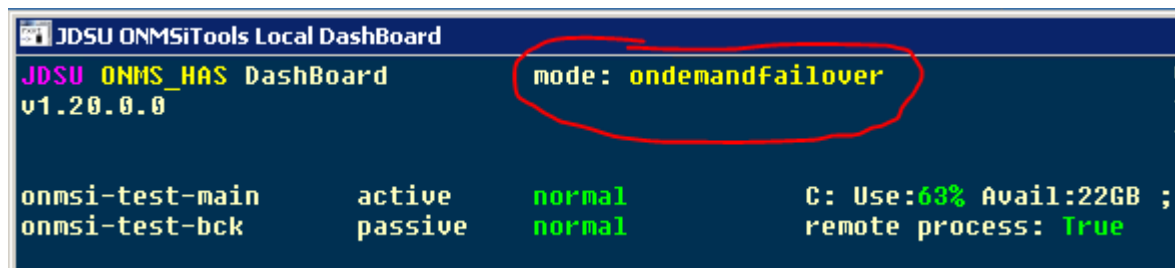
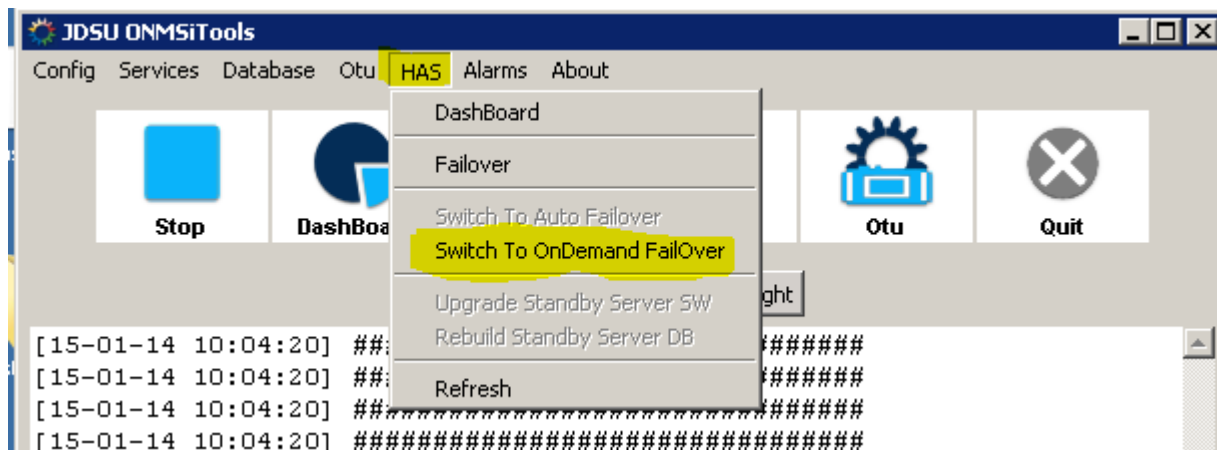
3. Software upgrade

Don't forget to request you new licenses to division before starting any upgrade.

For system with backup server, active server must be upgraded first.

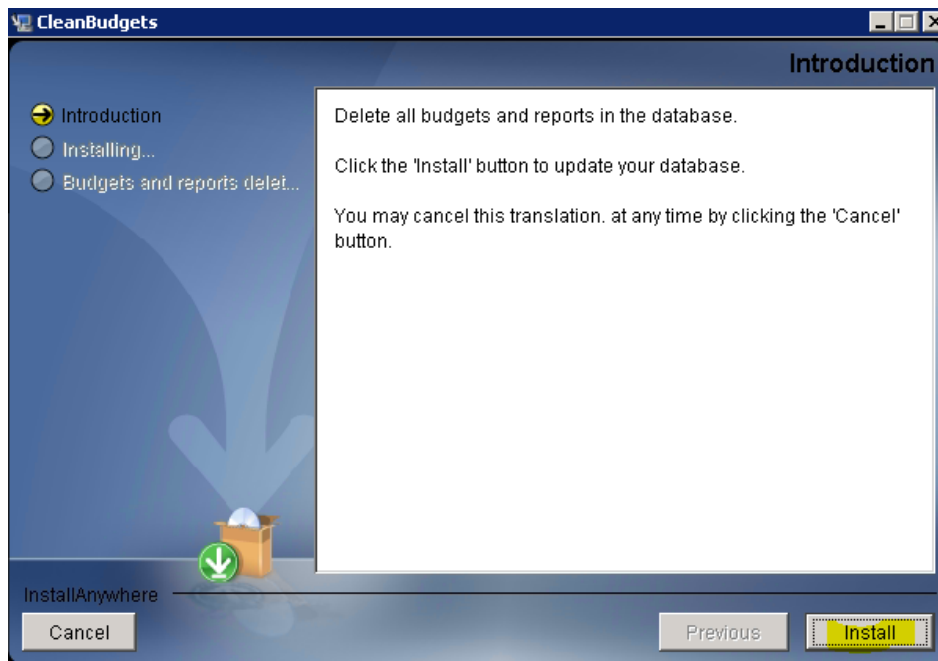
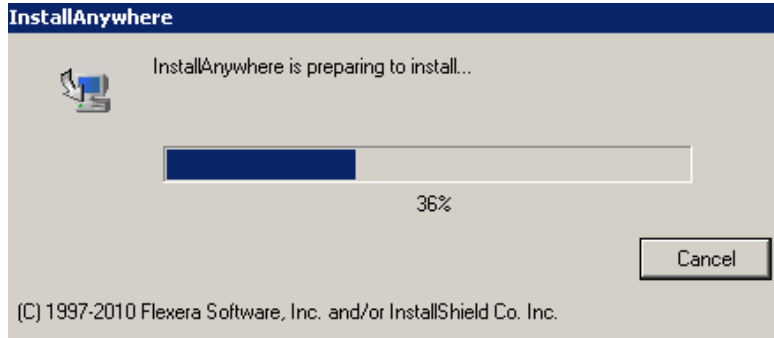
3.1 ONMSi on active server

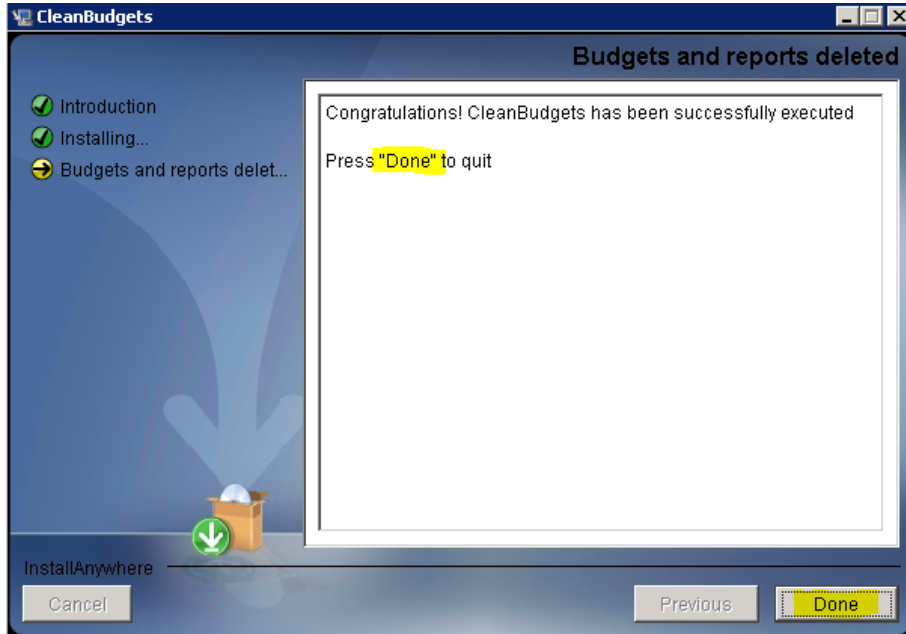
For system with backup, ensure system is configured on "ondemandfailover". If not switch system to this mode.



3.1.1 Clean Old budgets

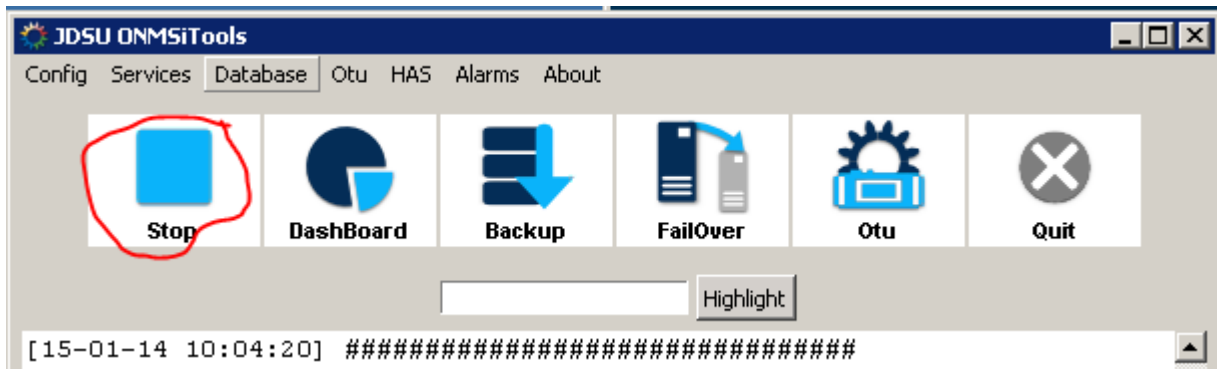
For upgrade from version 2.5x or lower, execute the program c:\workshop\CleanBudgets.exe to delete old corrupted budgets.



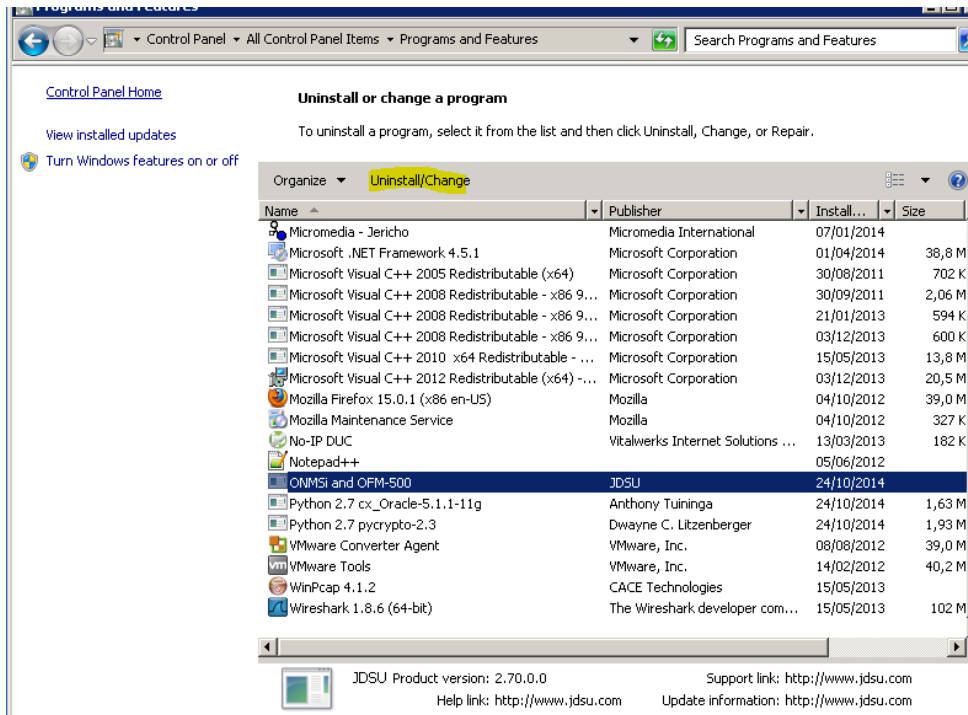


3.1.2 Uninstall ONMSi

Stop services.

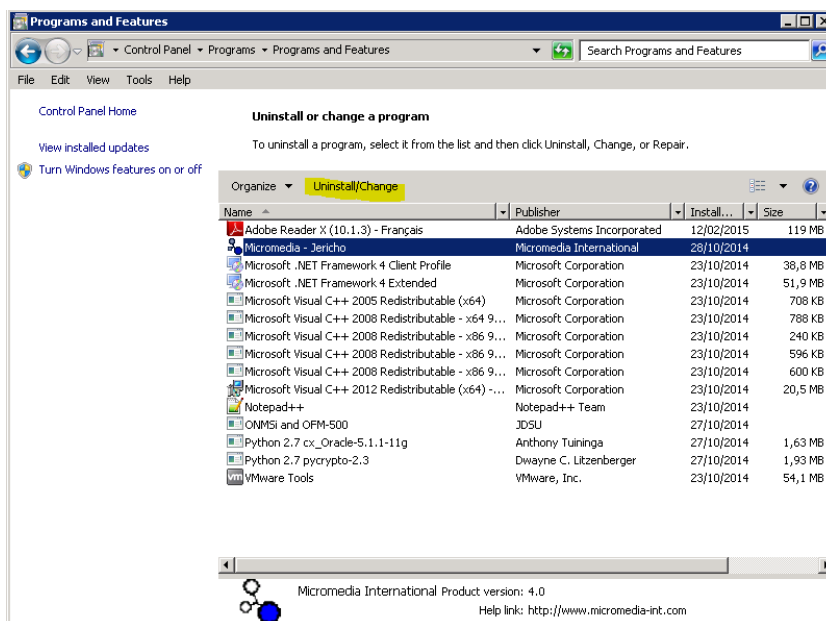


From Control panel menu, uninstall the ONMSi application



3.1.3 Uninstall Jericho

If you do not use GSM modem for SMS it is recommended to uninstall Jericho



ONMSi 2.80 – Release Note








By the end of uninstallation **Reboot server**

3.1.4 ONMSi installation

ONMSi and OFM-500 are both installed with only one setup. OFM is installed only if OFM option is activated in the licence key.

From the DVD: \RFTS_RevX\OFM_V3.x_and_ONMSi_V2.xx\ONMSi-OFM-500\

Launch the installed **ONMSi-OFM-500-setup.exe**

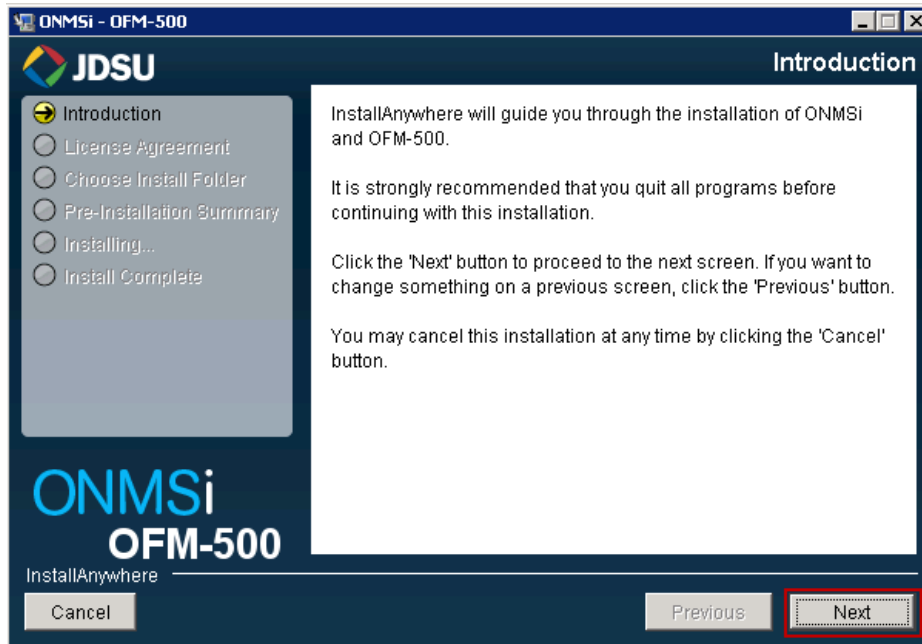
 InstData	10/12/2011 3:08 PM	Dos:
 checkIntegrity.cmd	8/4/2011 1:30 PM	Scrip
 hashdeep.exe	5/24/2011 1:32 PM	Appl
 onmsi_ofm500.md5	10/4/2011 9:40 AM	Fichi
 ONMSi-OFM-500-setup.exe	10/3/2011 3:10 PM	Appl

On the security message click on **Yes** to start the installation process.

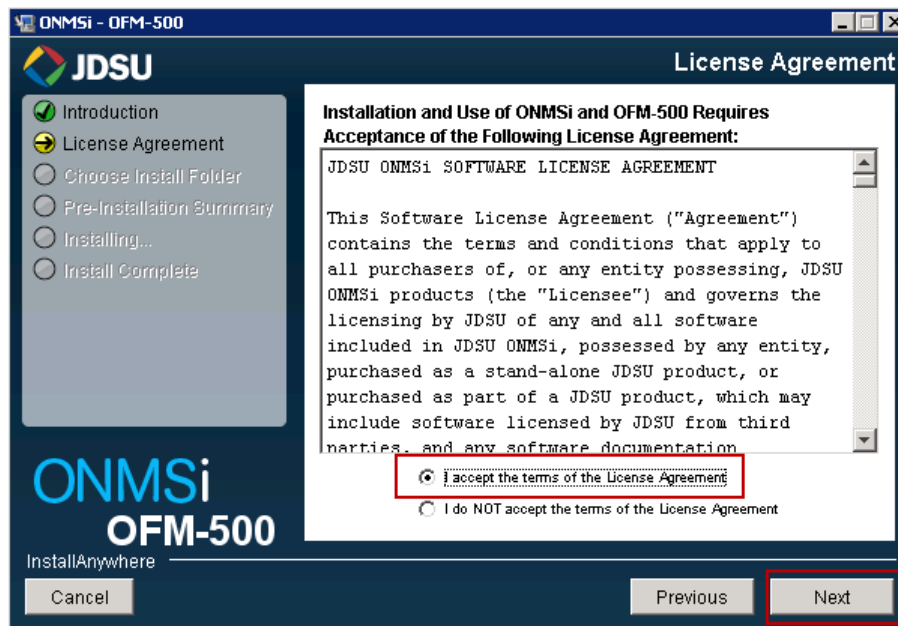
ONMSi 2.80 – Release Note



Click on **Next**



Click on **I accept** and click on **Next**

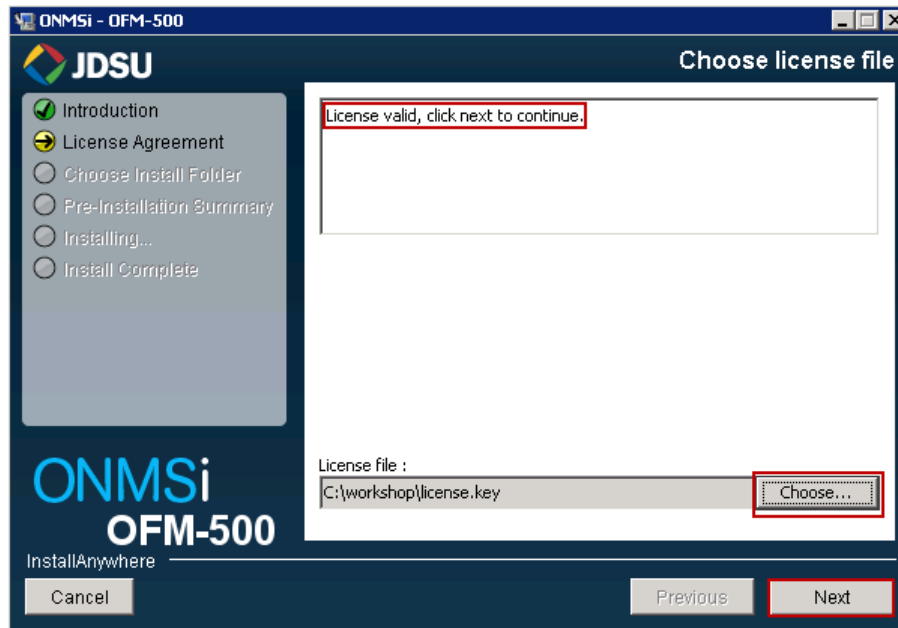


ONMSi 2.80 – Release Note

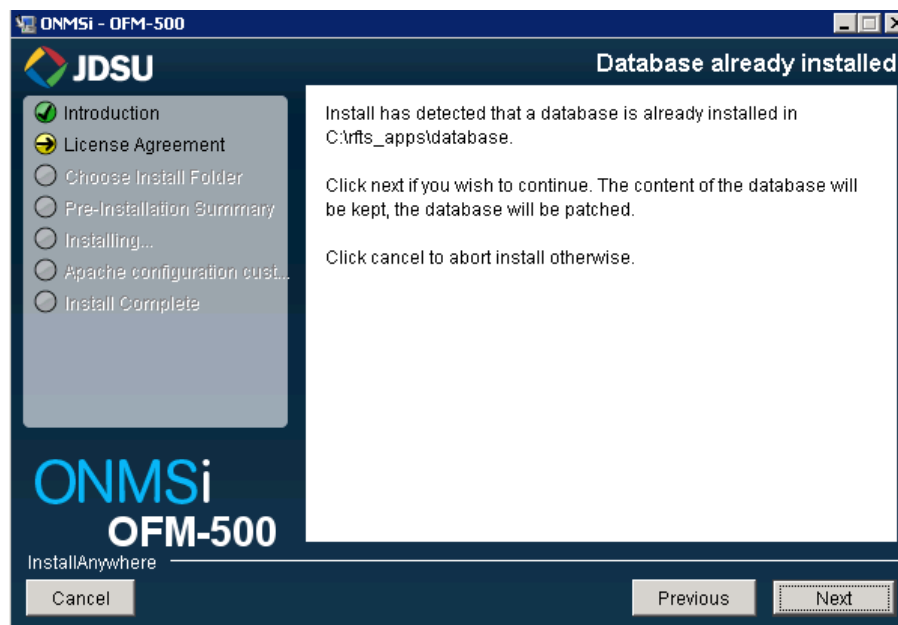


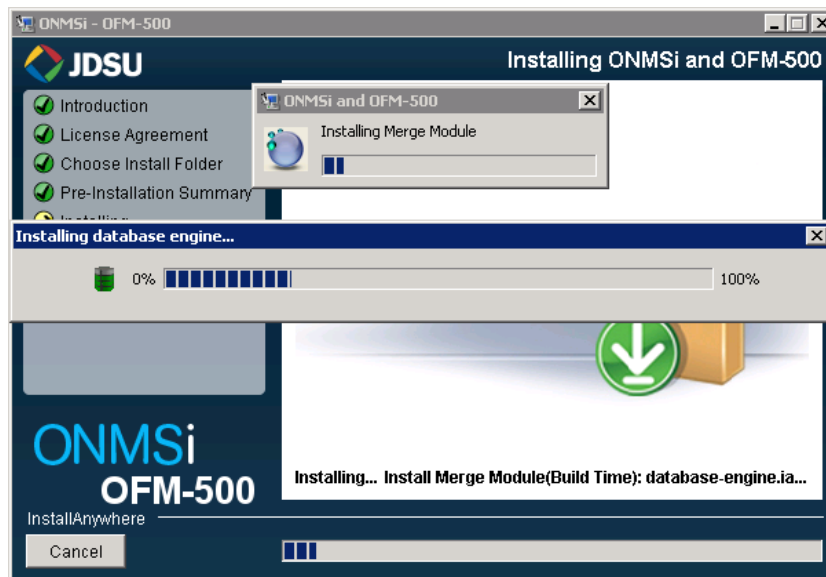
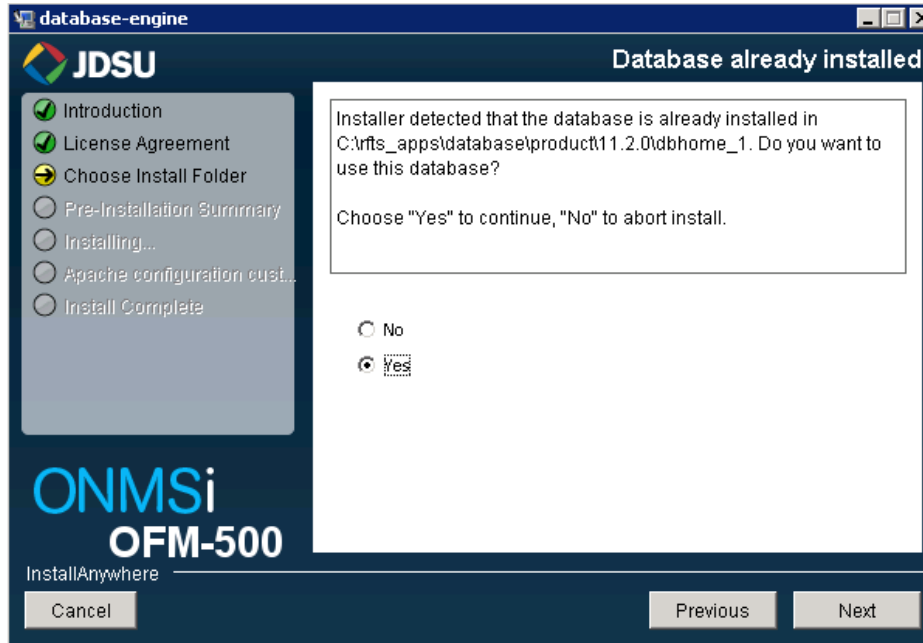
Click on **Choose** to select your licence file

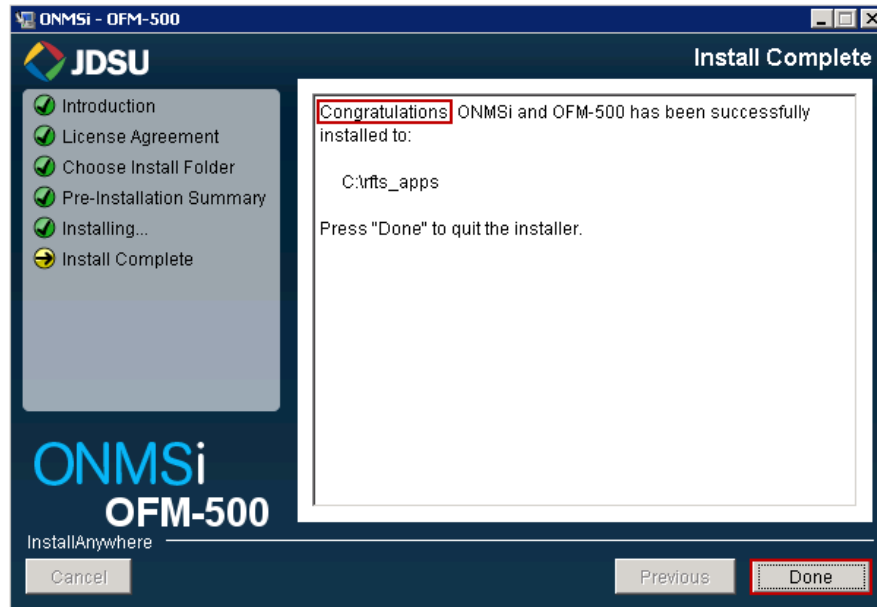
You must see Licence valid to be able to click on **Next**



Select the directory where you want to store your application files (default is \rfts_apps) then click on **Next**







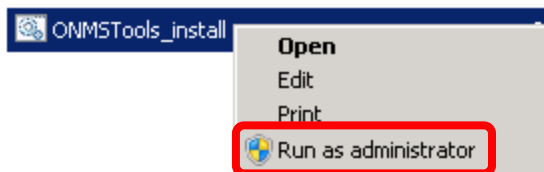
The **OFM software** has been installed during the ONMSi installation according to the licence generate by the Division

3.2 ONMSi Tools on active server

3.2.1 Installation

Install over the existing one on active server.

From the ONMSi DVD run InstallONMSTools.cmd



Start the installation as administrator

```
C:\Windows\System32\cmd.exe

Working_dir: C:\Workshop\InstallONMSTools\
Microsoft Windows [Version 6.1.7600]
About to install ONMSTools version 1.10.0

Step 0 OS_CHECK
Microsoft Windows [Version 6.1.7600]

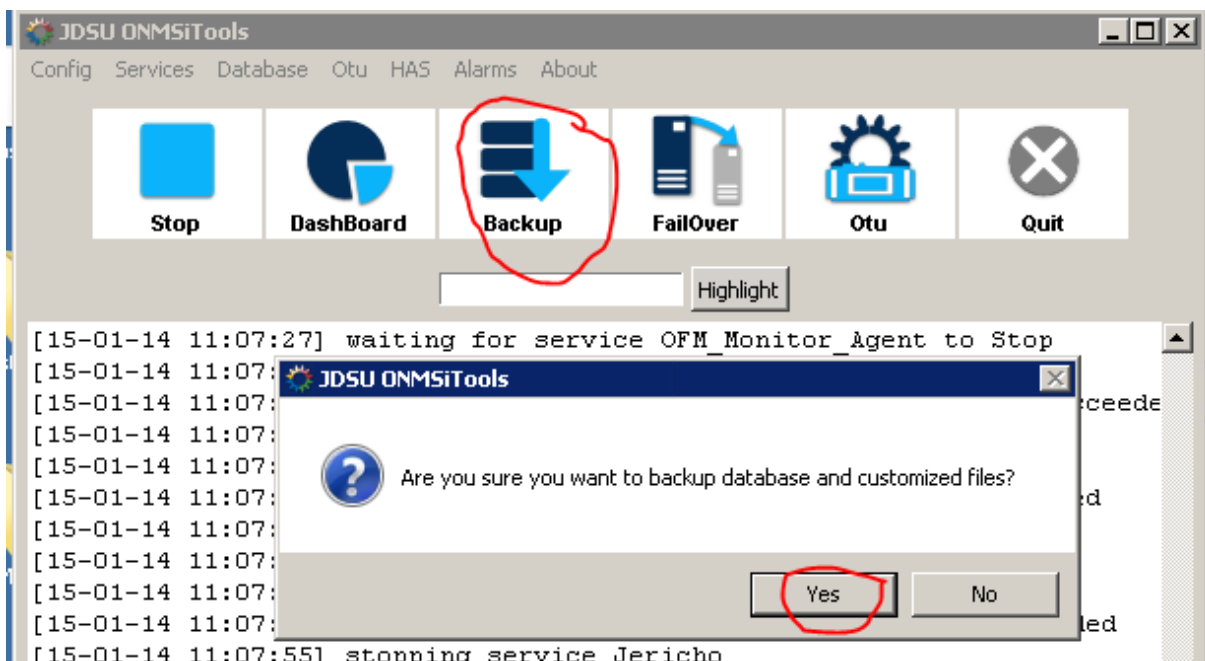
Step 1 ASK_WHAT2INSTALL

Please choose what to install:
OTU scripts only           : 1
OTU + ONMSTools           : 2
OTU + ONMSTools HA        : 3
Nothing (exit)            : 0

Please enter your choice : 2_
```

3.2.2 Backup

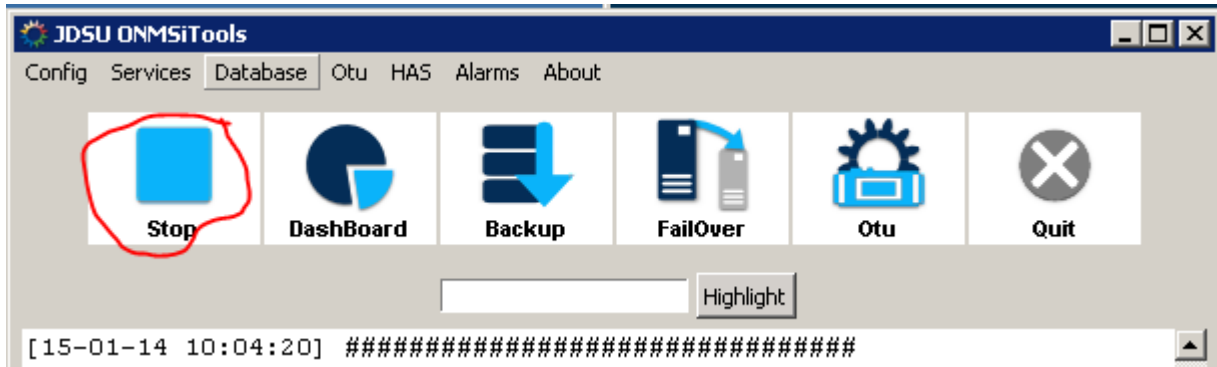
Force "Backup" after ONMSi tools installed.



3.3 ONMSi Tools on passive server

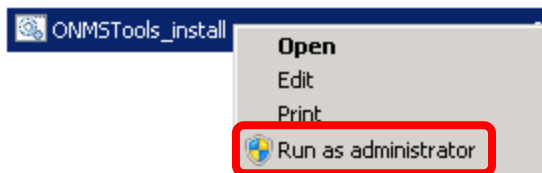
3.3.1 Installation

Stop services.



Install over the existing one on active server.

From the ONMSi DVD run InstallONMSTools.cmd



Start the installation as administrator

```

C:\Windows\System32\cmd.exe

Working_dir: C:\Workshop\InstallONMSTools\
Microsoft Windows [Version 6.1.7600]
About to install ONMSTools version 1.10.0

Step 0 OS_CHECK
Microsoft Windows [Version 6.1.7600]

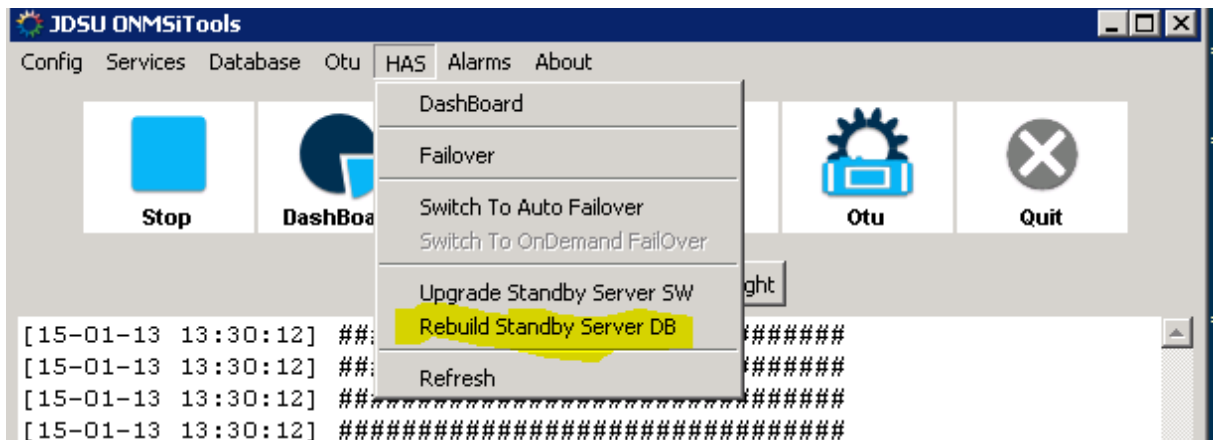
Step 1 ASK_WHAT2INSTALL

Please choose what to install:
OTU scripts only           : 1
OTU + ONMSTools           : 2
OTU + ONMSTools HA        : 3
Nothing (exit)            : 0

Please enter your choice : 2_
    
```

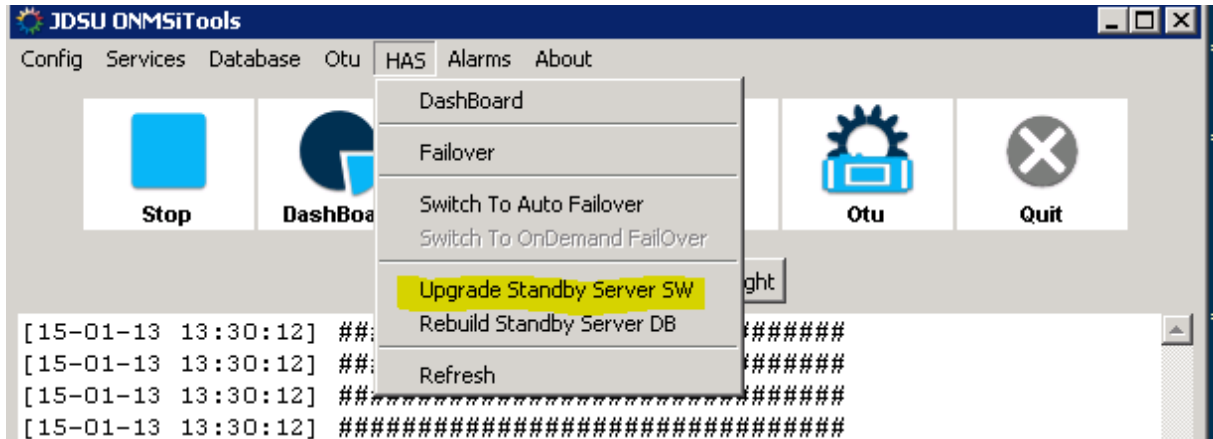
3.3.2 Rebuild standby

For system with HAS option force "Rebuild Standby server"



3.4 ONMSi on passive server

Use the toolkit / HAS / Upgrade Standby Server option to upgrade all application. No need to upgrade Mapserver config, database ...



3.5 Jericho

From Control panel menu, uninstall the Jericho application

Then install the new one.

3.6 OTU

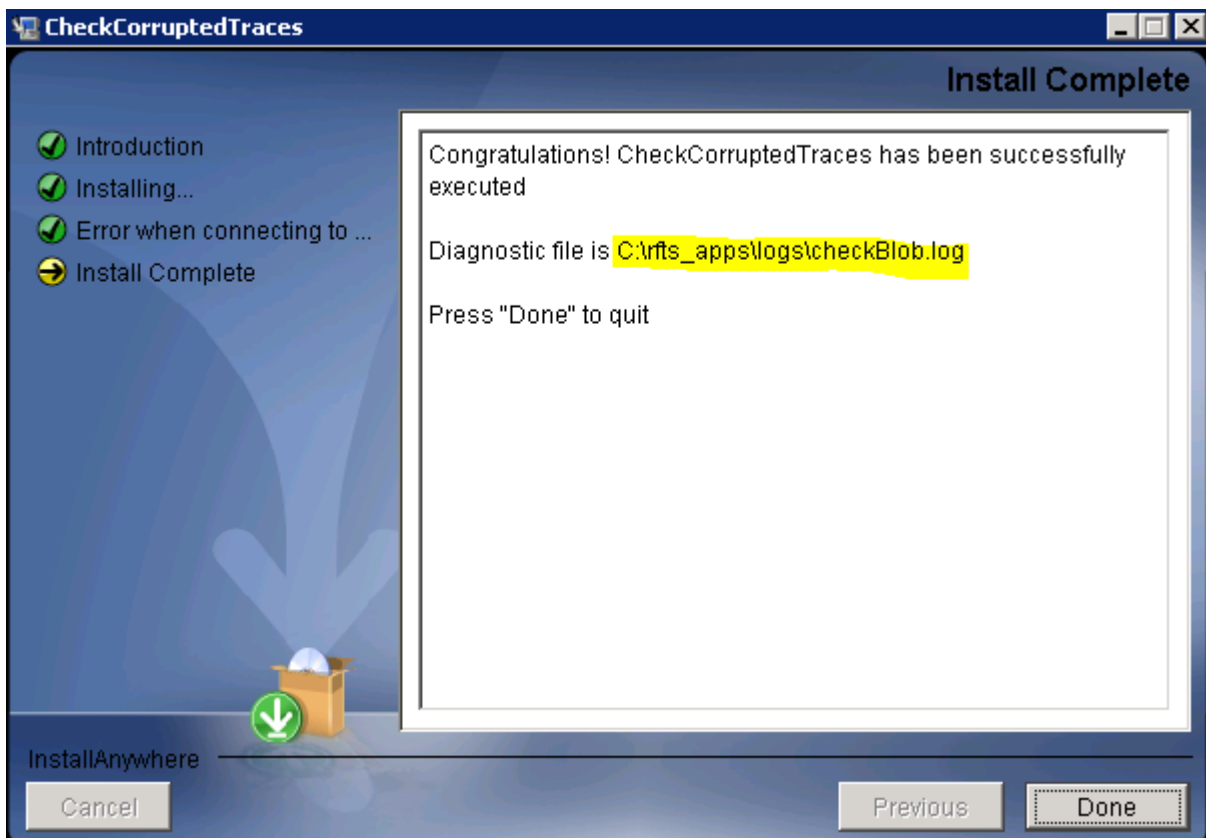
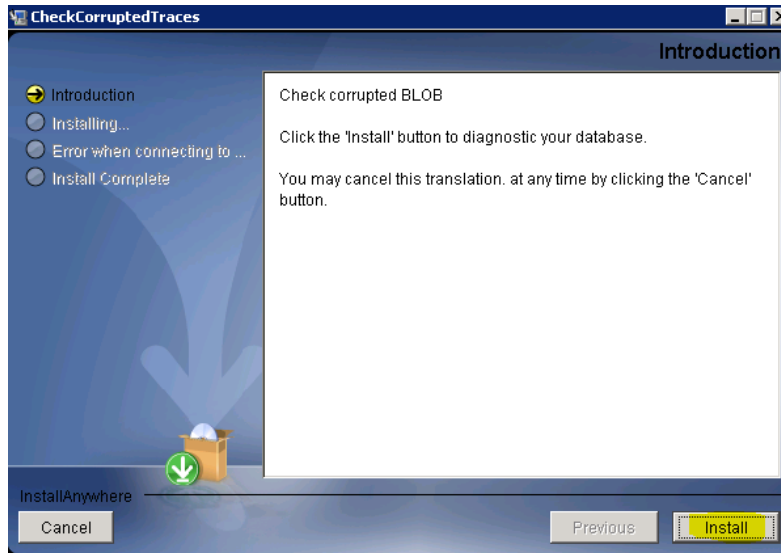
Install over the existing one using OTU tool kit.

3.7 Database integrity check

- Execute the CheckCorruptedTraces.exe program on active server to identify the corrupted OTDR traces.

Execute the program CheckCorruptedTraces





- Repair the identified corrupted OTDR traces.

ONMSi 2.80 – Release Note



Open the file C:\RFTS_APPS\LOGS\CheckBlob.txt

For the links with repair instruction, copy, paste the url, then redo the reference according to the detail provided below.

```
## Corrupted OTDR Acquisition ID = 522396
## Acquired on: 07-DEC-12 03.57.25.000000 AM
##
Used in monitoring test ID = 522354
Monitoring test name = test1
Link ID = 521227
Link name = BD CT JT01-01-023
ONMSi URL = "http://localhost/app.jsp#LINK_DASHBOARD!id'521227'new'false"
OTDR trace used as REFERENCE of DETECTION of this test
-- REPAIR instructions --
-- Redo the DETECTION acquisition for this test
-- with acquisition parameters:
--   Duration (s): 5
--   Pulse (ns): 1000
--   Resolution (cm): 1000
--   Wavelength (nm): 1650
--   Range (km): 20.463
```