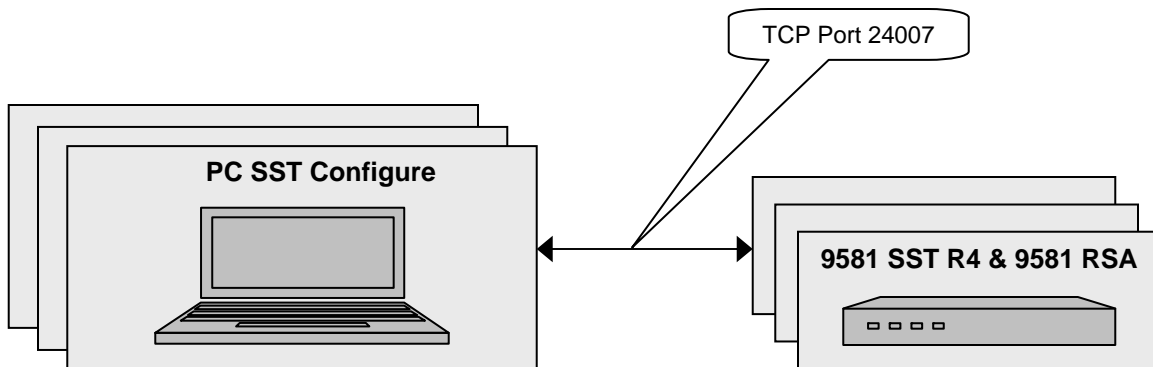
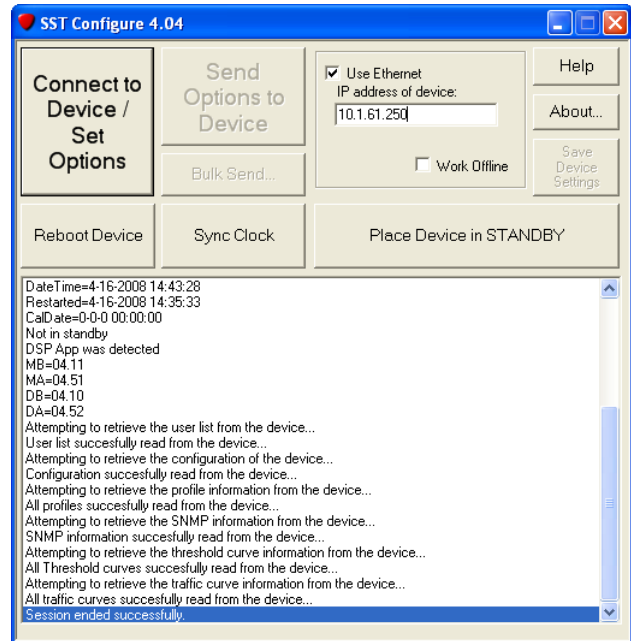


SST Configure Ports and Protocols

The SST Configure client software uses port 24007 to connect to and configure the 9581 SST R4 and 9581 RSA.



For Additional Help Contact
Trilithic Applications Engineering
1-800-344-2412 or 317-895-3600
support@trilithic.com or
www.trilithic.com

SST Configure Ports and Protocols
P/N 0010275042 – Rev 7/08
1 of 1