

## Initial Inspection

Upon receiving the DTS-330, inspect the container for damage. If the shipping container or packing material has been damaged, retain both the container and packing materials until proper DTS-330 operation has been verified.

If the contents of the shipment are incomplete, if there is physical damage to or a defect in the DTS-330, or if the DTS-330 does not function properly, notify your local sales representative immediately. If the shipping container is damaged, notify the carrier as well and retain the shipping materials for the carrier's inspection.

## Preparing the DTS-330 For Use

The DTS-330 consists of the main computer unit, keyboard, monitor, pointing device, pre-installed software and a PC card with external interfaces.

- 1 Unlatch the **keyboard** from its carrying position by pushing in the **release latches** (Figure 1) on both sides of the keyboard.



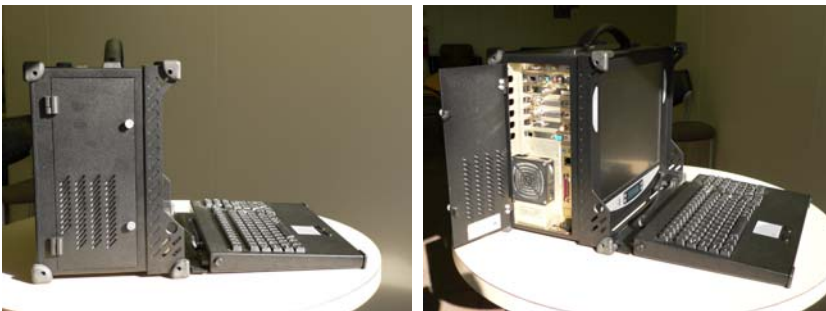
**Figure 1** Keyboard Release Latches

- 2 While pushing in the **two release latches**, pull down on the **keyboard** to unlatch and place in its **operating position**.

**NOTE**

Make sure the AC power to your computer is "OFF" before connecting or disconnecting any peripheral (monitor, keyboard or mouse.) Failure to do so may cause serious personal injury as well as permanent damage to your computer.

- 3 While facing the **DTS-330**, open the **DTS Interface Panel** located on the left side of unit. Refer to Figure 2.



**Figure 2** DTS Card Interface Panel

- 4 Connect all **digital video sources** (QAM, 8VSB, GBIC, TSI, PSK, and COFDM) to the DTS Interface Panel.
- 5 Located on the back of the DTS-330 unit (Figure 3), insert **power cord**.



**Figure 3** DTS-330 Rear Panel

**IMPORTANT**

Please check to make sure the computer power supply is set appropriately for power in your region of the world, if necessary (110V/220V). Failure to set the power supply appropriately will damage the power supply.

- 6 Once all cables are installed, turn the DTS-330 unit on by pressing the **Power On/Off button**.

**NOTE**

The Power On/Off button is located on the lower right side of the front panel ([Figure 4](#)).



**Figure 4** Power On/Off Button

- 7 Allow the DTS-330 to go through the boot process.








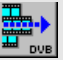

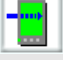





**NOTE**

- The DTS-330 should boot to the desktop view.
- The DTS-330 is typically shipped with auto logon activated.

## How to use the DTS-330 Analyzer

The DTS-330 typically ships with the application launch bar docked across the top of the desktop. A description of each icon can be viewed in [Table 1](#).

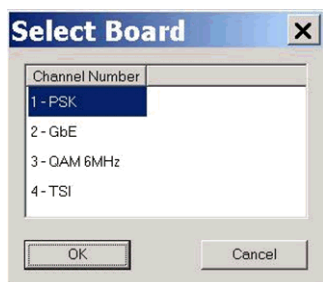
**Table 1** Analyzer Launch Bar and Icons

Icon	Description
	
	<b>Transport Stream Player</b> - transmit pre-generated or captured MPEG-2 transport streams across either a SMPTE-310M, a DVB Asynchronous Serial Interface (ASI), or a DVB Synchronous Parallel Interface (SPI).
	<b>Transport Stream Recorder</b> - record MPEG-2 transport streams from an External Device across ASI (Serial BNC), SPI (Parallel BD25), SMPTE-310M, QPSK, QAM, Gigabit Ethernet, or Terrestrial interfaces.
	<b>Transport Stream Converter</b> - play files from or to another manufacturer's product. It supports two types of file formats, DTS and Raw.
	<b>Packet Editor</b> - view and modify the contents of a transport stream on a packet-by-packet basis.
	<b>Event Log Viewer</b> - view events as they are recorded by an event logger in the Transport Stream Analyzer.
	<b>ATSC Transport Stream Multiplexer</b> - create an ATSC compliant MPEG TS Multiplex from MPEG Program Stream files including PSI/PSIP tables and error generation.
	<b>DVB Transport Stream Multiplexer</b> - create a DVB compliant MPEG TS Multiplex from MPEG Program Stream files including PSI/SI tables and error generation.
	<b>Elementary Stream Translator</b> - convert elementary and data stream files into a format that can be used as input to JDSU's Transport Stream Multiplexer (TSM).
	<b>Private Table Builder</b> - build private definition files containing user-defined tables and descriptors.
	<b>ATSC Transport Stream Analyzer</b> - performs comprehensive, real-time analysis of ATSC and MPEG-2 transport streams
	<b>DVB Transport Stream Analyzer</b> - performs comprehensive, real-time analysis of DVB and MPEG-2 transport streams
	<b>Extended Service Information (XSI) Transport Stream Analyzer</b> - performs comprehensive, real-time analysis of digital transport streams within the proprietary British Sky Broadcasting (BSkyB) MPEG-2 scheme of delivery.
	<b>VISUALmpeg PES/ES/QA Off-line Analyzer</b> - visually analyze different type of MPEG Videostreams off-line including MPEG-1, MPEG-2, MPEG-4 AVC / H.264 formats.
	<b>Interra H264 Analyzer</b> - analyze and probe multiple types of stream and file formats off-line against defined standards (H.264, MPEG-2, etc.)

1 Click on the **appropriate icon** that represents the function you would like to perform.

## DTS-330 Quick Start Guide

If you have purchased more than one type of interface card, a **Select Board dialog box** is displayed as shown in [Figure 5](#).



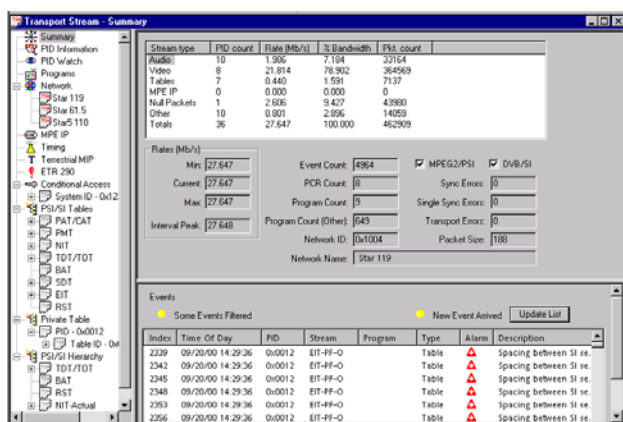
**Figure 5** Select Board Dialog Box

### NOTE

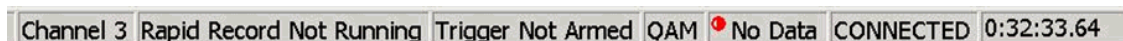
The ASI, SPI, and SMPTE interfaces are represented by the “**TSI**” option in the Select Board dialog box.

2. Select the **appropriate board** for the type of test that you are preparing to do, then press **OK**.

The Analyzer will load and open ([Figure 6](#)).



**Figure 6** Transport Stream - Summary Window



**Figure 7** Status Bar

Notice that there is a red “No Data” indicator ([Figure 7](#)) in the bottom right of the analyzer status bar. The only exception to this condition may be with the TSI card.

There are six card interface types. They are PSK, GBIC, QAM, 8VSB, COFDM and TSI. Except for TSI, you will use the same procedure to start the data analysis on each card type.

JDSU DTS-330 interface cards are supplied with their own Quick Reference Card. Please refer to your particular type of interface quick start card for more details on how to start analysis.

### JDSU Corporate Headquarters - USA

430 N. McCarthy Blvd.

Milpitas, CA 95035 USA

Toll Free 1-800-638-2049 • Tel +1-240-404-2999 • Fax +1-240-404-2195

[www.jdsu.com](http://www.jdsu.com)