

High Port Asymmetric - HPA Optical Switch Tray OST

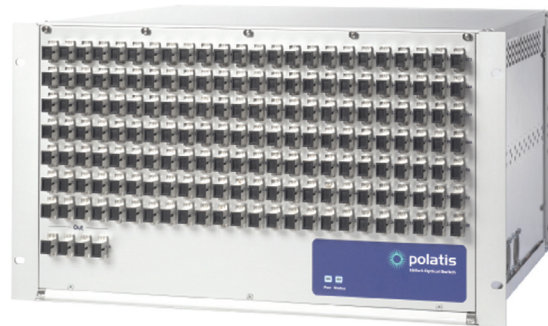
HPA Optical Switch Tray

Polatis introduces the high port asymmetric optical switch – a new series of rack-mounted switch systems, capable of instrument-quality optical switching and the ability to fast-switch dark fiber in high port count applications. Built upon DirectLight technology, path connections are maintained with the highest level of signal integrity and transparency.

Ideal for test and network monitoring applications, the product has been designed for use in core, access, and PON networks.

The system works as either an in-line or test access device, with the ability to handle bi-directional traffic signals of any format. The ability to switch without light means the switch can connect paths in continuous traffic, burst-mode data transfer, or dark fiber situations.

This flexible series of products has configurations ranging from 48 to 432 ports, and the ability to add optical attenuation and monitoring capabilities.



DirectLight® Platform

Polatis photonic switches are based on the patented DirectLight beam-steering technology, setting the standard for high performance.

The direct beam-steering architecture ensures highly reliable switching throughout the lifetime of the product, even in demanding applications.

KEY FEATURES

- Low insertion loss
- Fully non-blocking
- Reliable beam-steering technology
- Instrumentation quality performance
- Handles bi-directional traffic
- Switches dark fiber
- Handles high optical power
- Many flexible MxN configurations
- Optional optical power monitoring
- Optional variable optical attenuation

APPLICATIONS

- Core & access network monitoring
- PON/FTTx network monitoring
- Automated component test
- Shared equipment test facility
- RF over fiber switching
- Optical sensor systems
- Video feed distribution facility
- Signal aggregator for intelligent traffic systems
- High power laser source switching

High performance optical switch solutions

PERFORMANCE SPECIFICATIONS

Insertion Loss @ 1550nm ¹	<2.0dB
Repeatability ²	<±0.15dB
Polarization Dependent Loss	<0.2dB
Crosstalk	<-60dB
Return Loss	>50dB
Switching Time	<20ms
Maximum Optical Power	+27dBm
Switch Lifetime	10 ⁸ cycles
Operating Temp (Normal)	+10° to +40°C, <85% RH non-condensing
Operating Temp (Extended)	- 5° to +55°C, <90% RH non-condensing
Storage Temp (Normal)	-40° to +70°C, <40% RH non-condensing
Storage Temp (Extended)	-40° to +70°C, <95% RH non-condensing

All parameters are measured excluding connectors at 1550nm and 20°C with an unpolarized source after thermal equalization unless stated.

1. Measured using 3 patch-cord method as defined in TIA/EIA-56-14A.
2. Measured as per Telcordia GR-1073 CORE section 4.2.11.

Switch Configurations

The product is available in a number of convenient standard configurations (N refers to number of ports in column below each configuration).

Contact Polatis if your configuration is not shown below. All configurations are strictly non-blocking.

2xN Nx2	4xN Nx4	6xN Nx6	8xN Nx8	10xN Nx10	16xN Nx16
48	48	48	48	48	48
96	96	96	96	96	96
144	144	144	144	144	144
192	192	192	192	192	
240	240	240	240	240	
288	288	288	288		
336	336	336			
384	384				
432					

Configurations shown for:

Single (6U) systems
Double (12U) systems

Larger switch configurations available.
Please contact your Polatis representative.

Packaging Information

Sample Packaging Configuration	Options	Tray Dimensions	Power Dissipation
4x168	LC, FC, SC or ST Connectors GPIB, Ethernet & RS232 Connectors & Comms Interface Locations Front or Rear Panel	19" rack mount 6 rack units high	110W

Ordering Information

The part numbering scheme for Polatis products is as follows:

OST - x - 1 -

Fibers	
nnn Inputs	
Fibers	
mmm Output	
Connector	
L = LC	
F = FC	
C = SC	
U = MU	
Polish	
A = APC	
U = UPC	
Fiber	
1 = Single mode 9/125µm	
Interface	
E = Ethernet & RS232	
M = Ethernet (Multisession) & RS232	
G = GPIB, Ethernet & RS232	
Protocol	
S = SCPI	
T = TL1	
N = SNMP	
Power	
B = Battery (48V)	
Mains connector type	
A = North America/Japan	
E = Continental Europe	
U = UK	
C = China/Australia	
Environmental	
E = Extended	
N = Normal	
Customization	
S = Standard	
R = Rear panel connectors	
V = Non-standard variant	

FOR MORE INFORMATION

Visit our website: www.jdsu.com

E-mail us: sales@jdsu.com

Phone us:

North American Sales: 1 866 228 3762

Latin American Sales: +55 11 5503 3800

Asia Pacific Sales: +852 2892 0990

EMEA Sales: +49 7121 86 2222

